

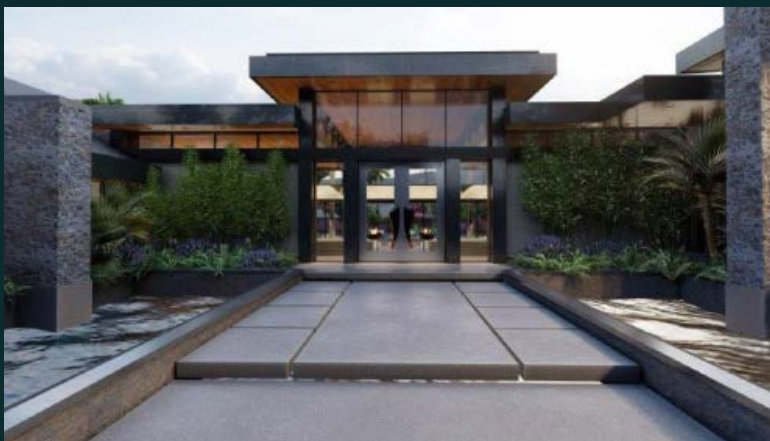
- 📍 RARE NEAR-FINISHED CUL-DE-SAC ESTATE LOTS IN AFFLUENT RANCHO MIRAGE FOR LUXURY HOMES
- ✅ HOME ARCHITECTURE APPROVED ON BOTH LOTS | AVAILABLE TOGETHER OR SEPARATE | NO HOA
- 💰 ACROSS FROM "COTINO" DISNEY DEVELOPMENT & CRYSTAL LAGOON (UNDER CONSTRUCTION)

**CONTACT
BROKER
FOR PRICE**



VISTA COURT AT RANCHO MIRAGE

2 NEAR-FINISHED CUL-DE-SAC ESTATES LOTS FOR LUXURY HOMES | AVAILABLE TOGETHER OR SEPARATE
PARCEL 1: 72680 VISTA COURT (WESTERN LOT) .92 ACRE | APPROVED FOR 7,364 SQ. FT. HOME
PARCEL 2: 72690 VISTA COURT (EASTERN LOT) 1-ACRE | APPROVED FOR 7,092 SQ. FT. HOME
CITY OF RANCHO MIRAGE | COACHELLA VALLEY, CA



📍 RANCHO MIRAGE QUICK FACTS

Sources: US Census Bureau, NAR, Dataquick

5.3% ↑

HOME PRICE LAST 12 MONTHS (RE-SALE + NEW)

\$156,721

AVERAGE HOUSEHOLD INCOME

\$2M-\$7.63M

RECENT HOME SALE PRICES IN AREA

CITY OF RANCHO MIRAGE OVERVIEW

Rancho Mirage is known as one of the most affluent cities in Riverside County with an average household income of \$156,721. Some of America's finest golf courses, most exclusive residential communities, and international events such as the annual Kraft Nabisco Championship are found here. Many famous people have made Rancho Mirage their home including President Ford upon his retirement from the U.S. Presidency. Home to the Valley's premium resorts, Rancho Mirage lodging properties recently collectively invested over \$900 million in renovations and reconstructions. The Agua Caliente Casino Resort Spa is the Valley's only regional skyscraper property with 24-hour gaming. The Ritz-Carlton Rancho Mirage opened early 2014 after undergoing a major \$60 million renovation and is the only Five-Star lodging property in the region. The subject property is located across the street from the Westin Mission Hills Golf Resort & Spa with 36 holes open to the public at reasonable rates year round. The City of Rancho Mirage promises the seasoned traveler and the discriminating resident the perfect combination of luxury, value and access to some of North America's finest golf, spa and dining opportunities right in the Heart of the Palm Springs Valley.

BROKER CONTACT

Erik Christianson, SVP
C (949) 910-7337
echristianson@hoffmanland.com
 CA DRE #01475105

Coachella Valley Office: 777 E Tahquitz Canyon Way, Ste 200, Palm Springs, CA 92262 | T (760) 705-0920 | CA Corp. Lic # 01473762

