

560

WEST 19TH STREET

Costa Mesa, CA 92627

2,500 sq. ft. eastern end cap



Eric Friedland (818) 398.0354 eric@cirecre.com



560

WEST 19TH STREET

Costa Mesa, CA 92627

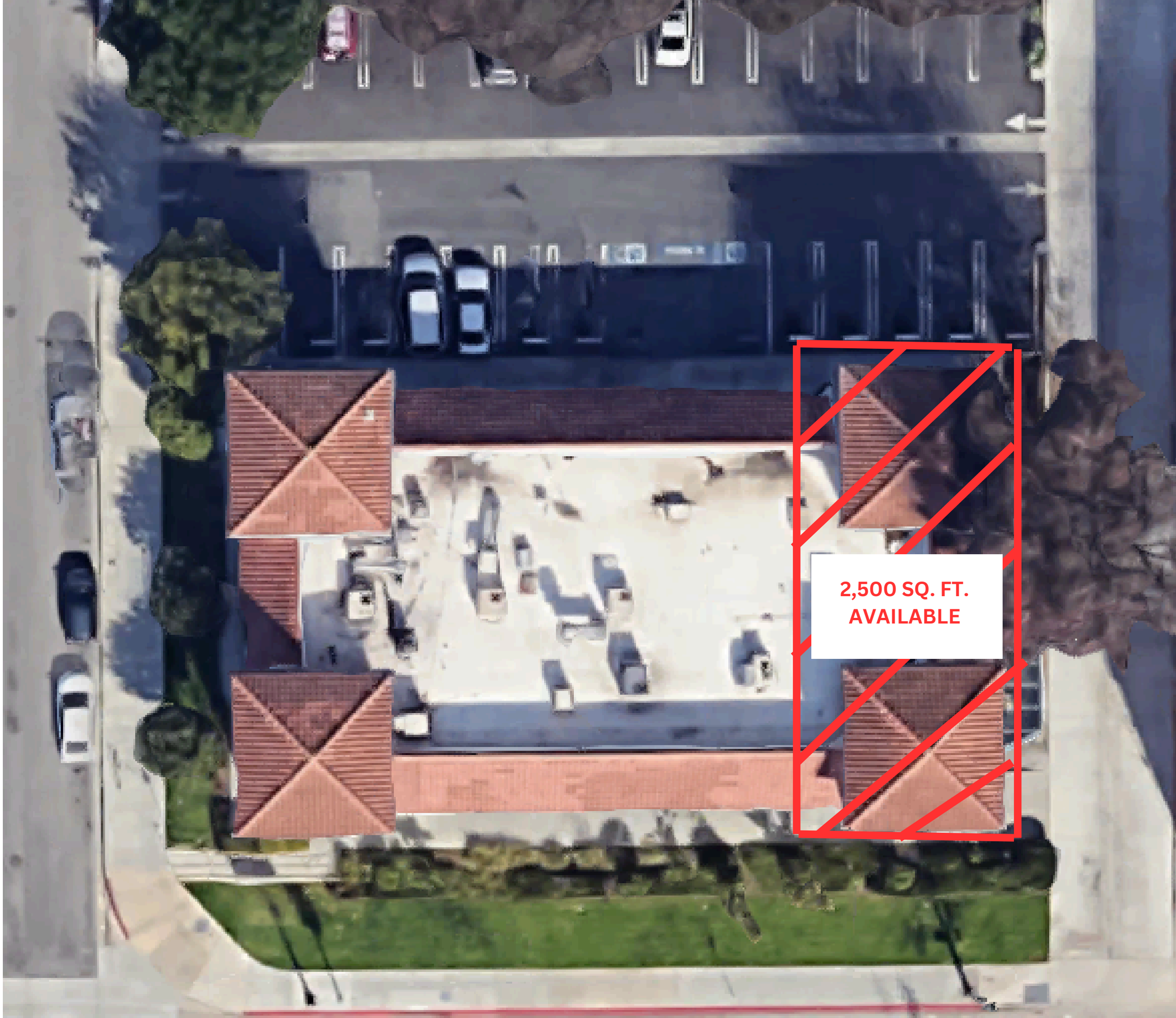


PROPERTY HIGHLIGHTS

FEATURES

- End-Cap Retail Space available
- High Traffic Retail Corridor
- Ample Parking
- Rare space in tight Costa Mesa Trade Area





SITE PLAN

560
WEST 19TH
STREET

Costa Mesa, CA 92627

560 WEST 19TH STREET

Costa Mesa, CA 92627

TRADE AREA & DEMOGRAPHICS

one mile

POPULATION / 27,581

AVERAGE HH INCOME / \$71,463

three miles

POPULATION / 124,458

AVERAGE HH INCOME / \$108,900

five miles

POPULATION / 238,031

AVERAGE HH INCOME / \$109,289

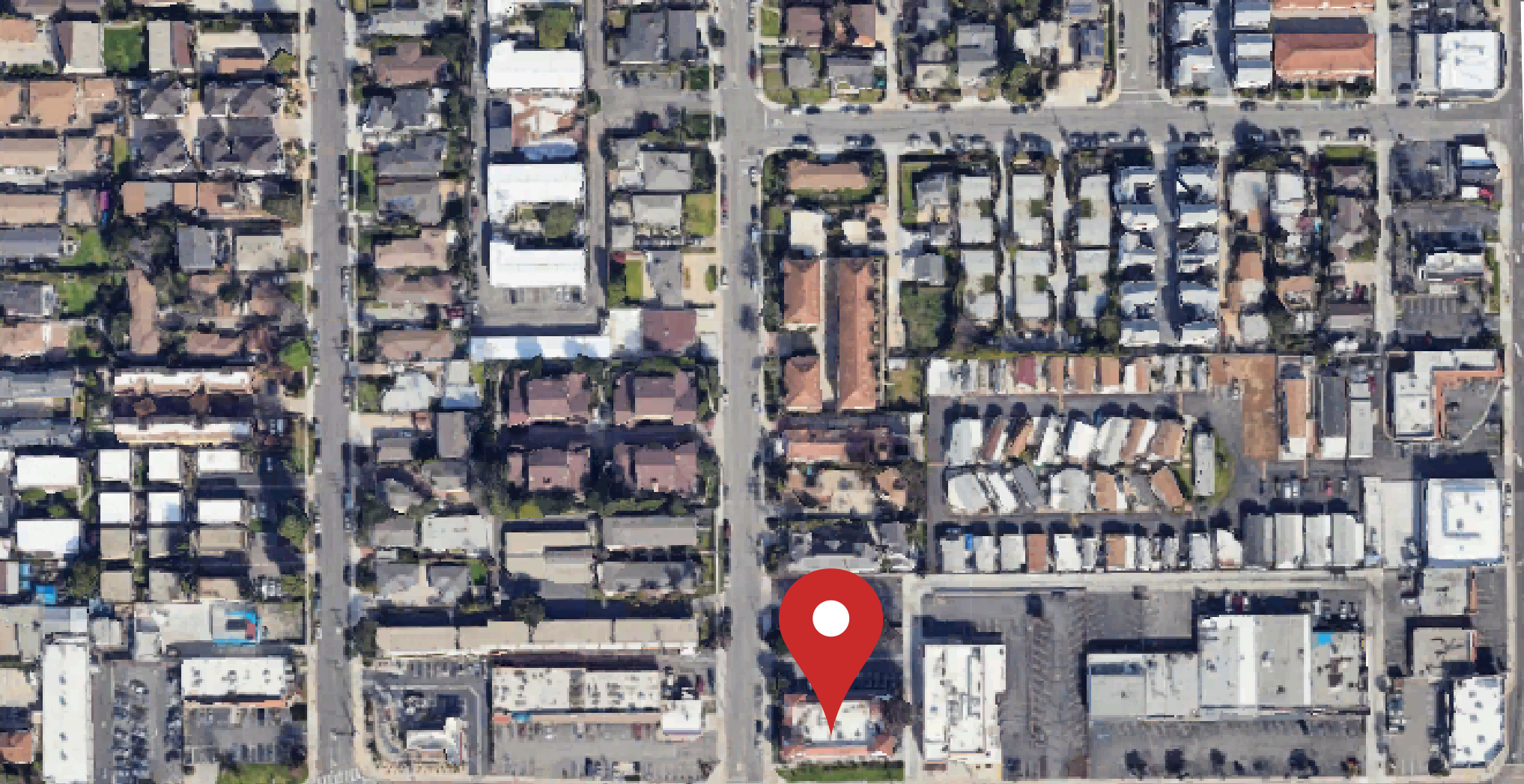


W. 19th Street



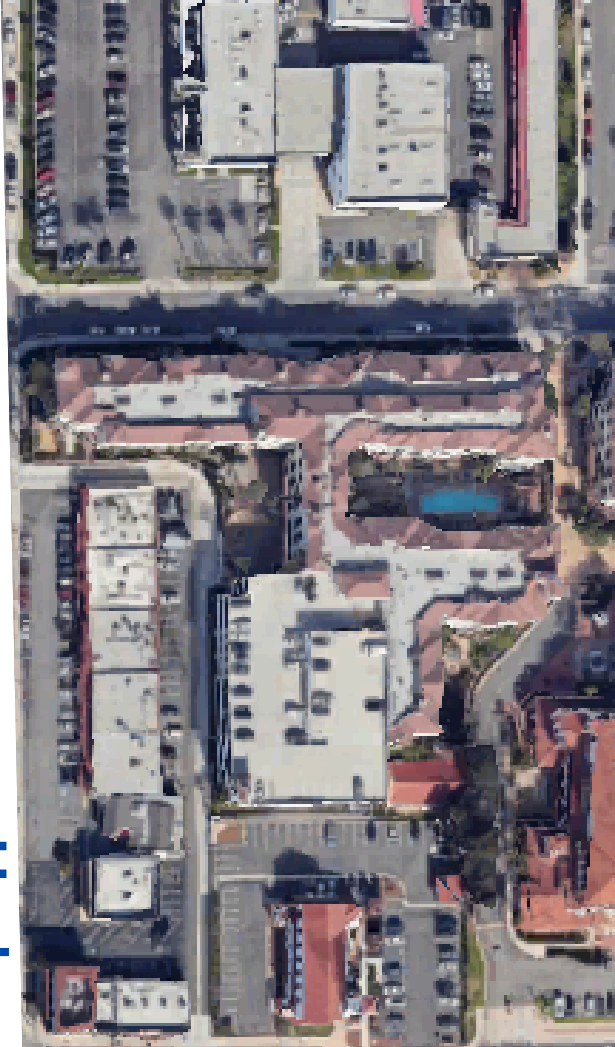
HARBOR BLVD.

NEWPORT BLVD.



W. 19th Street

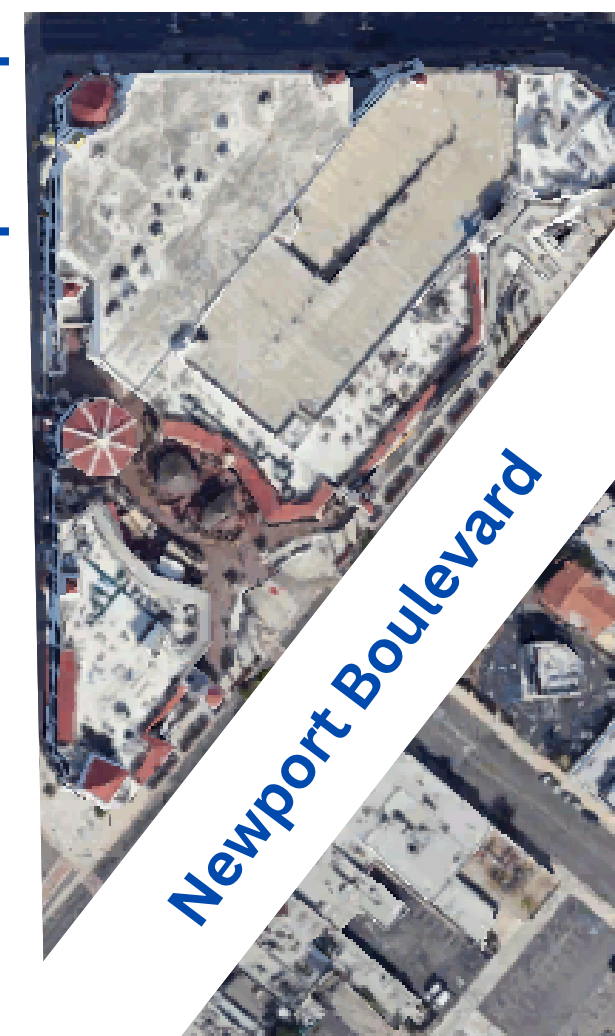
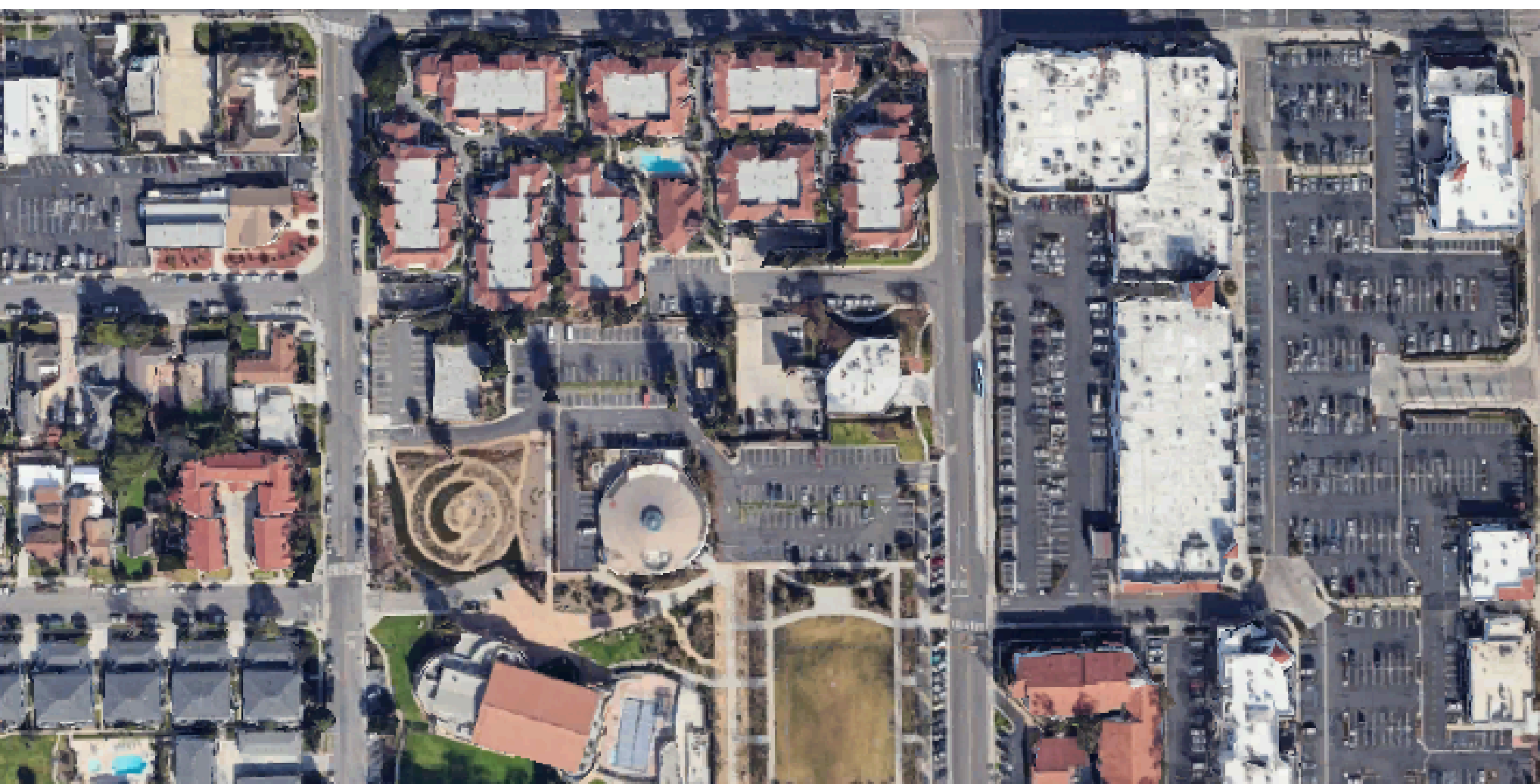
Harbor Boulevard



560

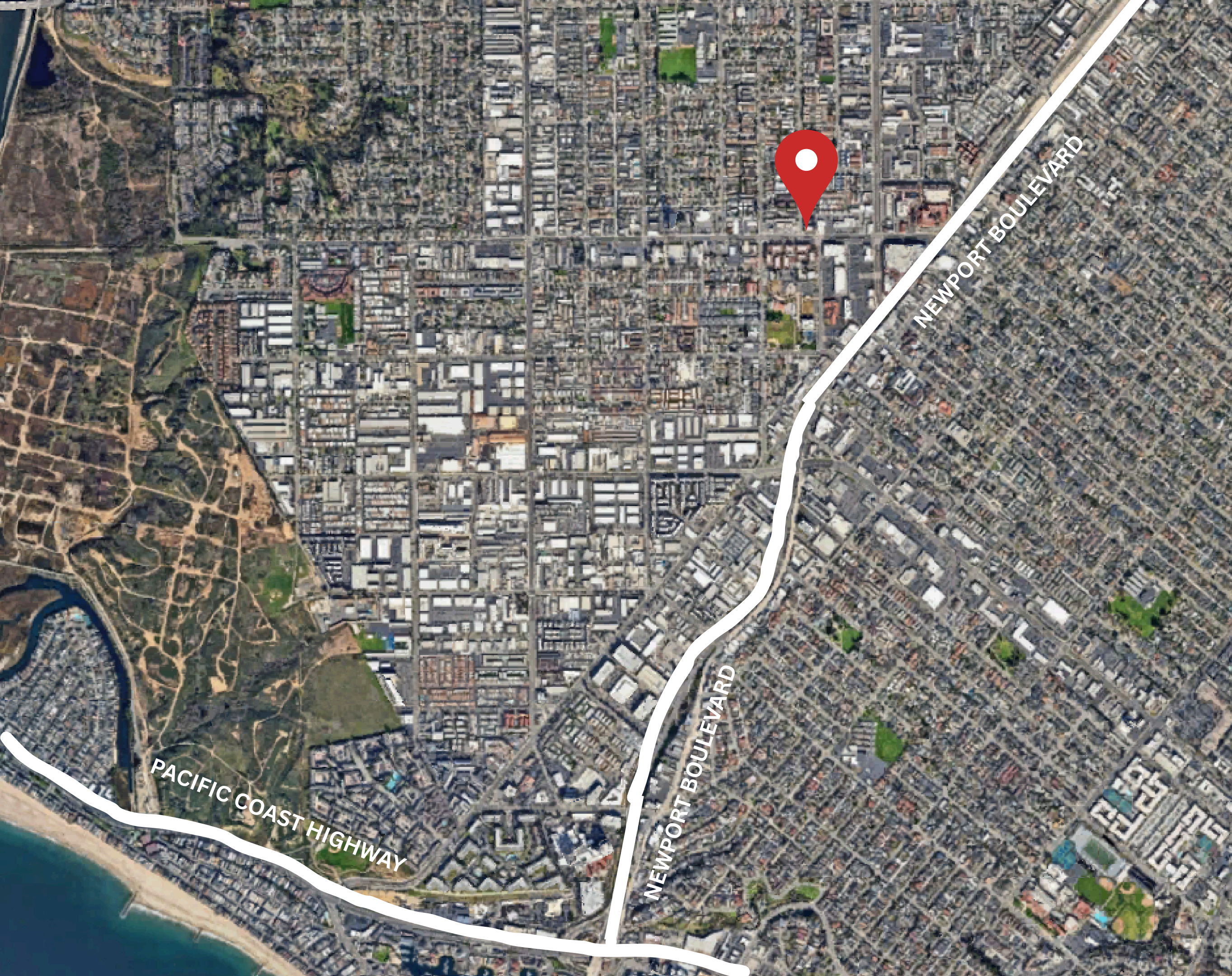
WEST 19TH
STREET

Costa Mesa, CA 92627



Newport Boulevard

NEIGHBORHOOD
MAP



560

**WEST 19TH
STREET**

Costa Mesa, CA 92627

**MAJOR
THOROUGHFARES**

560

WEST 19TH
STREET

Costa Mesa, CA 92627

PROPERTY IMAGES





560

WEST 19TH STREET

Costa Mesa, CA 92627

FOR LEASING INFORMATION, PLEASE CONTACT:

Eric Friedland • (818) 398.0354 • DRE#01969648
President

CIRE Commercial Real Estate Inc. | eric@cirecre.com
 www.cirecre.com

This information contained herein was obtained from sources deemed to be reliable; however CIRE Commercial Real Estate Inc. makes no guarantees, warranties or representations as to be completeness or accuracy thereof.

