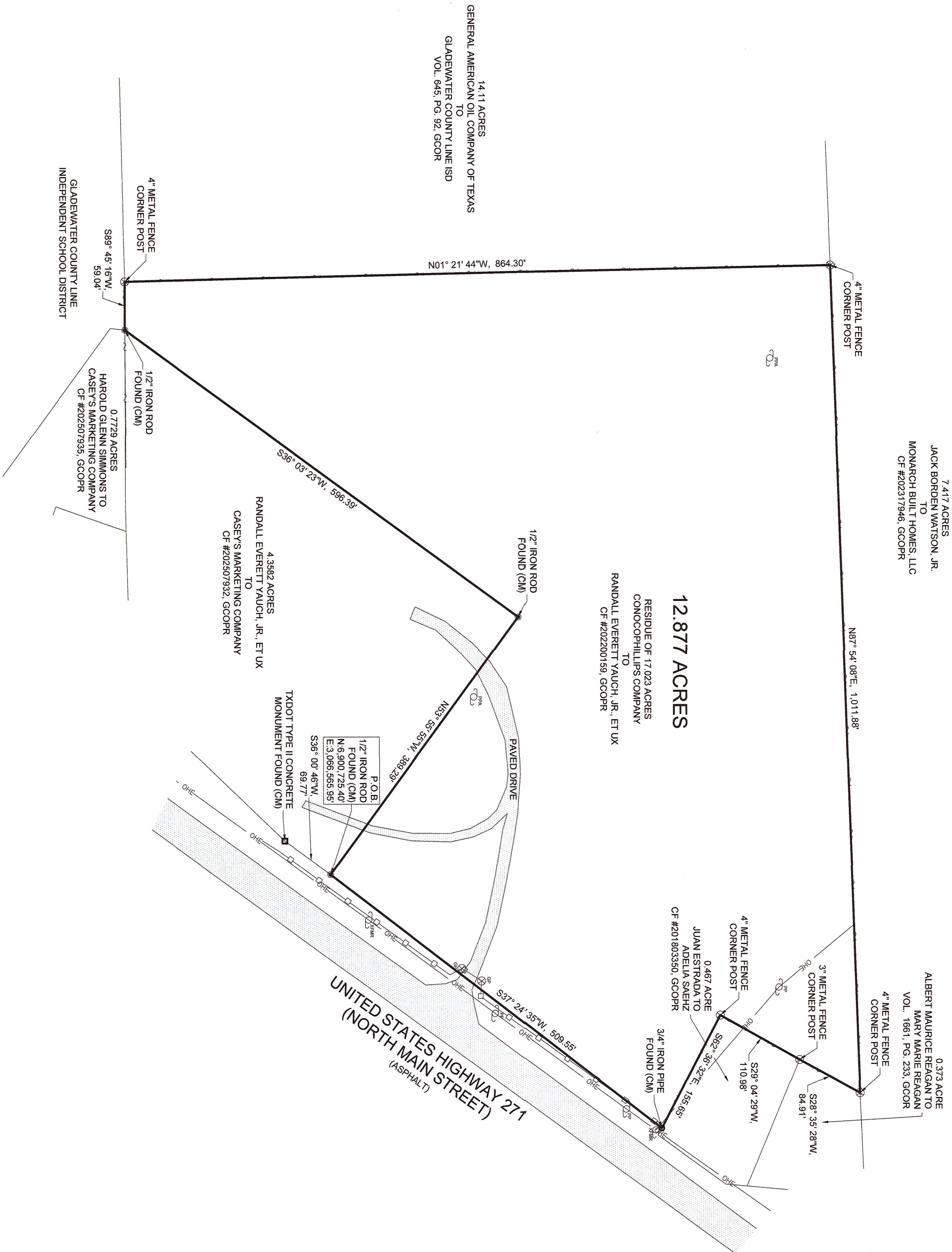
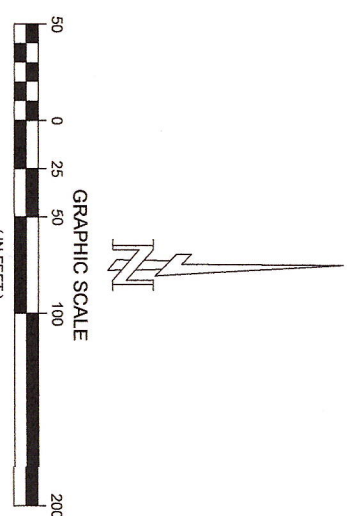


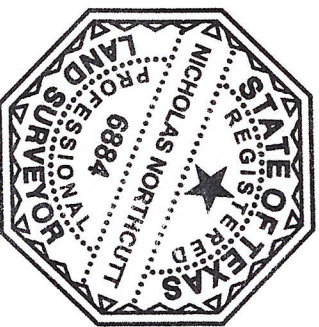
NOTES

1. BEARINGS ARE BASED UPON THE TEXAS COORDINATE SYSTEM OF 1983 (NAD83), NORTH CENTRAL ZONE.
2. DISTANCES SHOWN ARE GRID DISTANCES. TO CONVERT TO SURFACE DISTANCES DIVIDE GRID DISTANCES BY THE SCALE FACTOR: 0.9998956.
3. A CERTIFIED METES AND BOUNDS DESCRIPTION HAS BEEN PREPARED UNDER THE SAME JOB NUMBER AS A PART OF THIS PROFESSIONAL SERVICE.
4. THIS PROFESSIONAL SERVICE WAS PERFORMED WITHOUT BENEFIT OF HAVING BEEN FURNISHED A TITLE COMMITMENT. EASEMENTS AND/OR OTHER MATTERS AND/OR ISSUES RELATING TO TITLE COULD AND MAY EXIST.
5. ACCORDING TO TEXAS LOCAL GOVERNMENT CODE, CHAPTER 212.004 AND 212.005, DIVIDING ANY TRACT OR LOT INTO TWO OR MORE PARTS WITHOUT BENEFIT OF A SUBDIVISION PLAT APPROVED AND RECORDED WITH THE COUNTY CLERK, IS A VIOLATION OF CITY ORDINANCE AND/OR STATE LAW, SUBJECTING THE VIOLATOR TO FINES AND/OR THE WITHHOLDING OF UTILITIES AND BUILDING PERMITS.
6. THERE ARE NO VISIBLE EASEMENTS, ENCROACHMENTS OR PROTRUSIONS EXCEPT AS SHOWN.



SURVEYORS CERTIFICATION

I HEREBY CERTIFY THIS PLAT AS A REPRESENTATION OF A SURVEY MADE ON THE GROUND UNDER MY SUPERVISION, THAT IT REFLECTS THE FACTS AS FOUND AT THE TIME OF SAID SURVEY, AND THAT IT SUBSTANTIALLY CONFORMS TO THE CURRENT GENERAL RULES OF PROCEDURES AND PRACTICES, ESTABLISHED BY THE TEXAS BOARD OF PROFESSIONAL ENGINEERS AND LAND SURVEYORS.



NICHOLAS NORTHCUTT
PROFESSIONAL LAND SURVEYOR
TEXAS REGISTRATION NO. 6884
JULY 15, 2025
DATE

LEGEND	
	POWER POLE
	POWER POLE WITH TRANSFORMER
	POWER POLE ABANDONED
	GATE POST
	CONTROLLING MONUMENT
	CHAIN LINK FENCE
	POLY FENCE
	OVERHEAD ELECTRIC



PLAT OF SURVEY OF
12.877 ACRES
BEING A PORTION OF 17.023 ACRES
CONOCOPHILLIPS COMPANY TO
RANDALL EVERETT YAUCH, JR., ET UX
CLERKS FILE #202200159, GCOPR
IN THE T. ALLEN SURVEY, A-7
GREGG COUNTY, TEXAS