

RE/MAX

CONNECTION REALTORS



4901 Central College Road
Westerville, OH 43081



Office: 614-342-TEAM (8326)
Toll Free: 877-693-SOLD (7653)
web: www.delena.com
e mail: delena@delena.com

Presented by

*DeLena
Ciamacco*



Special Features

- Brick Exterior
- Asphalt Drive
- Window Shutters
- Front Storm Door
- (2) Porch Lights
- Front Covered Porch
- Concrete Ramp
- New Roof ~ 2018/2019
- Crawl Space
- City Water & Septic System
- (2) HVAC Units
- Well Used for Watering
- Current Zoning = Rural District

Permitted Uses:

Single-family dwelling, agricultural purposes, religious facilities, schools, public parks, libraries, fire/police stations, water infrastructure, nonprofit recreation, golf courses (non-commercial), and accessory day care within schools or churches.

All information is believed to be accurate but is not warranted.

Additional Details

Sales Price: \$749,900

Year Built: 1972

Total Square Footage: 2,388

Home Style: One Story

Subdivision: City of Columbus

Lot Size: 135 x 469

Acreage: 1.46

County: Franklin

Tax Parcel & District: 010-285008-00

Annual Taxes: Exempt

MLS #: 225020140 - Single Family
225020137 - Office

Possession: Negotiable

Garage/Storage: 6 Car Garage, Outbuilding, & Barn

Construction: Brick Exterior

Entry

- DIMENSIONS INCLUDED IN LIVING ROOM

- Bamboo flooring
- Ivory painted walls
- Open to Living Room



Living Room

- 20'5 x 13'5

- Blue carpet
- Ivory painted walls
- Ceiling light
- Stone fireplace with mantle & raised hearth



Hall to Offices

- 8'1 x 7'4

- Bamboo flooring
- Ivory painted walls
- Closet with mechanicals
- Attic access
- Ceiling light



Office (Rear Right)

- 17'5 x 10'4

- Blue carpet
- Tan painted walls
- Can lighting
- Sitting area



Office (Front Right)

- 17'2 x 12'10
- Blue carpet
- Tan painted walls
- Ceiling light
- Mini blinds



Kitchen

- 10'11 x 11'6
- Ceramic tile flooring
- Ivory painted walls
- Oak cabinets
- Corian countertops
- Maytag® dishwasher
- Maytag® dishwasher
- White Westinghouse® refrigerator is negotiable
- Microwave is negotiable



Main Hall Bath

- 9'1 x 7'4
- Ceramic tile flooring
- Ivory painted walls
- Can lighting
- Ceiling exhaust
- Open vanity
- 3 bulb wall light



Dinette/Dining Area_____

- 19'10 x 11'6
- Blue carpet
- Ivory painted walls
- French doors to patio
- Ceiling light
- Mini blinds



Hall to the Addition_____

- 4'0 x 18'5
- Blue carpet
- Ivory painted walls



Office #3 (Far Rear Right Center)_____

- 13'1 x 12'2
- Tan carpet
- Tan painted walls
- Ceiling light
- Open closet
- Mini blinds



Office #4 (Far Rear Right)_____

- 17'5 x 12'5
- Blue carpet
- Tan painted walls
- Ceiling light
- Open closet
- Mini blinds



Mechanical/Laundry Room

- 12'1 x 12'1
- Luxury vinyl plank flooring
- Blue painted walls
- Wall cabinets
- New gas water heater ~ 2018/2019
- Electric dryer hookup
- Ceiling light
- Rear door to yard



Office #5

- 8'0 x 9'7
- Tan carpet
- Blue painted walls
- Closet with crawl access
- Attic access
- Acoustic ceiling tiles



Office #6

- 10'3 x 9'5
- Tan carpet
- Blue painted walls
- Acoustic ceiling tiles
- Platform
- 2" blinds



Office #7

- 12'1 x 7'8
- Tan carpet
- Blue painted walls
- Acoustic ceiling tiles
- Window well
- 2" blinds



Lobby/Side Entry

- 8'5 x 10'9

- Tan carpet
- Blue painted walls
- Acoustic ceiling tiles
- Glass wall
- Door



Full Bath

- 5'8 x 4'8

- Ceramic tile flooring
- Walltex® walls
- Shower stall
- Enclosed vanity with single bowl sinktop
- Lighted ceiling exhaust
- 2 bulb wall light



Exterior Features

Parking

- 13 designated spaces (2 are ADA)



Outbuilding

- 44 x 50
- Vinyl exterior
- Side service door
- Entry



Dry Storage

- 12'0 x 18'0
- Heated
- Finished walls
- Ceiling lights



Barn

- 36'6 x 26'7
- Concrete flooring
- Wood shelves
- (1) siding door
- Front & rear doors



Rear of Barn

- 48'10 x 15'1
- 6 car garage
- (3) double doors
- Concrete flooring
- Water hydrant



Garden Area



Exterior Features



Rear Patio & Exterior



Front Entrance



Front Exterior



Side Exterior

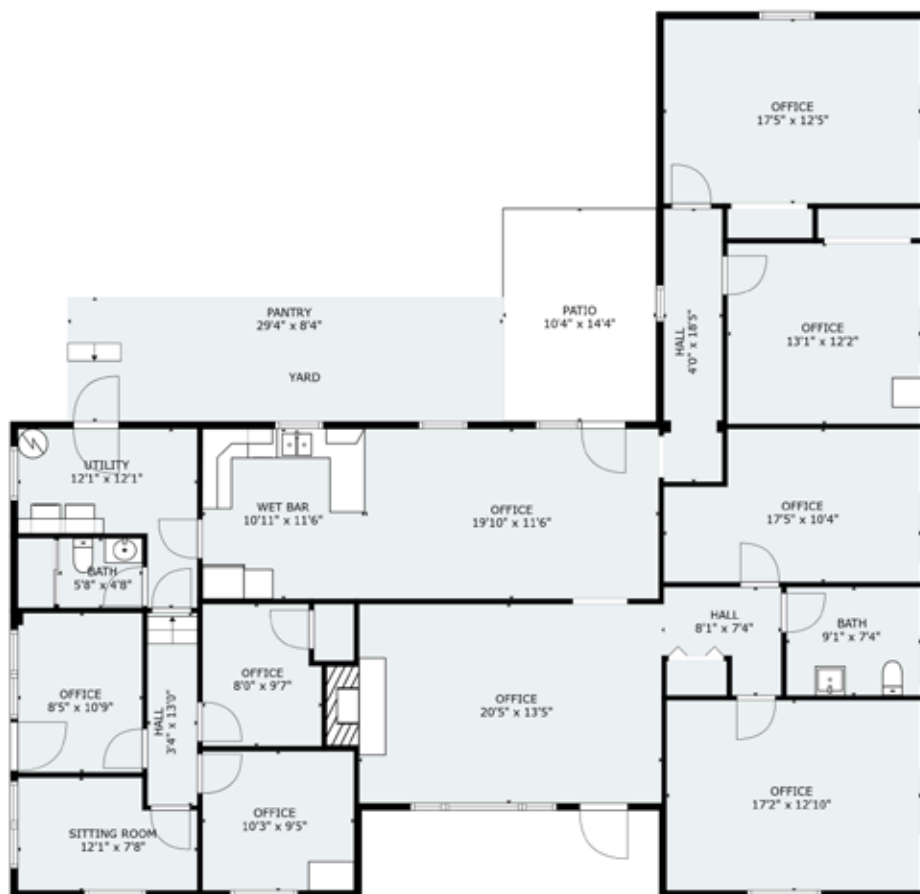


Rear Yard

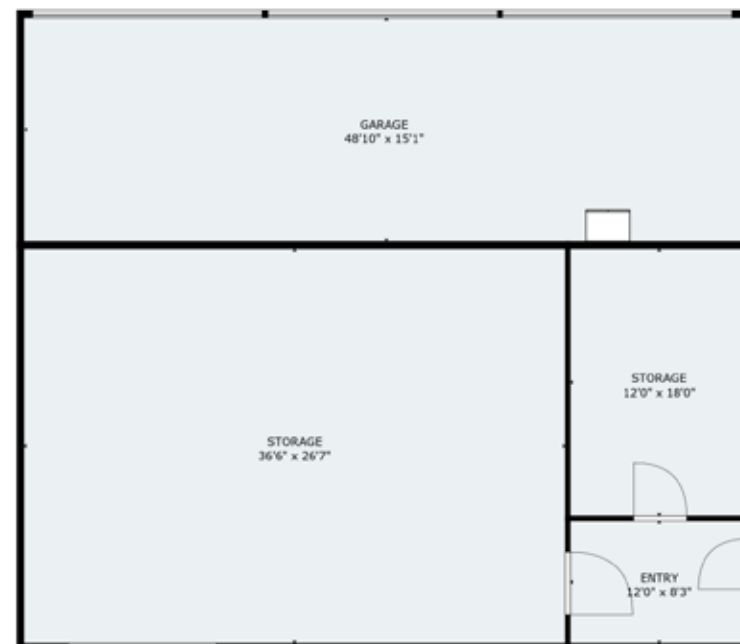
Aerial Views



Floorplan



FLOOR 1

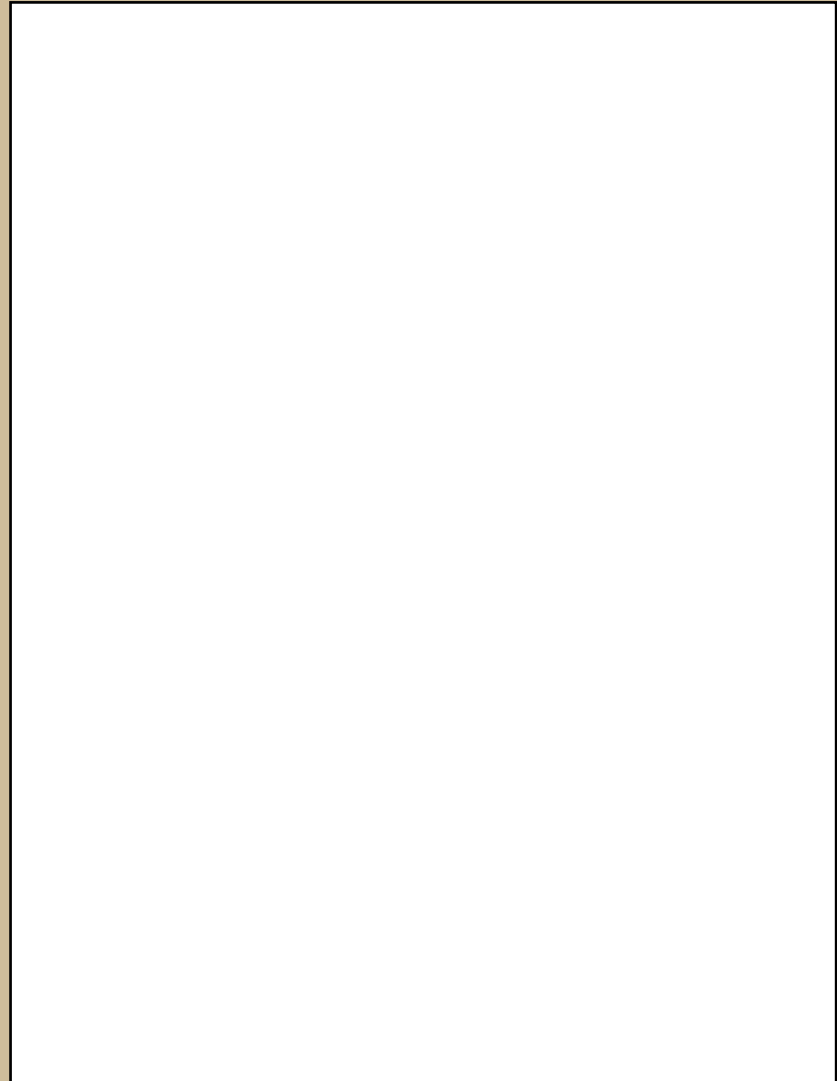


FLOOR 2

Aerial View



Notes



All materials presented are believed to the best of our ability to be accurate and true as represented but is not warranted . All materials on are owned by DeLena Ciamacco and/or ReMax Connection Realtors, its corporate affiliates or its third-party vendors. All rights reserved.

No reproduction, distribution, or transmission of the materials is permitted without the written permission of DeLena Ciamacco. Any rights not expressly granted herein are reserved.

REALTORS® shall not deny equal professional services to any person for reasons of race, color, religion, sex, handicap, familial status, or national origin. REALTORS® shall not be a party to any plan or agreement to discriminate against a person or persons on the basis of race, color, religion, sex, handicap, familial status or national origin. A REALTOR® pledges to conduct business in keeping with the spirit and letter of the Code of Ethics. Article 10 imposes obligations upon REALTORS® and is also a firm statement of support for equal opportunity in housing.