

Executive Office Space For Lease



192 E Bay Street | Charleston, SC

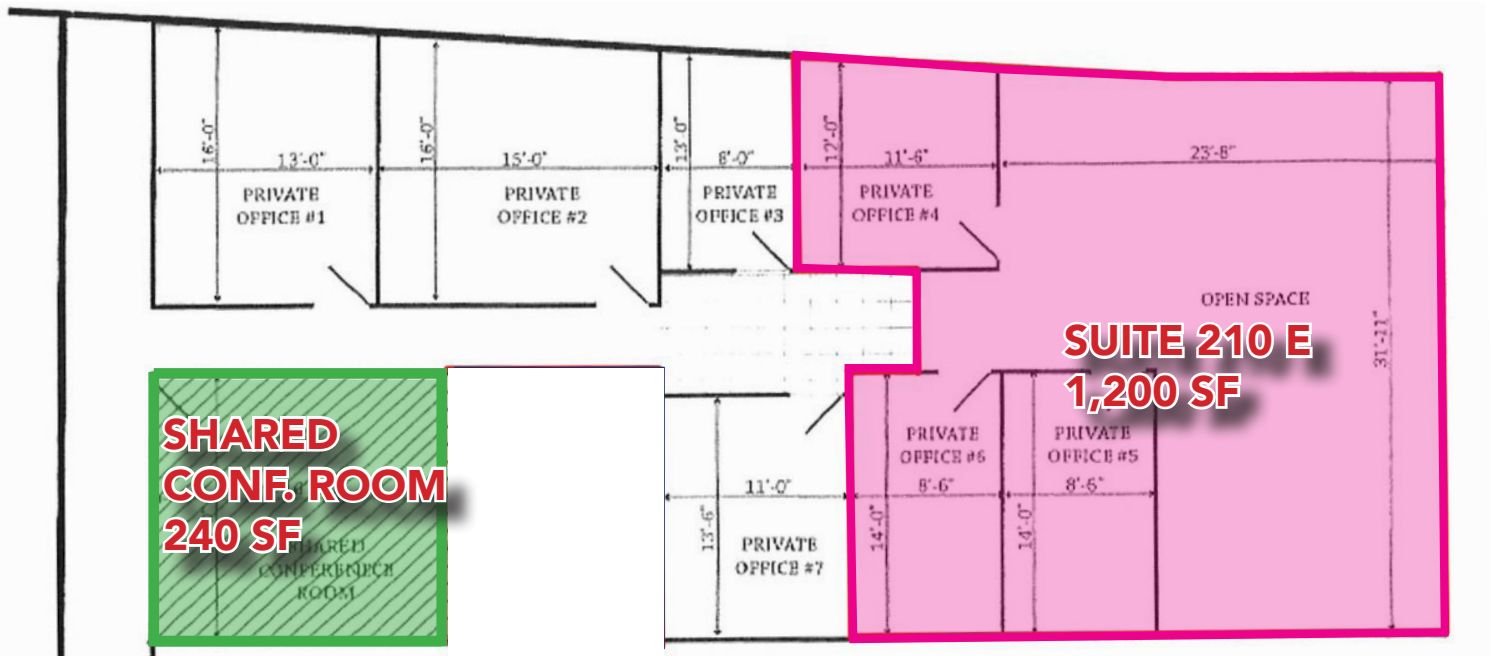
Looking to downsize? Or just need a small office to get out of the house? Second floor executive office suites now available for lease at 192 East Bay St in the heart of historic downtown Charleston. The entrance to the building is directly to the right of the prominent local restaurant, Slightly North of Broad. Accessible by key FOB, a hallway with exposed brick, mirrors and tiles leads you to the elevator or stairs that you can take up to the second floor suites. 210-E is 1,200 SF with three private offices. Suite have brand new HVAC, carpet, paint, lighting, and ceiling tiles. Suite has access to a 240 SF shared conference room at the end of the hall. Brand new lighting, flooring, ceiling tiles and updates to the common area hallway, and a brand new roof was recently installed over the spaces as well. From this location you can easily walk to a number of downtown Charleston's great parks, restaurants, bars, and shopping.



COLDWELL BANKER
COMMERCIAL
ATLANTIC

192 East Bay Street | Charleston, SC

Steve Hund • shund@cbatlantic.com



Available: Suite 210 E

**Lease Rate: \$2,700 (Monthly)
Gross Lease**

SF: 1,200 SF

Tax ID: 458-09-02-085; 086



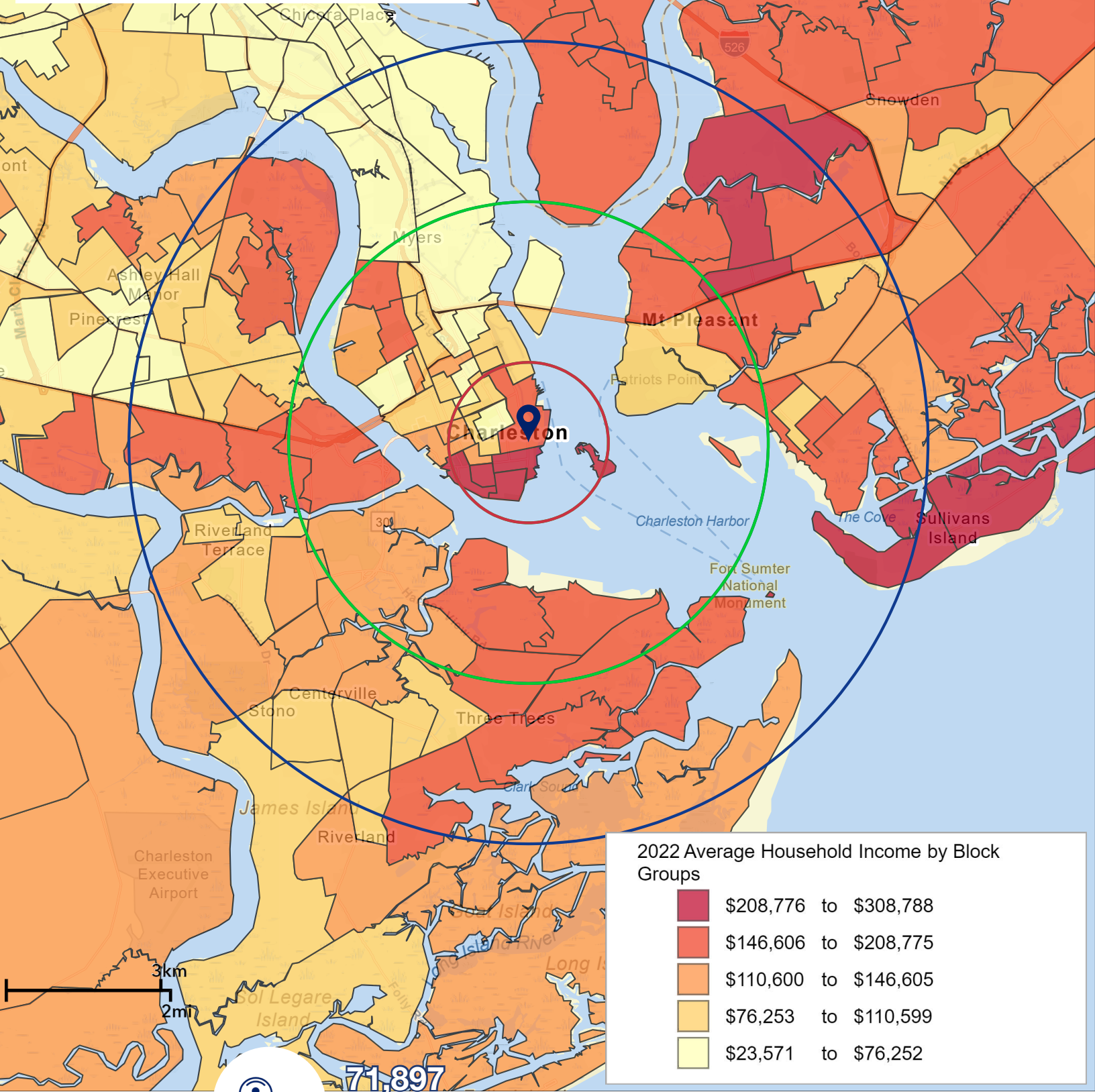
Demographics	1 Mile	3 Mile	5 Mile
Total Population:	11,187	40,202	71,897
Total Households:	5,170	17,847	31,451
Average HH Income:	\$154,404	\$115,396	\$132,886



3,999
Businesses
within 5 Miles

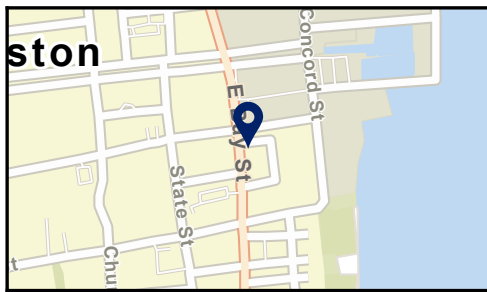
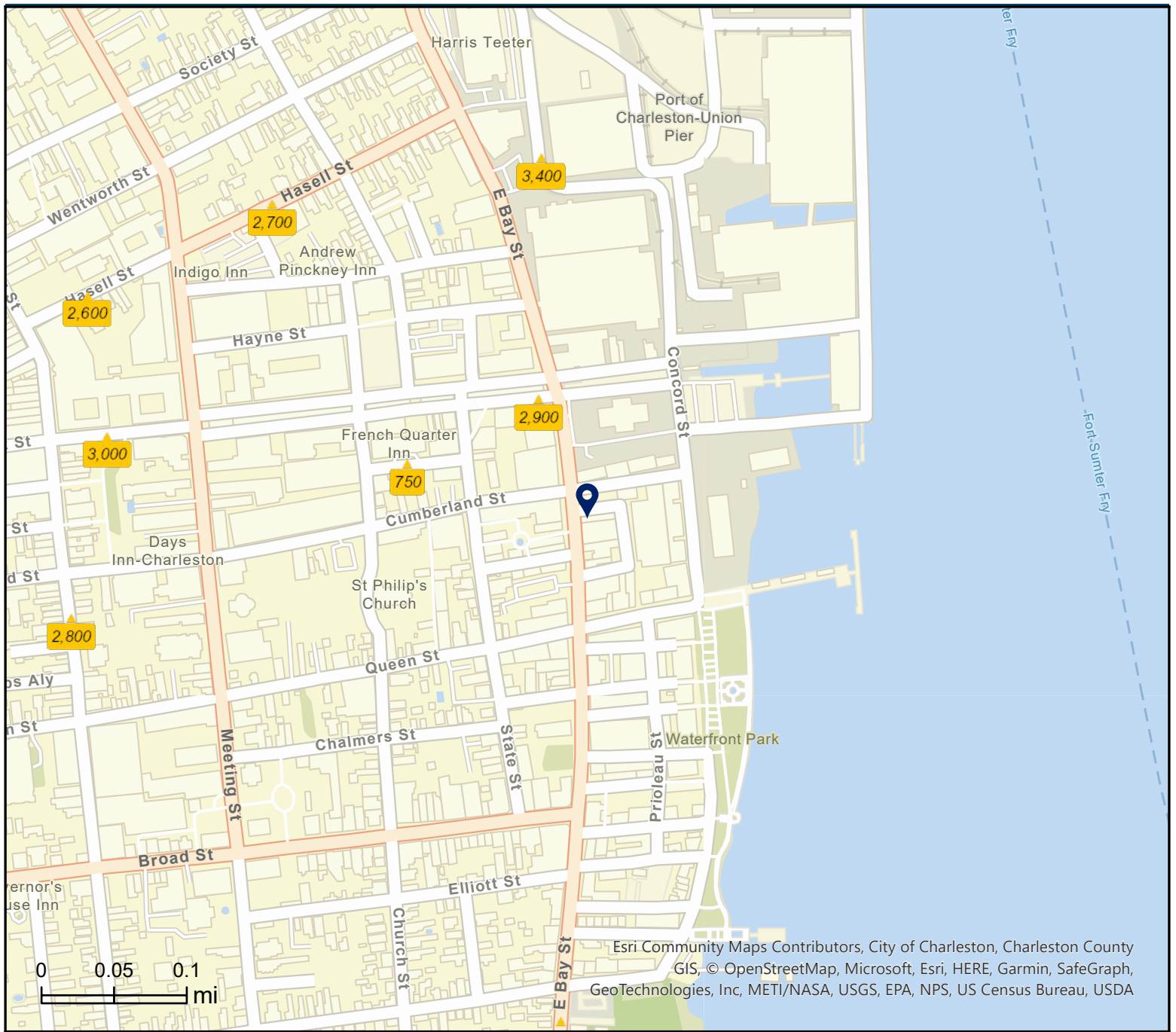


33,144
Employees
within 5 Miles



71,897
Population
within 5 Miles

All demographics based on Esri forecasts for 2022



- Average Daily Traffic Volume**
- ▲ Up to 6,000 vehicles per day
 - ▲ 6,001 - 15,000
 - ▲ 15,001 - 30,000
 - ▲ 30,001 - 50,000
 - ▲ 50,001 - 100,000
 - ▲ More than 100,000 per day



Source: ©2022 Kalibrate Technologies (Q1 2022).

Esri Community Maps Contributors, City of Charleston, Charleston County GIS, © OpenStreetMap, Microsoft, Esri, HERE, Garmin, SafeGraph, GeoTechnologies, Inc, METI/NASA, USGS, EPA, NPS, US Census Bureau, USDA



STEVE HUND

Broker

843.744.9877 (O)

843.990.2417 (D)

shund@cbcatlantic.com



**COLDWELL BANKER
COMMERCIAL
ATLANTIC**

3506 W Montague Ave Suite 200
North Charleston, SC 29418
843.744.9877
cbcatlantic.com | cbcretailatlantic.com

The information contained herein should be considered confidential and remains the sole property of Coldwell Banker Commercial Atlantic at all times. Although every effort has been made to ensure accuracy, no liability will be accepted for any errors or omissions. Disclosure of any information contained herein is prohibited except with the express written permission of Coldwell Banker Commercial Atlantic.