



**ALAMO**

J U N C T I O N  
R A I L ★ P A R K

SOUTH TEXAS' PREMIER INDUSTRIAL & MANUFACTURING PARK



- Industrial Sites Available for Lease/Build-to-Suit/Design Build
- Dual Rail Service Offering Competitive Pricing (Union Pacific & BNSF)
- State-Of-The-Art Rail Terminal & Transload Facility
- Located in Opportunity Zone
- Over 15 miles of Internal Track Developed to Date
- 100% Net Sites with Off-Site Detention in Place
- Guaranteed Same-Day Interchange Service
- Four (4) 8,500 LF Unit Train Loop Tracks
- Five (5) 4,300 LF Manifest Interchange Tracks
- 650 Car Spots with Truck Access for Transloading
- Accommodates Manifest and Unit Train Service
- Easy Access to Park via IH-37, Loop 1604 & Hwy 181

Developer:



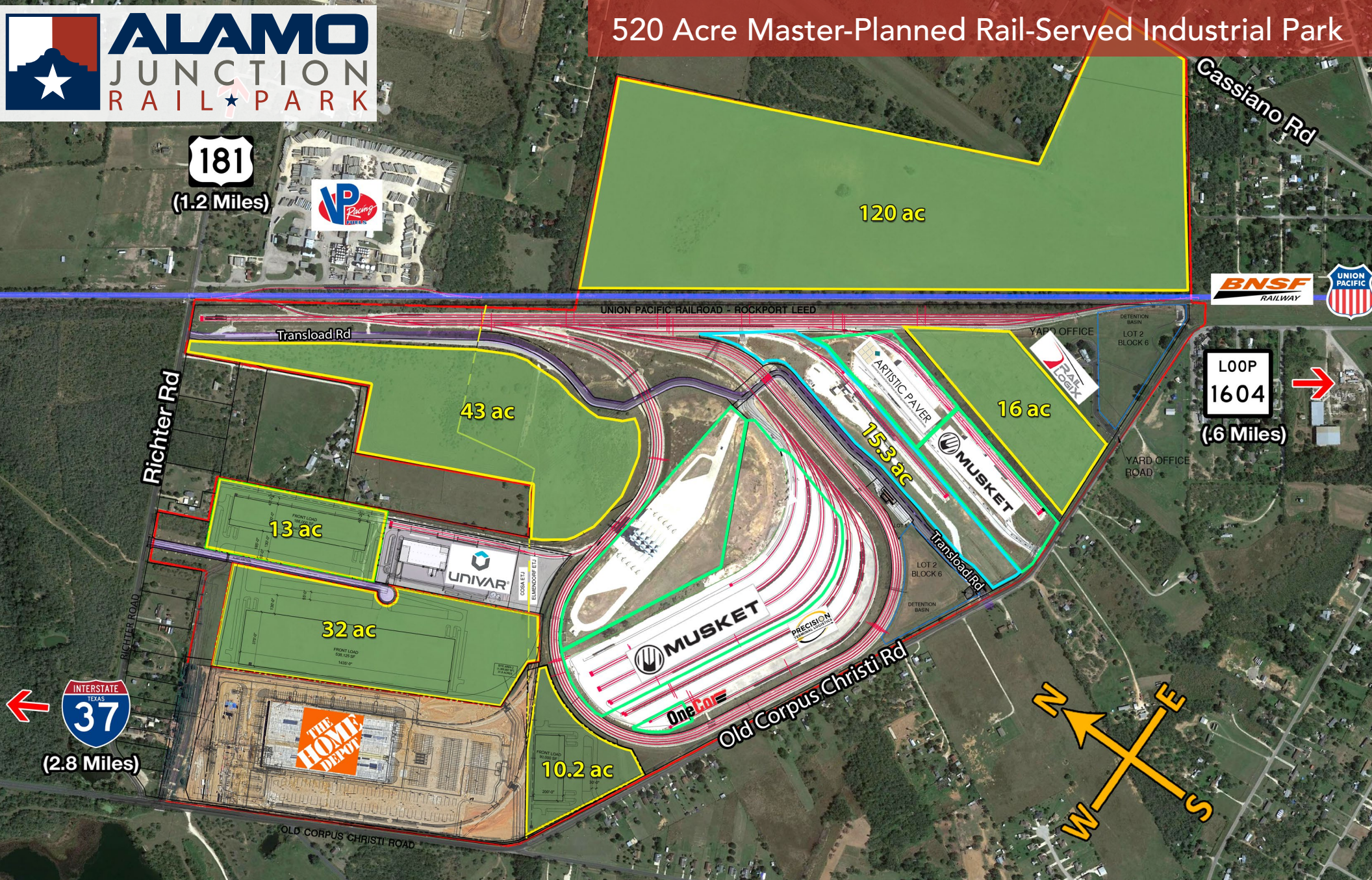
Rail Operator:



Real Estate Broker:



**John Greg Turcotte, CCIM**  
210.710.8966  
jg@turcotteres.com



**181**  
(1.2 Miles)

**LOOP 1604**  
(.6 Miles)

**INTERSTATE 37**  
TEXAS  
(2.8 Miles)

Developer:



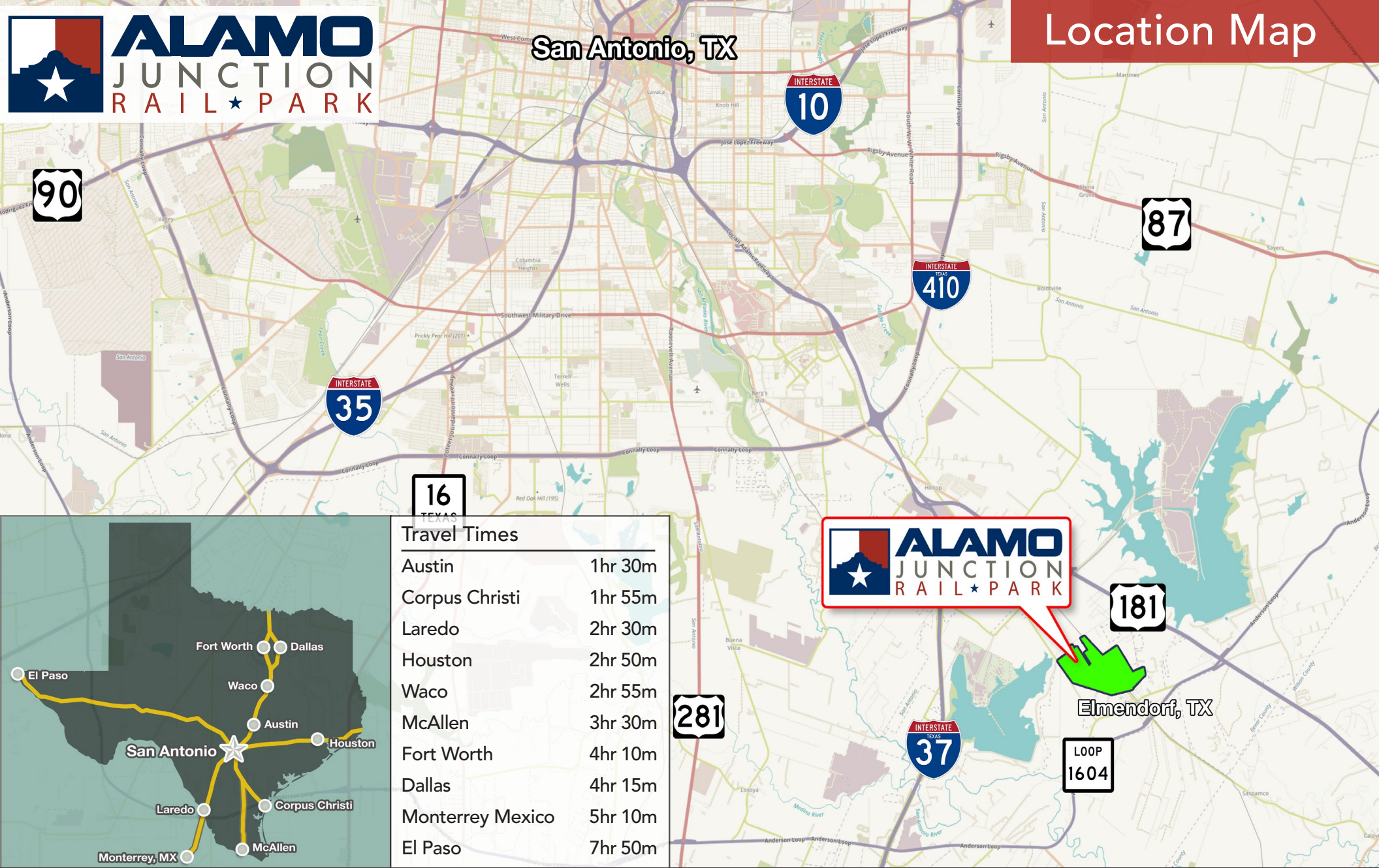
Rail Operator:



Real Estate Broker:



John Greg Turcotte, CCIM  
210.710.8966  
jg@turcotteres.com



Travel Times	
Austin	1hr 30m
Corpus Christi	1hr 55m
Laredo	2hr 30m
Houston	2hr 50m
Waco	2hr 55m
McAllen	3hr 30m
Fort Worth	4hr 10m
Dallas	4hr 15m
Monterrey Mexico	5hr 10m
El Paso	7hr 50m

Developer:



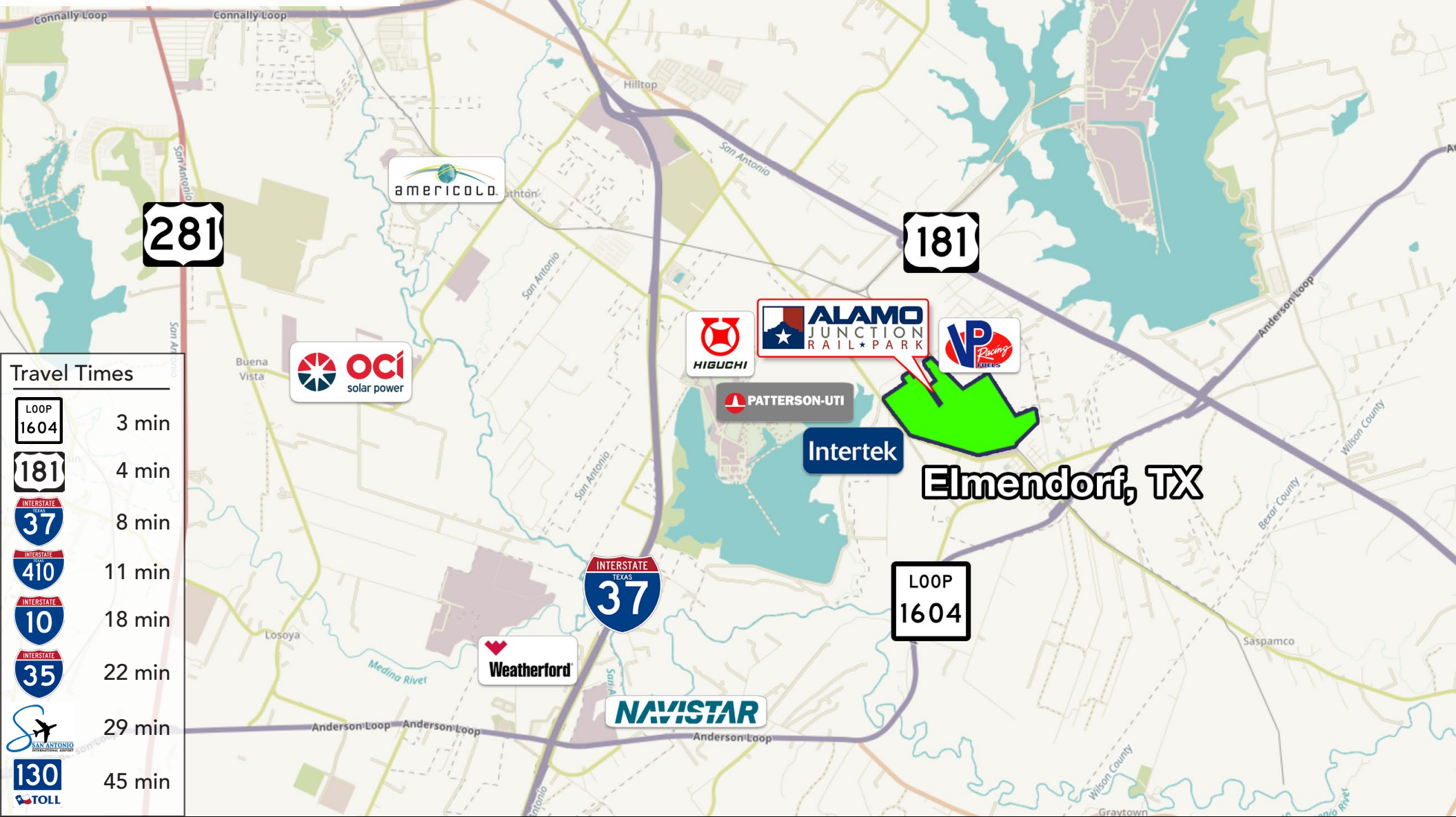
Rail Operator:



Real Estate Broker:



**John Greg Turcotte, CCIM**  
 210.710.8966  
 jg@turcotteres.com



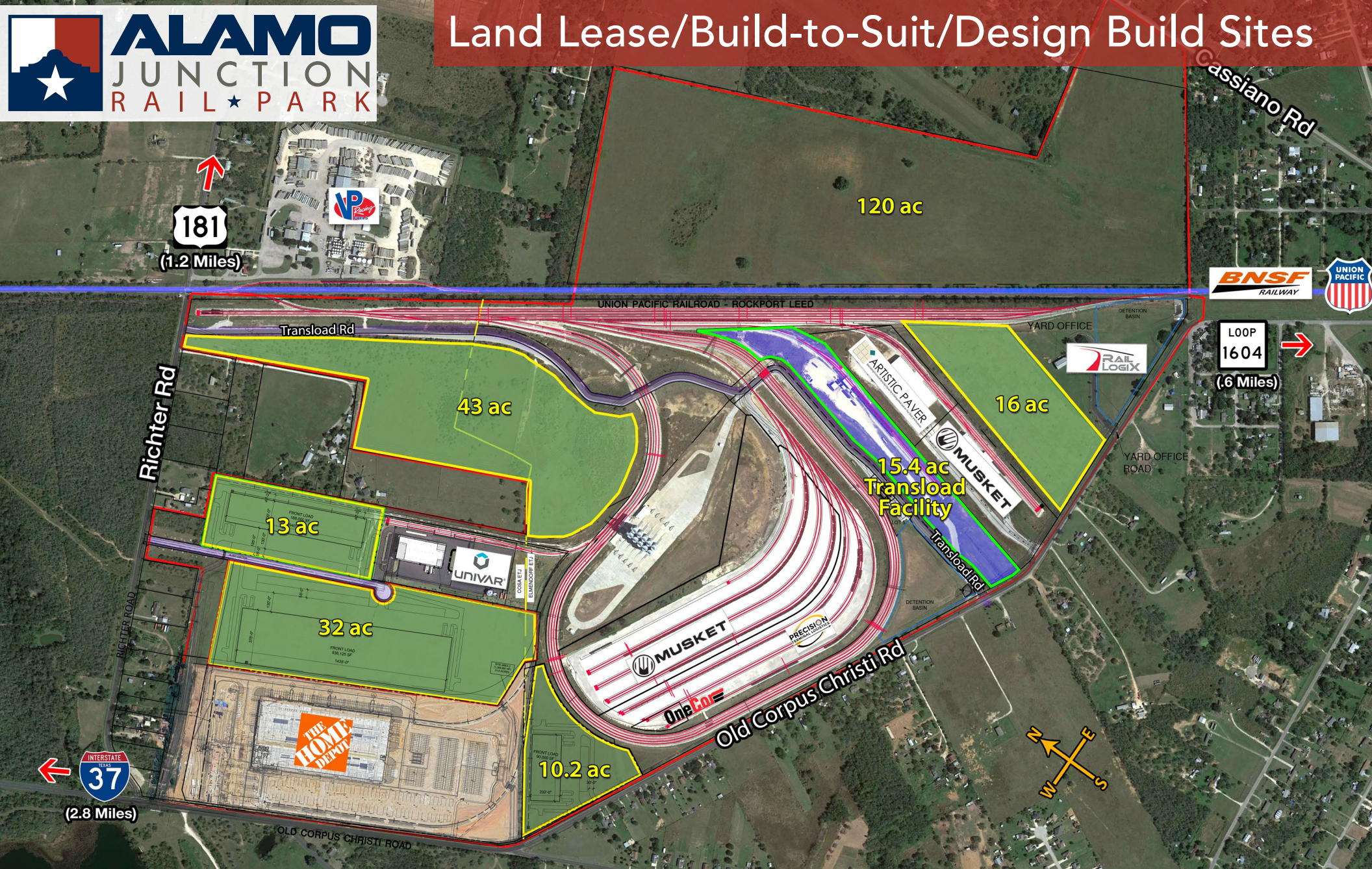
Developer:

Rail Operator:

Real Estate Broker:



**John Greg Turcotte, CCIM**  
 210.710.8966  
 jg@turcotteres.com



Developer:



Rail Operator:



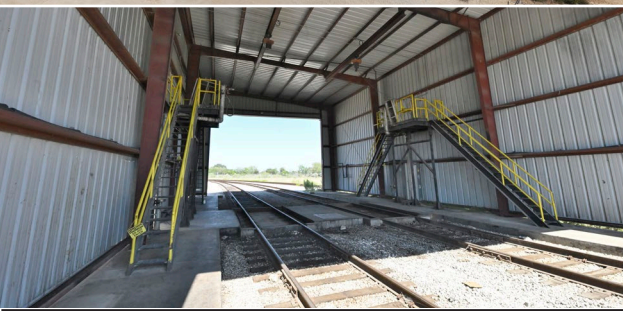
Real Estate Broker:



John Greg Turcotte, CCIM  
210.710.8966  
jg@turcottes.com



# Available | 15.4 AC Transload Facility



## Property Details

- Property Size: 15.4 acres
- Four (4) spurs containing ~4,400 linear feet of track
- Includes 1.75 Acres of additional stabilize railbed in place
- Electric, Water and Septic available
- City of Elmhendorf

Developer:



Rail Operator:



Real Estate Broker:



John Greg Turcotte, CCIM  
 210.710.8966  
[jg@turcotteres.com](mailto:jg@turcotteres.com)



# ALAMO JUNCTION RAIL PARK



Developer:



Rail Operator:

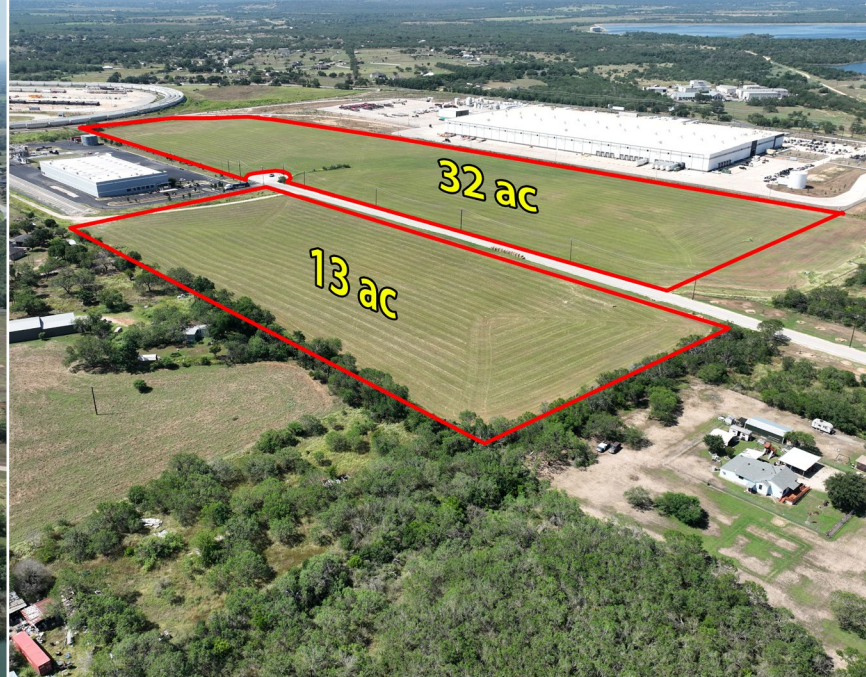


Real Estate Broker:



John Greg Turcotte, CCIM  
210.710.8966  
jg@turcottes.com





Developer:



Rail Operator:



Real Estate Broker:



John Greg Turcotte, CCIM  
210.710.8966  
[jg@turcottes.com](mailto:jg@turcottes.com)



 **ALAMO**  
JUNCTION  
RAIL★PARK