

# HRI

HARTWELL REALTY  
INCORPORATED

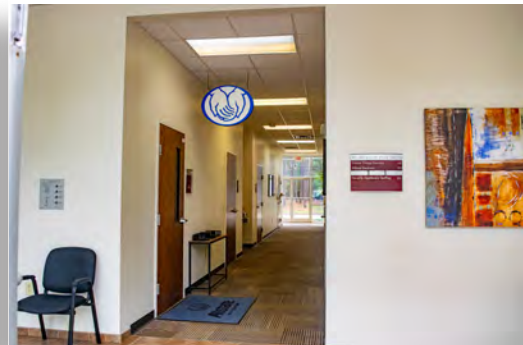
## FOR LEASE

951 Heather Park Dr  
Garner, NC 27529



## OFFICE OPPORTUNITY

CENTRALLY LOCATED IN GARNER WITH EXCELLENT VISIBILITY



HRI

HARTWELL REALTY  
INCORPORATED

**Megan Pumarejo**  
The Compton Team at  
HARTWELL REALTY, INC.

512-230-5193 Direct  
919-772-0170 x6 Office  
[www.hartwellrealty.net](http://www.hartwellrealty.net)



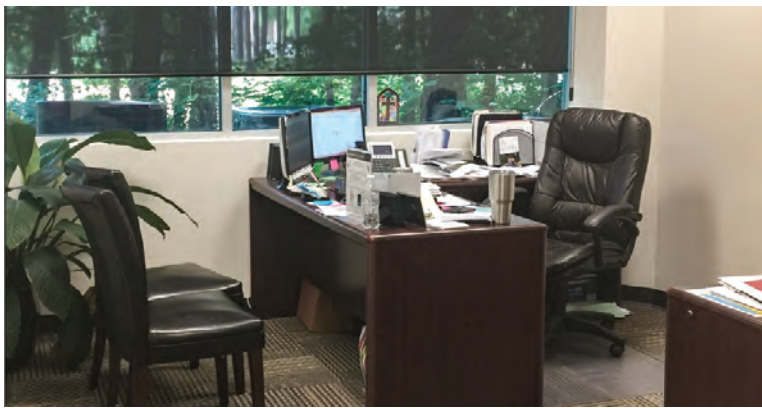
# PROPERTY FEATURES

951 Heather Park Dr. | Garner, NC 27529

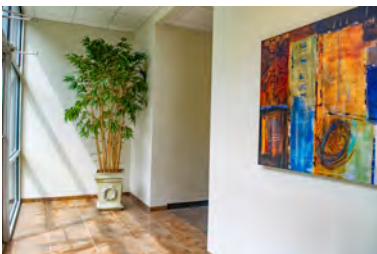
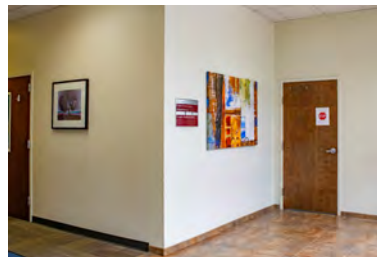
## SPACE FEATURES

- GROUND FLOOR
- 6 OFFICES, RECEPTION, CONFERENCE ROOM,
- BREAKROOM, 4 OFFICES WITH WINDOWS
- ZONED O&I
- MONUMENTS SIGNAGE
- GREAT LOCATION FOR ATTORNEY, DOCTOR OR
- ANY OTHER PROFESSIONAL OFFICE

OFFICE FOR LEASE	2753 SF +/-
YEAR BUILT	2008
BUILDING SIZE	8900 SF
ZONING	NMX
PIN ID#	1710369629



## PHOTOS



The information contained herein has been obtained from sources deemed reliable; however, Hartwell Realty, Inc. makes no guarantees, representations or warranties, as to the completeness or accuracy thereof. The presentation of this property is submitted subject to errors, omission and changes of price or conditions prior to sale or lease of the property. The property is subject to withdrawal without notice. It is the responsibility of the prospective Buyer(s), Tenant(s) or Investor(s) to verify the information contained herein.