

Industrial For Lease

Contact:

James Yeates

Vice President
+1 801 995 0049
james.yeates@colliers.com

Justin Irvine

Vice President
+1 801 400 4260
justin.irvine@colliers.com

Colliers

2100 Pleasant Grove Blvd., Suite 200
Pleasant Grove, UT 84062
Main: +1 801 947 8300
colliers.com

Orem West Flex/Industrial

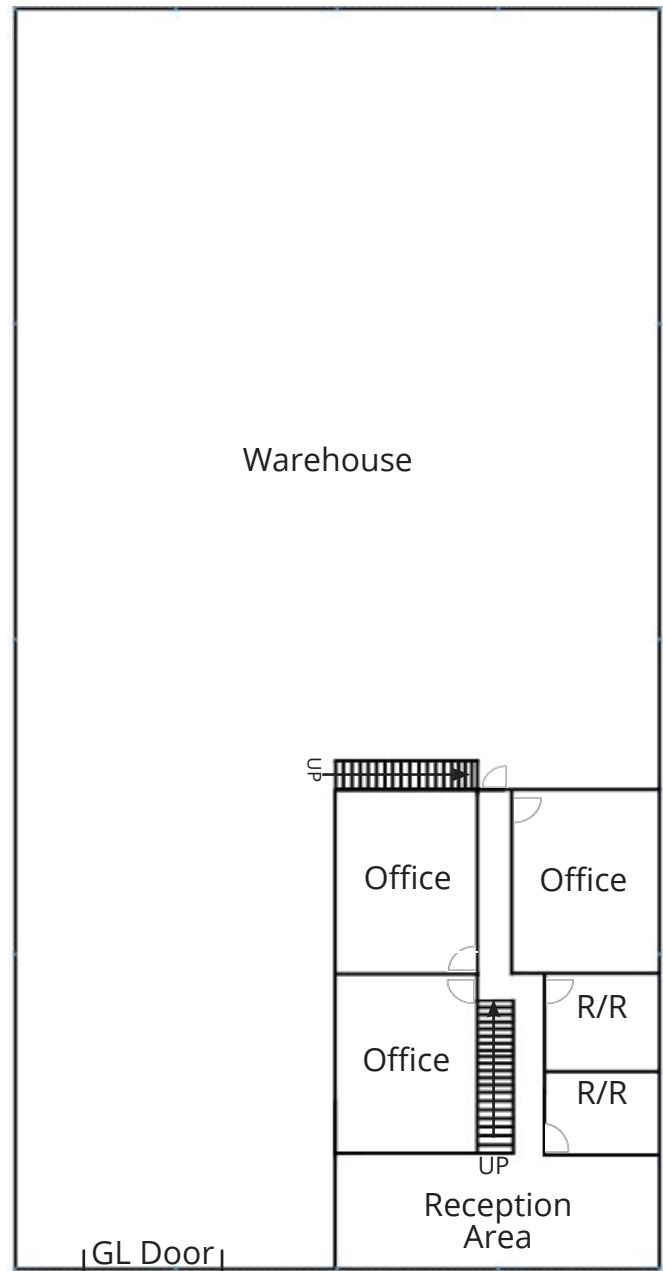
1128 South 1680 West
Orem, UT

Property Information

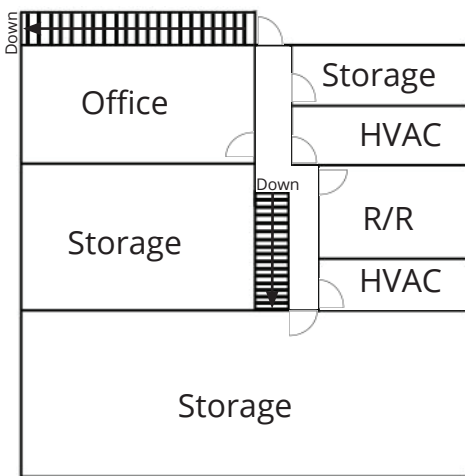
- 7,600 SF Total
Office: 2,200 SF
Warehouse: 5,400 SF
- 12'x14' GL door
- Multiple offices
- 3 Restrooms
- Reception area
- Ample parking
- Convenient location with easy access to the I-15/
University Parkway Interchange
- Available August 1, 2024
- Lease rate: \$1.00/SF NNN

Floor Plan

Main Level

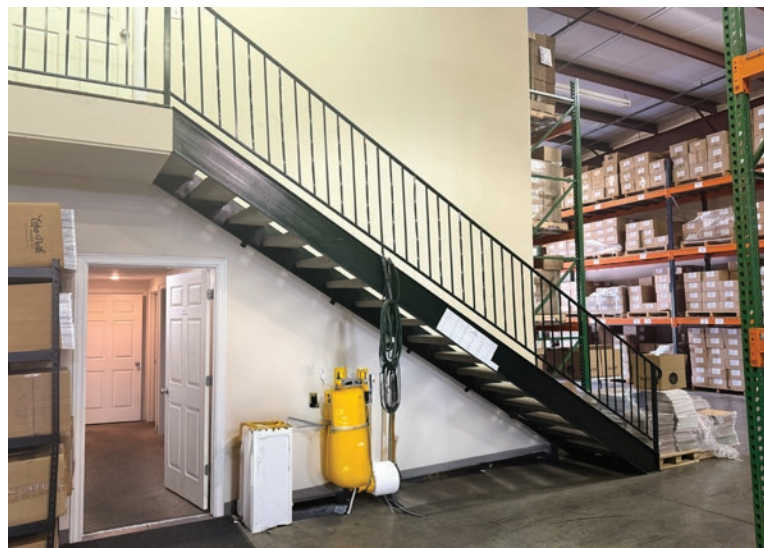


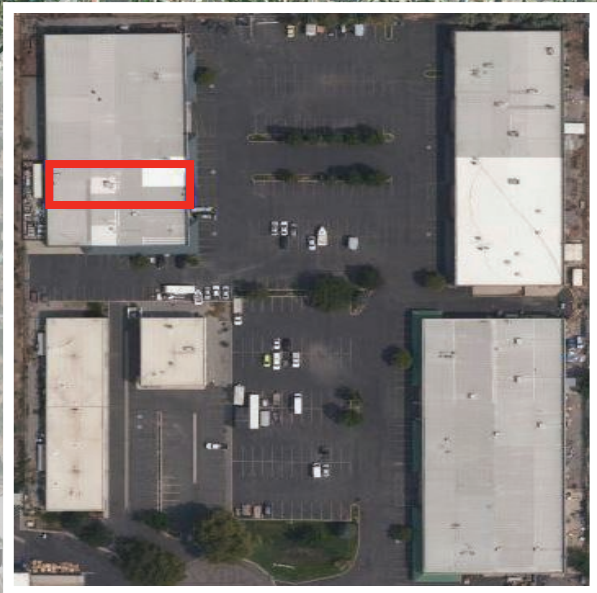
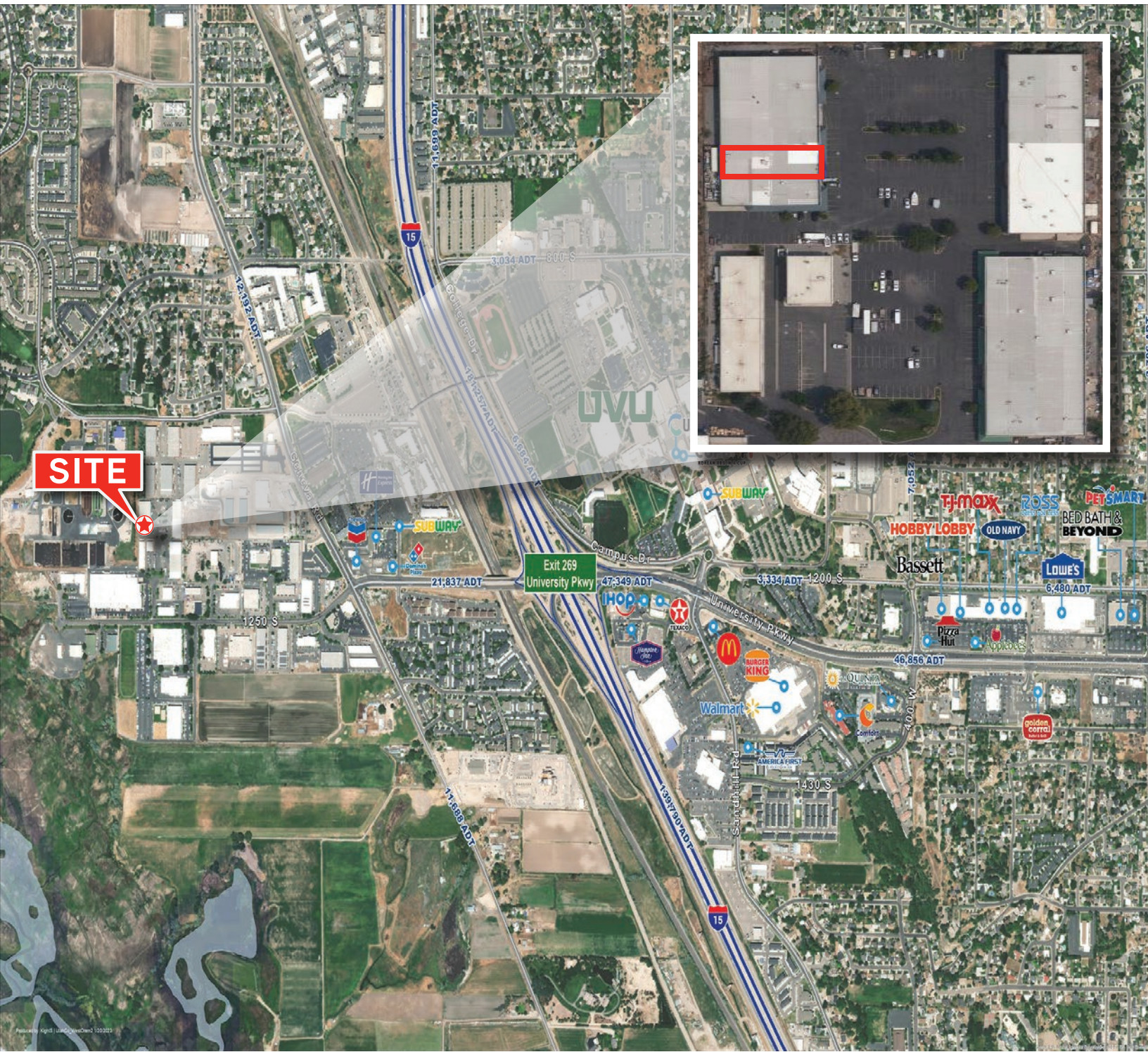
Upper Level



1128 S 1680 W | For Lease

Property Gallery





Colliers
 2100 Pleasant Grove Blvd., Suite 200
 Pleasant Grove, UT 84062
 Main: +1 801 947 8300
 colliers.com

James Yeates
 Vice President
 +1 801 995 0049
 james.yeates@colliers.com

Justin Irvine
 Vice President
 +1 801 400 4260
 justin.irvine@colliers.com

This document has been prepared by Colliers International for advertising and general information only. Colliers International makes no guarantees, representations or warranties of any kind, expressed or implied, regarding the information including, but not limited to, warranties of content, accuracy and reliability. Any interested party should undertake their own inquiries as to the accuracy of the information. Colliers International excludes unequivocally all inferred or implied terms, conditions and warranties arising out of this document and excludes all liability for loss and damages arising therefrom. This publication is the copyrighted property of Colliers International and/or its licensor(s). ©2024. All rights reserved.