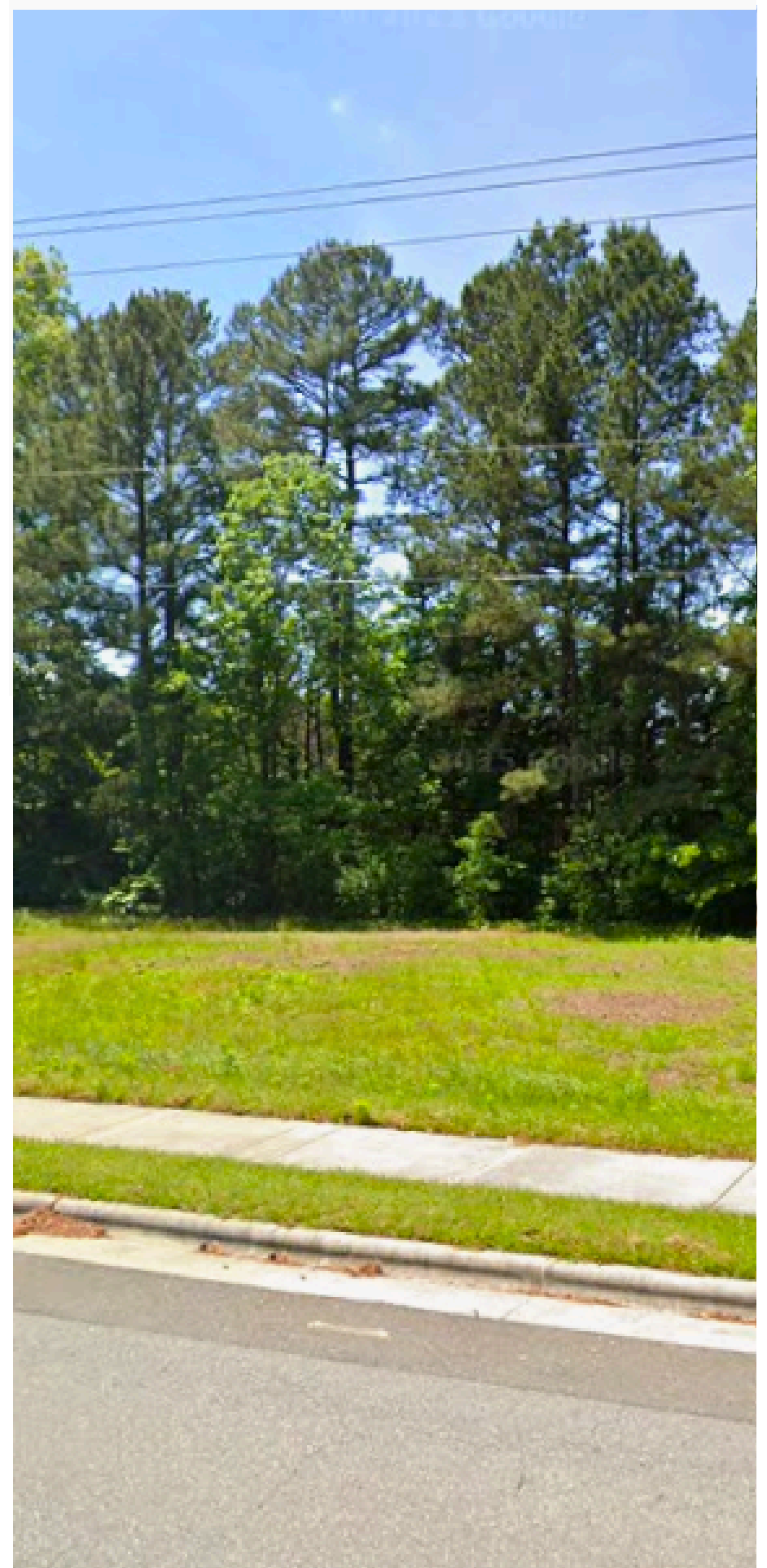


JUST LISTED

PROPERTY FOR SALE



611 & 703 CHURCH STREET MORRISVILLE, CARY NC 27560



PROPERTY DETAILS

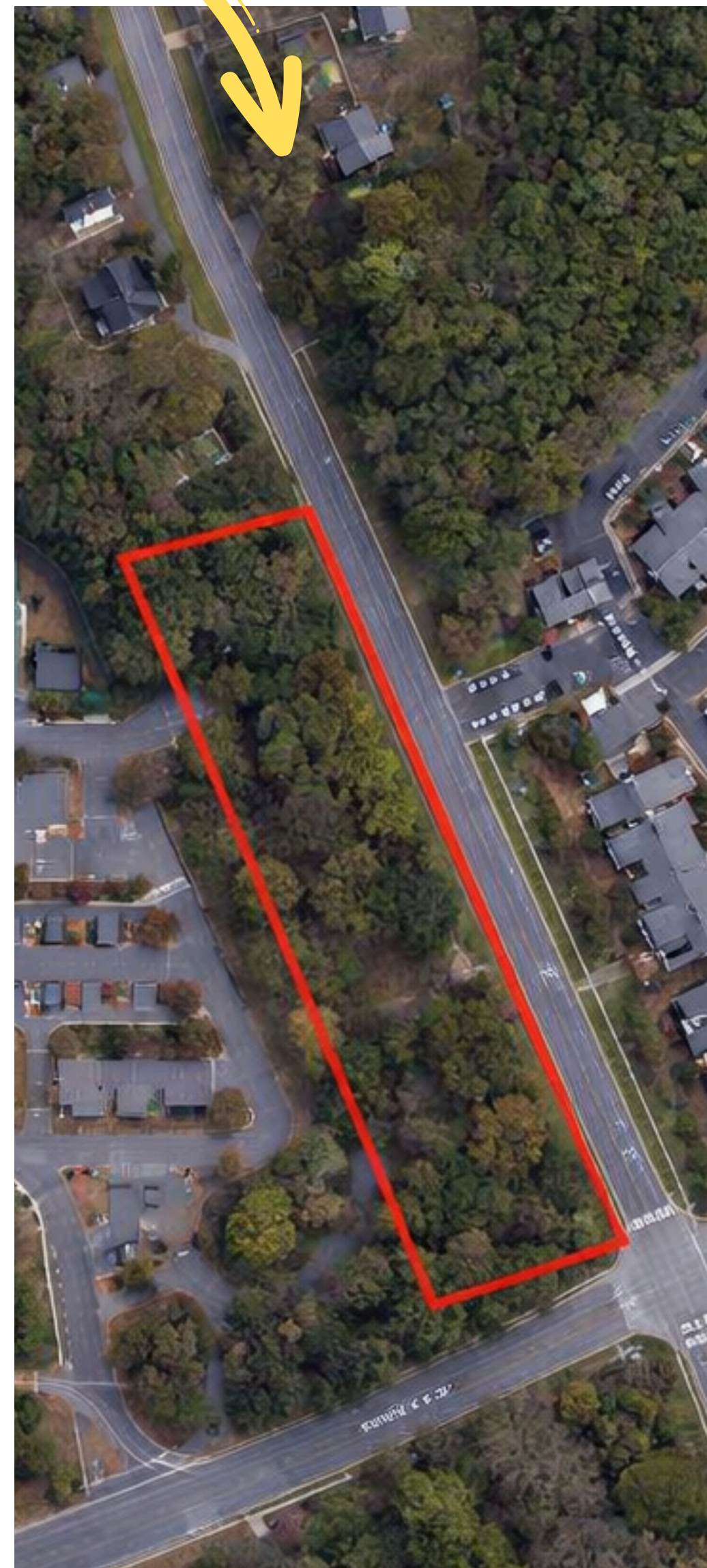
- Property Size: **1.09 Acres**
- Property Type: **Land**
- Proposed Use: **Commercial**
- Cross Streets: **Treybrooke Dr**

PRICE
\$1,190,000

GENERAL INFORMATION

 **611 & 703 CHURCH STREET MORRISVILLE, CARY NC 27560**

AERIAL VIEW



INVESTMENTS HIGHLIGHTS

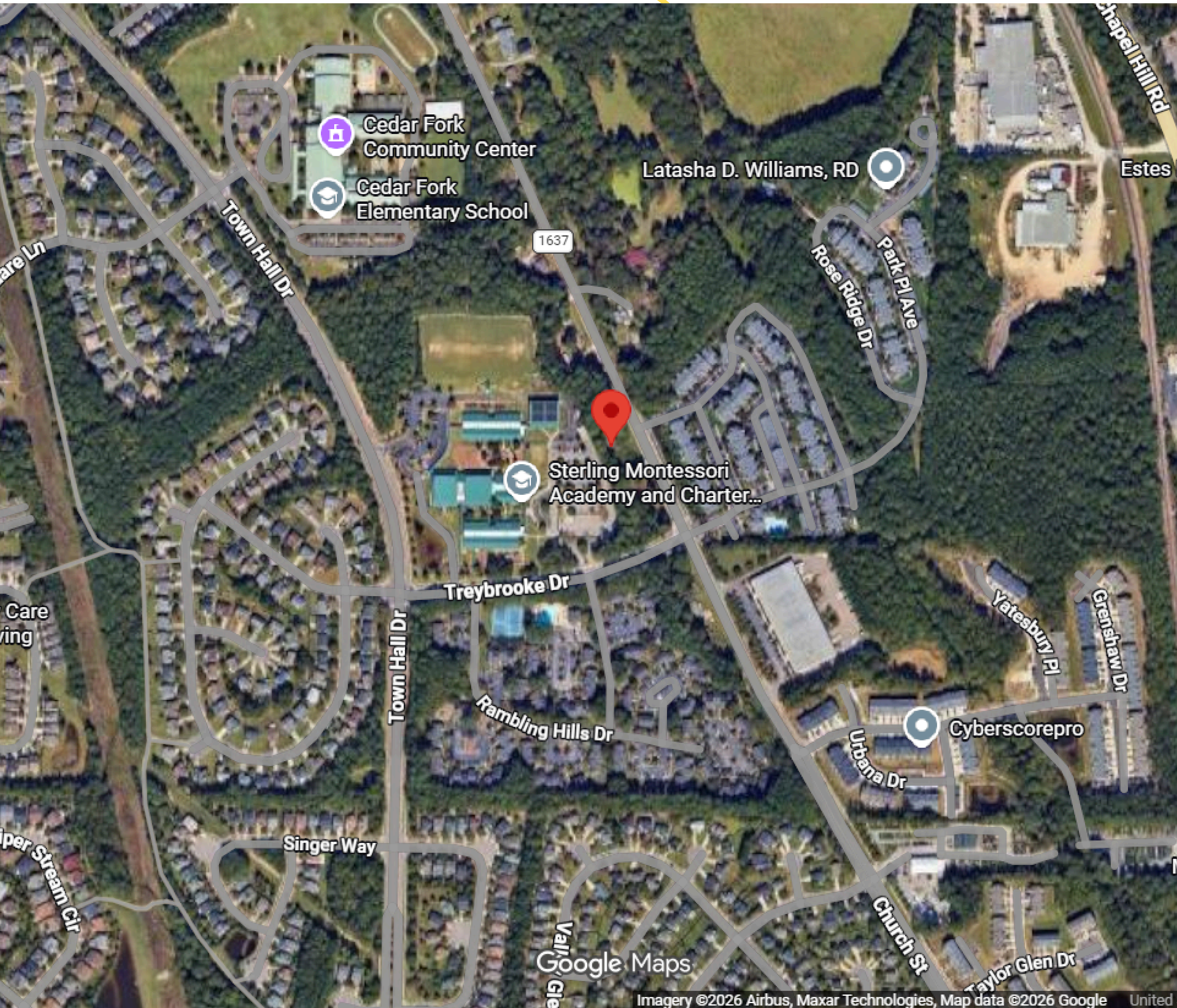
- **CHILDCARE FACILITY APPROVAL:** SITE IS APPROVED FOR A LICENSED CHILDCARE FACILITY IN NORTH CAROLINA, SUPPORTING PREMIUM PROGRAMMING, STRONG DEMAND, AND ATTRACTIVE TUITION POTENTIAL.ROWTH.
- **HIGH-GROWTH SUBMARKET:** LOCATED IN MORRISVILLE, ONE OF WAKE COUNTY'S FASTEST-GROWING, FAMILY-ORIENTED COMMUNITIES WITH SUSTAINED POPULATION AND HOUSING GROWTH.

GENERAL INFORMATION



611 & 703 CHURCH STREET MORRISVILLE, CARY NC 27519

LAND LOCATION



Imagery ©2026 Airbus, Maxar Technologies, Map data ©2026 Google United

GENERAL INFORMATION



611 & 703 CHURCH STREET MORRISVILLE, CARY NC 27519

STATISTICS

Metric	1-Mile Radius	3-Mile Radius	5-Mile Radius
Total Population	14,800	74,500	170,200
Total Households	5,900	29,400	66,100
Average Household Size	2.5	2.6	2.6
Households with Children	34%	36%	35%
Median Household Income	~\$112,000	~\$118,000	~\$109,000
Bachelor's Degree or Higher	62%	65%	60%
Daytime Population	Strong	Very Strong	Regional Employment Base
Public & Private Schools	6+	18+	30+
Major Employment Nodes	RTP	RTP / Cary	RTP / Raleigh / Durham