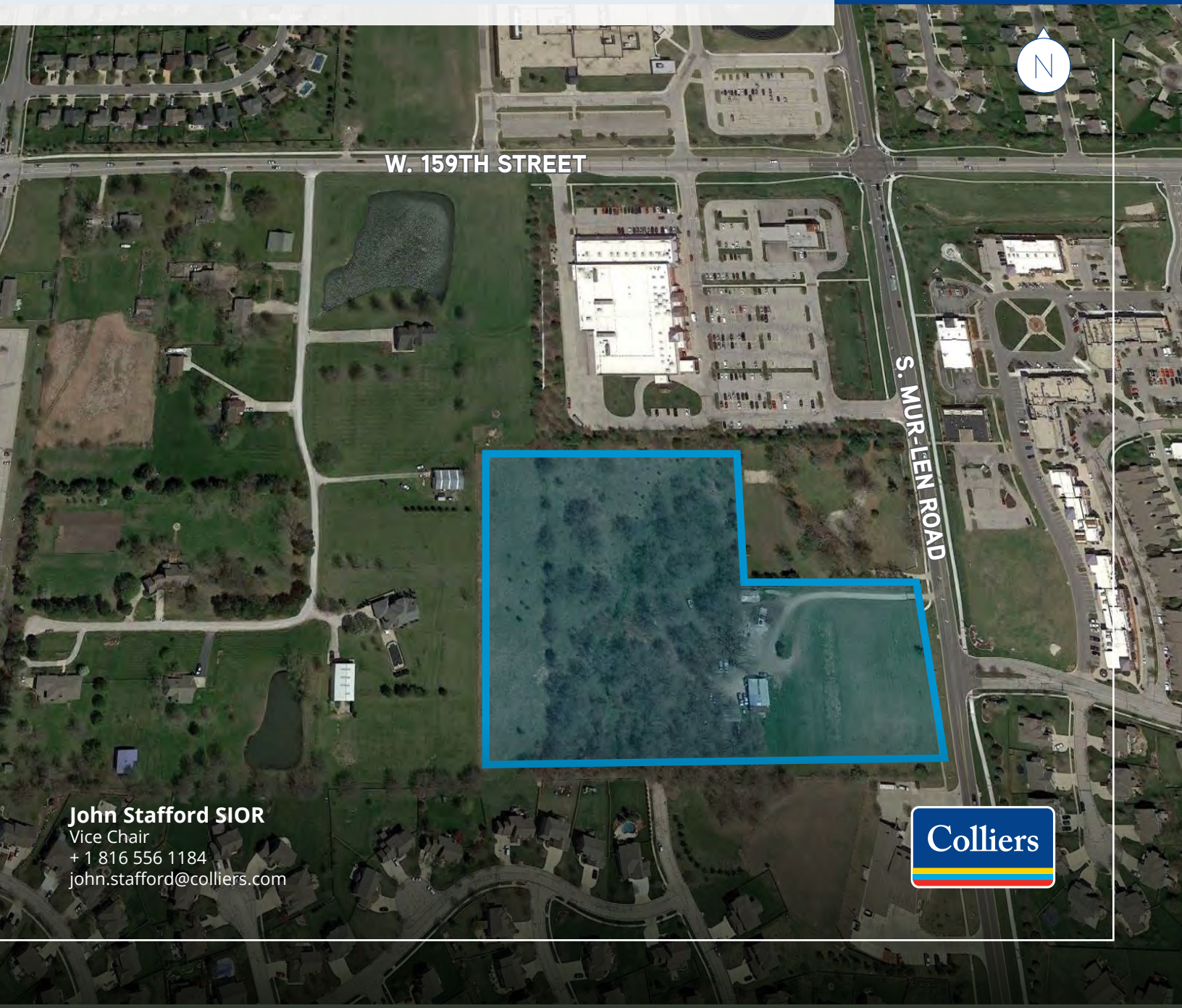


Land for Sale

11.7± Acres

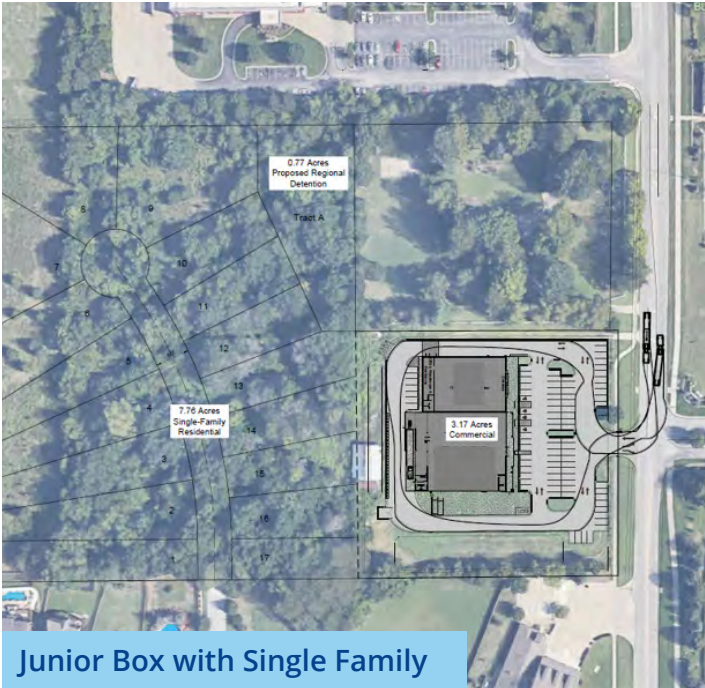
159th Street & Mur-Len Road
Olathe, Kansas



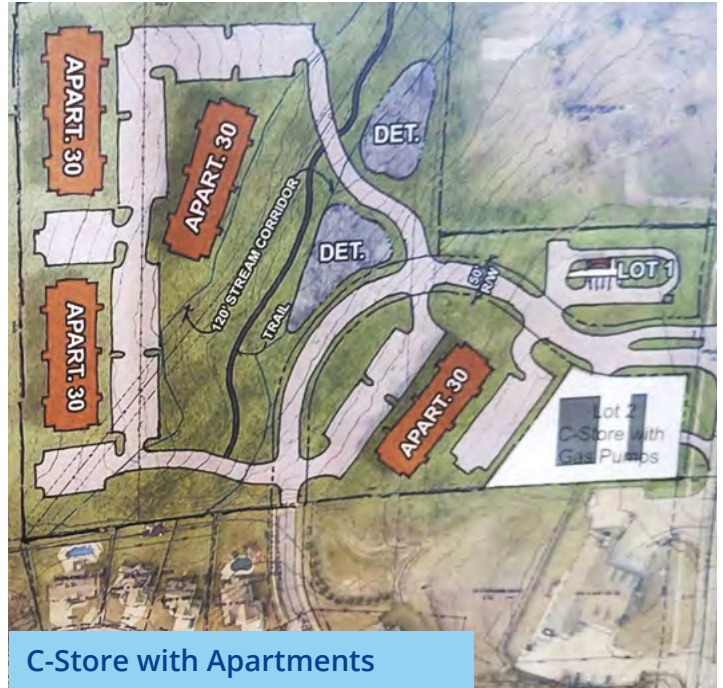
John Stafford SIOR
Vice Chair
+ 1 816 556 1184
john.stafford@colliers.com



Concept Plans



Junior Box with Single Family



C-Store with Apartments



Townhomes



Multifamily

Property Profile

- > 11.7± acres available (divisible)
 - > Divisible to 3± acres (pad site fronting Mur-Len Road)
- > Excellent site for multifamily/senior living development and/or retail
- > Adjacent to Price Chopper anchored center
- > Zoned RUD and RLD
- > Taxes: \$4,840.82
- > Sale Price: \$1,900,000 (\$3.73/SF)
- > Demographics:
 - > Average household income: \$108,689 in 5-mile radius
 - > Population: 135,790 in a 5-mile radius
 - > Vehicles per day: 9,622 at 159th Street & Mur-Len Road

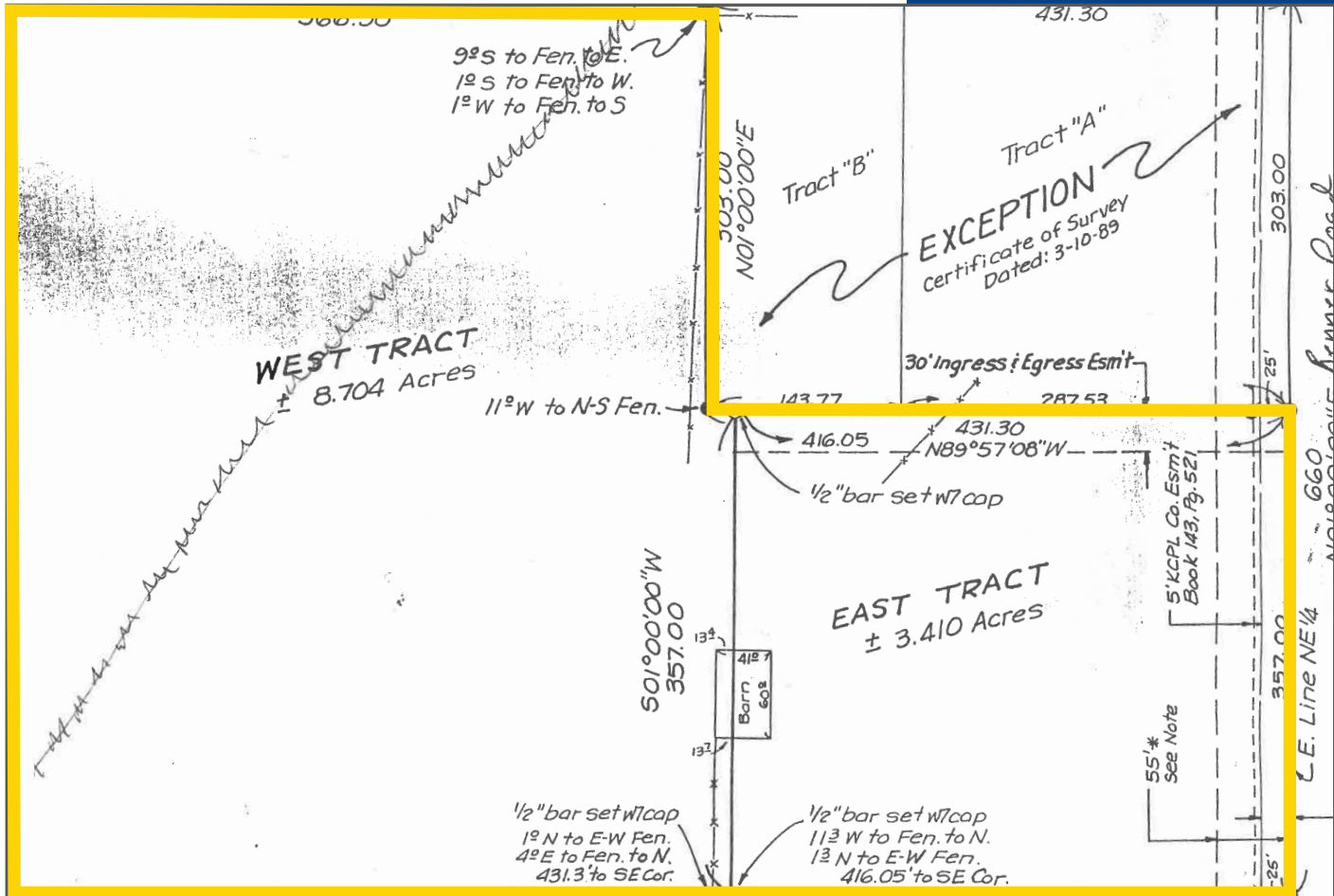


John Stafford SIOR
 Vice Chair
 + 1 816 556 1184
 john.stafford@colliers.com

Colliers Kansas City
 4520 Main Street, Suite 1000
 Kansas City, Missouri
 colliers.com/kansascity

159th Street & Mur-Len Road | For Sale

Land Survey



This document has been prepared by Colliers for advertising and general information only. Colliers makes no guarantees, representations or warranties of any kind, expressed or implied, regarding the information including, but not limited to, warranties of content, accuracy and reliability. Any interested party should undertake their own inquiries as to the accuracy of the information. Colliers excludes unequivocally all inferred or implied terms, conditions and warranties arising out of this document and excludes all liability for loss and damages arising there from. This publication is the copyrighted property of Colliers and /or its licensor(s). © 2023. All rights reserved. This communication is not intended to cause or induce breach of an existing listing agreement.