

222 E. Elm Street

Caldwell, Id 83605

For Lease

Suite	RSF	\$/Mo.
Ground Floor	5,117	\$5,900.00
Lower Level	2,335	\$1,200.00
Total	7,452	\$7,100.00

Tenant to pay for all utilities & NNN

Features

- Former out patient medical services and medical offices use.
- Lower level has separate entrance.
- Lit Signage
- Ample parking
- Zoned– Medical office
- .72 acres
- Across street from West Valley Therapy Services & Saint Alphonsus Family Medicine



Contact:

Tim Graver CCIM, CPM

Phone: 208-322-4900
Cell: 208-850-1440
Email: tim@primeidaho.com



1406 N Main Street, Suite 215
Meridian, ID 83642
208-322-4900
www.primeidaho.com

Information is deemed reliable, but is not guaranteed and may be changed.

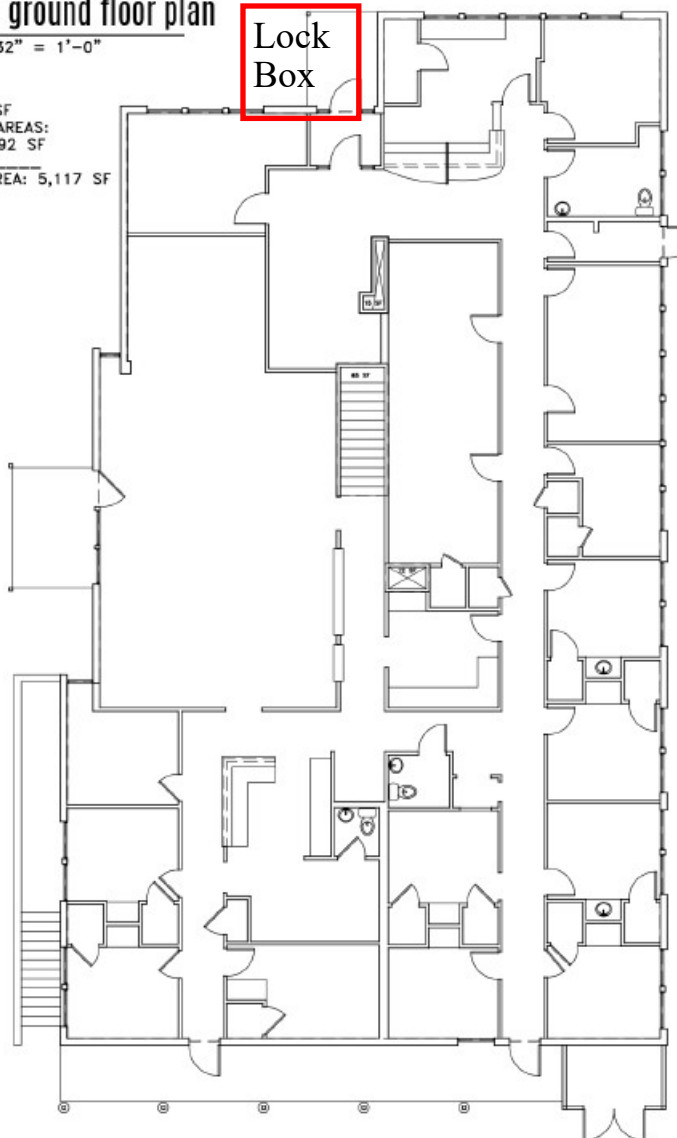
MER/Available/1406 N. Main Summary.PUB

222 elm ground floor plan

SCALE: 3/32" = 1'-0"

FOOTPRINT: 5,209 SF
VERTICAL SERVICE AREAS:
12 + 15 + 65 = 92 SF

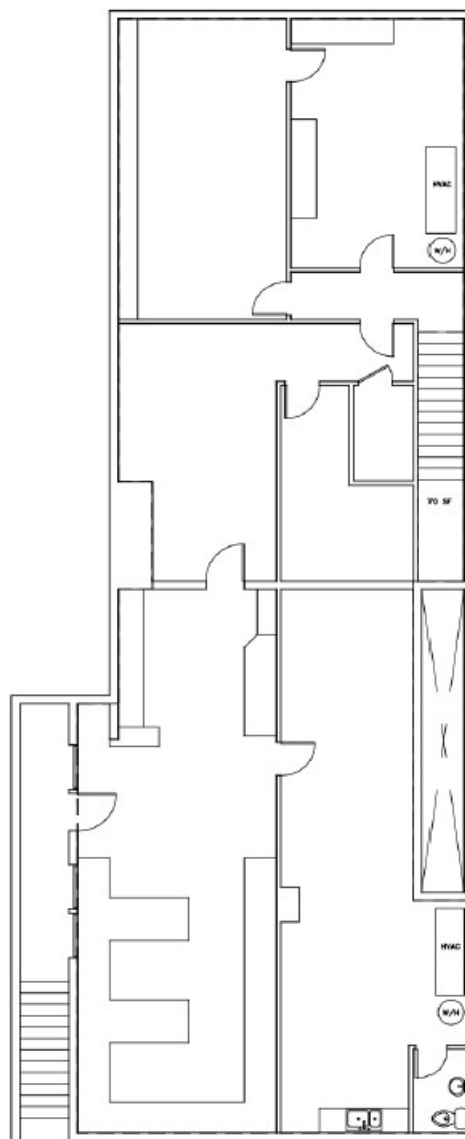
TOTAL RENTABLE AREA: 5,117 SF



222 elm basement plan

SCALE: 3/32" = 1'-0"

FOOTPRINT: 2,405 SF
VERTICAL SERVICE AREA: 70 SF
TOTAL RENTABLE AREA: 2,335 SF





Prime

Commercial
Real Estate

