

**OFFICE SUBLEASE AVAILABLE**

# **5 CENTENNIAL DRIVE**

Peabody, Massachusetts

CONVENIENTLY LOCATED OFFICE SPACE

**3,000 SF Available**



# 5 CENTENNIAL DRIVE

Peabody, Massachusetts

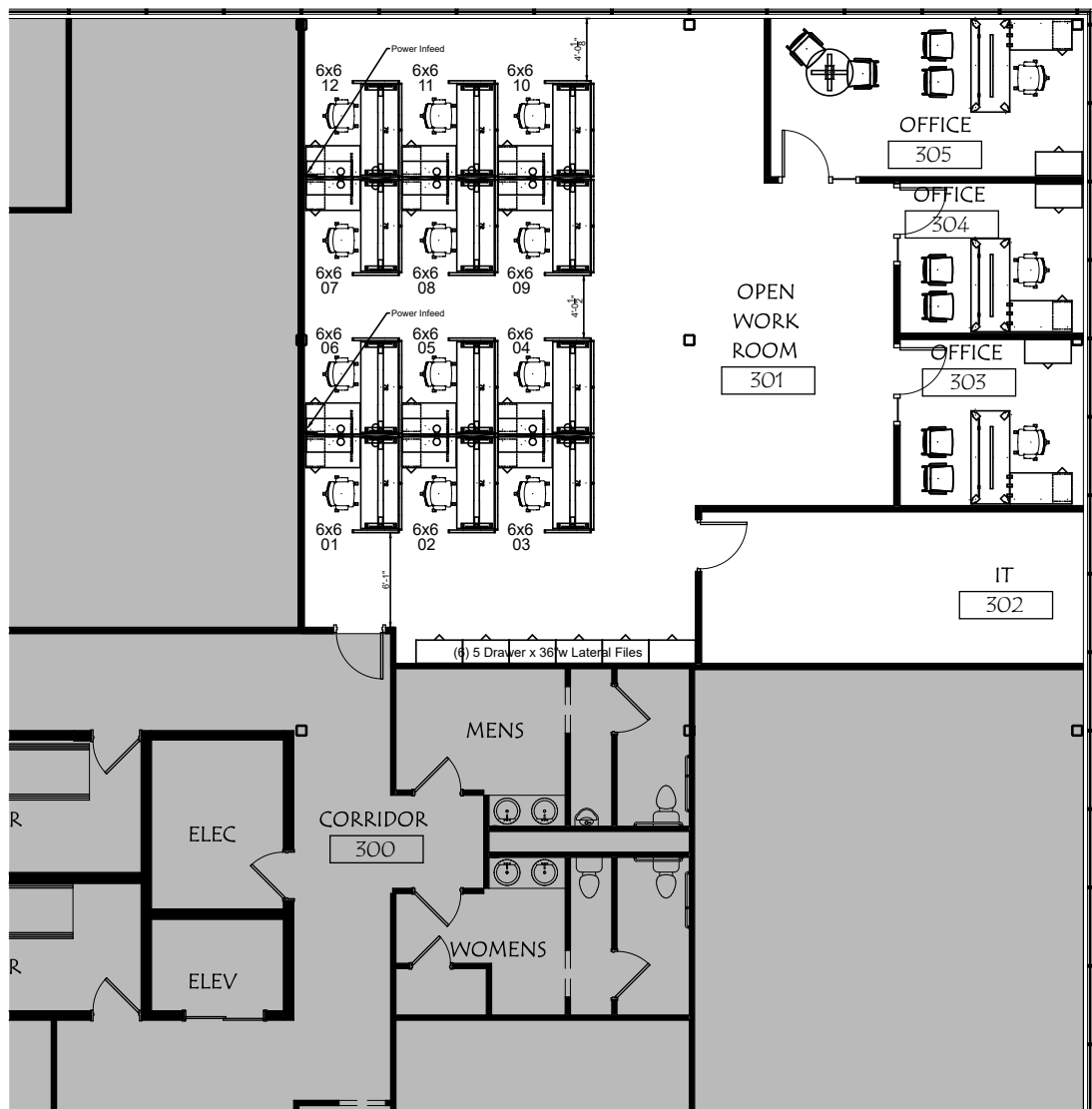
## SUBLEASE PREMISES SPECIFICATIONS

AVAILABLE SF:	Third Floor: 3,000 SF
TERM:	Through April 30th 2037
USE:	Office
PARKING:	4.11/1,000 SF
FURNITURE:	Fully Furnished

## BUILDING SPECIFICATIONS

BUILDING SIZE:	38,400 SF
YEAR BUILT:	1989
AVERAGE FLOOR:	9,600 SF
CLASS:	B
AMENITIES:	Full service cafeteria in the park, multiple restaurants nearby, Lifetime fitness located +/- 3 miles away.

## THIRD FLOOR | 3,000 SF





### LIBERTY TREE MALL

NORDSTROM  
**rack**

**KOHL'S**



**Total Wine & MORE**



**TARGET**

**TRADER JOE'S**

### NORTHSHORE MALL

NORDSTROM

**The Cheesecake Factory**

★ **macy's**



SEPHORA

**COFFEE NERO**



**JCPenney**



### 5 CENTENNIAL DRIVE



← MARKET STREET, LYNNFIELD (<5 MILES)



**Downtown Boston**  
18.5 mi



**Logan Airport**  
15.9 mi



**Route 1**  
1.8 mi



**I-95**  
<0.5 mi

OFFICE SUBLEASE AVAILABLE

# 5 CENTENNIAL DRIVE

Peabody, Massachusetts



## CONTACT US TO ARRANGE A TOUR

### CHRIS CURLEY

Executive Vice President

617.457.3211

ccurley@hunnemanre.com

### MIKE ALLEN

Senior Vice President

617.457.3276

mallen@hunnemanre.com



303 Congress Street, Boston, MA 02210 617.457.3400 [www.hunnemanre.com](http://www.hunnemanre.com)

©2025 Hunneman. All rights reserved. All information has been obtained from sources believed reliable but no warranty or representation is verified for accuracy or completeness. Caution and independent investigation of property and information should be verified. Reliance on this information is at your own risk.