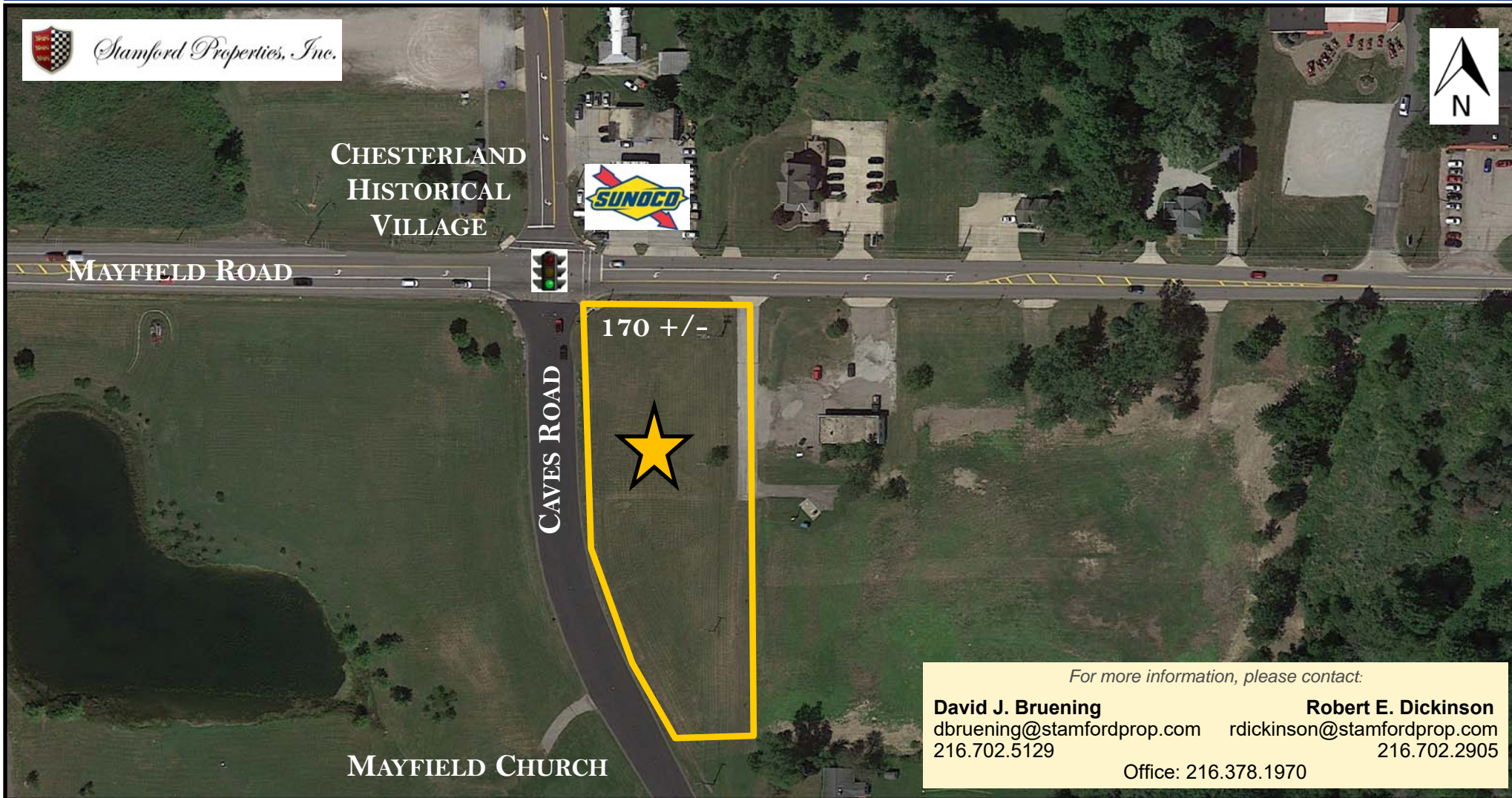


AVAILABLE—GATEWAY TO GEAUGA COUNTY

1.4 +/- ACRES

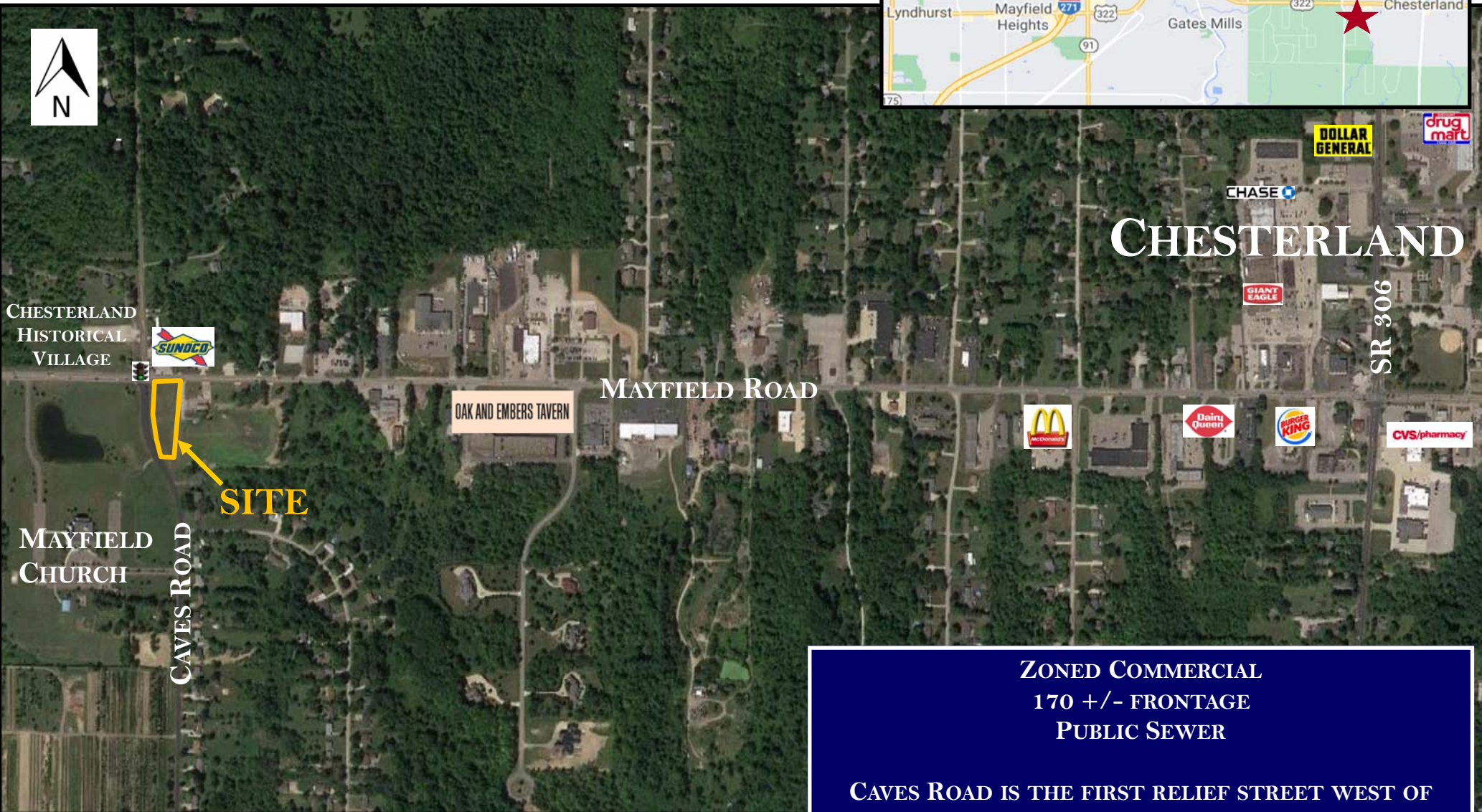
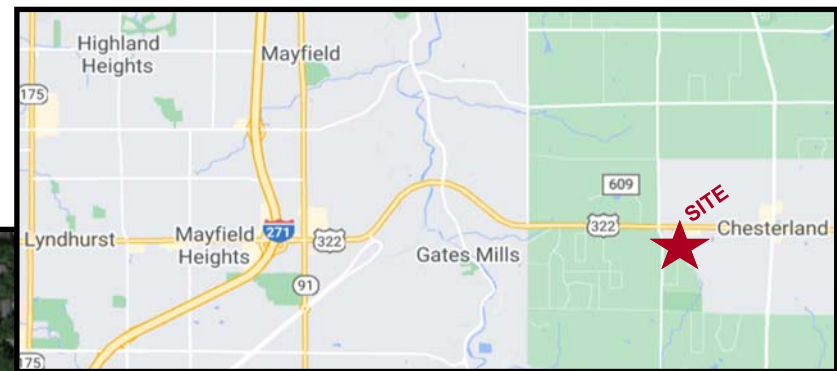
SIGNALIZED CORNER OF ROUTE 322 & CAVES ROAD (SEQ)
CHESTERLAND, OHIO



The above information has been secured from sources believed reliable. We do not doubt its accuracy, however we have not verified it and make no guarantee regarding it. It is your responsibility to substantiate its exactness.

CHESERLAND, OHIO

ROUTE 322 & CAVES ROAD (SWQ)



ZONED COMMERCIAL
170 +/- FRONTAGE
PUBLIC SEWER

**CAVES ROAD IS THE FIRST RELIEF STREET WEST OF
ROUTE 306 AND A MAJOR COMMUTER ACCESS ROAD**

13,370 ADT—RT. 322/MAYFIELD RD (2013)
7,442 ADT—CAVES RD (SOUTH, 2012)
5,091 ADT—CAVES RD (NORTH, 2012)



Stamford Properties, Inc.