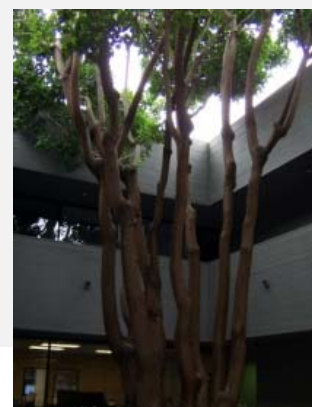




OFFICE SPACE FOR LEASE

Eucalyptus Square

9815 Carroll Canyon Road, San Diego, CA 92131



914 USF to 1,506 USF Office Suites Available

Property Highlights

- 15,292 Usable Square Feet
- 2-Story Office Building
- I-15 Corridor | Scripps Ranch
- 4 Parking Spaces per 1,000 USF
- Adjacent to Restaurants & Retail Amenities
- LEASE RATE OPTIONS:
 - \$1.65 / USF / Month Plus Electricity (Separately Metered)
 - \$1.85 / USF / Month Full Service (Non-Metered)
- 3 Office Suites Available



For more information please contact:

Jim Laing
Senior Director

619.525.2909
Jim.Laing@cushwake.com

110 West A Street, Suite 1000
San Diego, CA 92101

Cushman & Wakefield Copyright 2016. No warranty or representation, express or implied, is made to the accuracy or completeness of the information contained herein, and same is submitted subject to errors, omissions, change of price, rental or other conditions, withdrawal without notice, and to any special listing conditions imposed by the property owner(s). As applicable, we make no representation as to the condition of the property (or properties) in question.



Eucalyptus Square

9815 Carroll Canyon Road, San Diego, CA 92131

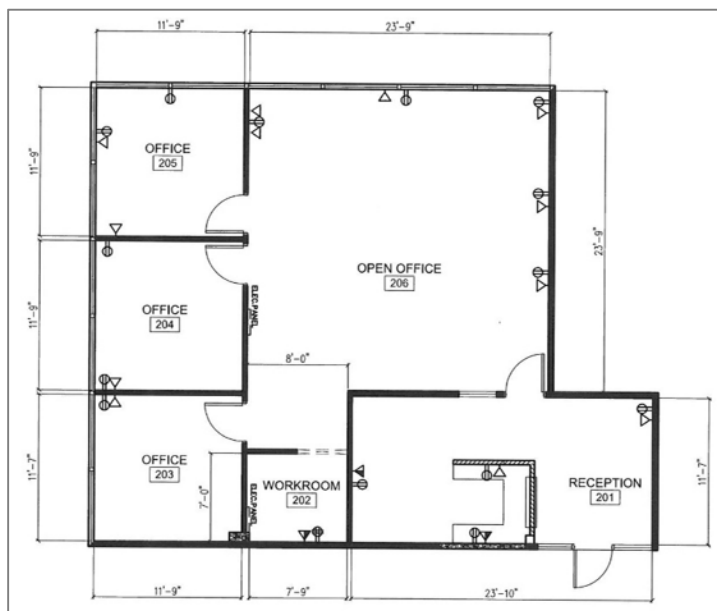
Reception / 4 Offices / Phone-Server-Storage Room



2 Offices / Open Office Area / Convenience “Coffee Bar”



Reception / 3 Offices / Open Office Area / Workroom-Storage



For more information please contact:

Jim Laing
Senior Director

619.525.2909
Jim.Laing@cushwake.com

110 West A Street, Suite 1000
San Diego, CA 92101