

FOR LEASE

Approximate 3,249 Sq. Ft.
Industrial / R&D Suite



2284 GLASSELL STREET, SUITES G, ORANGE, CALIFORNIA

Building Features:

- High Image Project
- Professional Business Park Environment
- Glassell Street Frontage
- Approximately 2,054 Sq. Ft. of Deluxe HVAC Office
- 200 Amp, 120/208 Volt Electrical Service (verify)
- One (1) Ground Level Loading Door
- 16' Minimum Warehouse Clearance
- 3:1 Parking Ratio (10 Parking Stalls)
- M-2 Zoning
- Excellent Access to 57, 91, 5 and 22 Freeways



For Further Information, Please Contact:

Shawn Kelter

Principal

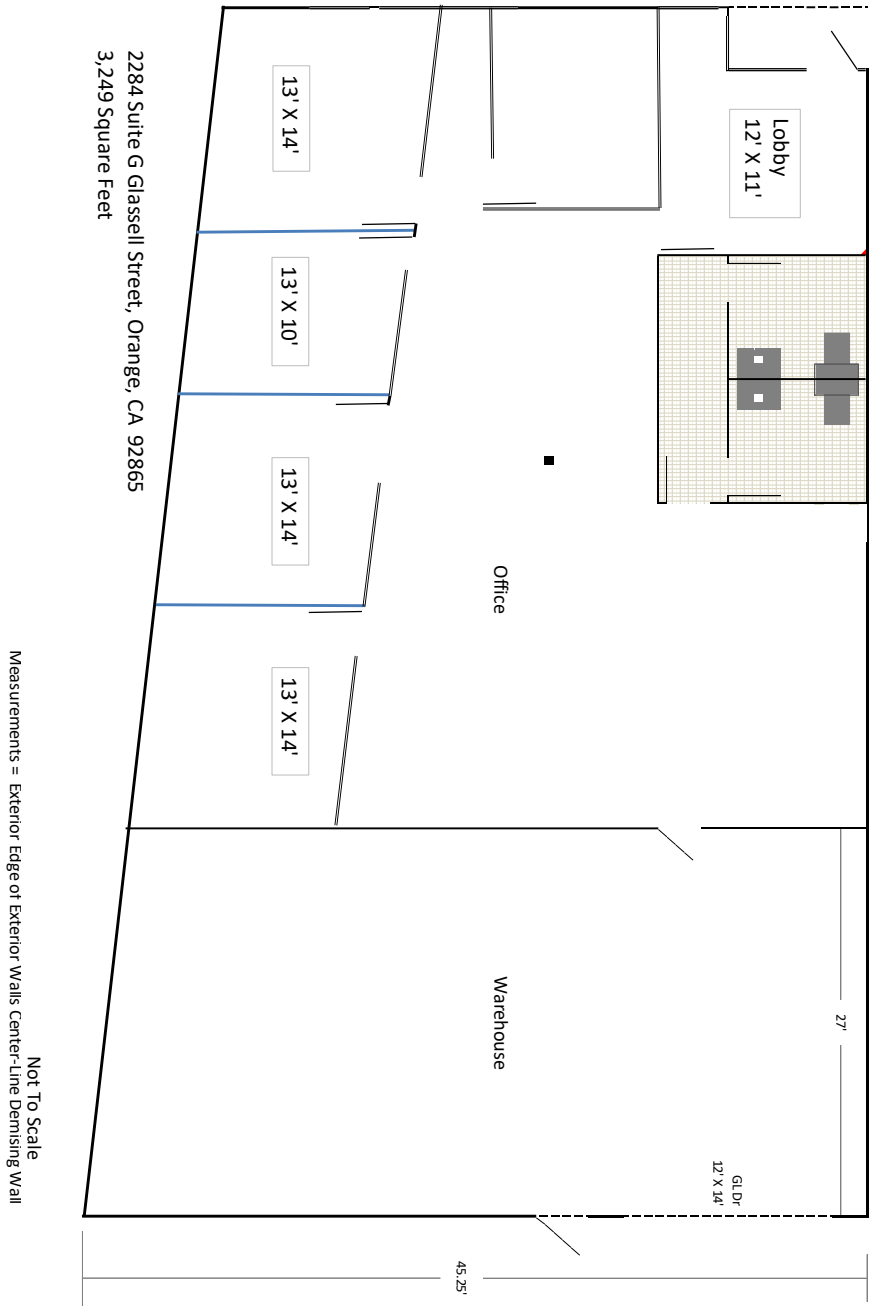
714.343.3556

shawnkelter@Insight-Property.com

INSIGHT

Commercial Property Advisory

Baywood Business Center, Orange, CA



2238 Suite G Glassell Street, Orange, CA 92865

For Further Information, Please Contact:

Shawn Kelter

Principal

714.343.3556

shawnkelter@Insight-Property.com

INSIGHT

Commercial Property Advisory