

169 PARKSHORE DRIVE Folsom

FOR LEASE
±1,608 RSF

Ready for immediate
move in

Stand Alone Building

Direct Suite Entry

Open Floor Plan

NEWMARK



Matt Heacox

t 916-569-2314 matt.heacox@nrmk.com
CA RE License #01451720

Jason Brinitzer

t 916-569-2341 jason.brinitzer@nrmk.com
CA RE License #00832933

LOCATION, LOCATION, LOCATION



169 PARKSHORE DRIVE
±1,608 RSF

Hawkins
School of
Performing
Arts

Lake Forest
Tech Center

The Offices
at Parkshore

Business
Central
Folsom

Woodmere
Pointe
Offices

Lake Forest
Tech Center

- New Roof
- Newly Painted
- Across from the RT Light Rail Station
- Walking Distance to Retail, Childcare, Restaurants & Recreational Amenities
- Minutes from the Highway 50 Interchange
- Zoned for Office or Medical Use

NEWMARK

LOCATION, LOCATION, LOCATION



NEWMARK

NEARBY AMENITIES



RETAIL

A. FOLSOM & IRON POINT

Century Folsom 14
Chili's Grill & Bar
Andy's Kitchen
Taco Exxpress
Burger King
Reliance SuperMart
Bakery Bites

B. FOLSOM PREMIUM OUTLET

Calvin Klein
Chico's
Coach Outlet
Eddie Bauer Outlet
GAP Factory
Levi's Outlet
Michael Kors
Nike Factory Store
Samsonite

C. WALMART CENTER

Walmart
Chevron

D. FOLSOM GATEWAY

Ulta Beauty
DSW Shoe Warehouse
REI
Staples
Best Buy
Sam's Club

E. IRON POINT & E. BIDWELL

Green Acres Nursery
Costco
Mikuni
In-N-Out Burger
Quick Quack Car Wash

F. HISTORICAL FOLSOM

Folsom History Museum
Folsom Historic District
Farmers Market
Powerhouse State Historic Park
Lake Natoma Inn

G. PALLADIO & BROAD-STONE PLAZA

CVS
Barnes & Noble
Buckhorn BBQ
Chicago Fire Pizza
H & M
Kirkland's
Nordstrom Rack
Palladio Lux Cinema
Panera
Whole foods

H. FOLSOM SQUARE

Kohl's
Target
Trader Joe's
HomeGoods
La Fiesta Alteña
Taqueria/Folsom

I. INTEL

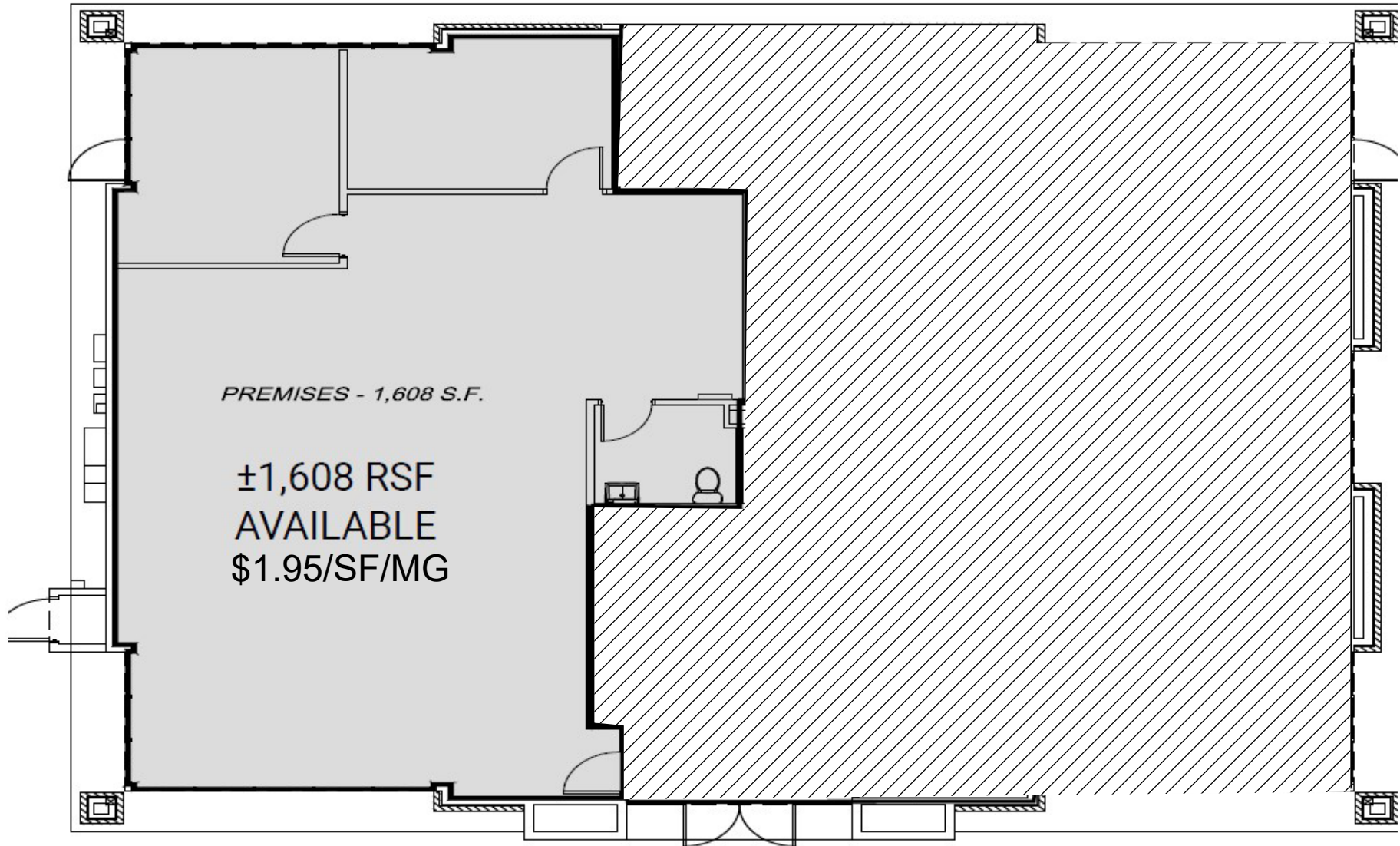
SCHOOL

A. VISTA DEL LAGO HIGH SCHOOL
B. FOLSOM LAKE COLLEGE
C. FOLSOM HIGH SCHOOL
D. FOLSOM MIDDLE SCHOOL

HOSPITAL

A. MERCY HOSPITAL OF FOLSOM

FLOOR PLAN - 169 PARKSHORE DRIVE



NEWMARK

FOR LEASE:

169 PARKSHORE DRIVE

Folsom



MATT HEACOX

t 916-569-2314

MATT.HEACOX@nmrk.com

CA RE License #01451720

JASON BRINITZER

t 916-569-2341

jason.brinitzer@nmrk.com

CA RE License #02114854

NEWMARK

The distributor of this communication is performing acts for which a real estate license is required. The information contained herein has been obtained from sources deemed reliable but has not been verified and no guarantee, warranty or representation, either express or implied, is made with respect to such information. Terms of sale or lease and availability are subject to change or withdrawal without notice. • 12/2025