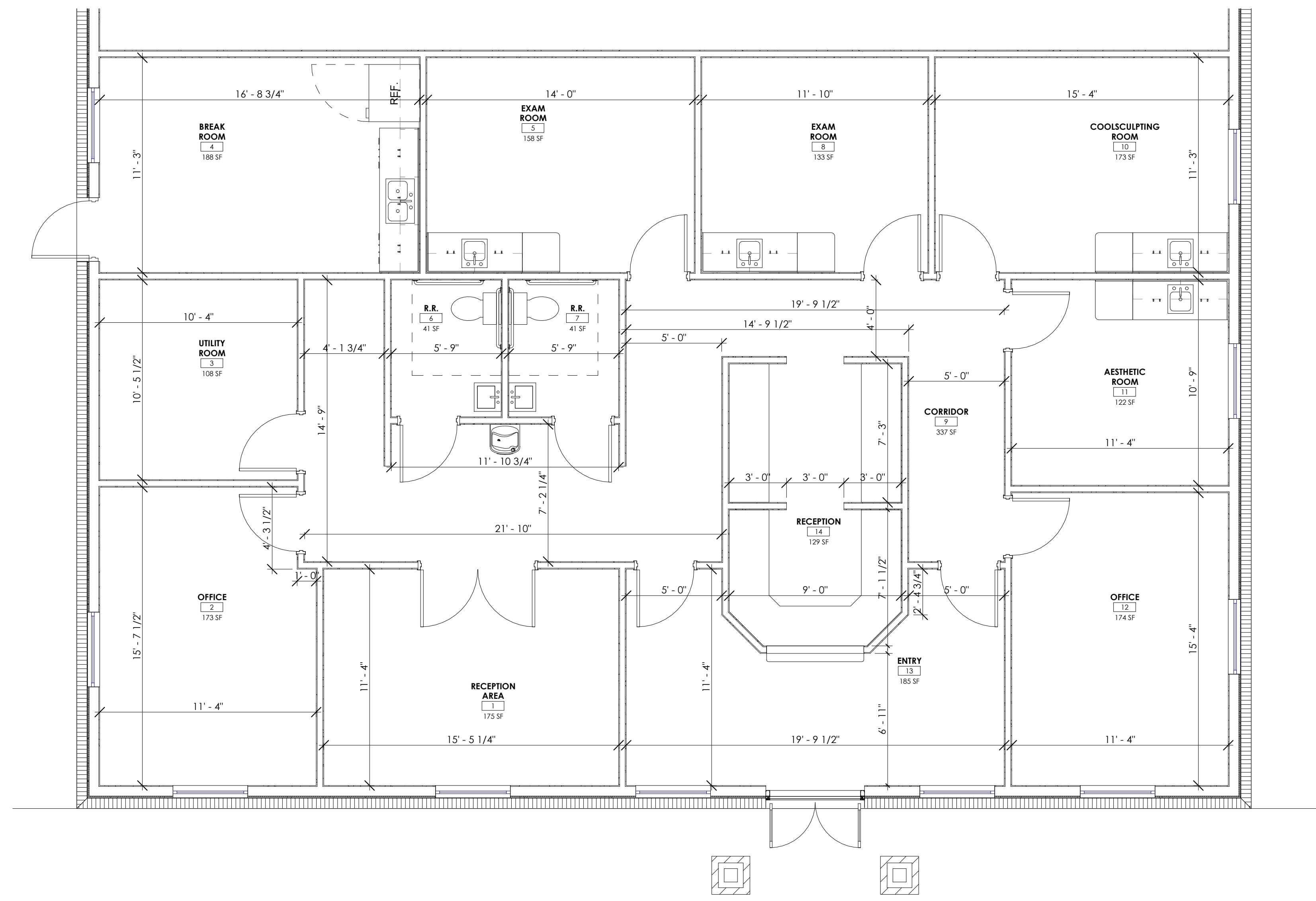


ALL REPORTS, SPECIFICATIONS, COMPUTER FILES, FIELD DATA AND OTHER DOCUMENTATION PREPARED BY KASPER ARCHITECTURE & DEVELOPMENT, INC. (KAD) AS INSTRUMENTS OF SERVICE SHALL REMAIN THE PROPERTY OF KAD. KAD SHALL RETAIN ALL COMMON LAW, STATUTORY AND OTHER RESERVED RIGHTS INCLUDING THE COPYRIGHT HERETO. THIS DRAWING SHALL NEVER BE REPRODUCED IN WHOLE OR IN PART WITHOUT THE EXPRESS WRITTEN PERMISSION OF KAD.

GENERAL PLAN NOTES:



1 AS-BUILT - FIRST FLOOR PLAN - SUITE A  
1/4" = 1'-0"



10175 Fortune Parkway, Suite 701  
Jacksonville, FL 32256  
p 904.683.9201  
www.kasperarch.com  
FL License No.: AA2600802

ERIK C. KASPER AR#0017162

FLEMING  
ISLAND  
MEDICAL  
PLAZA 1675

1675 EAGLE HARBOR  
ORANGE PARK, FL  
32003

PROJECT NO.: 21501  
DATE: FEB 15, 2021  
PRIOR ISSUES:

AS-BUILT -  
FLOOR PLAN  
- SUITE A

A0.6

DRAWN BY: JER  
CHECKED BY: BB

AS-BUILTS

# FLEMING ISLAND MEDICAL PLAZA 1675

1675 EAGLE HARBOR ORANGE PARK, FL 32003

PROJECT NO.: 21501

DATE: FEB 15, 2021

PRIOR ISSUES:

AS-BUILT -  
CLG PLAN -  
SUITE A

## A0.7

DRAWN BY: JER

CHECKED BY: BB

AS-BUILTS

### RCP LEGEND:

**ACT-1:**  
2x2x5/8" ACOUSTIC CEILING TILE - 'DUNE' (WHITE COLOR) BY ARMSTRONG WITH ANGLED TEGULAR EDGE AND PRELUDE 15/16" EXPOSED TEE GRID SYSTEM - WHITE FINISH OR APPROVED EQUAL

**ACT-2:**  
2x4x5/8" ACOUSTIC CEILING TILE - 'DUNE' (WHITE COLOR) BY ARMSTRONG WITH ANGLED TEGULAR EDGE AND PRELUDE 15/16" EXPOSED TEE GRID SYSTEM - WHITE FINISH OR APPROVED EQUAL

**GWB:**  
PAINTED  
GWB FINISH

**PRE-ENG CANOPY:**  
PRE-ENGINEERED ALUMINUM CANOPY

**HARDIE SOFFIT:**  
6" WIDE TONGUE AND GROOVE STAINED GRADE CEILING WITH PERIMETER TRIM

**VINYL SOFFIT (NON-VENTED):**  
TRIPLE T4 SOLID 4" VINYL SOFFIT WITH 0.038 THICKNESS BY PLYGEM OR APPROVED EQUAL, WHITE COLOR TYP.

**ATTIC HATCH:**  
AH-SERIES ALUMINUM ATTIC LADDER BY WERNER OR APPROVED EQUAL. AH2210 22.5"x54" OPENING SIZE INSTALL 1x2 TRIM AROUND PERIMETER - PAINT

2x4 LED LENSED LIGHT FIXTURE

LED STRIP LIGHT FIXTURE

2x4 LED DIRECT-INDIRECT LIGHT FIXTURE

2x2 LED LENSED LIGHT FIXTURE

2x2 LED DIRECT-INDIRECT LIGHT FIXTURE

PENDANT LIGHT FIXTURE

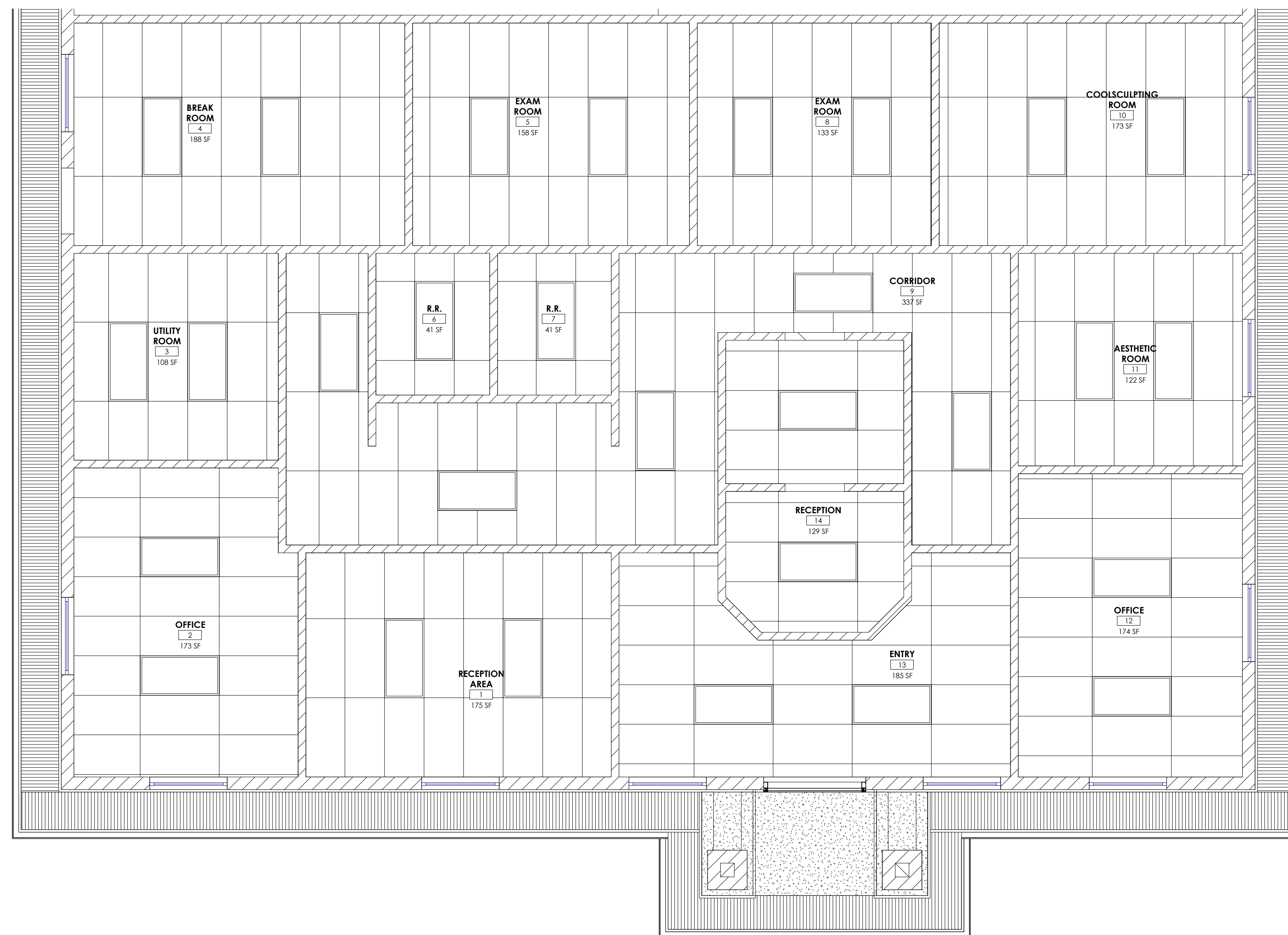
RECESSED DOWNLIGHT

LED EXTERIOR WALL PACK

SUPPLY DIFFUSER

RETURN DIFFUSER

EXHAUST



1 REFLECTED CEILING PLAN - SUITE A  
1/4" = 1'-0"

ALL REPORTS, SPECIFICATIONS, COMPUTER FILES, FIELD DATA AND OTHER DOCUMENTATION PREPARED BY KASPER ARCHITECTURE & DEVELOPMENT, INC. (KAD) AS INSTRUMENTS OF SERVICE SHALL REMAIN THE PROPERTY OF KAD. KAD SHALL RETAIN ALL COMMON LAW, STATUTORY AND OTHER RESERVED RIGHTS INCLUDING THE COPYRIGHT HERETO. THIS DRAWING SHALL NEVER BE REPRODUCED IN WHOLE OR IN PART WITHOUT THE EXPRESS WRITTEN PERMISSION OF KAD.