

# Office Space **AVAILABLE** FOR LEASE

*California Plaza*

**5001**  
**California Avenue**  
Bakersfield, CA

## Property Features

- Class A office space ready for immediate occupancy
- Great access to the Westside Pkwy & Highway 99
- Centrally located on the California Avenue Corridor
- Availability ranging from 1,034 to 8,597 SF
- Abundant parking - Monument signage available

The information contained herein may have been obtained from sources other than ASU Commercial. We have not verified such information and make no guarantees, warranties or representations about such information. It is your responsibility to independently confirm its accuracy and completeness prior to purchasing/leasing the property.

**Matthew E. Starr, SIOR, CCIM** ▪ Principal ▪ 661 616 3570 ▪ [matthew@asuassociates.com](mailto:matthew@asuassociates.com) ▪ CA RE #01367855

**Martin J. Starr** ▪ Principal ▪ 661 616 3567 ▪ [mjstarr@asuassociates.com](mailto:mjstarr@asuassociates.com) ▪ CA RE #01179469

**Jacob R. Shaw** ▪ Associate ▪ 661 616 3571 ▪ [jake@asuassociates.com](mailto:jake@asuassociates.com) ▪ CA RE #02283738

11601 Bolthouse Drive Suite 110 ▪ Bakersfield, CA 93311 ▪ 661 862 5454 main ▪ 661 862 5444 fax



# Office Space Available For Lease

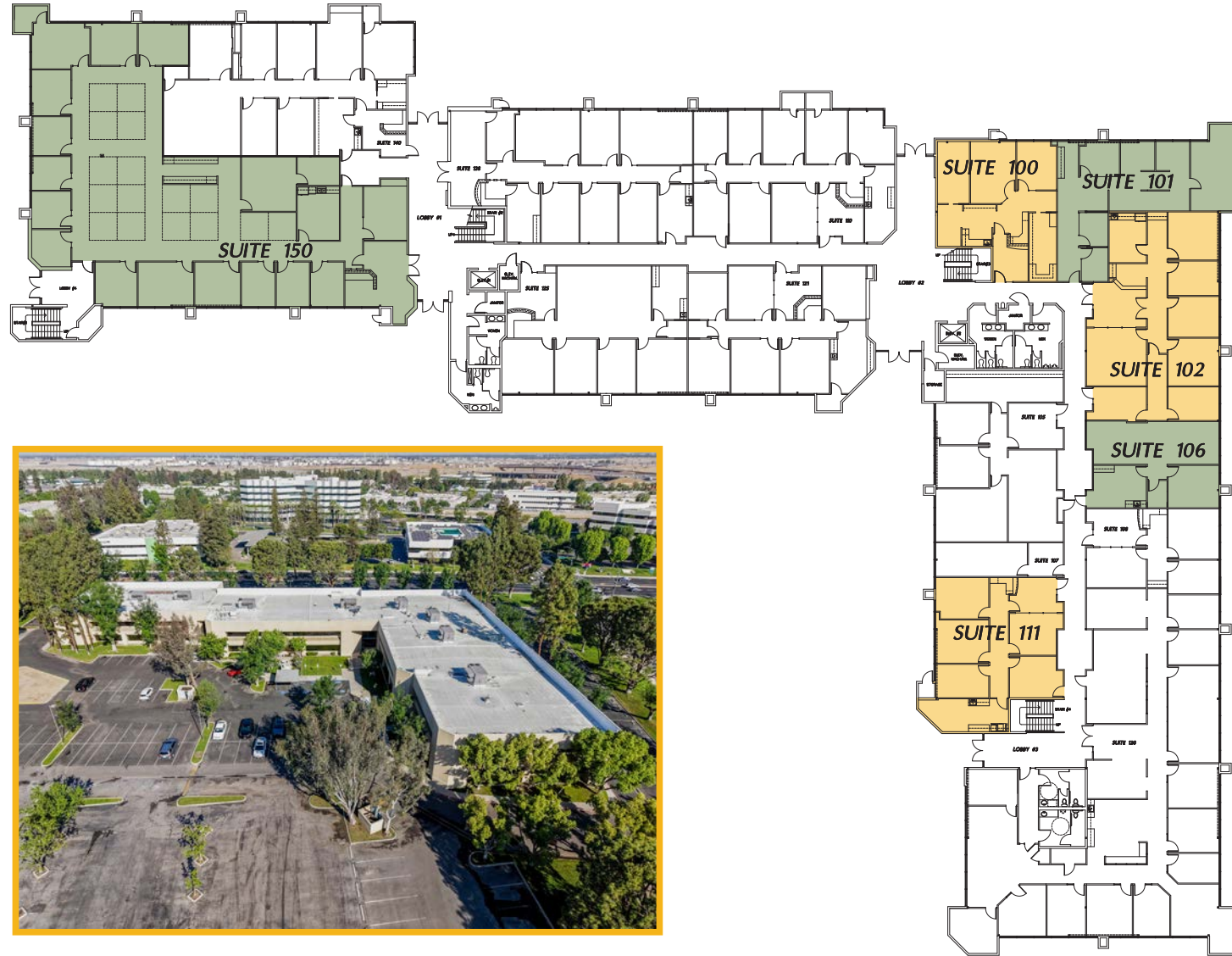
## Ground Floor Availability Floor Plan

5001 California Avenue - Bakersfield, CA

### Available Suites

- Suite 100 1,349 SF
- Suite 101 1,528 SF
- Suite 102 2,419 SF
- Suite 106 1,034 SF
- Suite 111 1,637 SF
- Suite 150 6,719 SF

\*Suites 100, 101, 102 and 106 can be combined for a total of 6,330 SF



### Offering Terms

- **Rental Rate** \$1.80 PSF MG  
Rents exclude utilities & janitorial services
- **Tenant Improvements** Negotiable

\*Plans deemed to be accurate, but not guaranteed. Plan not to scale.

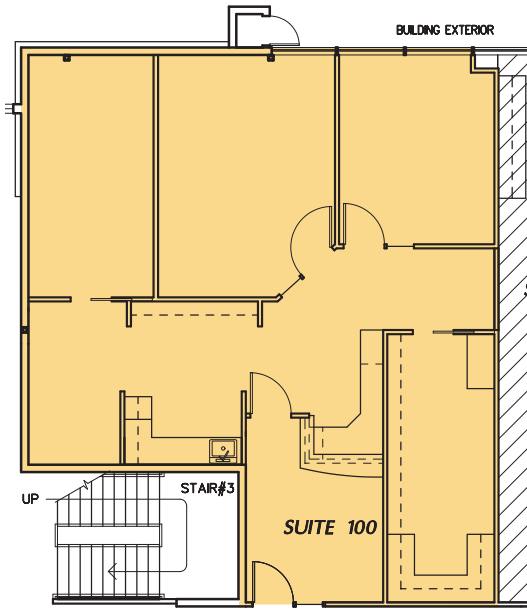


Matthew E. Starr, SIOR, CCIM ▪ Principal ▪ 661 616 3570 ▪ matthew@asuassociates.com ▪ CA RE #01367855  
 Martin J. Starr ▪ Principal ▪ 661 616 3567 ▪ mjstarr@asuassociates.com ▪ CA RE #01179469  
 Jacob R. Shaw ▪ Associate ▪ 661 616 3571 ▪ jake@asuassociates.com ▪ CA RE #02283738  
 11601 Bolthouse Drive Suite 110 ▪ Bakersfield, CA 93311 ▪ 661 862 5454 main ▪ 661 862 5444 fax

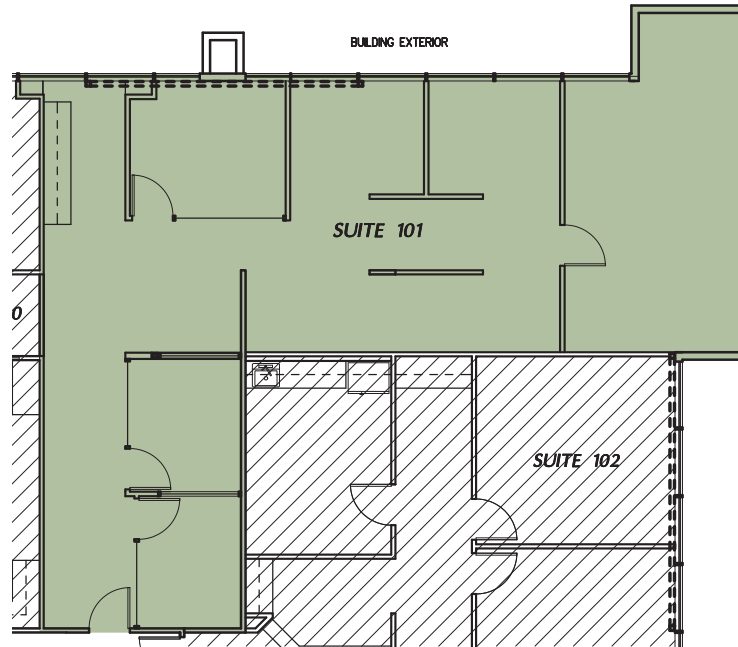
# Office Space Available For Lease

## Ground Floor Availability Floor Plan

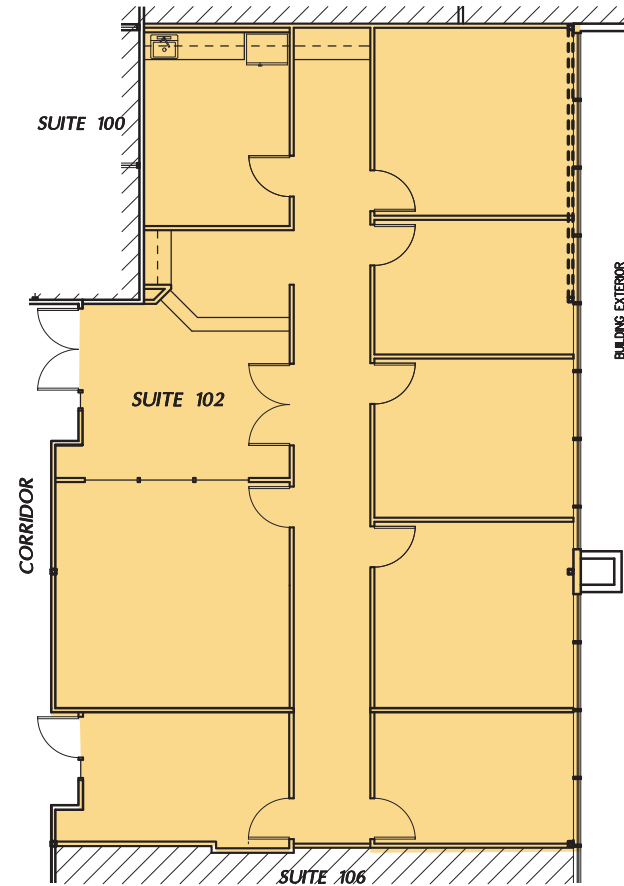
5001 California Avenue - Bakersfield, CA



**Suite 100**  
1,349 SF



**Suite 101**  
1,528 SF



**Suite 102**  
2,419 SF

*\*Plans deemed to be accurate, but not guaranteed. Plan not to scale.*

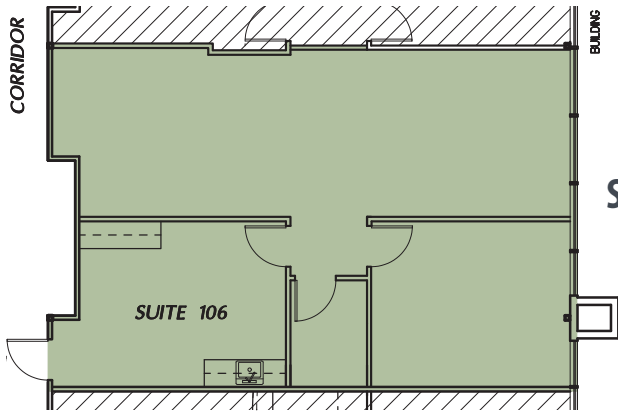


**Matthew E. Starr, SIOR, CCIM** ▪ Principal ▪ 661 616 3570 ▪ [matthew@asuassociates.com](mailto:matthew@asuassociates.com) ▪ CA RE #01367855  
**Martin J. Starr** ▪ Principal ▪ 661 616 3567 ▪ [mjstarr@asuassociates.com](mailto:mjstarr@asuassociates.com) ▪ CA RE #01179469  
**Jacob R. Shaw** ▪ Associate ▪ 661 616 3571 ▪ [jake@asuassociates.com](mailto:jake@asuassociates.com) ▪ CA RE #02283738  
11601 Bolthouse Drive Suite 110 ▪ Bakersfield, CA 93311 ▪ 661 862 5454 main ▪ 661 862 5444 fax

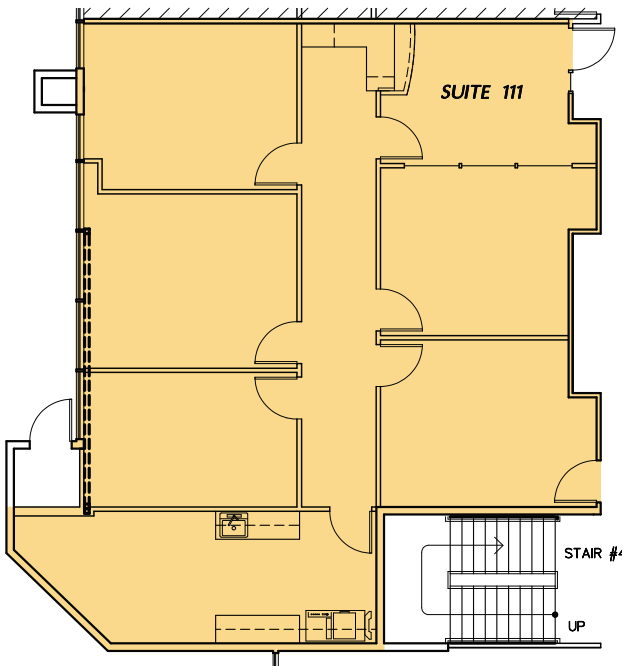
# Office Space Available For Lease

## Ground Floor Availability Floor Plan

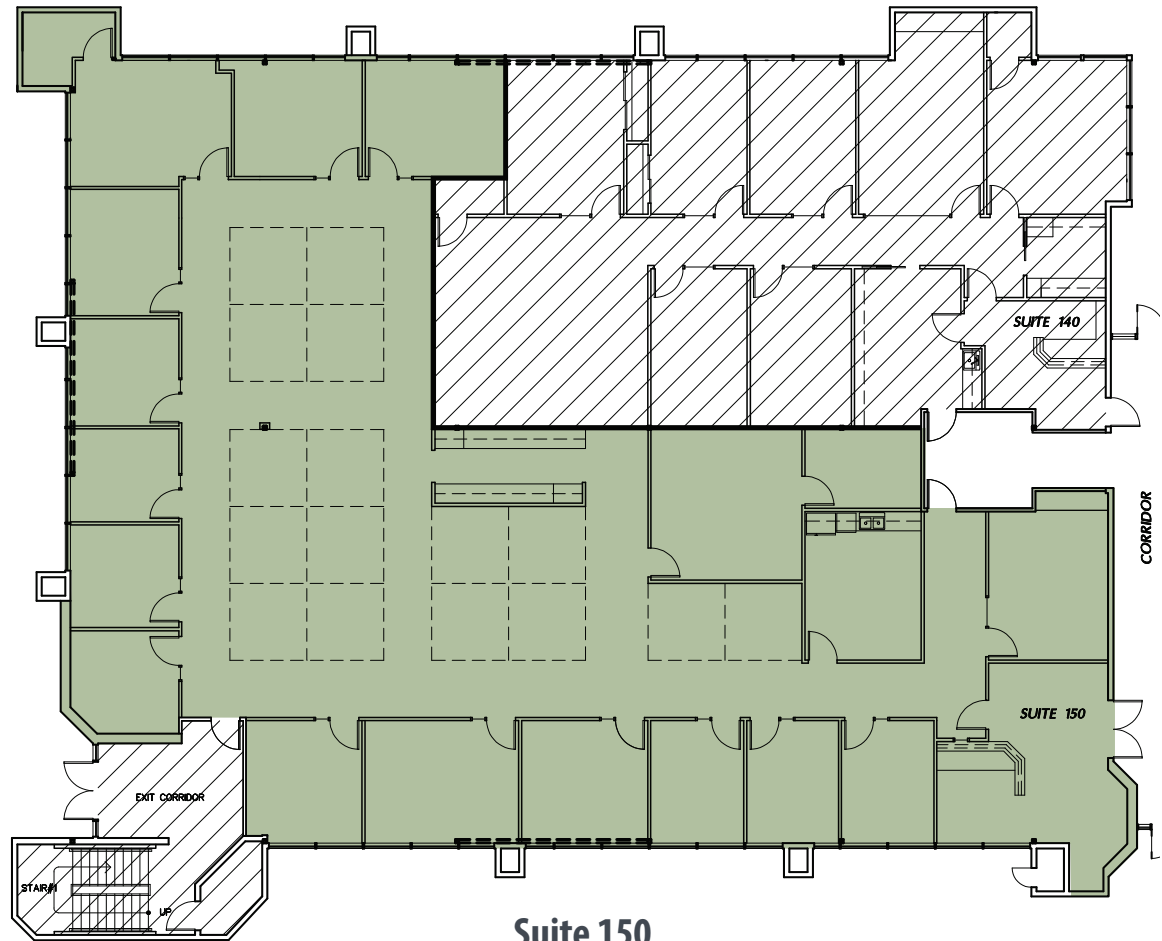
5001 California Avenue - Bakersfield, CA



**Suite 106**  
1,034 SF



**Suite 111**  
1,637 SF



**Suite 150**  
6,719 SF

*\*Plans deemed to be accurate, but not guaranteed. Plan not to scale.*

# Office Space Available For Lease

## Second Floor Availability Floor Plan

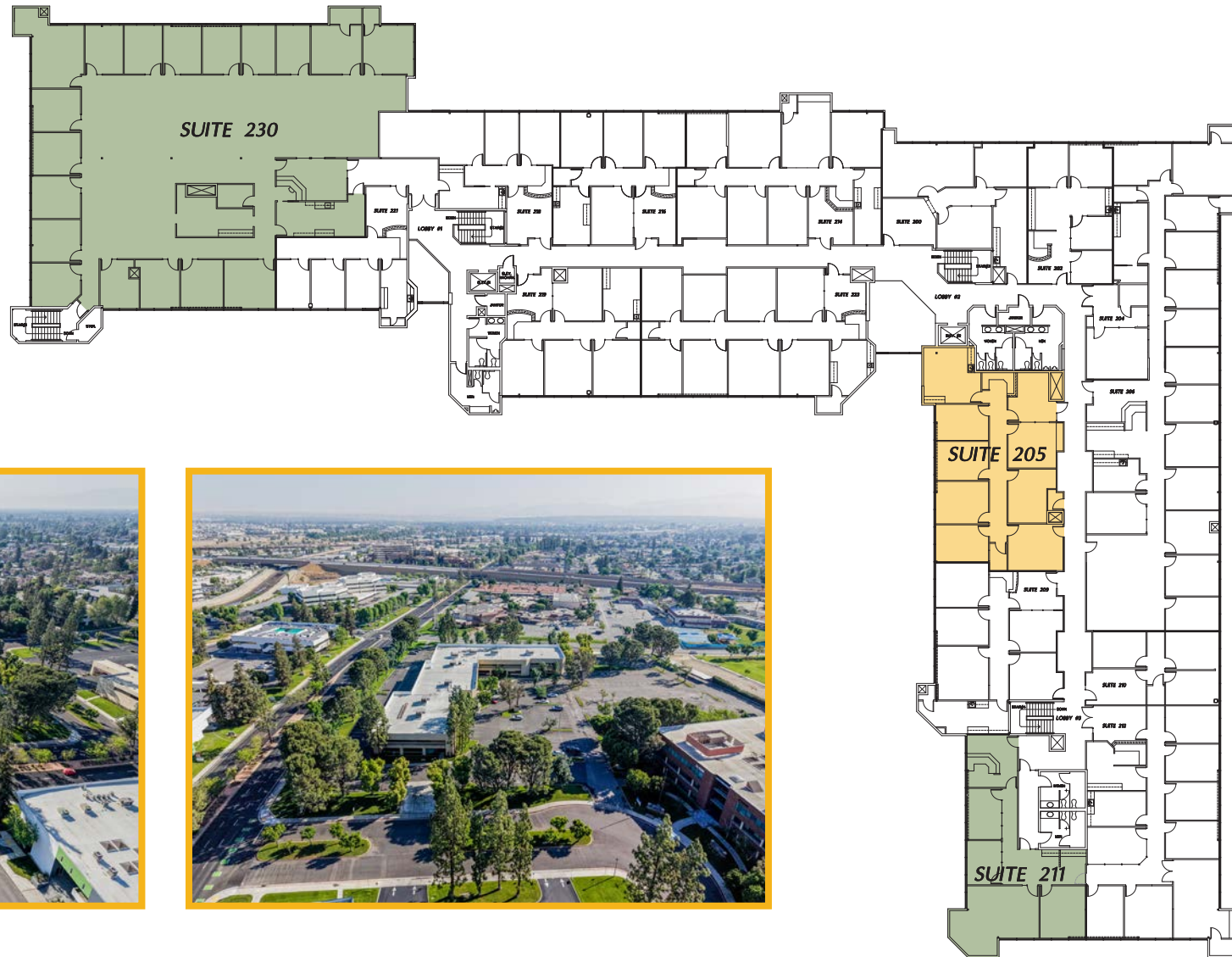
5001 California Avenue - Bakersfield, CA

### Available Suites

- Suite 205 2,350 SF
- Suite 211 1,609 SF
- Suite 230 8,597 SF

### Offering Terms

- Rental Rate \$1.80 PSF MG  
Rents exclude utilities & janitorial services
- Tenant Improvements Negotiable



\*Plans deemed to be accurate, but not guaranteed. Plan not to scale.

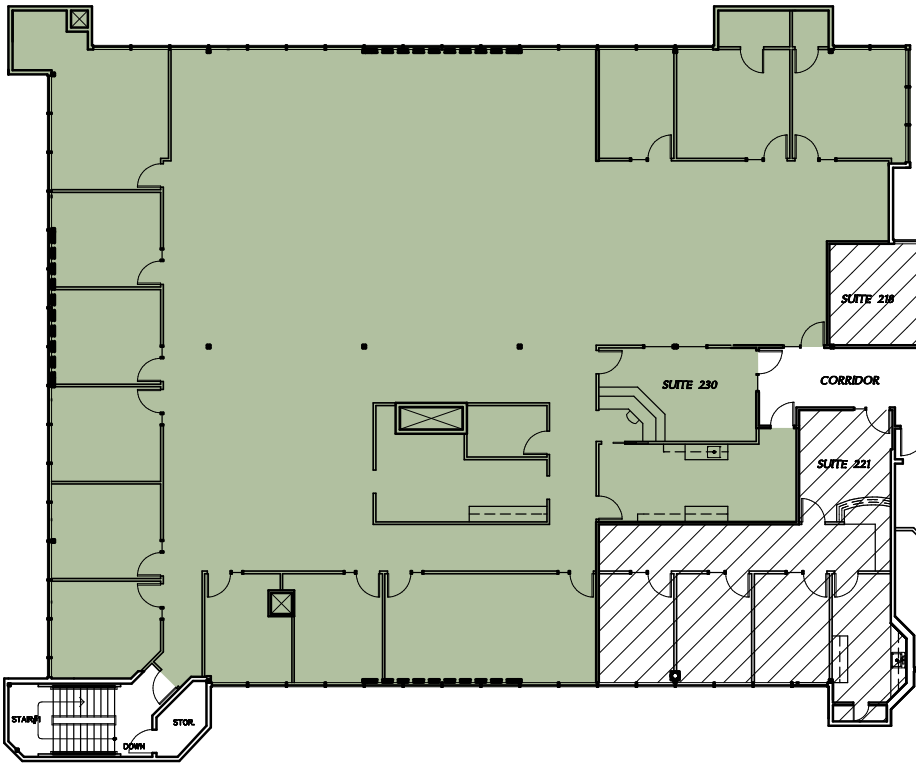


Matthew E. Starr, SIOR, CCIM ▪ Principal ▪ 661 616 3570 ▪ matthew@asuassociates.com ▪ CA RE #01367855  
 Martin J. Starr ▪ Principal ▪ 661 616 3567 ▪ mjstarr@asuassociates.com ▪ CA RE #01179469  
 Jacob R. Shaw ▪ Associate ▪ 661 616 3571 ▪ jake@asuassociates.com ▪ CA RE #02283738  
 11601 Bolthouse Drive Suite 110 ▪ Bakersfield, CA 93311 ▪ 661 862 5454 main ▪ 661 862 5444 fax

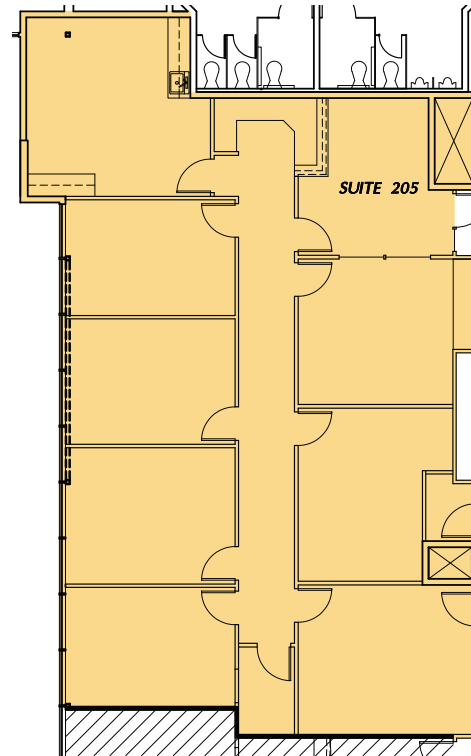
# Office Space Available For Lease

## Second Floor Availability Floor Plan

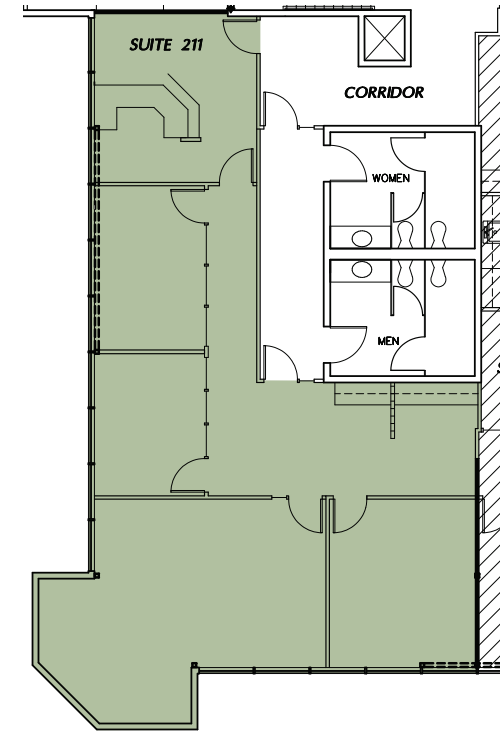
5001 California Avenue - Bakersfield, CA



**Suite 230**  
8,597 SF



**Suite 205**  
2,350 SF



**Suite 211**  
1,609 SF

*\*Plans deemed to be accurate, but not guaranteed. Plan not to scale.*

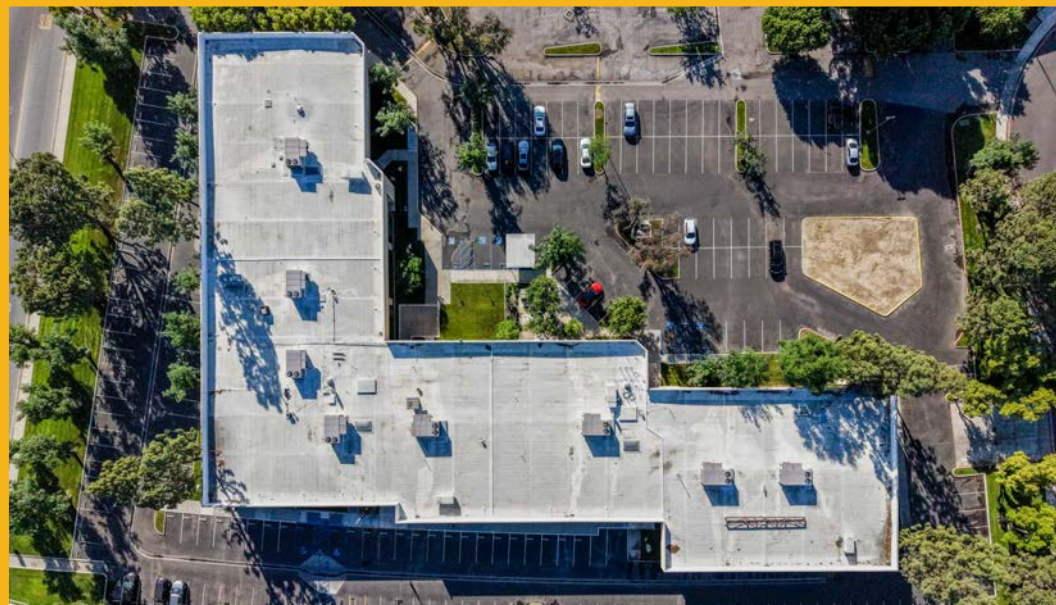


**Matthew E. Starr, SIOR, CCIM** • Principal • 661 616 3570 • [matthew@asuassociates.com](mailto:matthew@asuassociates.com) • CA RE #01367855  
**Martin J. Starr** • Principal • 661 616 3567 • [mjstarr@asuassociates.com](mailto:mjstarr@asuassociates.com) • CA RE #01179469  
**Jacob R. Shaw** • Associate • 661 616 3571 • [jake@asuassociates.com](mailto:jake@asuassociates.com) • CA RE #02283738  
11601 Bolthouse Drive Suite 110 • Bakersfield, CA 93311 • 661 862 5454 main • 661 862 5444 fax

# Office Space Available For Lease

## Property Photos

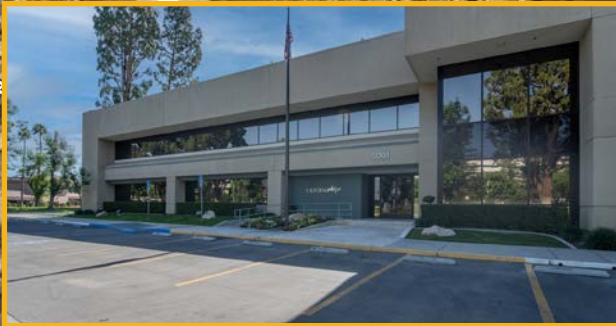
5001 California Avenue - Bakersfield, CA



# Office Space Available For Lease

## Aerial of Southwest Submarket

5001 California Avenue - Bakersfield, CA



5001 California Avenue

