

FLEX CONDO FOR SALE/LEASE
541 SOUTHLAKE BLVD.

SOUTHPORT BUSINESS CENTER
RICHMOND, VIRGINIA 23236



**CUSHMAN &
WAKEFIELD**

THALHIMER

2,876 SF AVAILABLE

GREAT CENTRAL LOCATION
IN MIDLOTHIAN CORRIDOR

**AVAILABLE
7/1/2026**

PROPERTY FEATURES



2,876 SF

FLEX CONDO AVAILABLE FOR SALE OR LEASE



FEATURES

- NEWLY INSTALLED HVAC
- RENOVATED OFFICE & RESTROOMS
- OWNER OCCUPANT OR INVESTMENT OPPORTUNITY
- CONTACT BROKERS FOR ASKING PRICE



LOCATION

GREAT CENTRAL LOCATION | MIDLOTHIAN CORRIDOR



LOADING

ONE DOCK DOOR



CEILING HEIGHT

14' CLEAR



LEASE RATE

\$15.00 PSF, IG



ZONING

M-1



TIMING

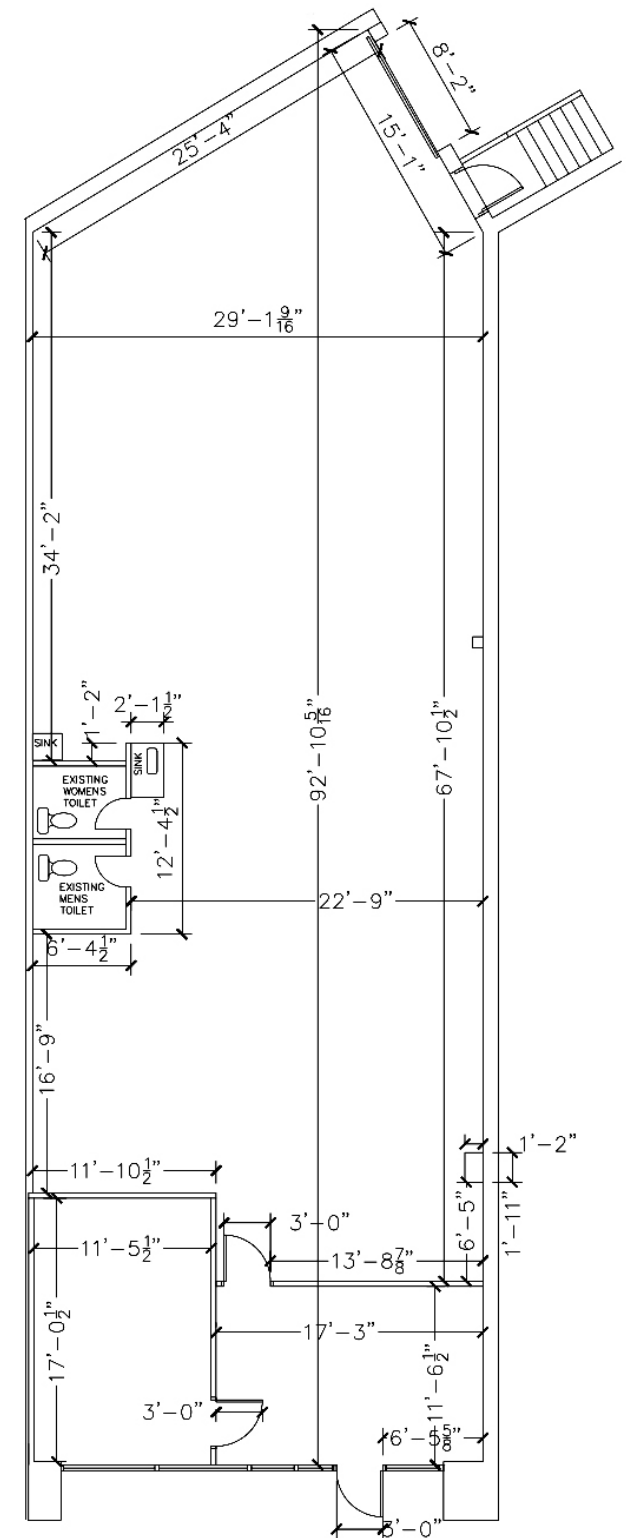
7/1/2026



- LOADING ACCOMMODATES TRACTOR TRAILERS
- EASY EXIT ROUTE FOR TRUCKS
- TRUCKS FOLLOW YELLOW LINE FOR ENTRY/EXIT

541 SOUTHLAKE BLVD.

PROPERTY PHOTOS & FLOORPLAN





CRAIG DOUGLAS
Senior Associate
804 344 7153
craig.douglas@thalhimer.com

KATIE SIEGEL
Associate
804 344 7188
katie.siegel@thalhimer.com

Independently Owned and Operated / A Member of the Cushman & Wakefield Alliance

Cushman & Wakefield | Thalhimer © 2026. No warranty or representation, express or implied, is made to the accuracy or completeness of the information contained herein, and same is submitted subject to errors, omissions, change of price, rental or other conditions, withdrawal without notice, and to any special listing conditions imposed by the property owner(s). As applicable, we make no representation as to the condition of the property (or properties) in question.