

Hwy 29 North Newnan, GA 30265

in the Arbor Springs Village Center



ZONING:

O-I: Office Institutional

C7: Corner Parcel

Price: \$5,307,500

GAMLS #: 20115363

19.3 +/- Acres



PROPERTY DETAILS

- Perfect Site for Professional Offices, Day Care Center, or Medical Office Complex.
- Located in northern portion of Coweta County, near Arbor Springs golf course community, Lake Redwine and Serenbe.
- Site is located in the Quality Development Corridor Overlay District near Exit 51, Interstate 85.
- High visibility on State Highway 29 with average annual 14,700 daily traffic count.

**BERKSHIRE
HATHAWAY**
HOMESERVICES

GEORGIA
PROPERTIES

Crystal Bashakes, REALTOR®

Cell: 678-776-2280

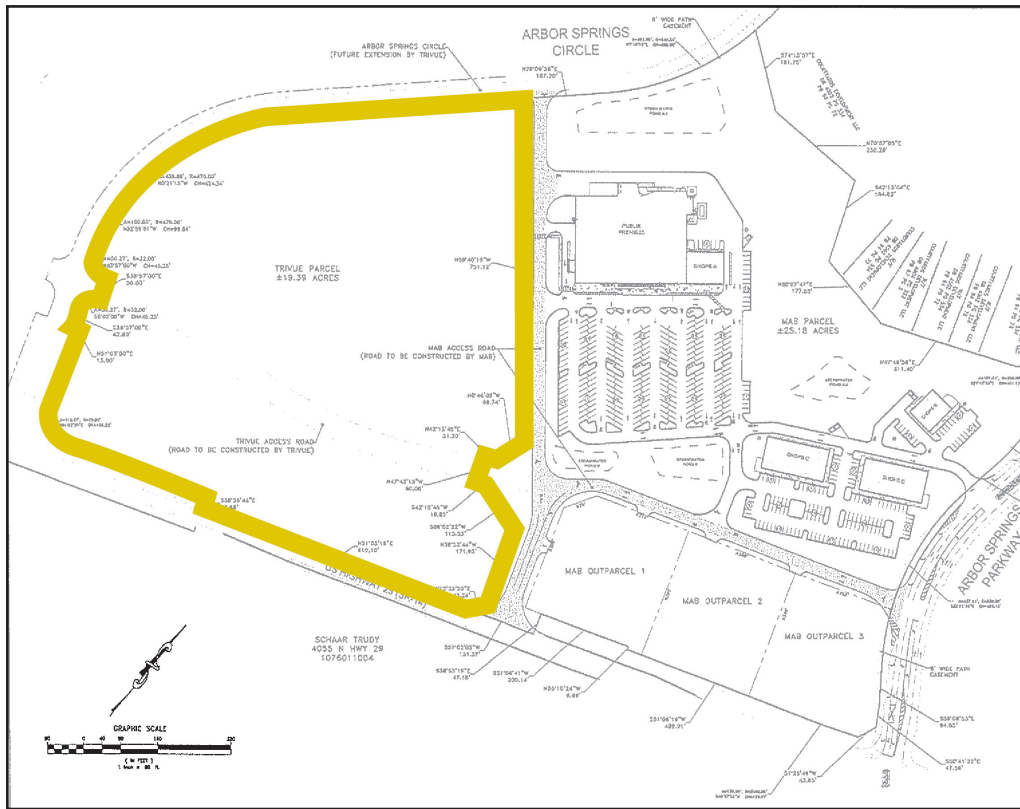
Office: 770-487-8300

www.crystalbashakes.bhhsgeorgia.com

crystal.bashakes@bhhsgeorgia.com

Hwy 29 North Newnan, GA 30265

Map and Survey



DISTANCE TO SITE (MILES)

I-85:
1 Mile

I-285 (via I-85):
15 Miles

Downtown Atlanta:
30 +/- Miles

**Hartsfield-Jackson
Atlanta Airport:**
22 Miles

Downtown Newnan:
10 Miles

BERKSHIRE HATHAWAY | GEORGIA PROPERTIES
HOMESERVICES

Crystal Bashakes, REALTOR®
Cell: 678-776-2280 | Offic: 770-487-8300

Hwy 29 North Newnan, GA 30265

Surrounding Area



- Neighboring property address: 3836 US-29, Newnan GA 30265
- Sewer & water: Coweta County Water & Sewage Authority
- Population of Coweta County is 151,481 (choosecoweta.com)
- This property has over 900 feet of frontage on US Highway 29

BERKSHIRE HATHAWAY | GEORGIA PROPERTIES
HOMESERVICES

Crystal Bashakes, REALTOR®
Cell: 678-776-2280 | Office: 770-487-8300