

Columbia

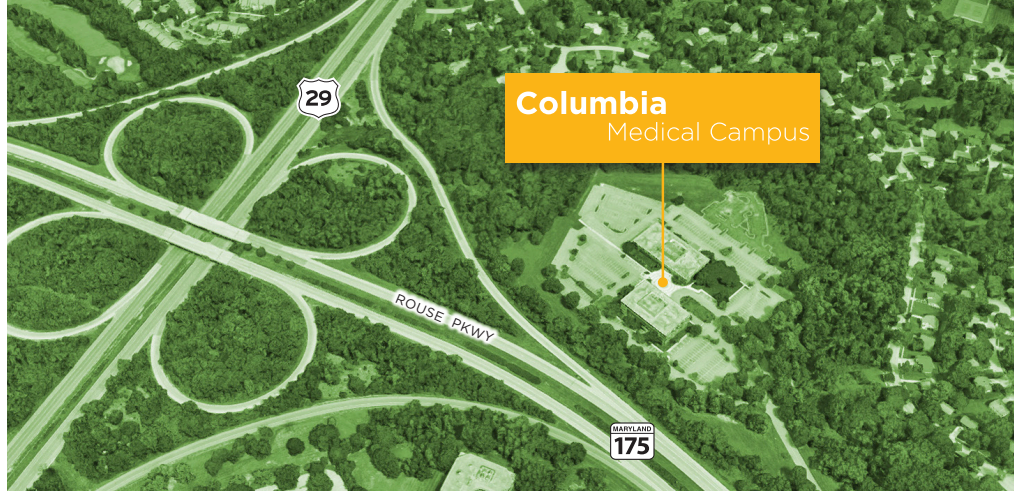
Medical Campus



FOR LEASE

**Class A medical space
in Columbia, MD**

5450 & 5500
Knoll North Drive
Columbia, MD



FEATURES

Two-building medical office complex totaling 155,314 s.f. on a 36.18 acre campus setting

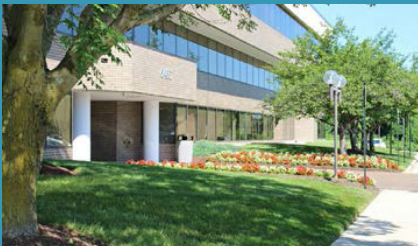
Common area renovations and capital improvements completed

Suites ranging from 1,277 s.f. to 22,823 s.f.

Pharmacy, lab and radiology on site

739 free parking spaces

Great highway access and minutes to Columbia Town Center



MEDICAL DISCIPLINES

Cardiology	Gastroenterology	Pain Management
Clinical LAB	Internal Medicine	Pediatric Dentistry
Dentistry	Multi-Care	Pharmacy
Endocrine	Podiatry	Physical Therapy
Orthopedics	Oncology	

AVAILABILITY SHEET

SUITE - 5450 KNOLL NORTH

180	7,933 s.f.
200	22,823 s.f.
370	1,277 s.f.

SUITE - 5500 KNOLL NORTH

502	3,327 s.f.
-----	------------

AVAILABILITY

5450 Knoll North Drive

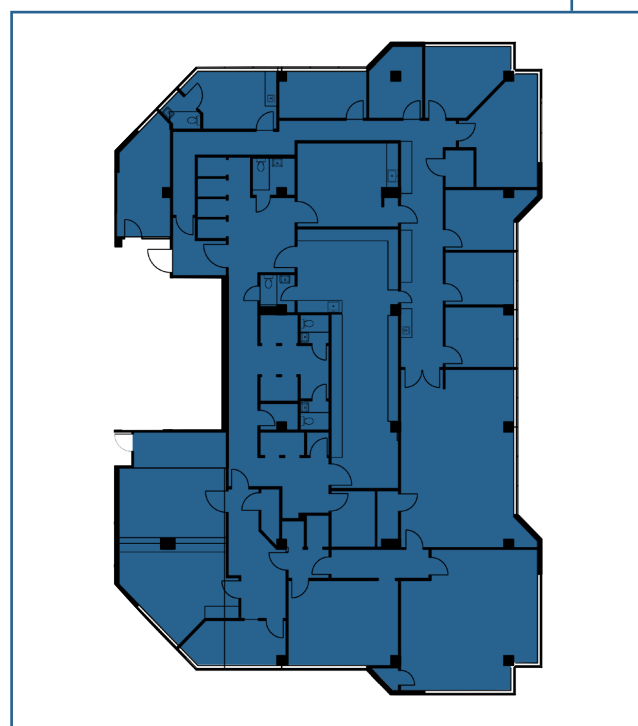
Suite 180 - 7,933 s.f.



5450 | 1st Floor



Suite 180
7,933 s.f.



AVAILABILITY

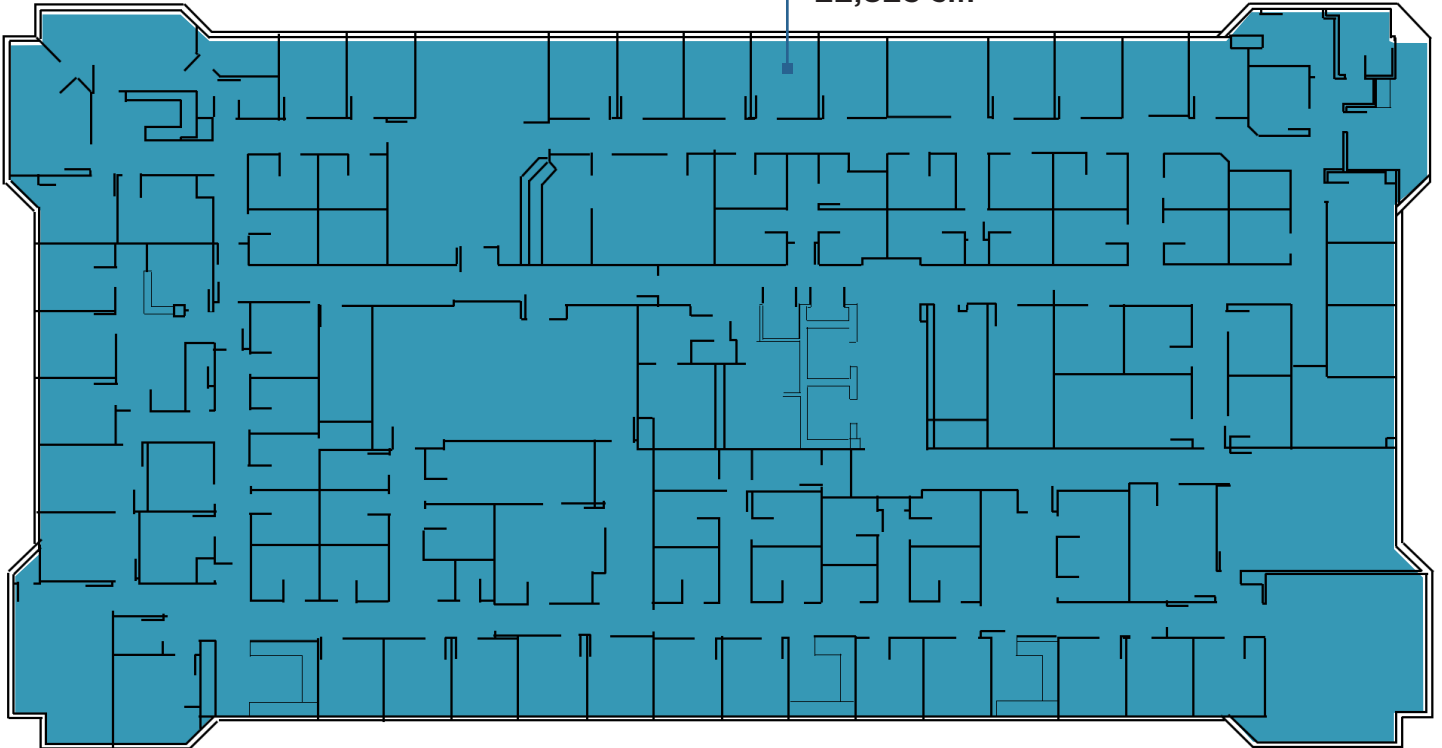
5450 Knoll North Drive

Suite 200 - 22,823 s.f.



5450 | 2nd Floor

Suite 200
22,823 s.f.



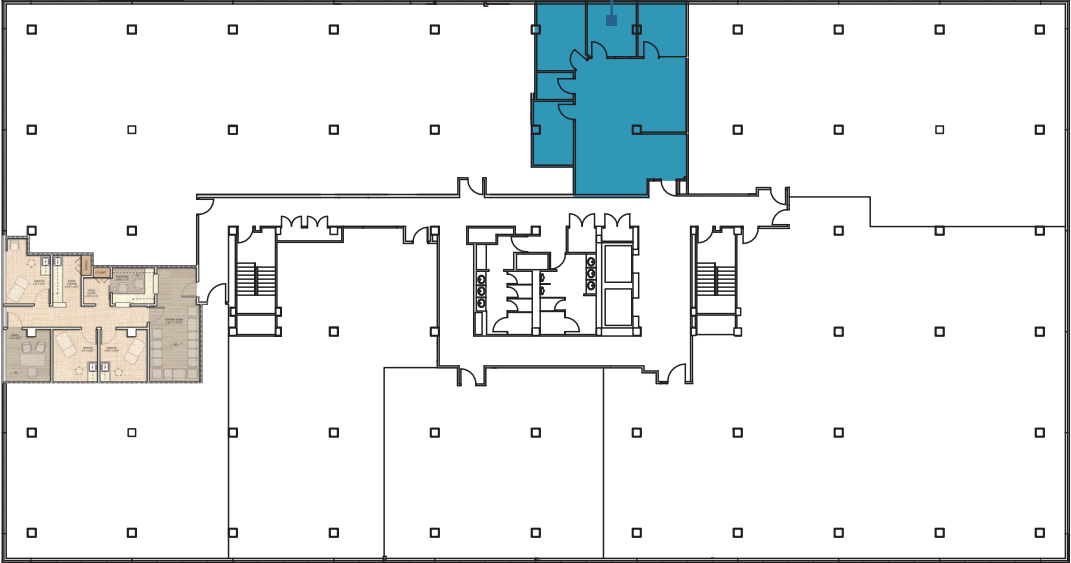
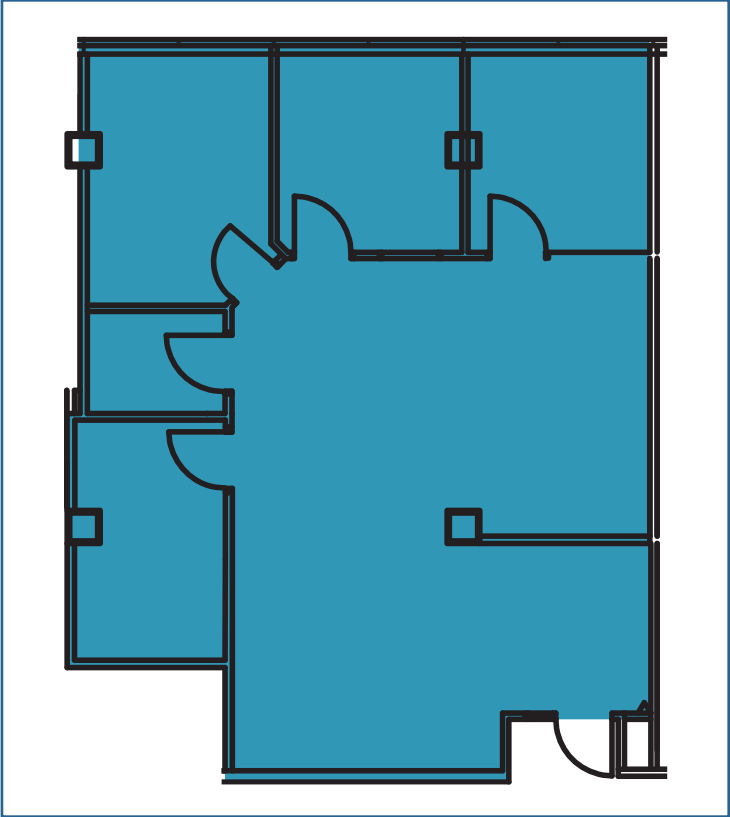
AVAILABILITY

5450 Knoll North Drive

Suite 370 | 1,277 s.f.



5450 | 3rd Floor





JOIN OUR PRESTIGIOUS TENANT ROSTER INCLUDING

Johns Hopkins Medicine

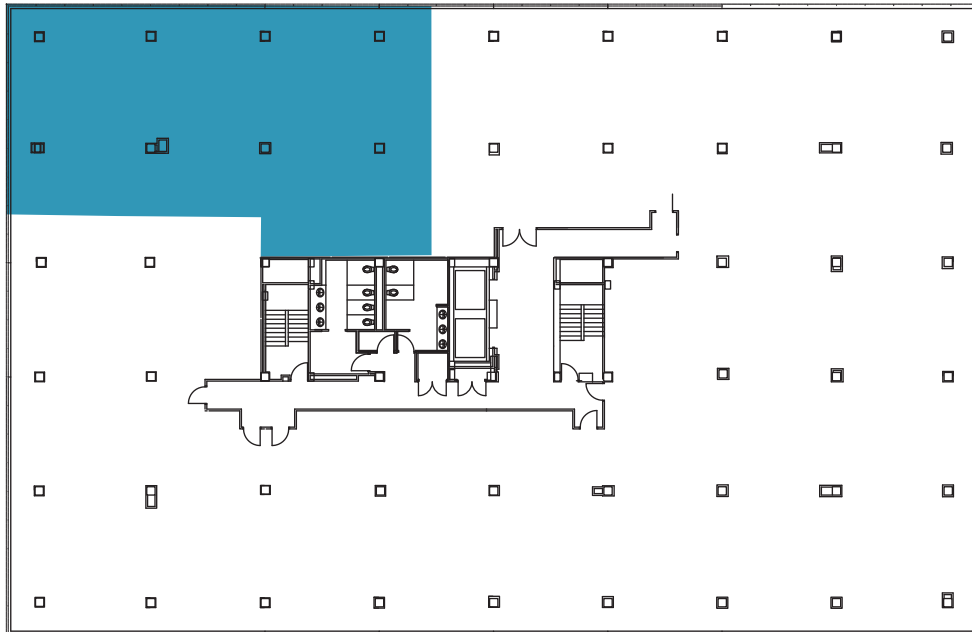
LifeBridge Health

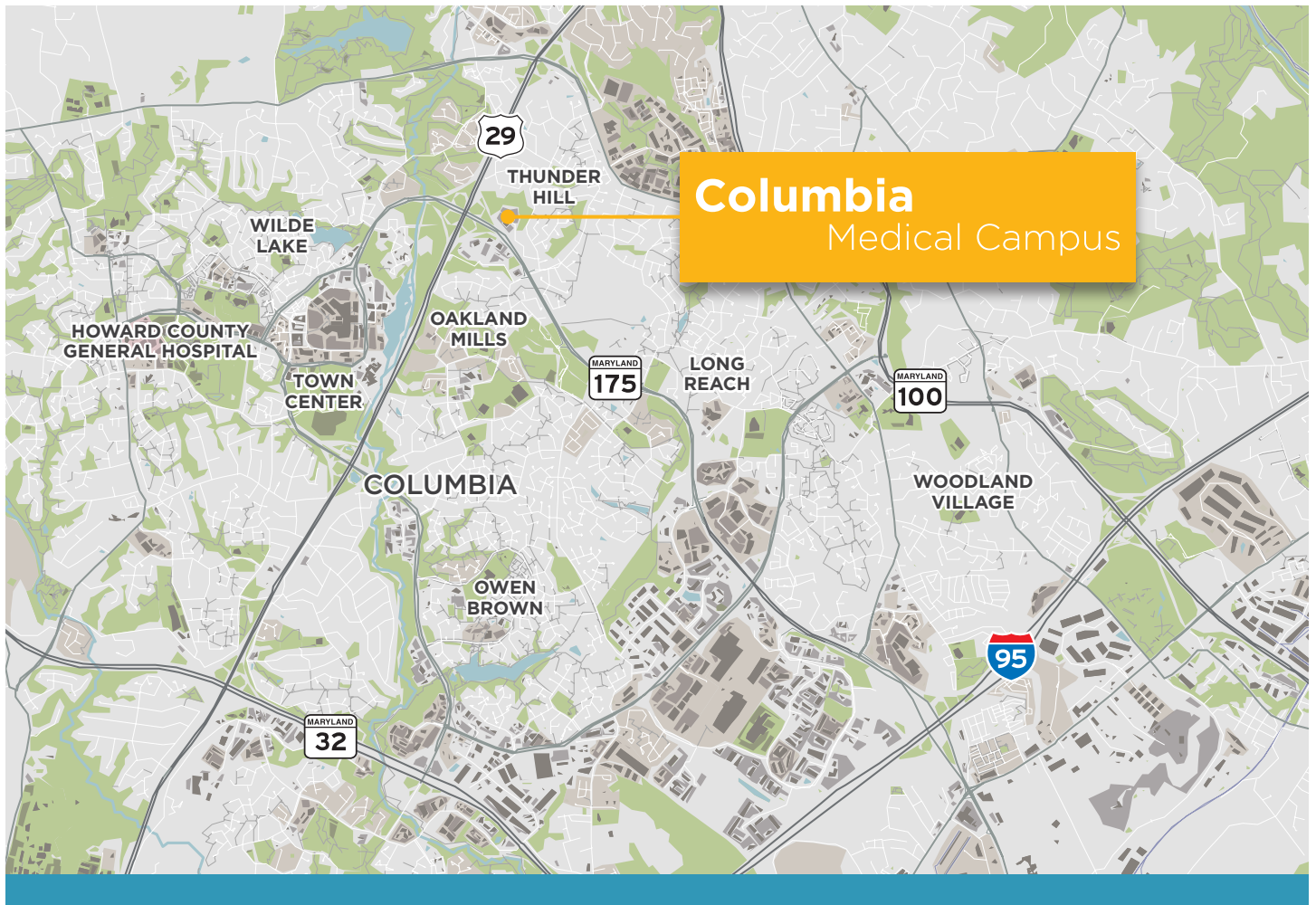
University of Maryland
Medical System

Chase Brexton

LabCorp

5500 | 5th Floor
Suite 502 - 3,327 s.f.





Owned and professionally managed on-site by Welltower, one of the leading operators of outpatient medical facilities in the nation.

Rob Freedman SIOR
410 452 9444
rob.freedman@jll.com

Dominic Digiovannantonio
301 752 6799
dom.digi@jll.com

jll.com/baltimore

Although information has been obtained from sources deemed reliable, JLL does not make any guarantees, warranties or representations, express or implied, as to the completeness or accuracy as to the information contained herein. Any projections, opinions, assumptions or estimates used are for example only. There may be differences between projected and actual results, and those differences may be material. JLL does not accept any liability for any loss or damage suffered by any party resulting from reliance on this information. If the recipient of this information has signed a confidentiality agreement with JLL regarding this matter, this information is subject to the terms of that agreement. ©2025 Jones Lang LaSalle Brokerage, Inc. All rights reserved.