



GROUND MATRIX



FOR LEASE

SINGLE TENANT OFFICE
BUILDING

3043

MISSION

San Francisco, CA 94110



 **bitcoin**
NOW ACCEPTED AS LEASE PAYMENT

Presented By:

Jake Levinson

415.786.4303
jake@groundmatrix.com
CalDRE #02021931

Alex Fee

209.981.7753
alex@groundmatrix.com
CalDRE #02018515

FOR LEASE | OFFICE BUILDING

Property Summary



PROPERTY DESCRIPTION

3043 Mission is a rarity in the Mission District. We have two full floors of high-end, tech-oriented space available for lease. The building is conveniently located on 25th and Mission in a bevy of excellent Taquerias, shops, bars, and parks. Two blocks from the 24th & Mission BART station, direct Muni lines through the block.



OFFERING SUMMARY

Lease Rate:	Years 1-2: \$36.00/SF Years 3 - 5+: \$48.00/SF
Lease Type:	Modified Gross
Timing:	Flexible
Available SF:	5,600 SF (2,800 SF)
Building Size:	10,000 SF

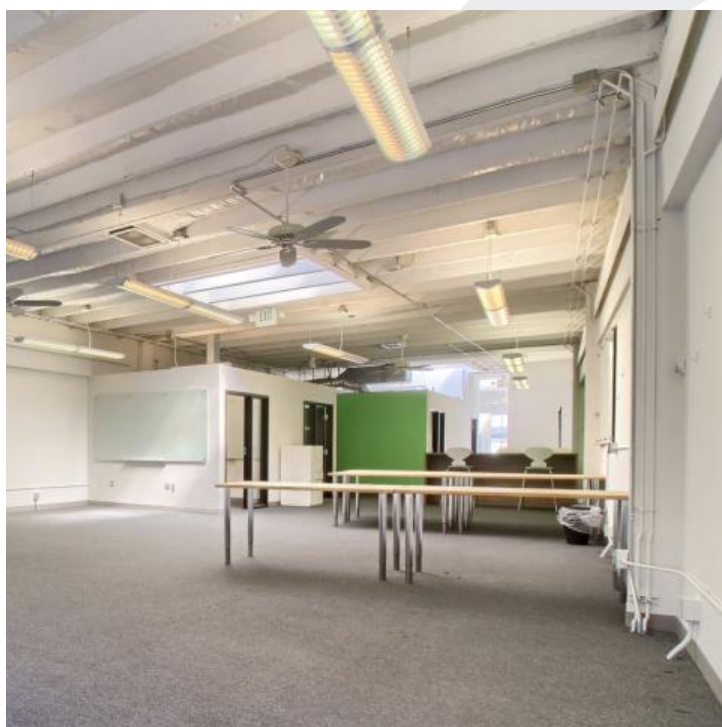
Jake Levinson
415.786.4303
jake@groundmatrix.com
CalDRE #02021931

Alex Fee
209.981.7753
alex@groundmatrix.com
CalDRE #02018515

Clayton Demski
415.246.6999
clayton@groundmatrix.com
CalDRE #02117089

FOR LEASE | OFFICE BUILDING

Property Summary



LOCATION DESCRIPTION

Named for the 1776-built Mission Dolores, the Mission District is an exuberant, evolving neighborhood with Latino roots and a hipster vibe. Old-school taquerias and eclectic live-music clubs mix with chef-driven eateries and craft cocktail lounges. There are also tattoo parlors, gourmet ice cream shops and Dolores Park, a popular weekend hangout with skyline views. Vibrant murals line streets such as Clarion Alley.

PROPERTY HIGHLIGHTS

- Five private offices
- One phone booth
- Two conference rooms
- Two kitchens
- Four bathrooms (one ADA compliant)
- Open floorplate
- Exposed concrete aesthetic
- Wall-to-wall window frontage
- Ample basement storage

Jake Levinson

415.786.4303
jake@groundmatrix.com
CalDRE #02021931

Alex Fee

209.981.7753
alex@groundmatrix.com
CalDRE #02018515

Clayton Demski

415.246.6999
clayton@groundmatrix.com
CalDRE #02117089

3043

MISSION

San Francisco, CA 94110



GROUND MATRIX

FOR LEASE | OFFICE BUILDING

3043 MISSION



Jake Levinson
415.786.4303
jake@groundmatrix.com
CalDRE #02021931

Alex Fee
209.981.7753
alex@groundmatrix.com
CalDRE #02018515

Clayton Demski
415.246.6999
clayton@groundmatrix.com
CalDRE #02117089

3043

MISSION

San Francisco, CA 94110



GROUND MATRIX

FOR LEASE | OFFICE BUILDING

3043 Mission



Jake Levinson
415.786.4303
jake@groundmatrix.com
CalDRE #02021931

Alex Fee
209.981.7753
alex@groundmatrix.com
CalDRE #02018515

Clayton Demski
415.246.6999
clayton@groundmatrix.com
CalDRE #02117089

3043

MISSION

San Francisco, CA 94110



GROUND MATRIX

FOR LEASE | OFFICE BUILDING

Retailer Map



Jake Levinson
415.786.4303
jake@groundmatrix.com
CalDRE #02021931

Alex Fee
209.981.7753
alex@groundmatrix.com
CalDRE #02018515

Clayton Demski
415.246.6999
clayton@groundmatrix.com
CalDRE #02117089