

SKYVIEW BUSINESS PARK



FOR LEASE

4530 S. Decatur Blvd. Las Vegas, NV 89103

PROPERTY FEATURES:

- Rates from \$1.35 NNN
- \$0.38 CAM
- High End Office Building
- Beautiful Common Areas w/ Atrium on 2nd Floor
- Views of The Las Vegas Strip
- On-Site Management
- Security Systems in Place
- Prominent Pylon Signage
- Abundant Parking – Covered Space Available
- Close Proximity to I-15, CC 215 and The Las Vegas Strip

GRIFFIS REALTY INVESTMENTS

Commercial Real Estate Services | Joe Griffis

7381 W Charleston Blvd | Ste 110 | Las Vegas, NV 89117 | T 702.341.0081 | C 702.406.6867



The information contained herein has been obtained through sources deemed reliable but cannot be guaranteed as to its accuracy. Any information of special interest should be obtained through independent verification.



GRIFFIS REALTY INVESTMENTS

Commercial Real Estate Services | Joe Griffis

7381 W Charleston Blvd | Ste 110 | Las Vegas, NV 89117 | T 702.341.0081 | C 702.406.6867



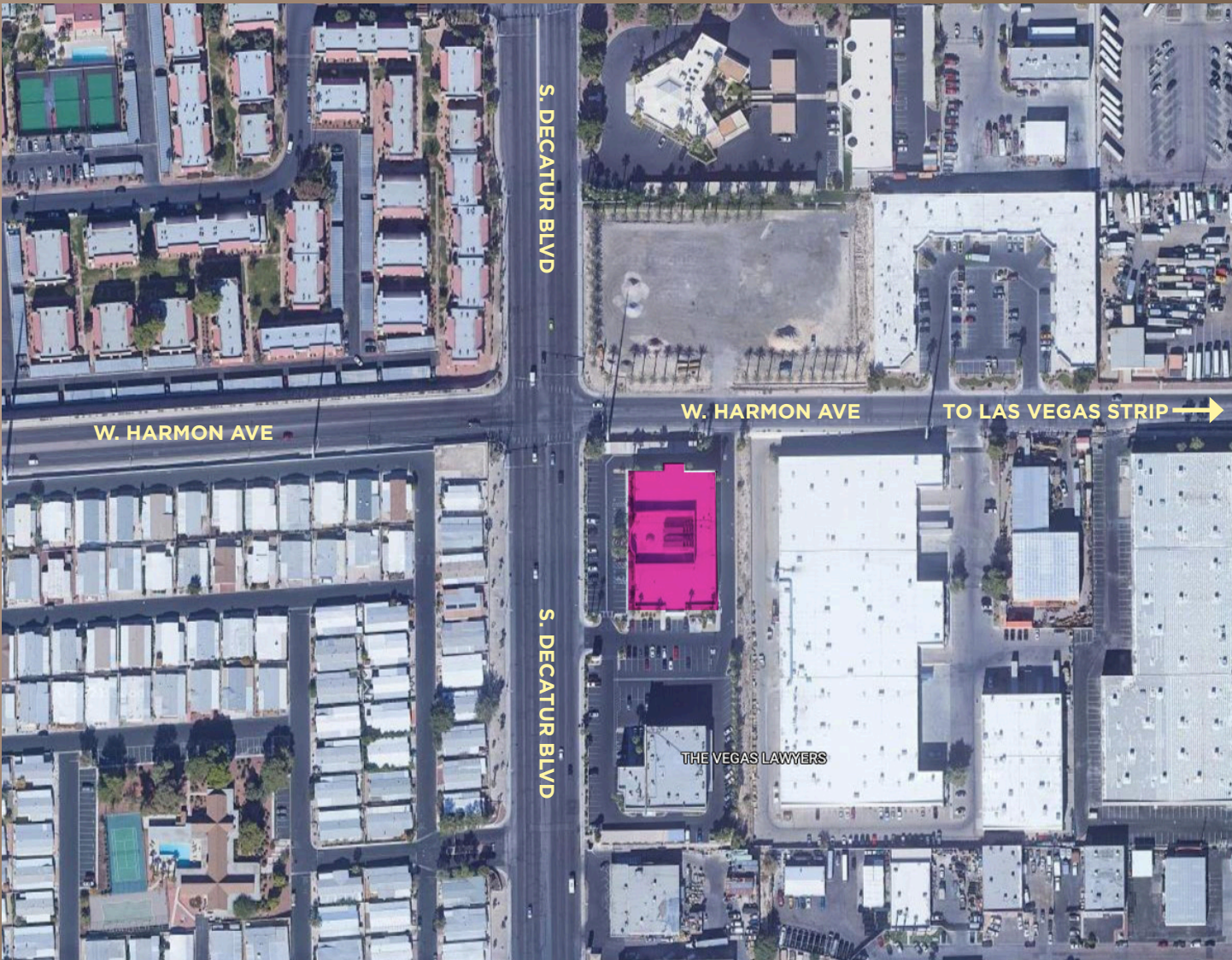


GRIFFIS REALTY INVESTMENTS

Commercial Real Estate Services | Joe Griffis

7381 W Charleston Blvd | Ste 110 | Las Vegas, NV 89117 | T 702.341.0081 | C 702.406.6867



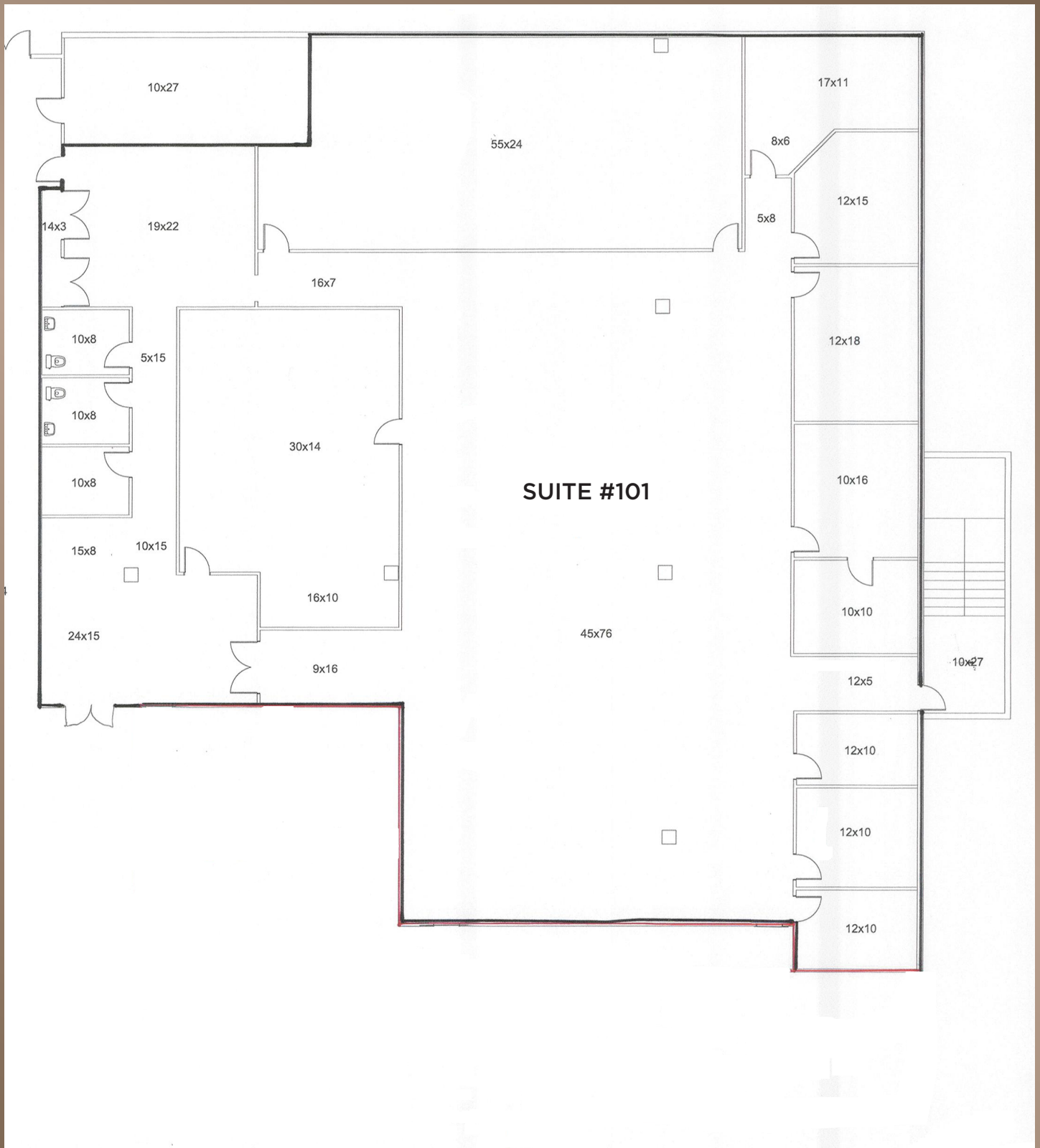


GRIFFIS REALTY INVESTMENTS

Commercial Real Estate Services | Joe Griffis

7381 W Charleston Blvd | Ste 110 | Las Vegas, NV 89117 | T 702.341.0081 | C 702.406.6867





FIRST FLOOR

SUITE #101

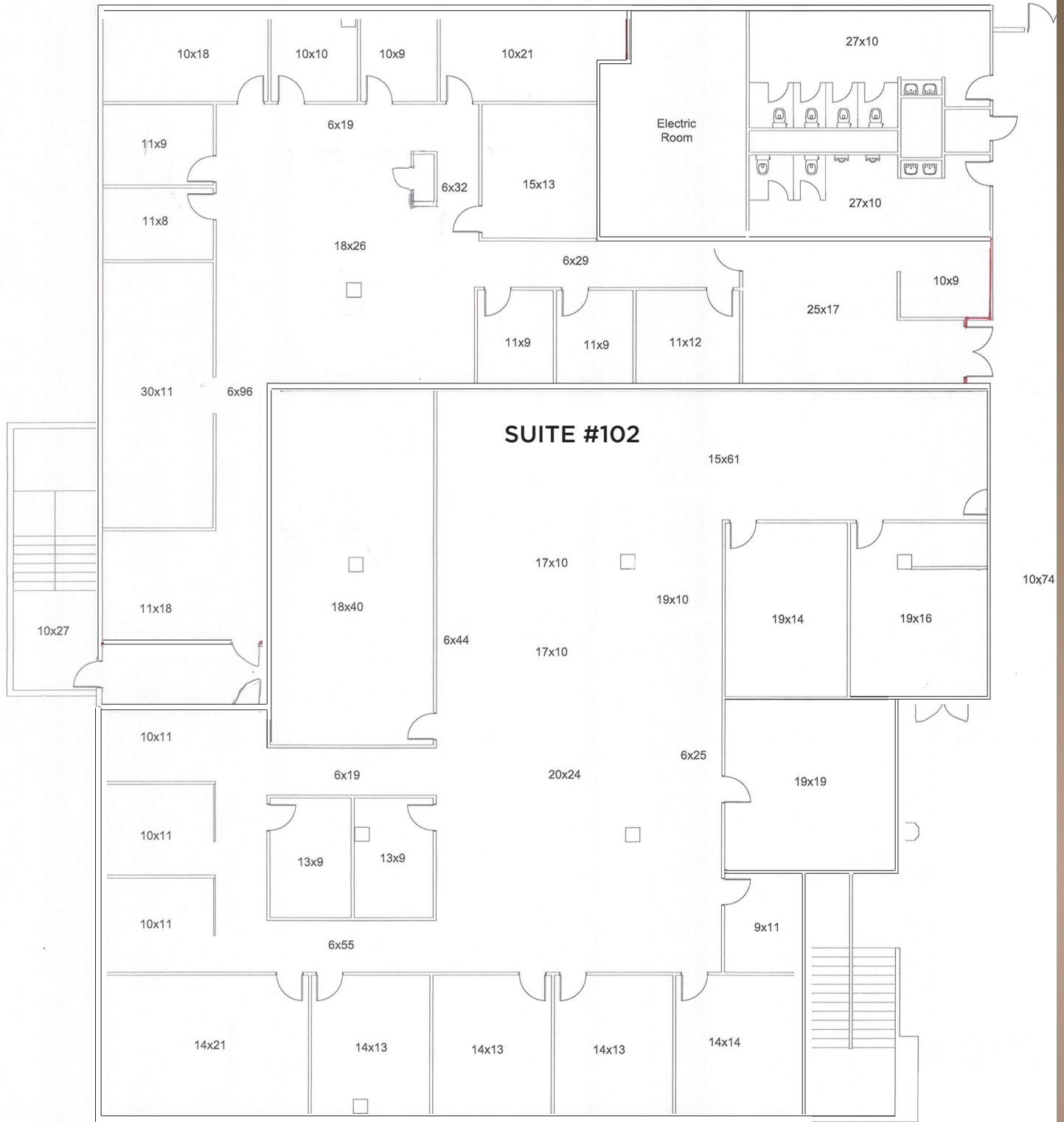
8,840 USF | 10,084 RSF

GRIFFIS REALTY INVESTMENTS

Commercial Real Estate Services | Joe Griffis

7381 W Charleston Blvd | Ste 110 | Las Vegas, NV 89117 | T 702.341.0081 | C 702.406.6867





FIRST FLOOR

SUITE #102

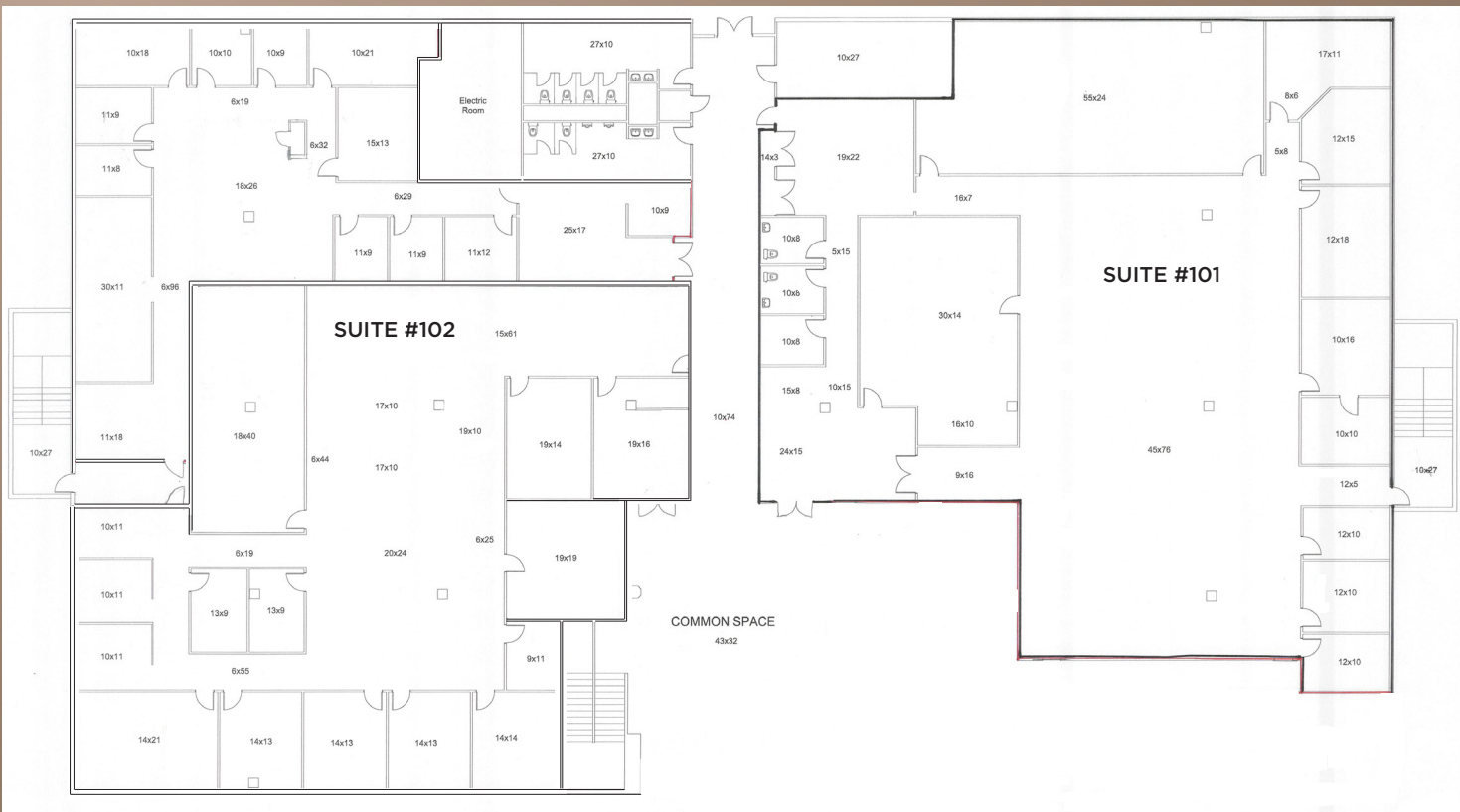
10,354 USF | 11,886 RSF

GRIFFIS REALTY INVESTMENTS

Commercial Real Estate Services | Joe Griffis

7381 W Charleston Blvd | Ste 110 | Las Vegas, NV 89117 | T 702.341.0081 | C 702.406.6867





FIRST FLOOR

SUITE #102

10,354 USF | 11,886 RSF

FIRST FLOOR

SUITE #101

8,840 USF | 10,084 RSF

GRIFFIS REALTY INVESTMENTS

Commercial Real Estate Services | Joe Griffis

7381 W Charleston Blvd | Ste 110 | Las Vegas, NV 89117 | T 702.341.0081 | C 702.406.6867

