

RETAIL SPACE FOR LEASE

2112 W Huntsville Ave | Springdale, AR 72762



JACKSON MOORE

AGENT

📞 479.695.8268 | 📠 501.951.6300

jmoore@kelleycp.com

PHILIP SCHMIDT

AGENT | PARTNER

📞 479.443.8002 | 📠 501.804.4447

pschmidt@kelleycp.com



**KELLEY COMMERCIAL
PARTNERS**

RETAIL SPACE FOR LEASE

2112 W Huntsville Ave | Springdale, AR 72762

AVAILABLE

3,400 SF

PRICE

\$14 NNN

COMMENTS

- Close proximity to I-49 and Hwy 71B
- Located in active retail area
- Near many national and local retailers including Whataburger, Taco Bell, Casey's, Kum & Go, Azul Tequila and Patrick's Burgers
- Excellent visibility with ample parking
- Signage opportunity

DEMOGRAPHICS

	1 MILE	3 MILES	5 MILES	10 MILES
DAYTIME POPULATION	13,803	63,033	111,434	283,559
AVERAGE HH INCOME	\$82,878	\$89,018	\$96,717	\$102,711
TOTAL HH	4,467	20,561	38,099	105,212

TRAFFIC COUNTS

W Huntsville Ave: 22,775 VPD



JACKSON MOORE

AGENT

📞 479.695.8268 | 📠 501.951.6300

jmoore@kelleycp.com

PHILIP SCHMIDT

AGENT | PARTNER

📞 479.443.8002 | 📠 501.804.4447

pschmidt@kelleycp.com



**KELLEY COMMERCIAL
PARTNERS**

RETAIL SPACE FOR LEASE

2112 W Huntsville Ave | Springdale, AR 72762



JACKSON MOORE
AGENT

📞 479.695.8268 | 📠 501.951.6300
jmoore@kelleycp.com

PHILIP SCHMIDT
AGENT | PARTNER

📞 479.443.8002 | 📠 501.804.4447
pschmidt@kelleycp.com



RETAIL SPACE FOR LEASE

2112 W Huntsville Ave | Springdale, AR 72762



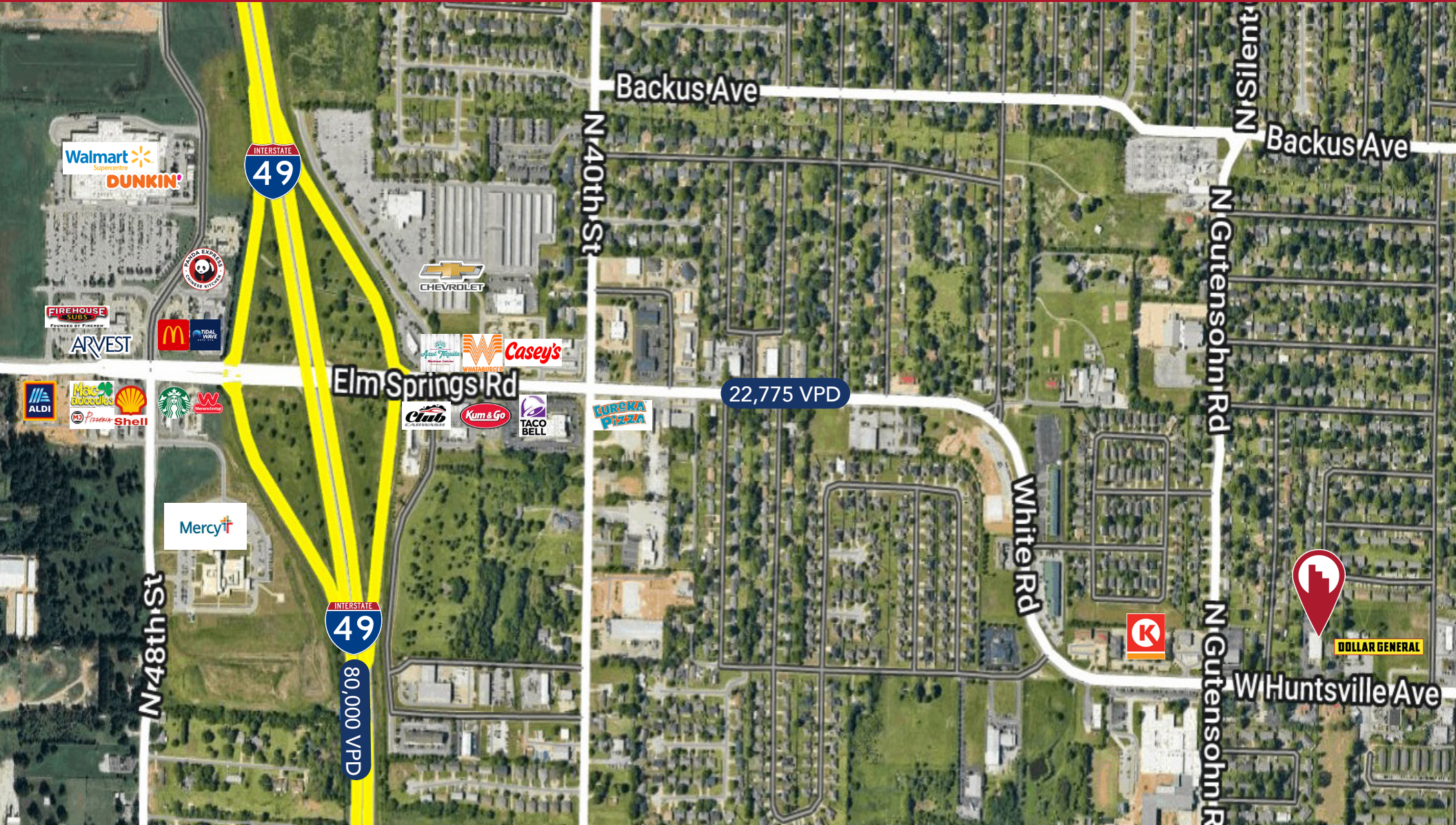
JACKSON MOORE
AGENT
☎ 479.695.8268 | 📠 501.951.6300
jmoore@kelleycp.com

PHILIP SCHMIDT
AGENT | PARTNER
☎ 479.443.8002 | 📠 501.804.4447
pschmidt@kelleycp.com



RETAIL SPACE FOR LEASE

2112 W Huntsville Ave | Springdale, AR 72762



JACKSON MOORE
AGENT

📞 479.695.8268 | 📠 501.951.6300
jmoore@kelleycp.com

PHILIP SCHMIDT
AGENT | PARTNER

📞 479.443.8002 | 📠 501.804.4447
pschmidt@kelleycp.com



**KELLEY COMMERCIAL
PARTNERS**

RETAIL SPACE FOR LEASE

2112 W Huntsville Ave | Springdale, AR 72762



Shoppes at Har-Ber Lakes

- HARPS HOMETOWN FRESH
- SportClips HAIRCUTS
- ANYTIME FITNESS
- Red Hite
- TRAINER'S TABLE
- Smile Shoppe
- Jonsey Mike's SUBS
- tropical SMOOTHIE CAFE
- CARMELITAS
- FN
- BUFFALO WILD WINGS
- Freddy's STEAKBURGERS
- EB
- TACOS 4 LIFE

- Walmart Supercentre
- McDonald's
- WHATABURGER
- PIZZA EXPRESS
- FIREHOUSE SUBS
- Starbucks
- ARVEST
- Casey's
- Club
- TACO BELL
- Kum & Go

- McDonald's
- TACO BELL
- Starbucks
- SONIC
- Waffle House
- AT&T
- Planet Fitness
- Wendy's
- LOWE'S
- HOME 2
- DOUBLE TREE BY HILTON
- Applebee's
- Office DEPOT
- FAIRFIELD Inns & Suites
- SLEEP INN
- ARVEST
- verizon

Har-Ber Crossing

- burn boot camp
- SMOOTHIE KING
- Little Caesars
- SUGARING NYC OFFICIAL SKINCARE STORE
- SEVEN 7 BREW DRIVE THRU COFFEE
- NobiliTea

JACKSON MOORE
AGENT
☎ 479.695.8268 | 📠 501.951.6300
jmoore@kelleycp.com

PHILIP SCHMIDT
AGENT | PARTNER
☎ 479.443.8002 | 📠 501.804.4447
pschmidt@kelleycp.com



ABOUT KELLEY COMMERCIAL PARTNERS

Kelley Commercial Partners is a full-service commercial real estate firm providing the highest caliber of services to owners, investors, landlords, and tenants. We service clients with the focused attention that only a privately-owned local firm can offer. At Kelley Commercial Partners, we take pride in maintaining long-term relationships built on trust, resourcefulness, and reliability.



JACKSON MOORE
AGENT

O 479.695.8268 | M 501.951.6300
jmoore@kelleycp.com



PHILIP SCHMIDT
PARTNER | AGENT

O 479.695.8264 | M 501.804.4447
pschmidt@kelleycp.com

Kelley Commercial Partners is the agent for the owner of the property described herein. All information contained herein is secured from sources we believe to be reliable. However, no information is guaranteed in any way. Any reproduction of this material, in whole or in part is prohibited without prior written consent of Kelley Commercial Partners.

BROKERAGE

PROPERTY MANAGEMENT

DEVELOPMENT MANAGEMENT

CONSULTING

425 W. Capitol Avenue, Suite 300
Little Rock, AR 72201
501.375.3200

4100 Corporate Center Drive, Suite 101
Springdale, AR 72762
479.443.8002



**KELLEY COMMERCIAL
PARTNERS**

kelleycp.com |   

CHAINLINKS
RETAIL ADVISORS