

34401 SCHOOLCRAFT ROAD
LIVONIA, MICHIGAN

INDUSTRIAL FOR SALE OR LEASE

For Sale: 42,720 Square Feet

For Lease: 31,320 Square Feet



**SIGNATURE
ASSOCIATES**
KNOW SIGNATURE | KNOW RESULTS

GREAT MAIN ROAD EXPOSURE



PROPERTY FEATURES

- 31,320 square feet for lease
- 42,720 square feet for sale
- 8,000 square feet office
- 20' clear height
- (3) 12' x 14' grade level doors, (1) truckwell
- (4) 10-ton bridge cranes
- 2000 amps, 480/277 volts power
- 85 parking spaces
- Lease Rate: \$7.75/sq. ft. NNN
- Sale Price: \$4,050,000 (\$94.19/sq. ft.)



For more information, please contact:

STEVE GORDON
(248) 948 0101
sgordon@signatureassociates.com

GARY SALLEN
(248) 948 0105
gsallen@signatureassociates.com

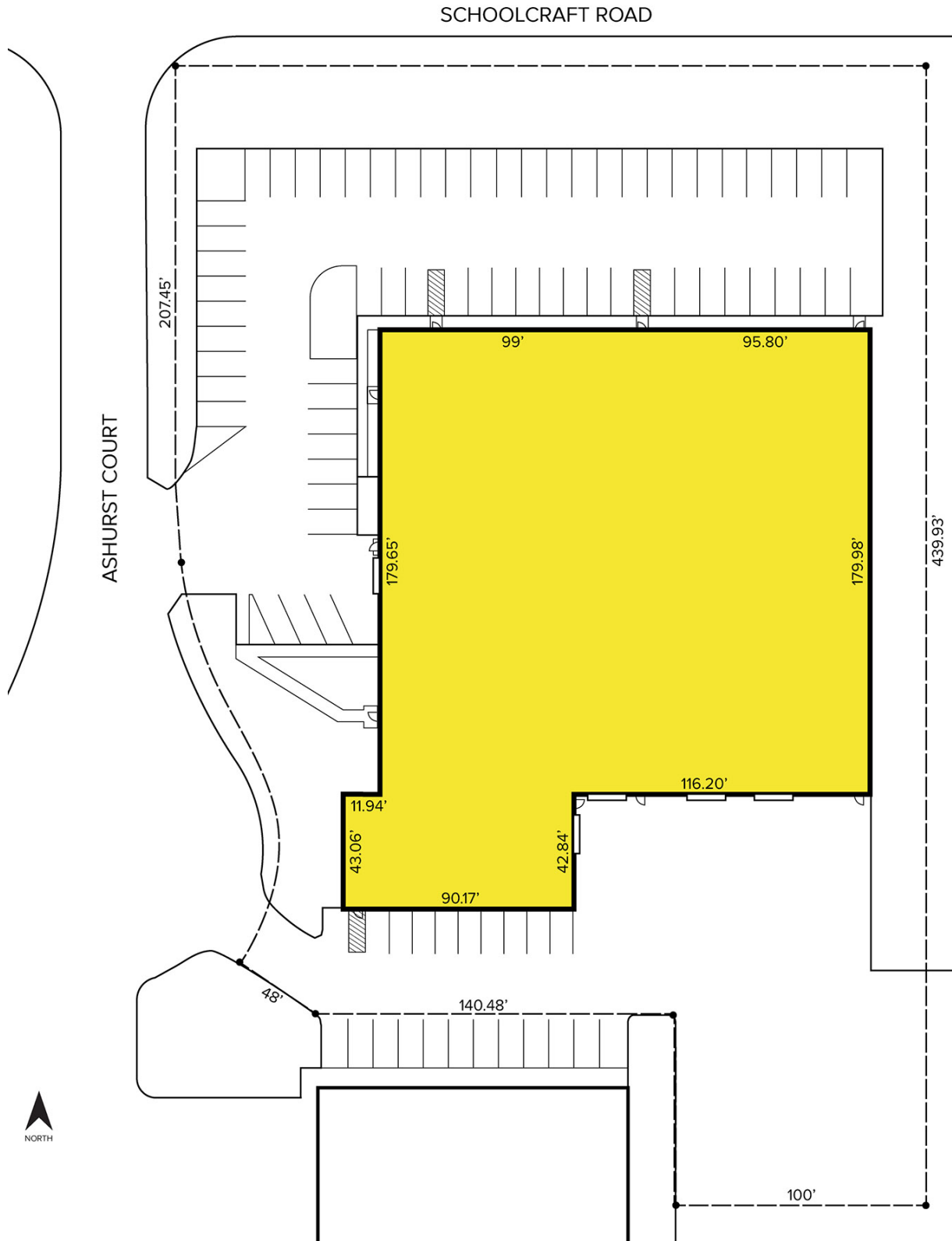
SIGNATURE ASSOCIATES
One Towne Square, Suite 1200
Southfield, MI 48076
www.signatureassociates.com

34401 Schoolcraft Road – Livonia, Michigan

Industrial For Sale or Lease

For Lease –
31,320 SF
For Sale –
42,720 SF

Site Plan



For more information, please contact:

STEVE GORDON
(248) 948 0101
sgordon@signatureassociates.com

GARY SALLEN
(248) 948 0105
gsallen@signatureassociates.com

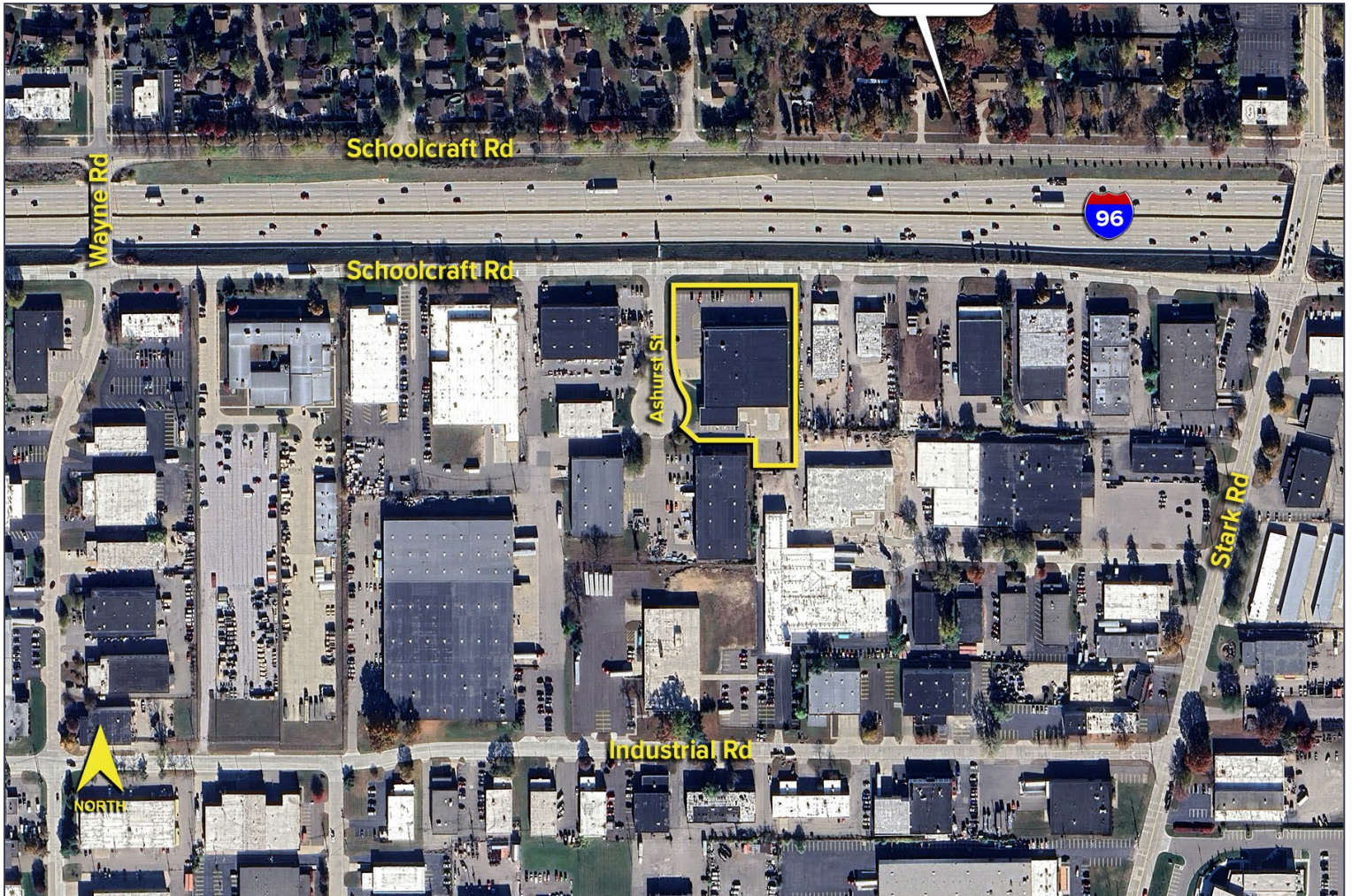
SIGNATURE ASSOCIATES
One Towne Square, Suite 1200
Southfield, MI 48076
www.signatureassociates.com

34401 Schoolcraft Road – Livonia, Michigan

Industrial For Sale or Lease

For Lease –
31,320 SF
For Sale –
42,720 SF

Site Plan



For more information, please contact:

STEVE GORDON
(248) 948 0101
sgordon@signatureassociates.com

GARY SALLEN
(248) 948 0105
gsallen@signatureassociates.com

SIGNATURE ASSOCIATES
One Towne Square, Suite 1200
Southfield, MI 48076
www.signatureassociates.com