

**3 MONTHS
FREE**
WITH 30-MONTH LEASE

EST. 1889

• PARKER •

B L O C K

Single Office Suites For Lease



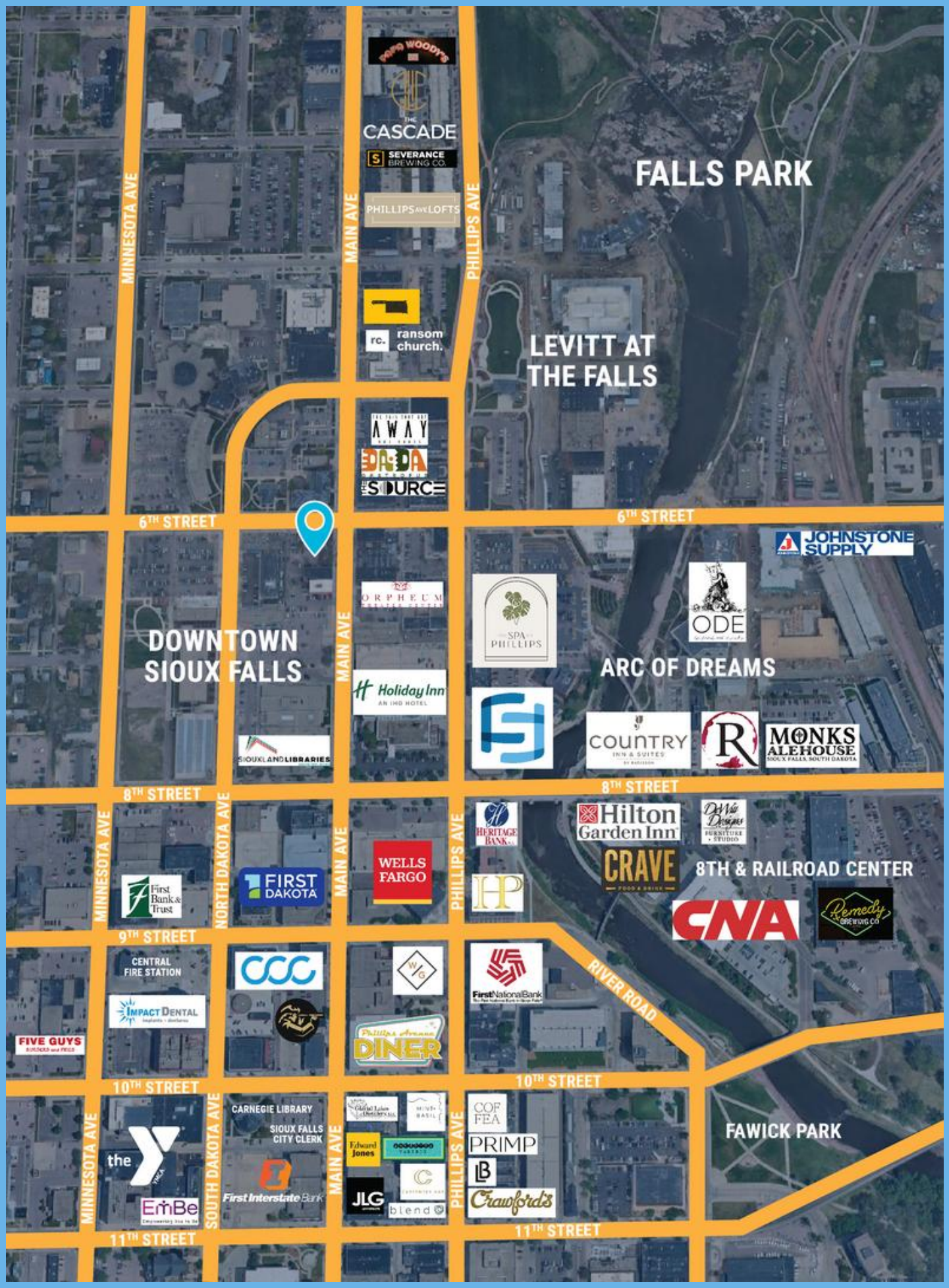
315 North Main Avenue | Downtown Sioux Falls



Lake Lorraine | 2571 S. Westlake Drive #100
Sioux Falls, South Dakota 57106
VBClick.com | 605.361.8211



605.376.0127
Ryan@VBClick.com



FALLS PARK

LEVITT AT THE FALLS

DOWNTOWN SIOUX FALLS

ARC OF DREAMS

8TH & RAILROAD CENTER

FAWICK PARK

MINNESOTA AVE

MAIN AVE

PHILLIPS AVE

6TH STREET

6TH STREET

8TH STREET

8TH STREET

9TH STREET

10TH STREET

11TH STREET

NORTH DAKOTA AVE

MAIN AVE

PHILLIPS AVE

MAIN AVE

PHILLIPS AVE

RIVER ROAD

WOODY'S

THE CASCADE

SEVERANCE BREWING CO.

PHILLIPS AVE LOFTS

ransom church.

AWAY
DISDA
THE SOURCE

JOHNSTONE SUPPLY

ORPHEUM

SPA PHILLIPS

ODE

Holiday Inn
AN IHG HOTEL

Country Inn & Suites
BY IHG

COUNTRY INN & SUITES
BY IHG

MONKS ALEHOUSE
SIOUX FALLS, SOUTH DAKOTA

SIOUXLAND LIBRARIES

First Bank & Trust

FIRST DAKOTA

WELLS FARGO

HERITAGE BANK

Hilton Garden Inn

DeMie Designs
FURNITURE • STUDIO

CRAVE
FOOD & DRINK

CNA

Remedy
BREWING CO.

CENTRAL FIRE STATION

CCC

W/G

First National Bank
First National Bank of South Dakota

FIVE GUYS
BURGERS and FRIES

IMPACT DENTAL
Implants • Dentures

Phillips American
DINER

First National Bank
First National Bank of South Dakota

the Y

CARNEGIE LIBRARY
SIOUX FALLS CITY CLERK

Edward Jones

COP FEA

PRIMP

EmBe
COMMERCIAL REAL ESTATE

First Interstate Bank

JLG

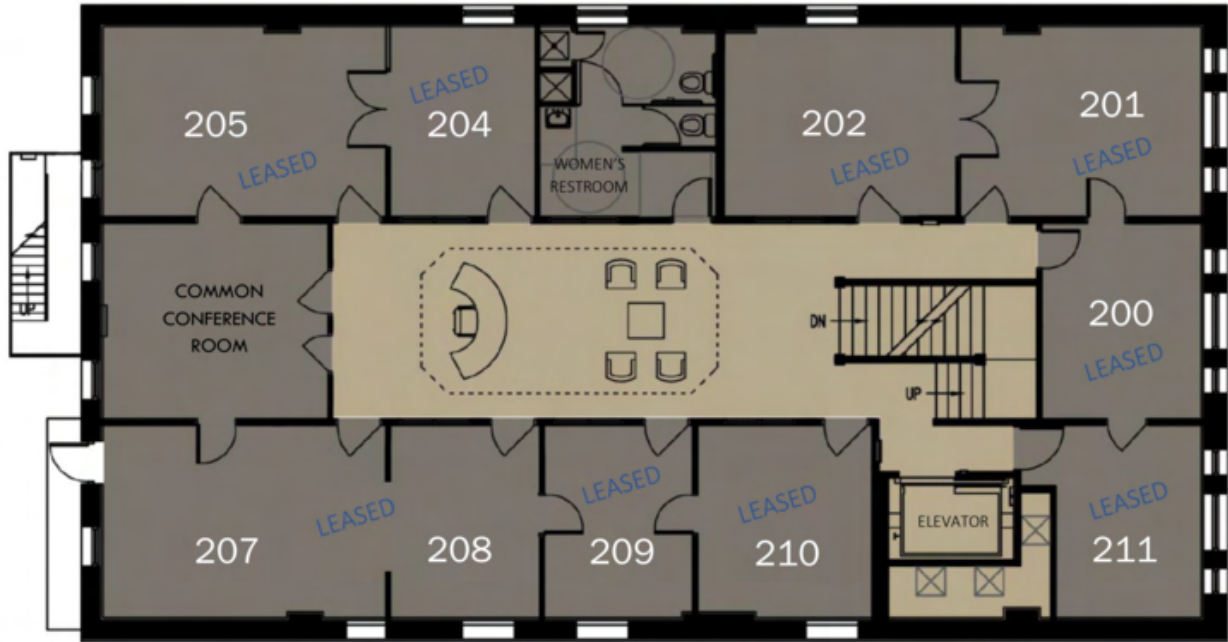
blend

Crawford's

EST. 1889

• PARKER •

B L O C K



2nd FLOOR PLAN



3rd FLOOR PLAN

Suite 300
\$750/mo



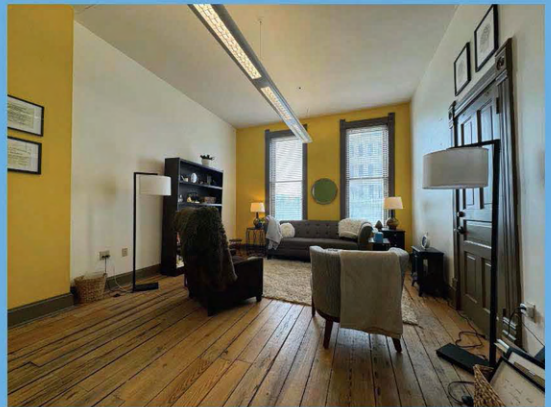
Suite 306
\$400/mo



LEASED



Suite 307
\$750/mo

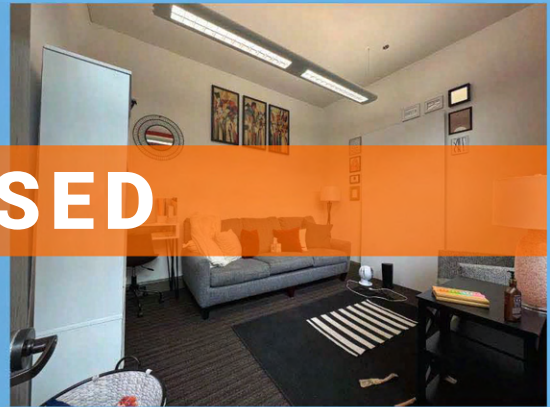


EST. 1889

• PARKER •

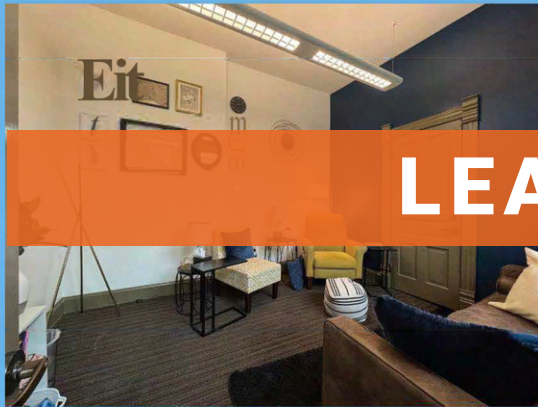
B L O C K

Suite 308
\$450/mo



LEASED

Suite 309
\$450/mo



LEASED

Suite 310
\$450/mo



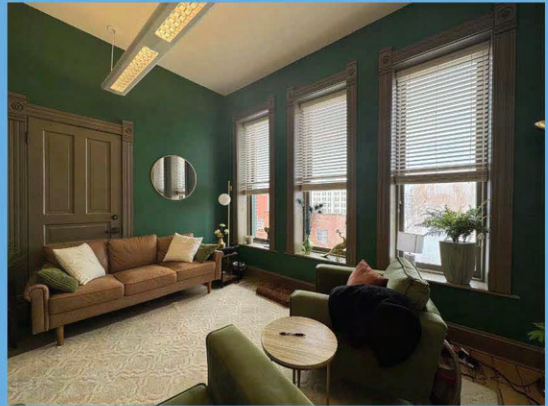
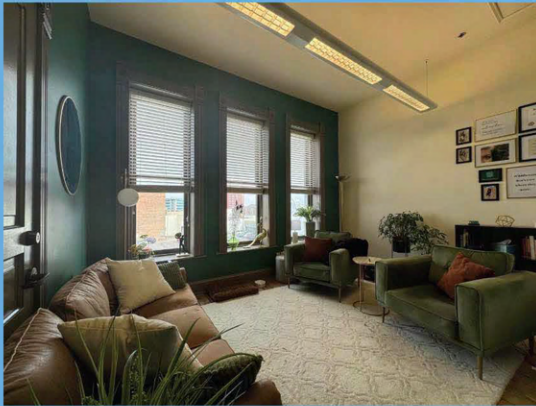
LEASED

EST. 1889

• PARKER •

B L O C K

Suite 312
\$675/mo



Suite 207/208
\$1,100/mo



LEASED



Single Office Suites

EST. 1889

• PARKER •

B L O C K

