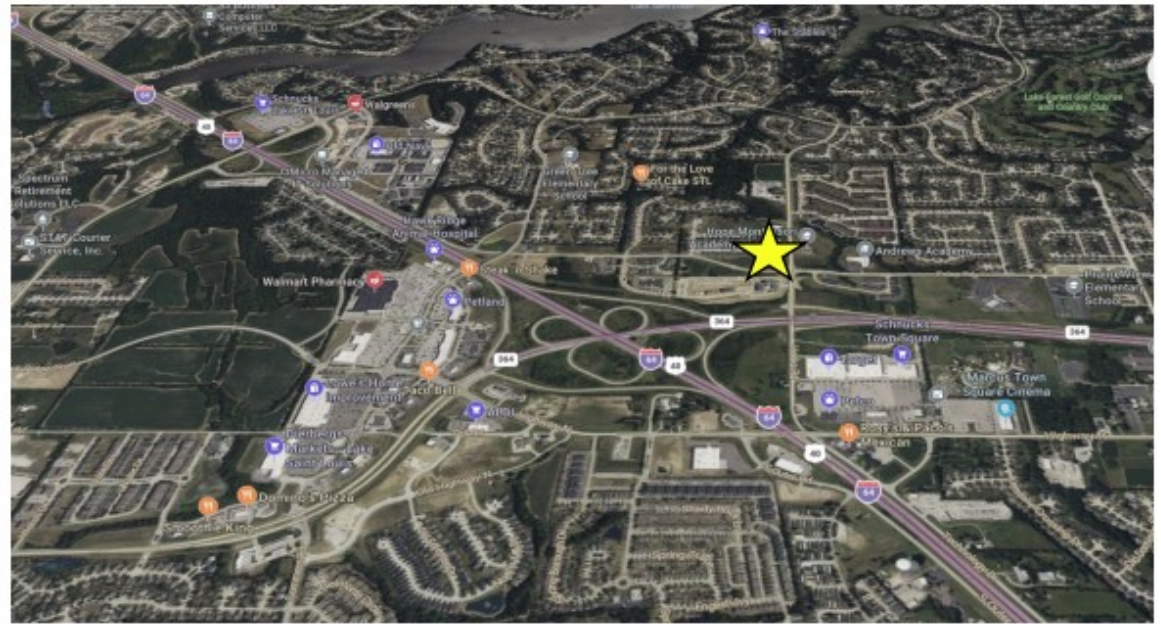
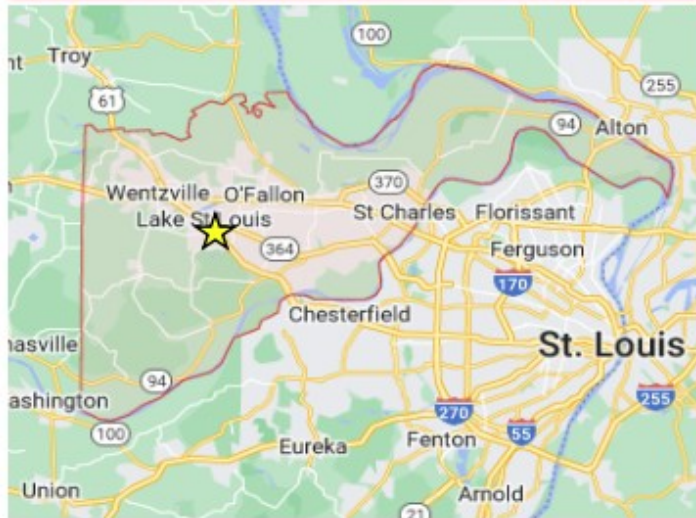


FOR SALE



DEMOGRAPHICS

lake-st-louis-mo-population



2020 Population
20,377



Median Household Income
\$114,230



Median Age
43.5

2022 Traffic MODOT:

64/ Technology Drive est.daily traffic counts exceed 36,382

COMMERCIAL LAND

Technology Drive, Lake St. Louis, MO 63367

CALL FOR PRICING

PROPERTY DETAILS

- Approximately 13 +/- ac for sale in fast growing Lake St. Louis located near new Page Extension
- Divisible
- Zoning - commercial
- Easy access to Highway 64 and 364 Page Extension
- Area retailers include Target, JC Penny, Schnucks, Red Robin Restaurant.
- Located 4.32 miles from MasterCard Headquarters-3000 employees.
- City Land Use Plan includes: Neighborhood Commercial, Highway, Commercial and High Density Residential uses.

This information has been secured from sources we believe to be reliable, but we make no representations or warranties, expressed or implied, as to the accuracy of the information. References to square footage or age are approximate. Buyer must verify the information and bears all risk for any inaccuracies.



Debbie Haley
Haley Properties
314-280-1885
debbie@HaleyPropertiesllc.com



Bill Luetkenhaus
Luetkenhaus Properties, Inc.
636-272-4200 office
636-262-5495 cell

410 Crestview Dr.

PARCELS

Total acreage: 14±



SITE MAP



- Located 4.32 miles from MasterCard Headquarters—3000 employees

TRADE AERIAL MAP



ABOUT LAKE ST. LOUIS , MO

Select Lake St. Louis!

The City of Lake St. Louis is a planned community situated around two lakes between Interstate 70 and Interstate 64 in western St. Charles County, Missouri, United States. The population was 16,707 as of the 2020 US Census.



This information has been secured from sources we believe to be reliable, but we make no representations or warranties, expressed or implied, as to the accuracy of the information. References to square footage or age are approximate. Buyer must verify the information and bears all risk for any inaccuracies.