

12201 BELAIR ROAD, KINGSVILLE, MD 21087-1176

LAND FOR SALE - Unique Development Opportunity in Kingsville



COMMERCIAL ZONED PROPERTY - BL CR

Business Local, Community, Rural

Listing Price: \$1,300,000.00



Property Description:

- **Land: 9.27 Acres**
- **Building: 982 SF (small farm house—tear down)**
- **Over 1000 feet of BelAir Road frontage**
- **Conveniently located in Kingsville Maryland. Approximately 2.5 miles to Fallston and 3.5 miles to Perry Hall**
- **Baltimore County, BL (Business Local) C, R (Commercial, Rural), allows for a variety of commercial office, service and retail uses**
- **Well/Septic**
- **Immediate Availability**

DEMOGRAPHICS:

Population	3 MILE	5 MILE
2019 Total Population:	12,809	64,321
Pop. Growth 2019-2024:	1.98%	1.42%
Average Age:	44.10	41.00
Households		
2019 Total Households:	4,704	23,924
Median Household Income:	\$105,868	\$96,350
Avg. Household Size:	2.70	2.70



CONTACT:

Bill Vanden Eynden
443-528-6782
billv@bcvcommercialrealty.com



1301 York Rd. Suite 208, Lutherville, MD 21093
Ph. 410.296.2626 | Fax 410.296.2660

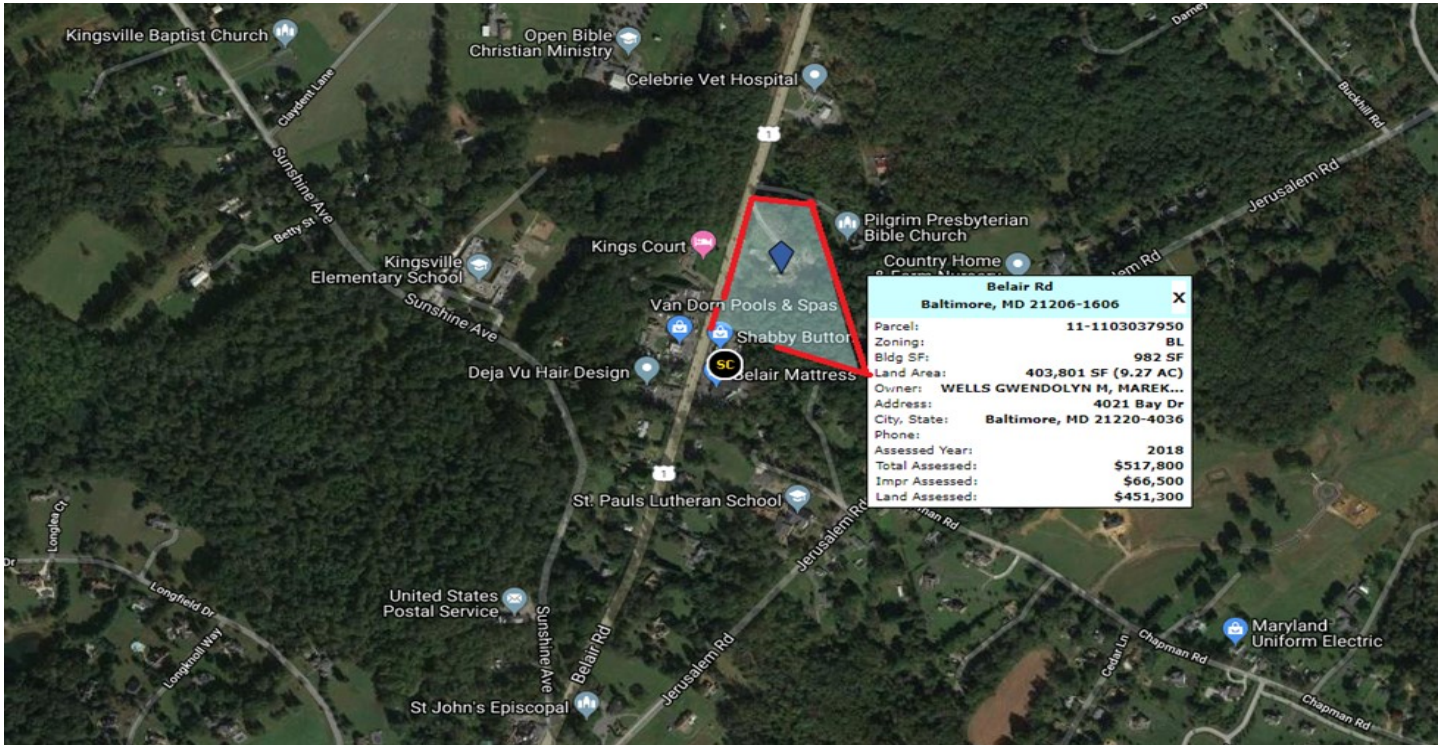
DISCLAIMER: The information provided herein was furnished by Seller indicated above & evidenced by the Exclusive Agreement. Broker makes no representations as to the accuracy or reliability of said information. We recommend financial & legal counsel be available to assist you throughout the transaction due to the significance of this data.

KINGSVILLE, MARYLAND – Connecting Baltimore & Harford Counties



12201 Bel Air Road, Kingsville, MD 21087-1176

Expanded Aerial with Surrounding Amenities



1301 York Rd. Suite 208, Lutherville, MD 21093
Ph. 410.296.2626 | Fax 410.296.2660