

**1750 WEST 500 SOUTH,
SALT LAKE CITY, UT 84104**

AVAILABLE FOR LEASE: 22,000 SF



PROPERTY FEATURES:

22,000 SF

Warehouse: 18,400 SF

Office: 3600 SF

**Loading Doors: Three (3) 10'x14' Grade Level
Doors**

Power: 480 V 3-P 2500 A | 240 V 1-P | 240 V 3-P

Clear Height: 16'

Heating & Cooling: HVAC Throughout Facility

**Access: Excellent Access to Redwood Road,
I-215, and I-80**

IDS

Contact: Mike Drury
(801) 860-6453
mike@unitedmanda.com

**1750 WEST 500 SOUTH,
SALT LAKE CITY, UT 84104**

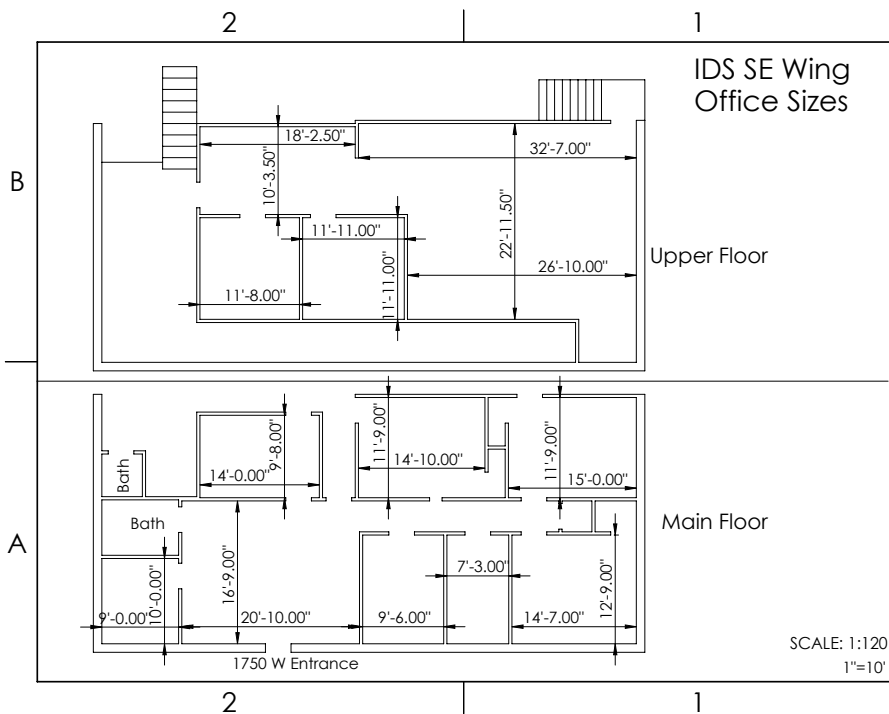
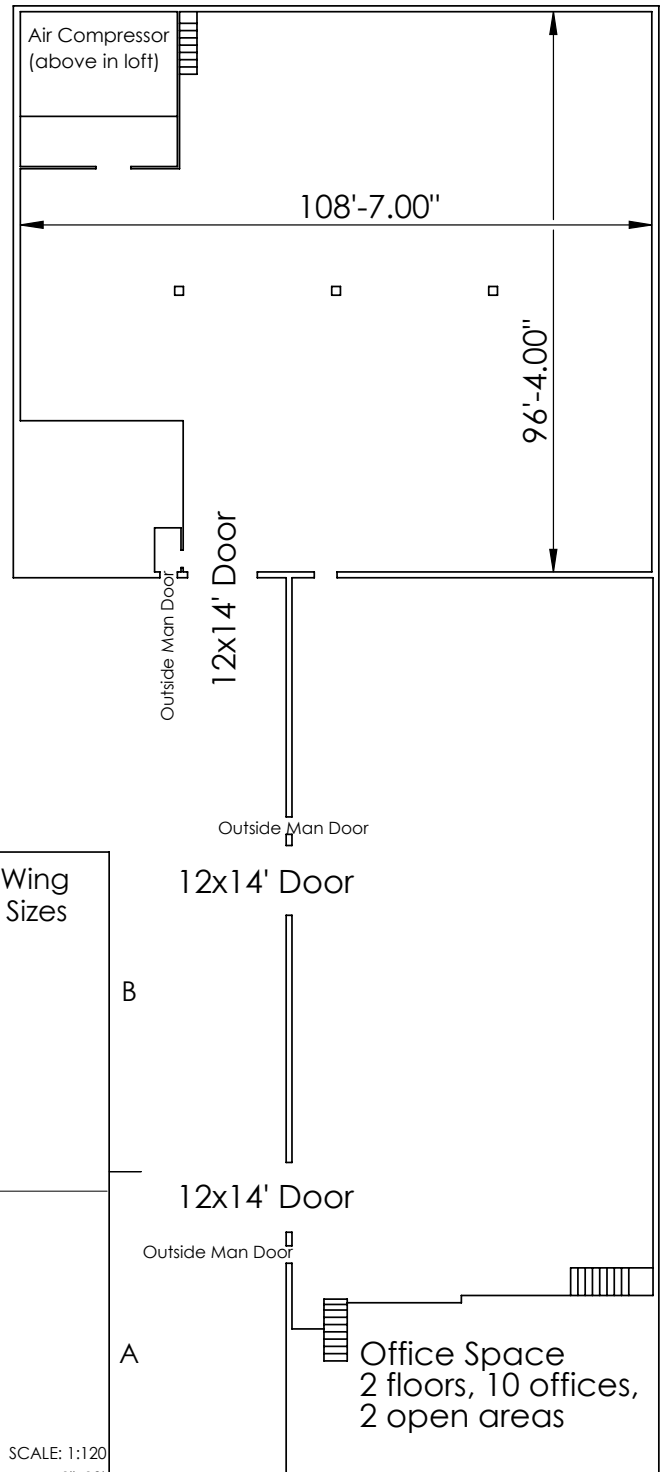
AVAILABLE FOR LEASE: 22,200 SF

**Shop space: 10,600 sq ft
Warehouse space: 7800 sq ft
Office space: 3600 sq ft**

16' clear height to ceiling

**480 V 3-phase, 240V single,
3-phase power available.**

High pressure air available.



IDS

Contact: Mike Drury
(801) 860-6453
mike@unitedmanda.com

**1750 WEST 500 SOUTH,
SALT LAKE CITY, UT 84104**

AVAILABLE FOR LEASE: 22,000 SF



Near Access to Redwood Road, Freeway and Airport

IDS

Contact: Mike Drury
(801) 860-6453
mike@unitedmanda.com