

FOR SALE

4 CINEMARK MULTIPLEX OUTPARCELS



4 OUTPARCELS ON SW CORNER OF ELLSWORTH & CARPENTER ROAD PITTSFIELD TOWNSHIP, MI 48108

PROPERTY HIGHLIGHTS:

- 4 approved outlots for sale surrounding the newly renovated Cinemark Multiplex Theater in Pittsfield Township
- Development located on the SW corner of Ellsworth & Carpenter Road
- Outlots range in size from 1.8- 5.6 acres
- Zoned C-2, allows for a variety of uses
- Theater typically generates over 1,000,000 customers annually
- Contact Broker for Individual Outlot Pricing

The information provided herein along with any attachment(s) was obtained from sources believed to be reliable, however, Friedman Real Estate makes no guarantees, warranties, or representations as to the completeness or accuracy of such information and legal counsel is advised. All information provided is subject to verification and no liability for reliance on such information or errors or omissions is assumed. The presentation of this property is submitted subject to errors, omissions, change of price or conditions, prior sale or lease, or withdrawal without notice. Copyright © 2021 Friedman Real Estate. All rights reserved.

FOR MORE INFORMATION PLEASE CONTACT:



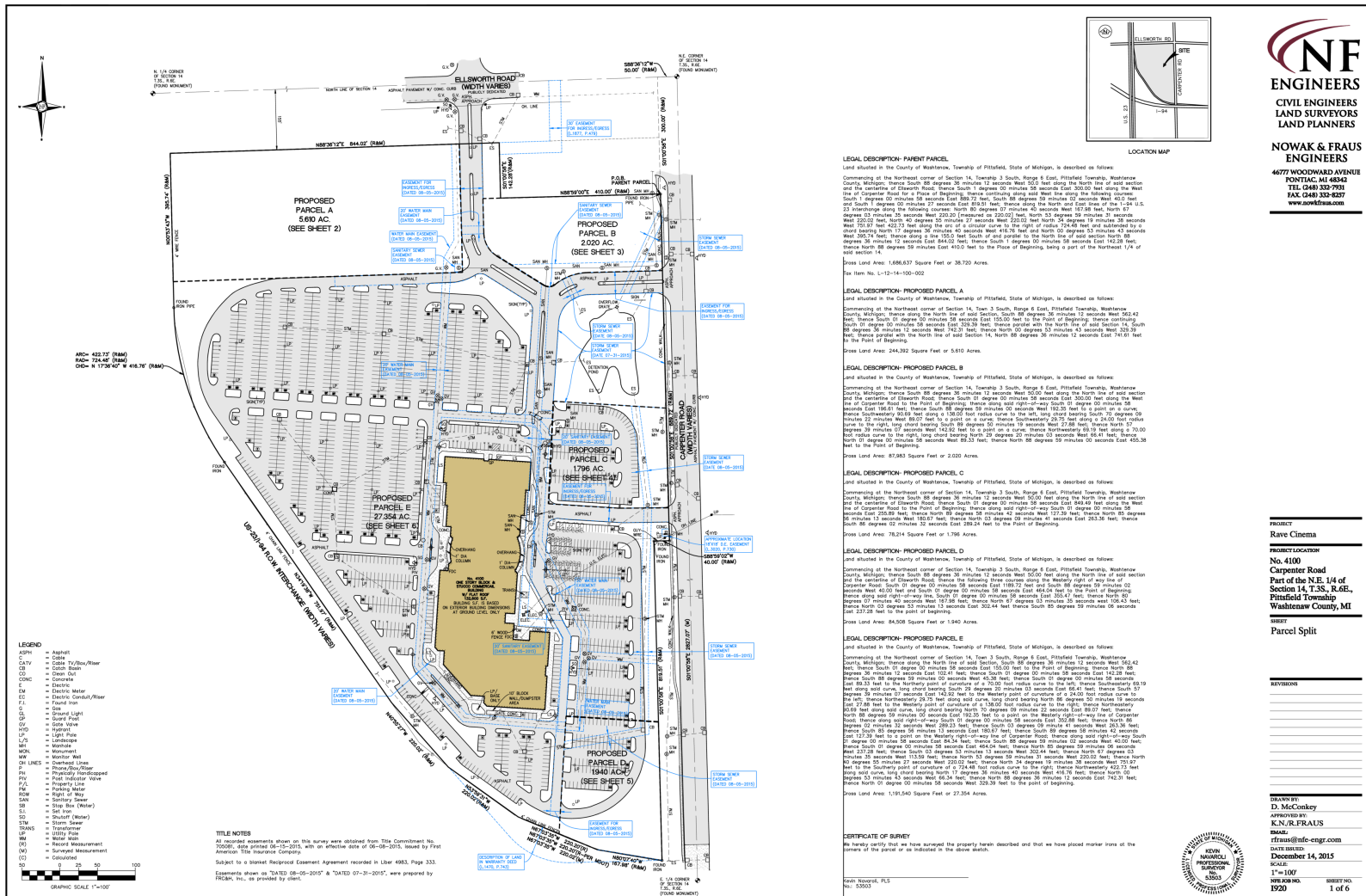
ROBERT HIBBERT
robert.hibbert@freg.com

248.324.2000

eCODE 730



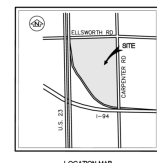
4 CINEMARK MULTIPLEX OUTPARCELS SITE PLAN



ENGINEERS
CIVIL ENGINEERS
LAND SURVEYORS
LAND PLANNERS

NOWAK & FRAUS
ENGINEERS

4677 WOODWARD AVENUE
PONTIAC, MI 48342
TEL: (248) 332-9751
FAX: (248) 333-8257
www.nowakfraus.com



PROJECT
Rave Cinema

PROJECT LOCATION
No. 4100
Carpenter Road
Part of the N.E. 1/4 of
Section 14, T.36, R.6E,
Washtenaw Township,
Washtenaw County, MI

SHEET
Parcel Split

REVISIONS

DRAWN BY:
D. McCauley

APPROVED BY:
K.N./R.FRAUS

DATE:
11/29/13

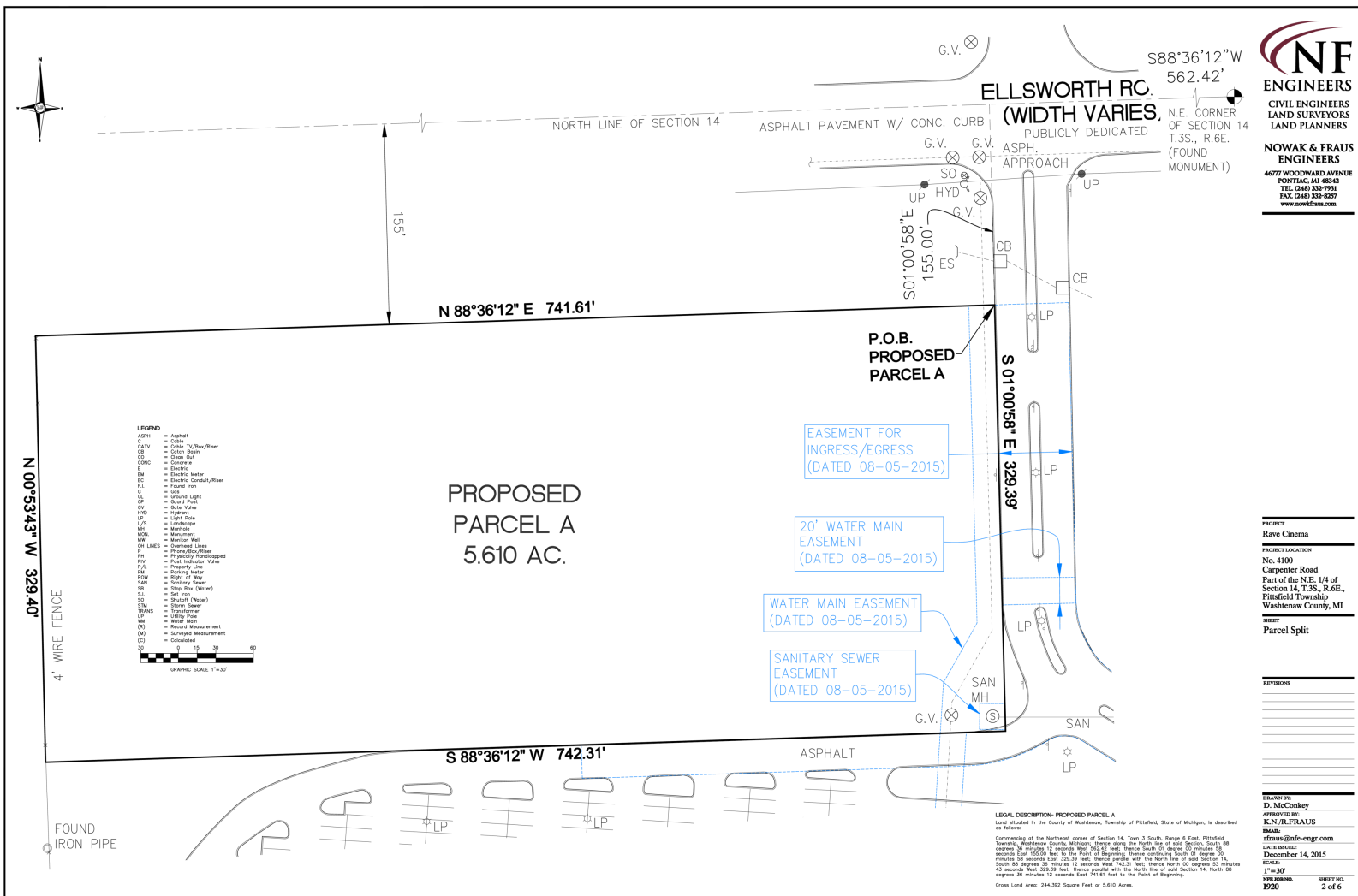
DATE:
December 14, 2015

SCALE:
1" = 100'

INFORM NO.:
1920

SHEET NO.:
1 of 6

4 CINEMARK MULTIPLEX OUTPARCELS SITE PLAN



NF ENGINEERS
CIVIL ENGINEERS
LAND SURVEYORS
LAND PLANNERS

NOWAK & FRAUS ENGINEERS
4677 WOODWARD AVENUE
RONTIC, MI 48042
TEL (248) 333-7903
FAX (248) 333-8857
www.nowakfr.com

