

FOR SALE

RESIDENTIAL TOWER DEVELOPMENT OPPORTUNITY - DOWNTOWN SAN DIEGO



1035 8TH AVENUE, SAN DIEGO, CA 92101



No warranty or representation is made to the accuracy of the foregoing information. Terms of sale or lease and availability are subject to change or withdrawal without notice.

SITE SOURCE

EXECUTIVE SUMMARY

Price: Contact Broker for Pricing

Land: 20,000 SF

Dimensions: 100' Width x 200' Depth

Street Frontage: 8th Avenue & 9th Avenue

Walk Score: Walker's Paradise (99)

APN: 534-184-08-00

Address: 1035 8th Avenue, San Diego

Zoning Designation: CCPD-NC

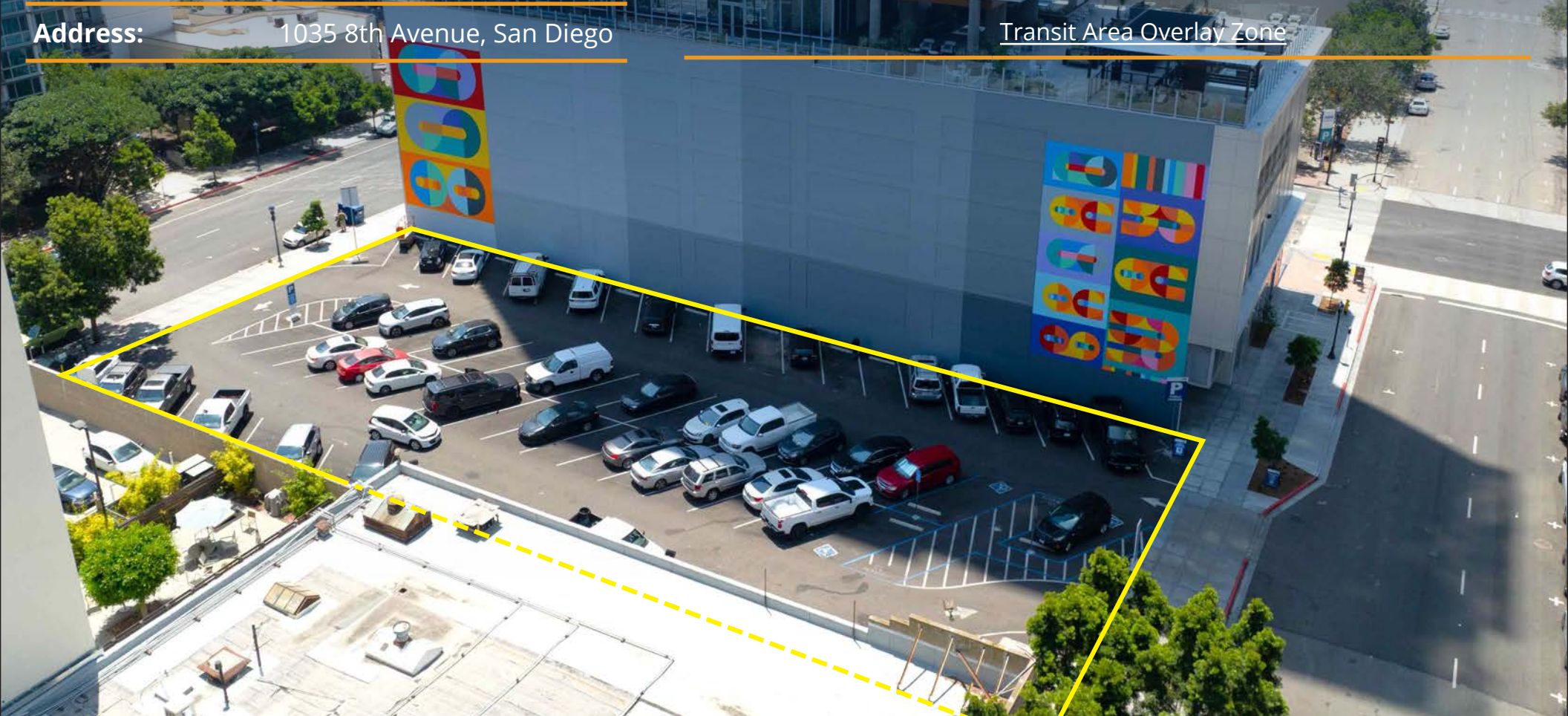
Centre City Planned District

Neighborhood Mixed Use Center

Complete Communities: Yes, FAR Tier 1

Overlay Zones: Airport Land Use Compatibility (Review Area 2)

Transit Area Overlay Zone



PROPERTY HIGHLIGHTS

RESIDENTIAL TOWN DEVELOPMENT OPPORTUNITY

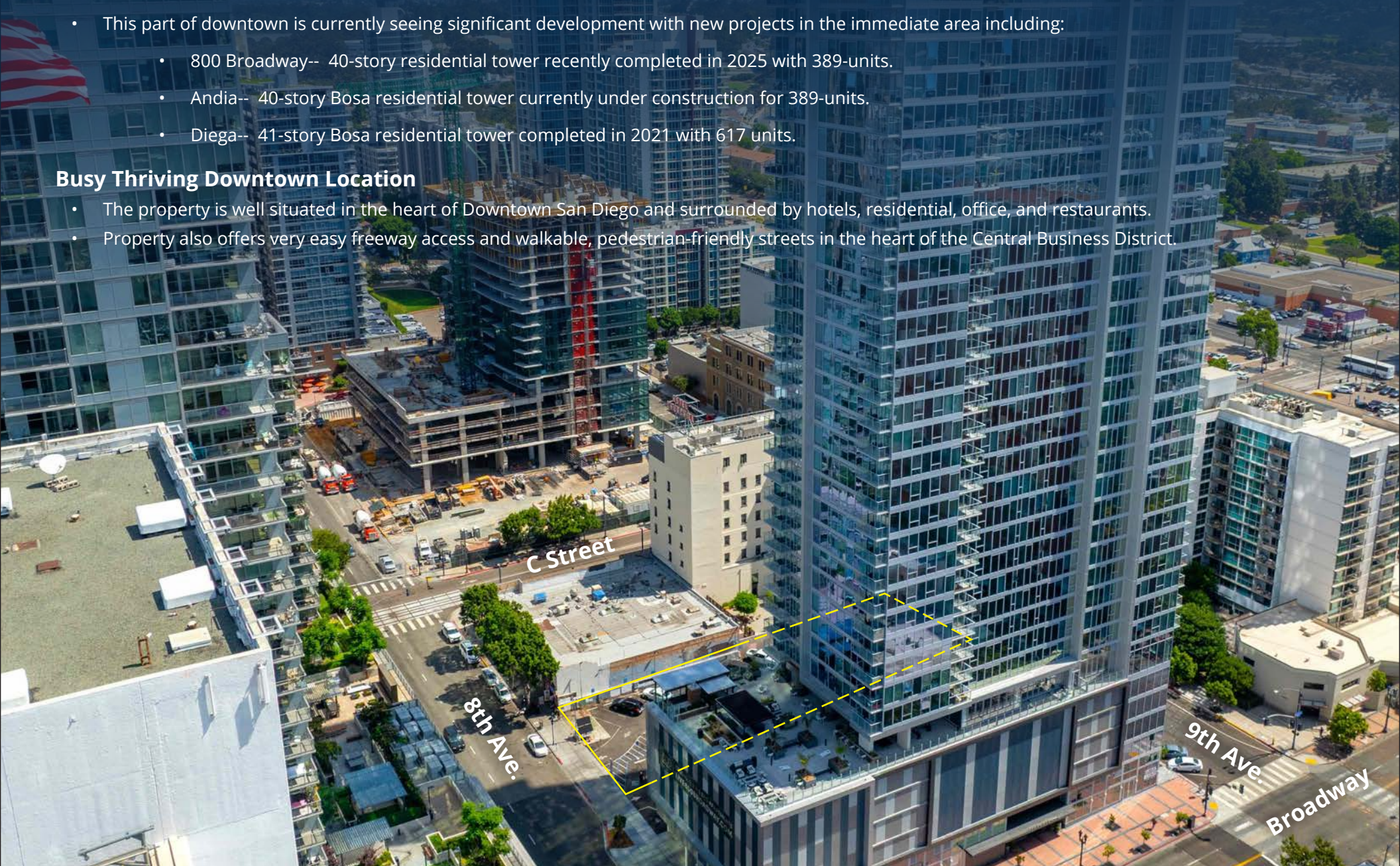
1035 8th Avenue, San Diego, CA 92101

Tower Development Opportunity

- The property presents an excellent opportunity for ground up construction of a potential 40-story residential tower in Downtown San Diego.
- This part of downtown is currently seeing significant development with new projects in the immediate area including:
 - 800 Broadway-- 40-story residential tower recently completed in 2025 with 389-units.
 - Andia-- 40-story Bosa residential tower currently under construction for 389-units.
 - Diega-- 41-story Bosa residential tower completed in 2021 with 617 units.

Busy Thriving Downtown Location

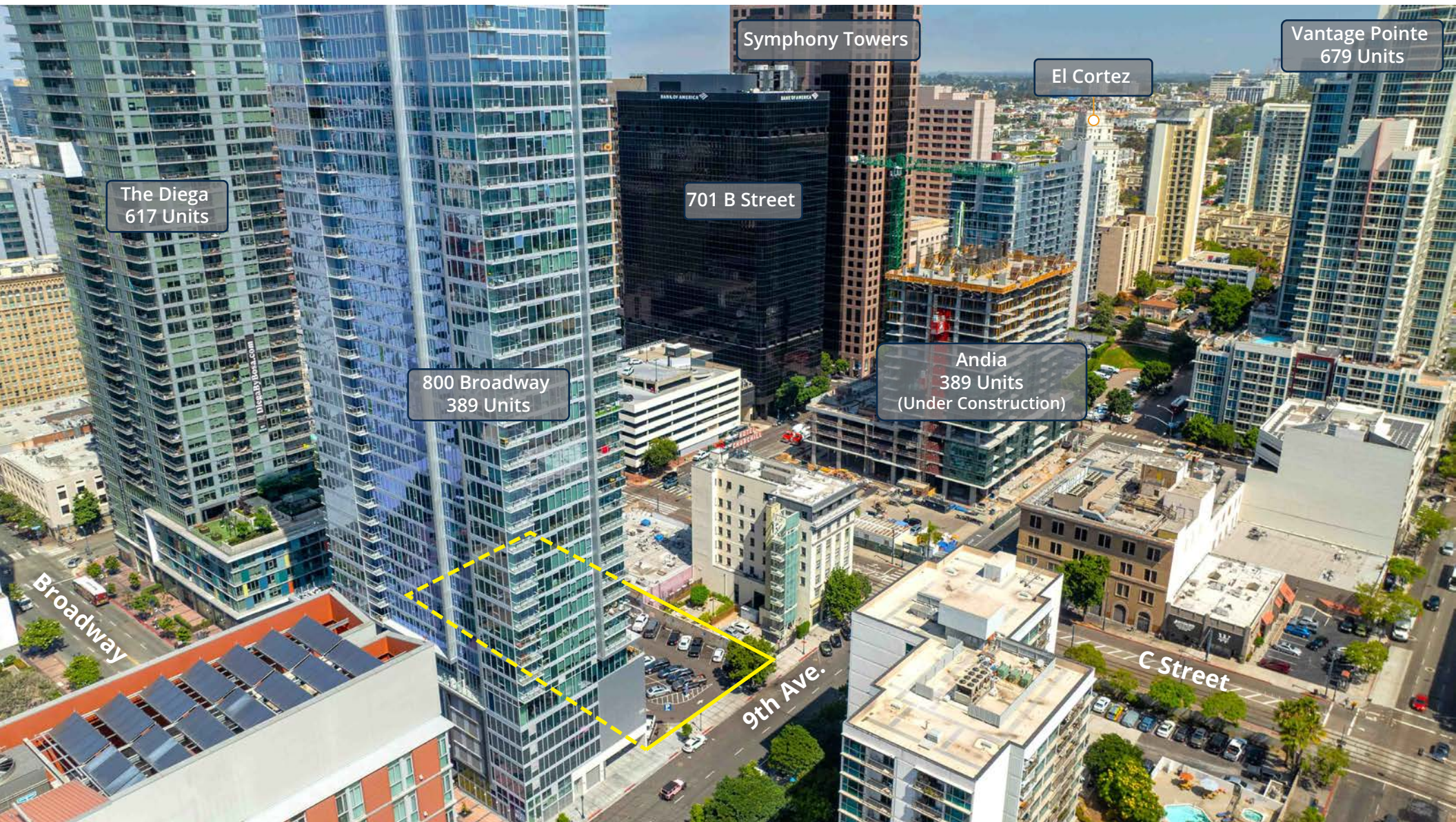
- The property is well situated in the heart of Downtown San Diego and surrounded by hotels, residential, office, and restaurants.
- Property also offers very easy freeway access and walkable, pedestrian-friendly streets in the heart of the Central Business District.

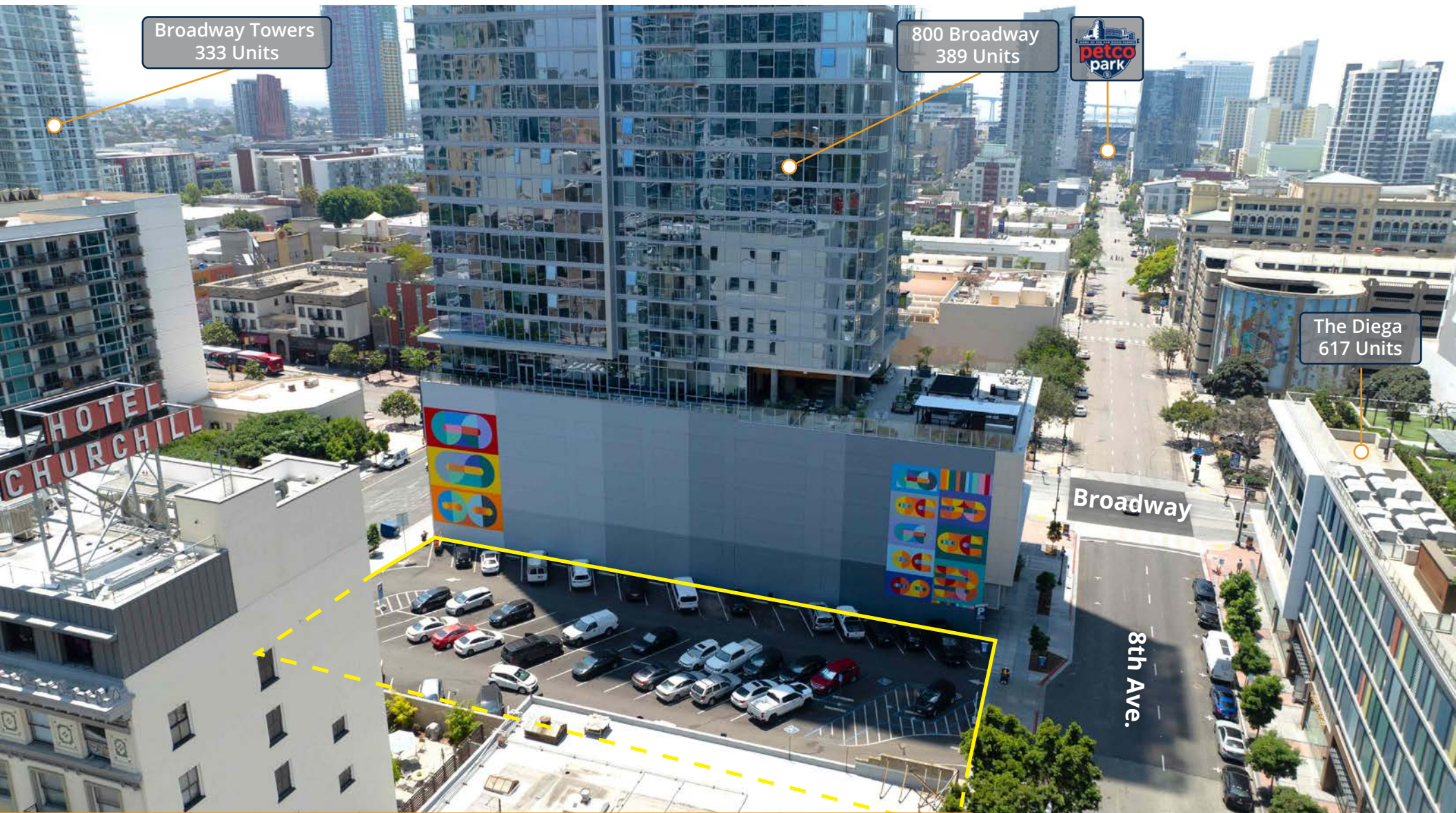


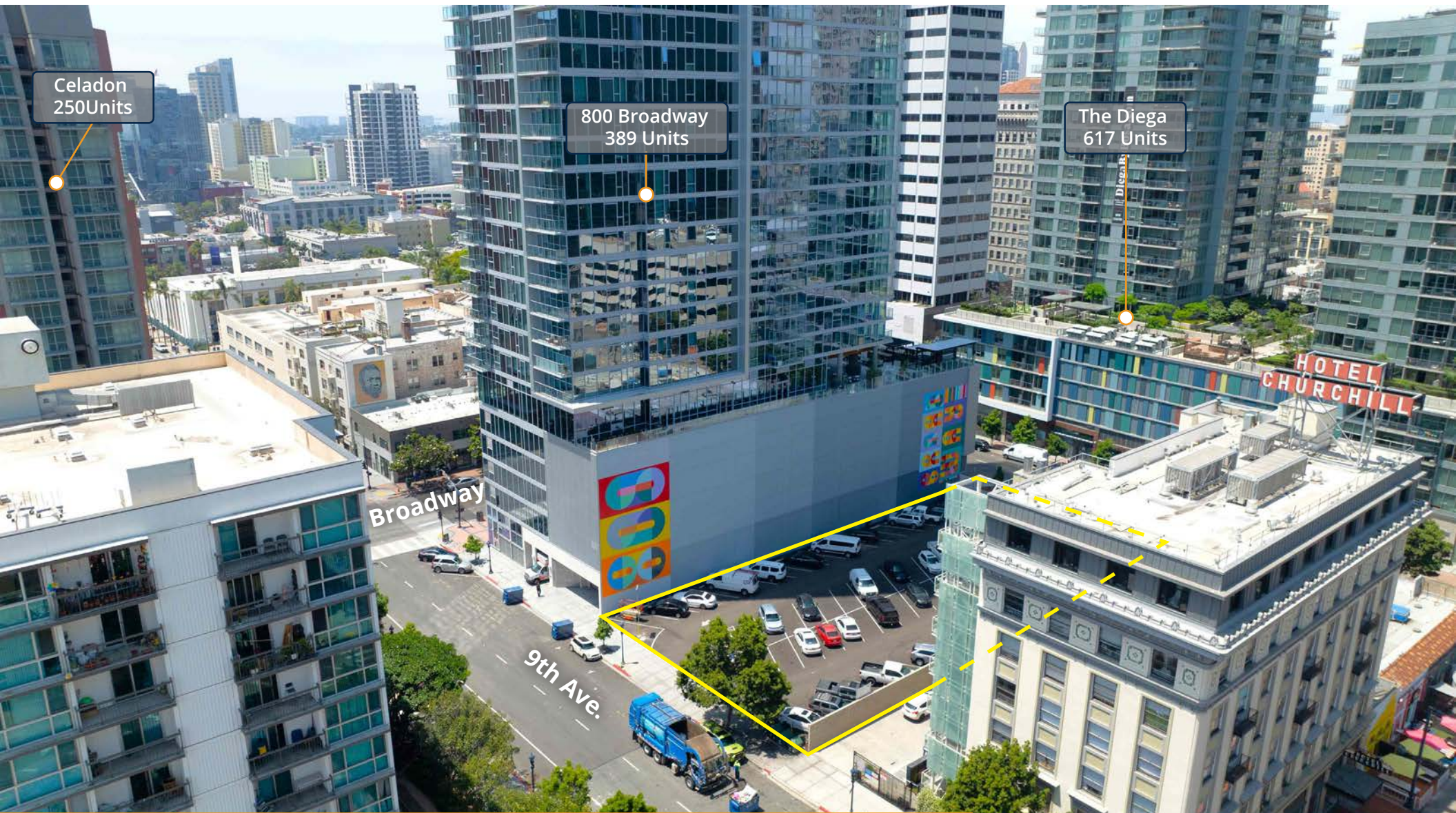
PROPERTY HIGHLIGHTS

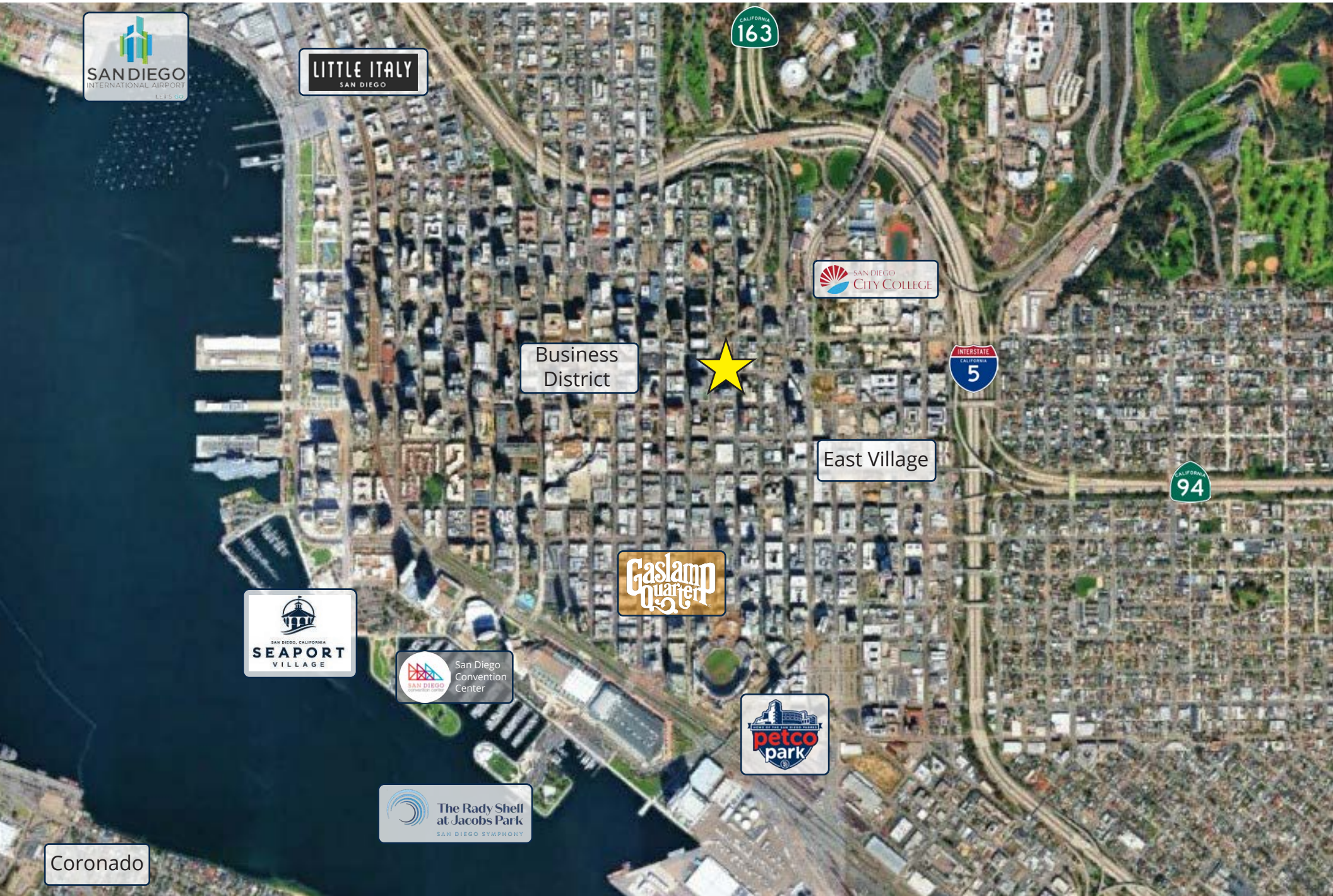
RESIDENTIAL TOWN DEVELOPMENT OPPORTUNITY

1035 8th Avenue, San Diego, CA 92101





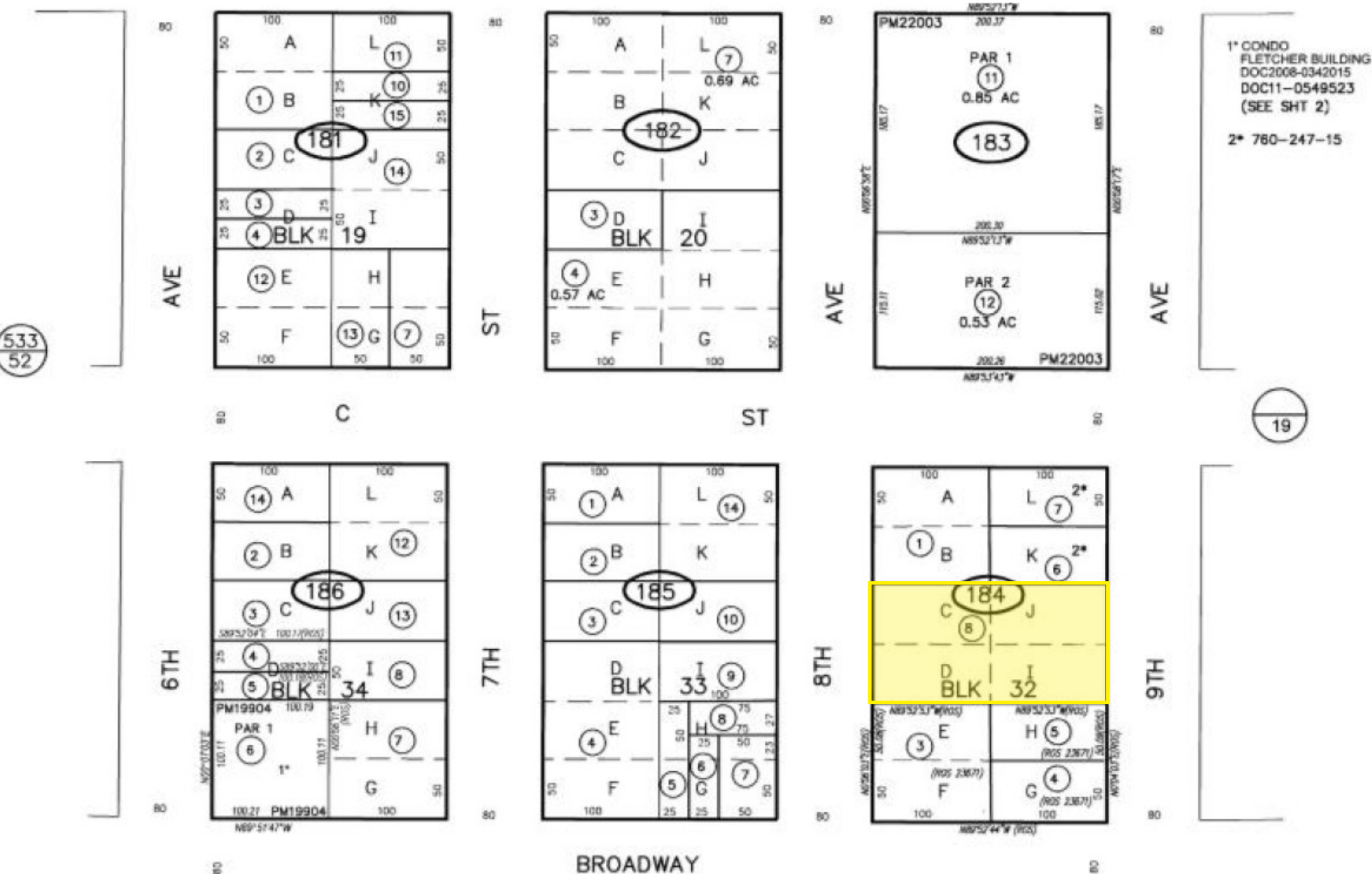




PARCEL MAP

RESIDENTIAL TOWN DEVELOPMENT OPPORTUNITY

1035 8th Avenue, San Diego, CA 92101



RESIDENTIAL TOWER DEVELOPMENT OPPORTUNITY

1035 8TH AVENUE, SAN DIEGO, CA 92101



Contact

Rob Bloom

(858) 405-5342

Rob@DuhsCommercial.com

DRE# 01302163

Austin Dias

(619) 269-6077

Austin@DuhsCommercial.com

DRE# 01888482



BROKERAGE • INVESTMENT • DEVELOPMENT

No warranty or representation is made to the accuracy of the foregoing information. Terms of sale or lease and availability are subject to change or withdrawal without notice.