

Industrial | For Lease

CBRE

6020 Powell Road, Gibsonton, FL 33534

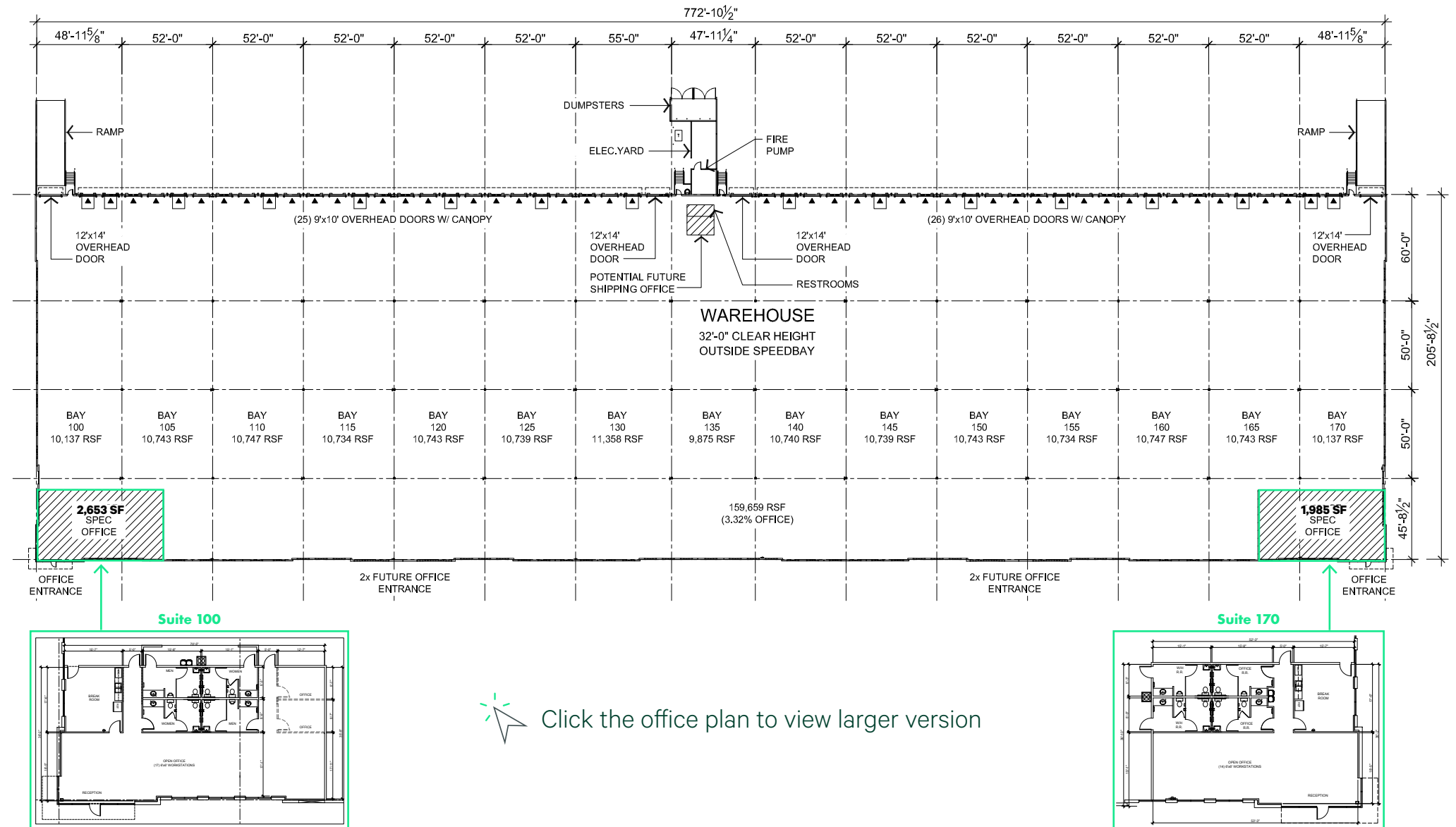
STAG
INDUSTRIAL

20,000 - 160,000 SF Available Now

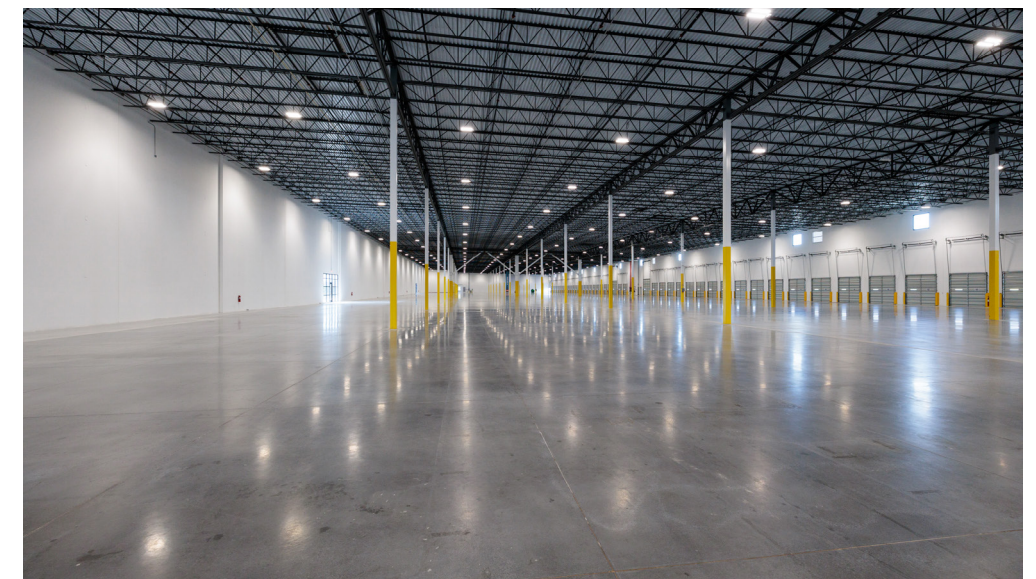


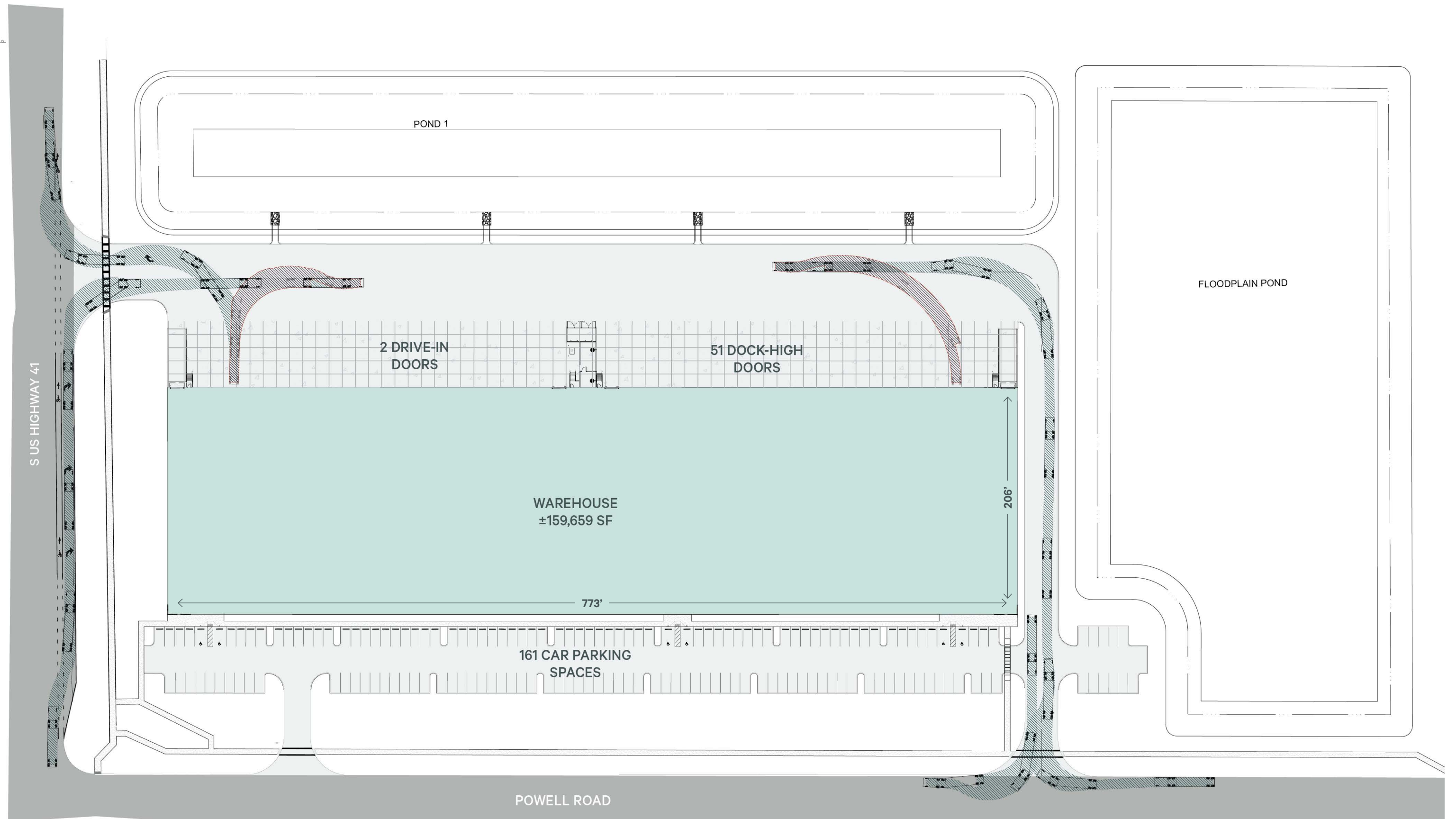
Building Specifications

- + **Building Size:** 160,000 SF
- + **Clear Height:** 32' at the first column line
- + **Building Dimensions:** 206' (D) x 773' (W), excludes drip line
- + **Bay Spacing:** 52' (D) x 50' (W), 60' speed bay
- + **Automobile Parks:** 161 spaces, light-duty asphalt paving
- + **Fire Protection:** ESFR
- + **Electrical Service:** 2,300A, 480V, 3-phase
- + **Dock-High Doors:** 51 (9' x 10') with vision panels
 - 16 dock packages with 35,000 LB levelers
- + **Drive-In Doors:** 2 (12' x 14') oversized, 1 on each end
- + **Spec Office:** 1,985 - 2,653 SF
- + **LEED Certified**
- + **LED Lighting**

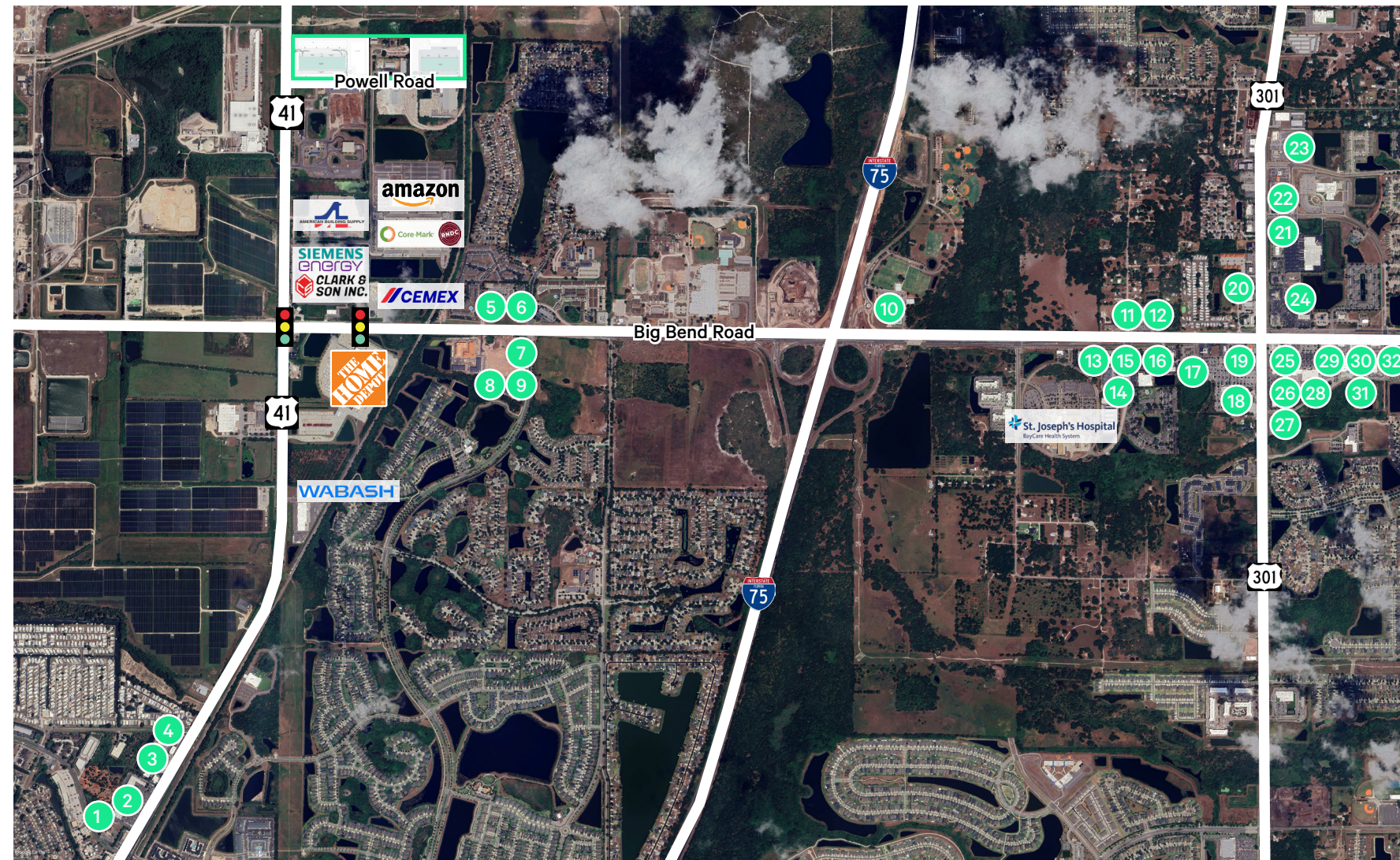


[Click the office plan to view larger version](#)

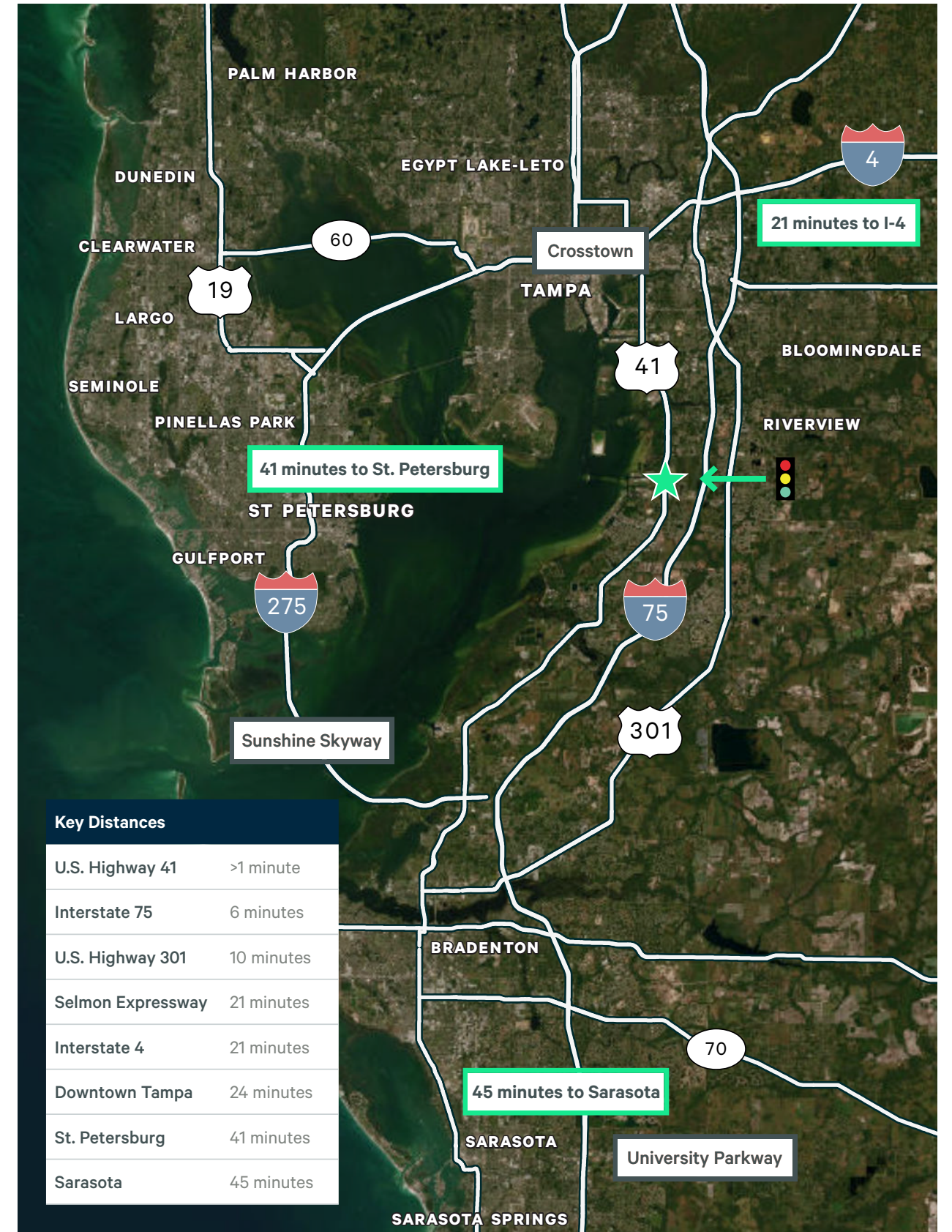




Locational Benefits



- | | | | |
|--------------------------|-----------------------|--------------------------------|---------------------------------|
| 1 Beef O' Bradys | 9 Publix | 17 Walmart Neighborhood Market | 25 Popeyes |
| 2 Publix | 10 YMCA | 18 Sam's Club | 26 Panera Bread |
| 3 Tijuana Flats | 11 Aldi | 19 PDQ | 27 Buffalo Wild Wings |
| 4 First Watch | 12 Glory Days Grill | 20 Qdoba | 28 Winn Dixie |
| 5 Circle K | 13 Jersey Mike's Subs | 21 Wawa | 29 Culver's |
| 6 McDonald's | 14 Take 5 Oil Change | 22 Chick-fil-a | 30 Bubble Down Car Wash |
| 7 Starbucks | 15 Applebee's | 23 Sprouts Farmers Market | 31 Fairfield Inn & Suites |
| 8 Tropical Smoothie Cafe | 16 Village Inn | 24 Publix | 32 Maple Street Biscuit Company |



Key Distances	
U.S. Highway 41	>1 minute
Interstate 75	6 minutes
U.S. Highway 301	10 minutes
Selmon Expressway	21 minutes
Interstate 4	21 minutes
Downtown Tampa	24 minutes
St. Petersburg	41 minutes
Sarasota	45 minutes

6020 Powell Road | Gibsonton, FL 33534
Building 100

For Lease



Contact Us

Kris Courier
Senior Vice President
+1 813 220 4688
kris.courier@cbre.com

Rian Smith, SIOR
Senior Vice President
+1 813 380 7388
rian.smith@cbre.com

© 2025 CBRE, Inc. All rights reserved. This information has been obtained from sources believed reliable, but has not been verified for accuracy or completeness. You should conduct a careful, independent investigation of the property and verify all information. Any reliance on this information is solely at your own risk. CBRE and the CBRE logo are service marks of CBRE, Inc. All other marks displayed on this document are the property of their respective owners, and the use of such logos does not imply any affiliation with or endorsement of CBRE. Photos herein are the property of their respective owners. Use of these images without the express written consent of the owner is prohibited.

