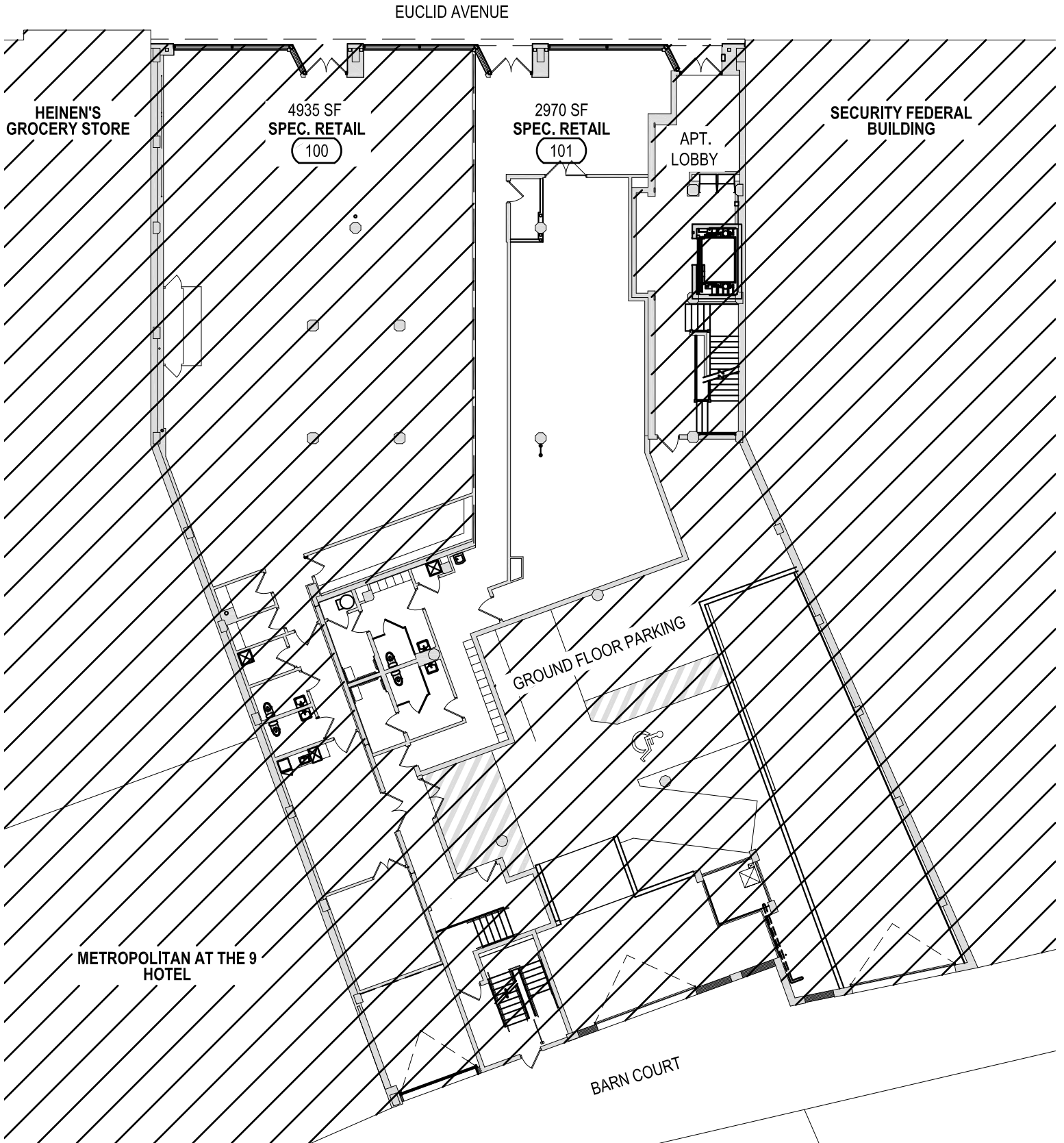


This information has been secured from sources we believe are reliable, but we make no representations or warranties, expressed or implied, as to the accuracy of the information. References to condition, square footage or age are approximate. Buyer or Tenant acknowledges that they are relying on their own investigations and are not relying on provided reference information.

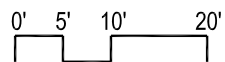


1026 EUCLID AVENUE
CLEVELAND, OHIO 44115

THE IVORY ON EUCLID



FIRST FLOOR PLAN

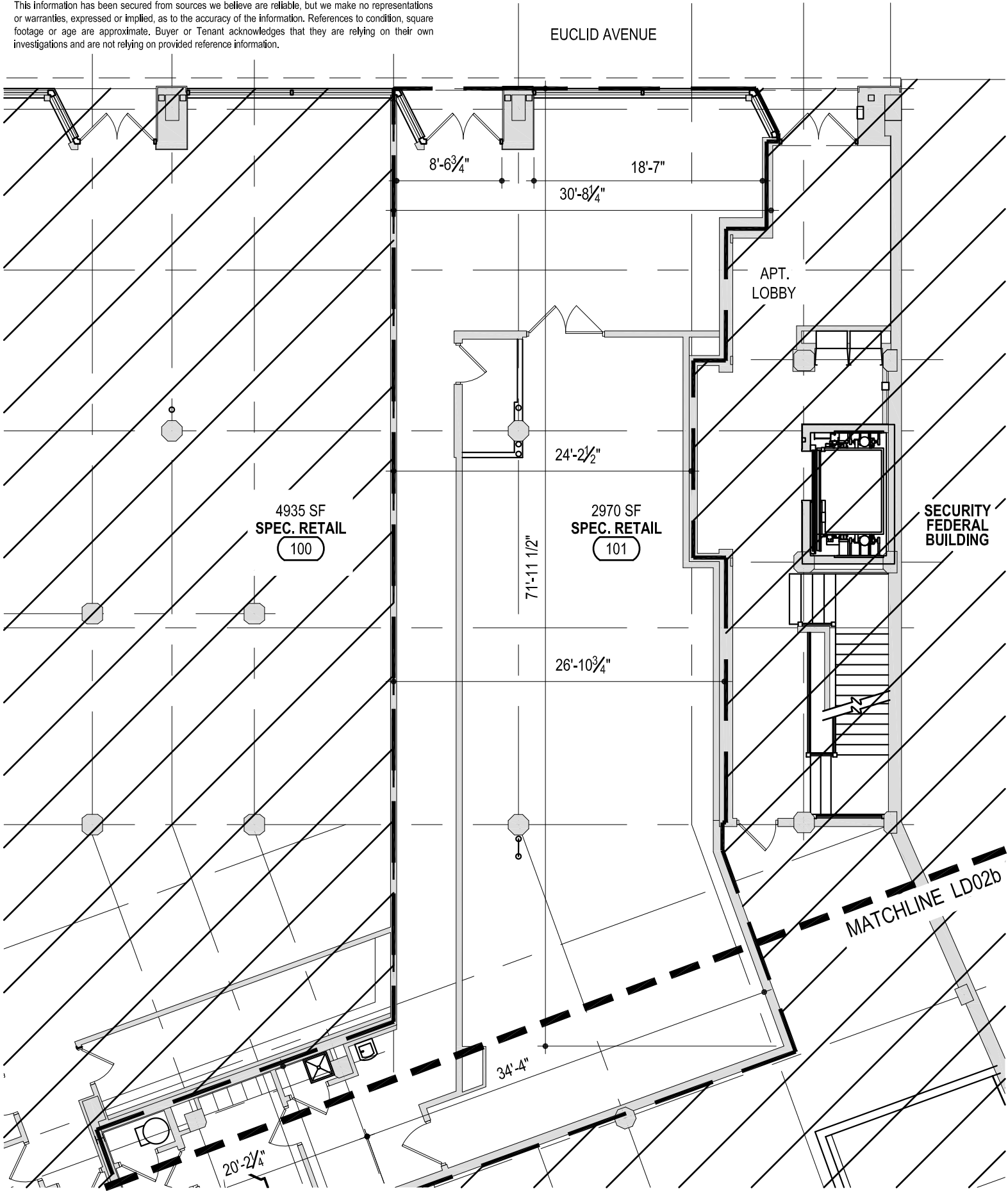


09 AUGUST 2023

LD01

This information has been secured from sources we believe are reliable, but we make no representations or warranties, expressed or implied, as to the accuracy of the information. References to condition, square footage or age are approximate. Buyer or Tenant acknowledges that they are relying on their own investigations and are not relying on provided reference information.

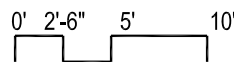
EUCLID AVENUE



1026 EUCLID AVENUE
CLEVELAND, OHIO 44115
THE IVORY



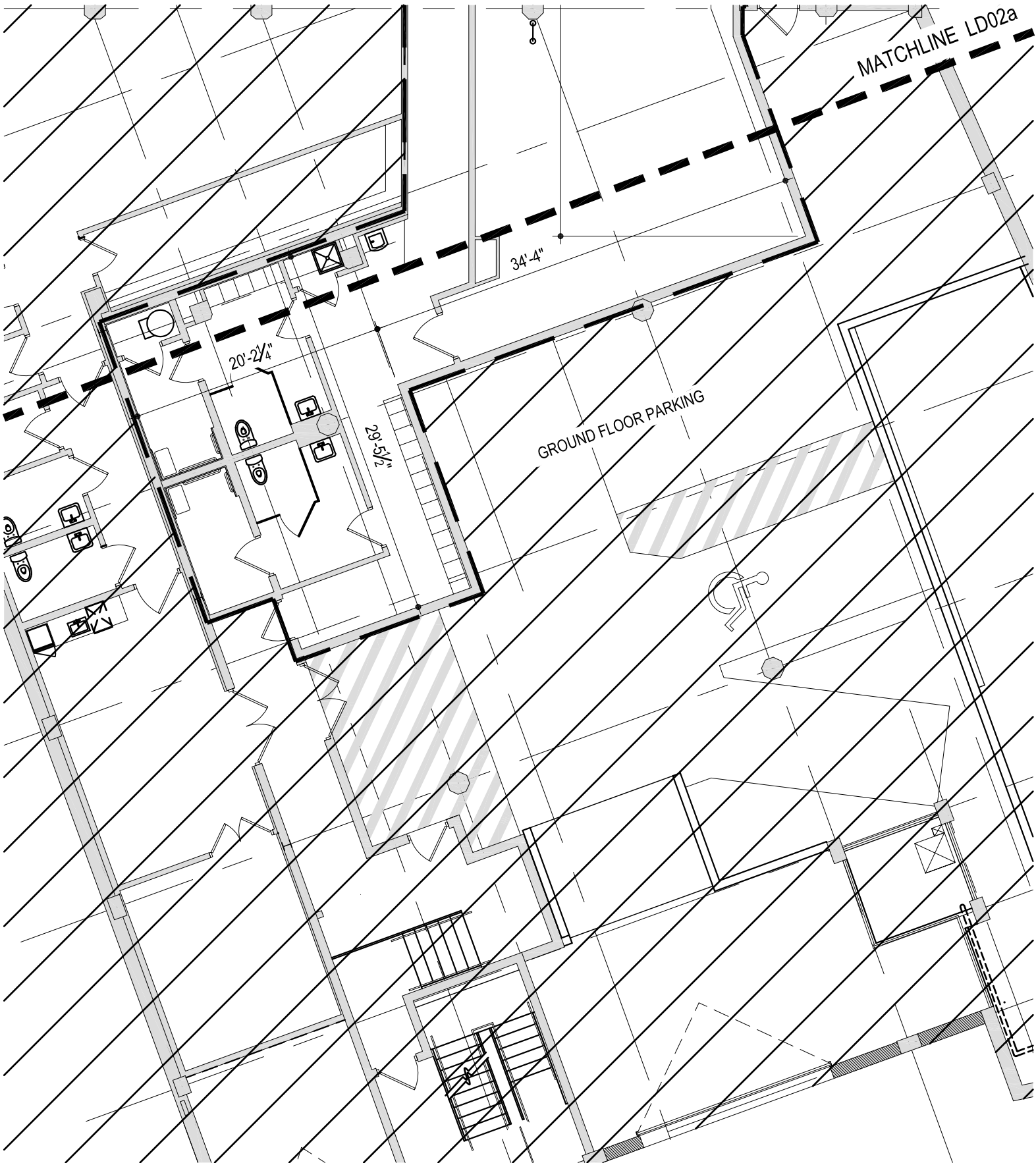
FIRST FLOOR PLAN



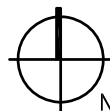
09 AUGUST 2023

LD02a

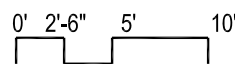
This information has been secured from sources we believe are reliable, but we make no representations or warranties, expressed or implied, as to the accuracy of the information. References to condition, square footage or age are approximate. Buyer or Tenant acknowledges that they are relying on their own investigations and are not relying on provided reference information.



1026 EUCLID AVENUE
CLEVELAND, OHIO 44115
THE IVORY



FIRST FLOOR PLAN



09 AUGUST 2023

LD02b