

FOR LEASE

**24,250 SF | Industrial**

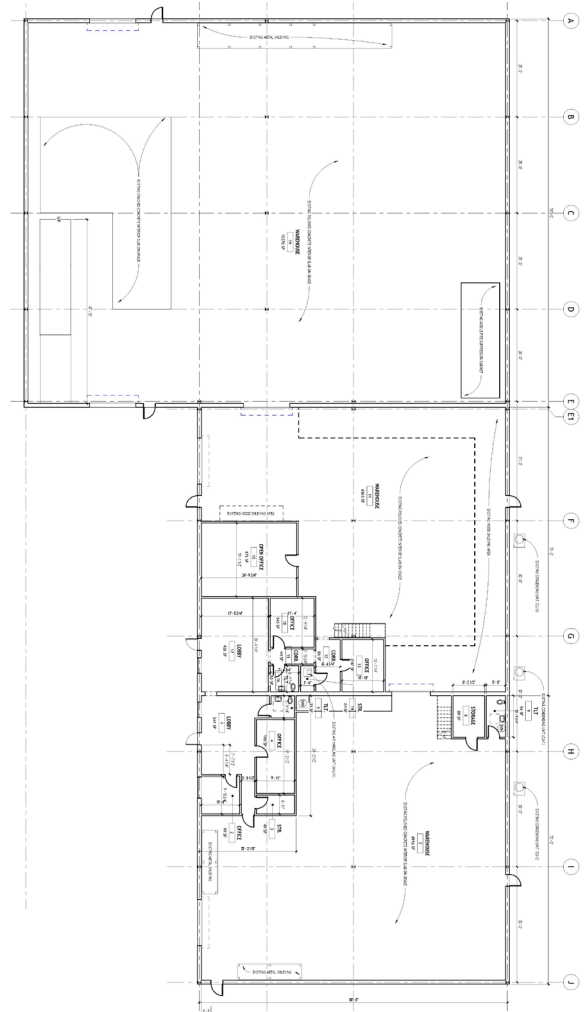
1500 Union Hill Rd | Alpharetta, GA 30005

**NEWLY RENOVATED!**



## PROPERTY HIGHLIGHTS

PROPERTY SIZE:	24,250 SF
OFFICE SPACE:	2,255 SF
CEILING HEIGHT:	18' clear
LOADING:	1 dock high door 3 oversized drive in doors (14' w x 16' h)
POWER:	120/240 V 400 Amps
ZONING:	M1 Zoning (City of Alpharetta)



**MENDY RUDER**  
mruder@lee-associates.com  
○ 404.442.2848

**HARRISON TUCK**  
htuck@lee-associates.com  
○ 404.442.2872

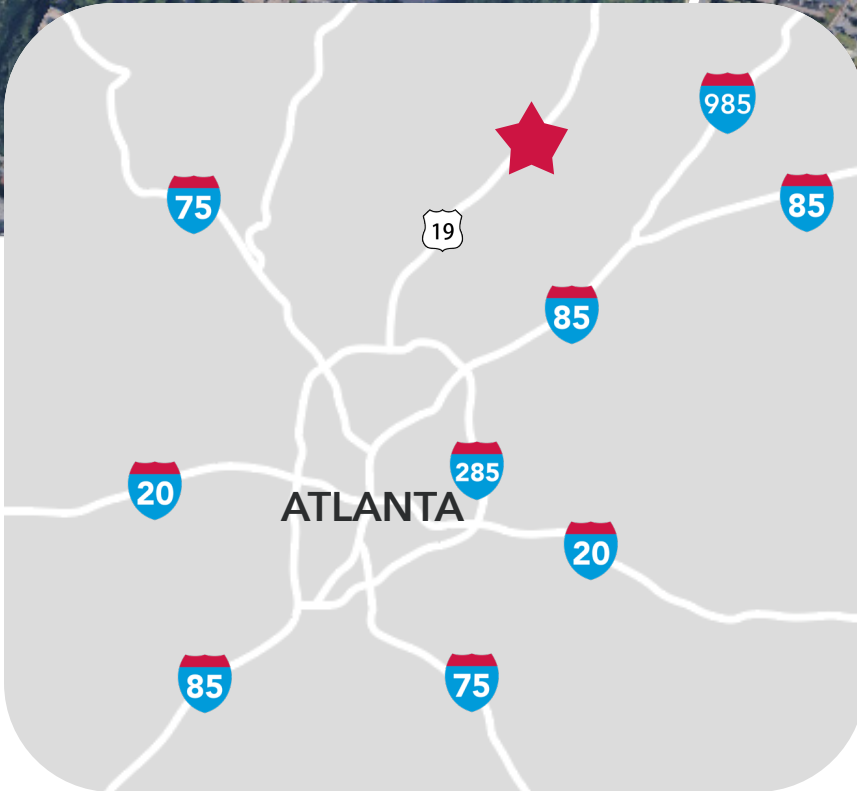
All information furnished regarding property for sale, rental, or financing is from sources deemed reliable, but not warranty or representation is made to the accuracy thereof and same is submitted to errors, omissions, change of price, rental or other conditions prior to sale, lease, or financing or withdrawal without notice. No liability of any kind is to be imposed on the broker herein.

FOR LEASE

**24,250 SF | Industrial**

1500 Union Hill Rd | Alpharetta, GA 30005

**NEWLY RENOVATED!**



**LOCATION HIGHLIGHTS**

McGinnis Ferry Rd | 0.2 mi

GA 400 | 0.8 mi via McGinnis Ferry Rd

I-285 | 17 mi

Atlanta Airport | 42 mi

**MENDY RUDER**  
mruder@lee-associates.com  
404.442.2848

**HARRISON TUCK**  
htuck@lee-associates.com  
404.442.2872

All information furnished regarding property for sale, rental, or financing is from sources deemed reliable, but not warranty or representation is made to the accuracy thereof and same is submitted to errors, omissions, change of price, rental or other conditions prior to sale, lease, or financing or withdrawal without notice. No liability of any kind is to be imposed on the broker herein.

FOR LEASE

**24,250 SF | Industrial**

1500 Union Hill Rd | Alpharetta, GA 30005

**NEWLY RENOVATED!**

