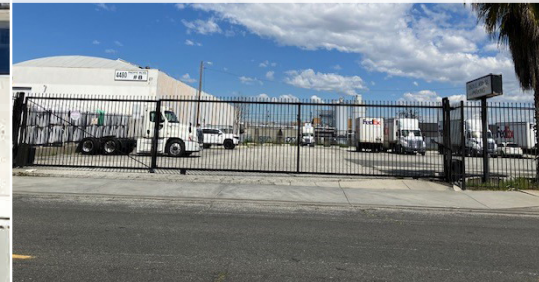


INDUSTRIAL LAND FOR

LEASE

LEE & ASSOCIATES
COMMERCIAL REAL ESTATE SERVICES

Major Price Reduction!



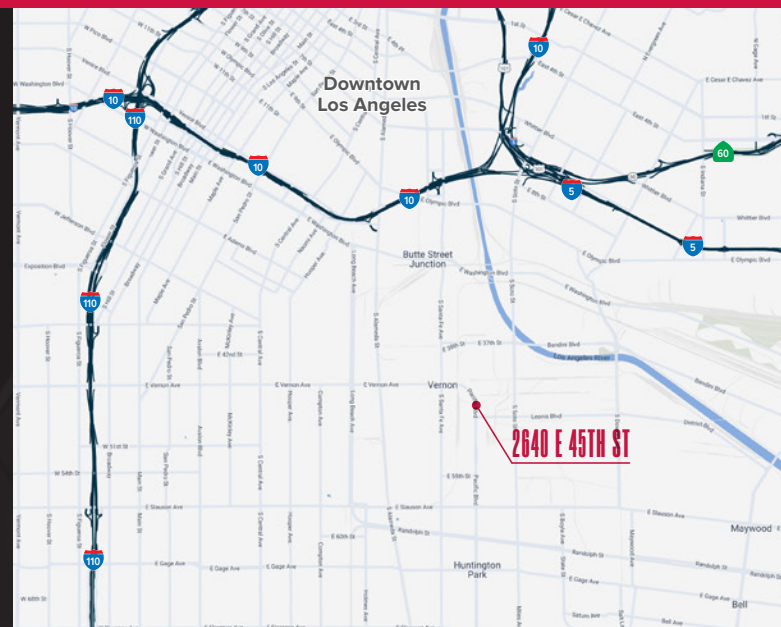
2625 E 45th St, Vernon, CA 90058
±77,952 SF of Industrial Land

PROPERTY HIGHLIGHTS

- ±77,952 SF of Land for Lease
- Great Vernon Location
- Fully Fenced & Paved with Lights
- Short or Long Term Lease
- Electric Vehicle or Fleet Storage
- Overflow Auto Storage

PRICING SUMMARY

- **LEASE RATE:** **\$38,000/Mo GRS**
 (\$0.49 PSF/Mo)



Peter D. Bacci

SIOR | Executive VP, Principal | LIC NO 00946253
pbacci@lee-associates.com
323.767.2022

David Brandt

Executive VP & Partner | LIC NO 00999100
dbrandt@lee-associates.com
323.767.2104

Jake Poxon

Executive VP & Principal | LIC NO 01968984
jpoxon@lee-associates.com
323.767.2055



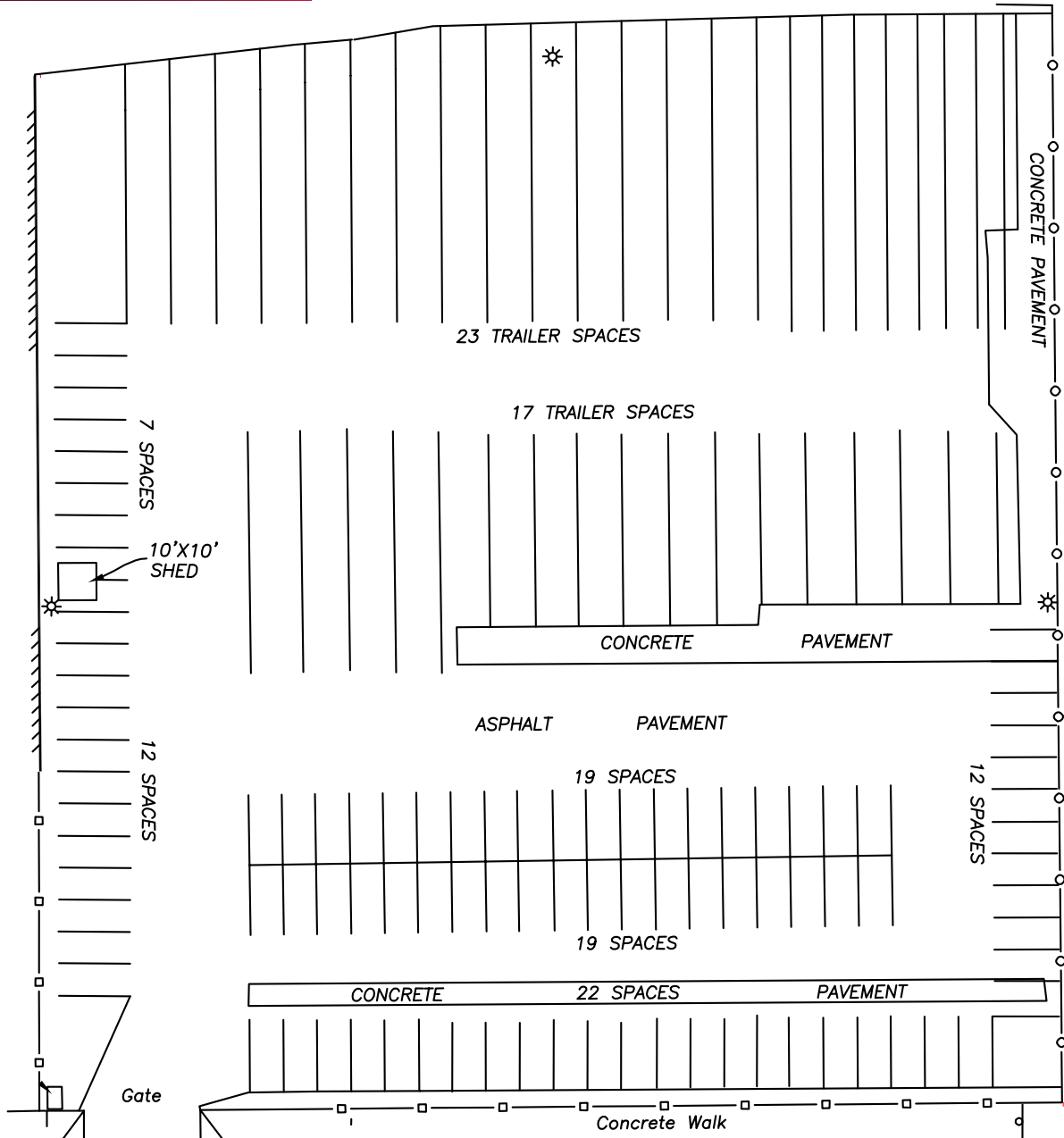
Lee & Associates | Los Angeles Central
5675 Telegraph Rd, Ste 300, Commerce, CA 90040

LEE-ASSOCIATES.COM
CORP ID 01125429

The information contained herein is obtained from sources believed to be reliable. However, we have not verified it and make no guarantees, warranties or representations as to the completeness or accuracy thereof. The presentation of this property is used for example and is submitted subject to errors, omissions, change of price or conditions, and is subject to prior sale, lease or withdrawal without notice.

INDUSTRIAL LAND FOR LEASE

PROPERTY SITE PLAN



E 45TH ST



NOTE: Drawing not to scale. All measurements and sizes are approximate.

2625 E 45th St, Vernon, CA 90058

±77,952 SF of Industrial Land

Peter D. Bacci

SIOR | Executive VP, Principal | LIC NO 00946253

pbacci@lee-associates.com

323.767.2022

David Brandt

Executive VP & Partner | LIC NO 00999100

dbrandt@lee-associates.com

323.767.2104

Jake Poxon

Executive VP & Principal | LIC NO 01968984

jpoxon@lee-associates.com

323.767.2055