

# 778 MYRTLE AVENUE

Bedford-Stuyvesant

Retail for Lease  
3,050 SF  
Divisible



## SUMMARY

An exciting opportunity to lease a brand-new 3,050 SF divisible retail space in Bed-Stuy. This ground floor space in a newly constructed building boasts large windows, abundant natural light, and an impressive 55 feet of frontage, ensuring high visibility from foot traffic along Myrtle Ave.

Just steps from the subway and close to necessities like Duane Reade, FedEx and Crown Fried Chicken, this space could be great for a fitness studio, wellness center, daycare, office, gallery, specialty retailer or café.

## LEASABLE AREA

3,050 SF Ground Level

## CEILING HEIGHTS

10-15 Feet

## CROSS STREETS

Nostrand Ave and Marcy Ave

## PRICING & TERMS

Upon request

## AVAILABILITY

Immediate

## TRANSPORTATION



## NEARBY TENANTS



For more information, contact exclusive agents:

Peter Schubert  
Managing Director  
pschubert@terracrg.com

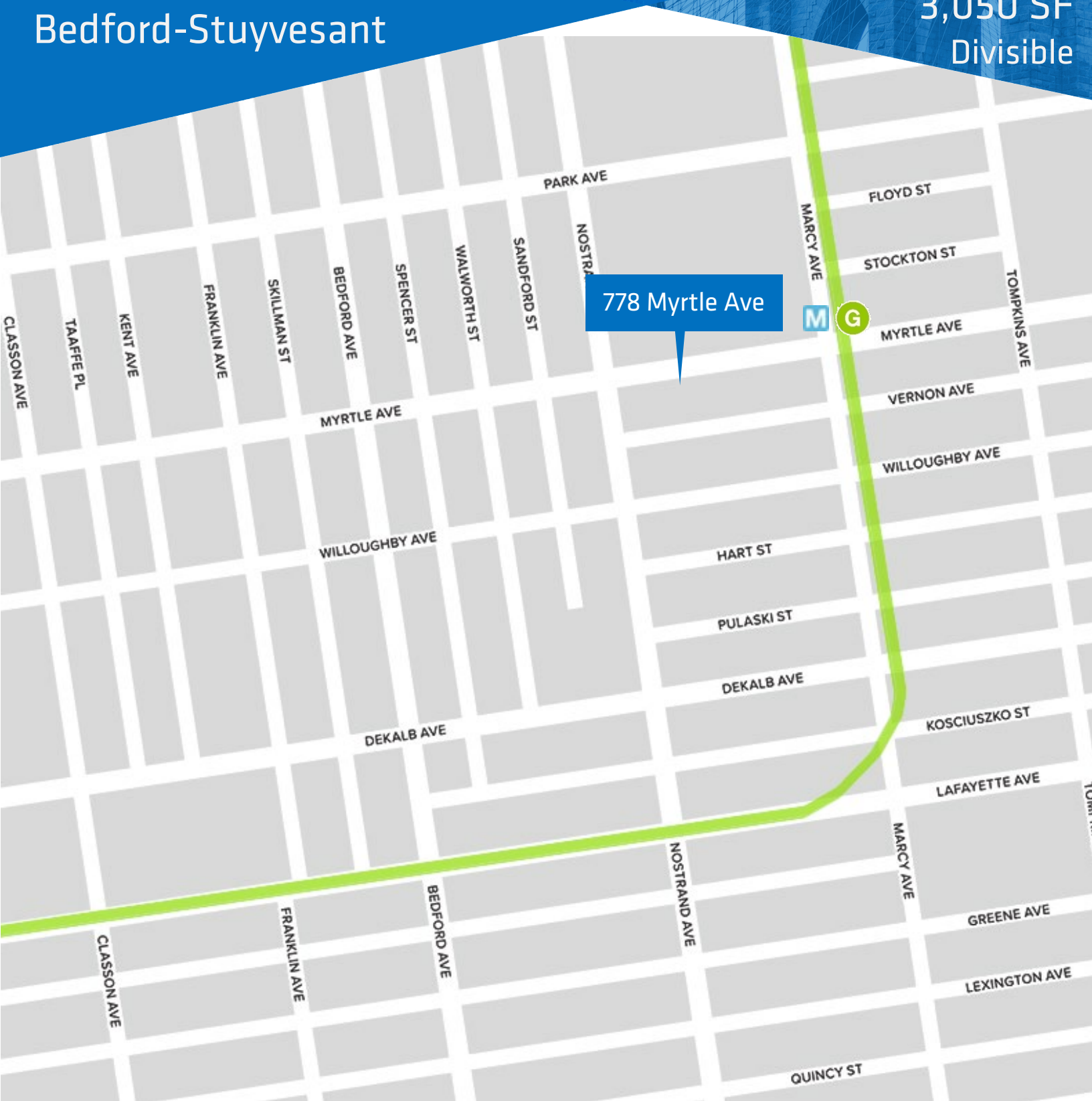
Darlene Lee  
Associate  
dlee@terracrg.com

(718) 768-7788  
terracrg.com

# 778 MYRTLE AVENUE

Bedford-Stuyvesant

Retail for Lease  
3,050 SF  
Divisible



For more information, contact exclusive agents:

**Peter Schubert**  
Managing Director  
pschubert@terracrgr.com

**Darlene Lee**  
Associate  
dlee@terracrgr.com

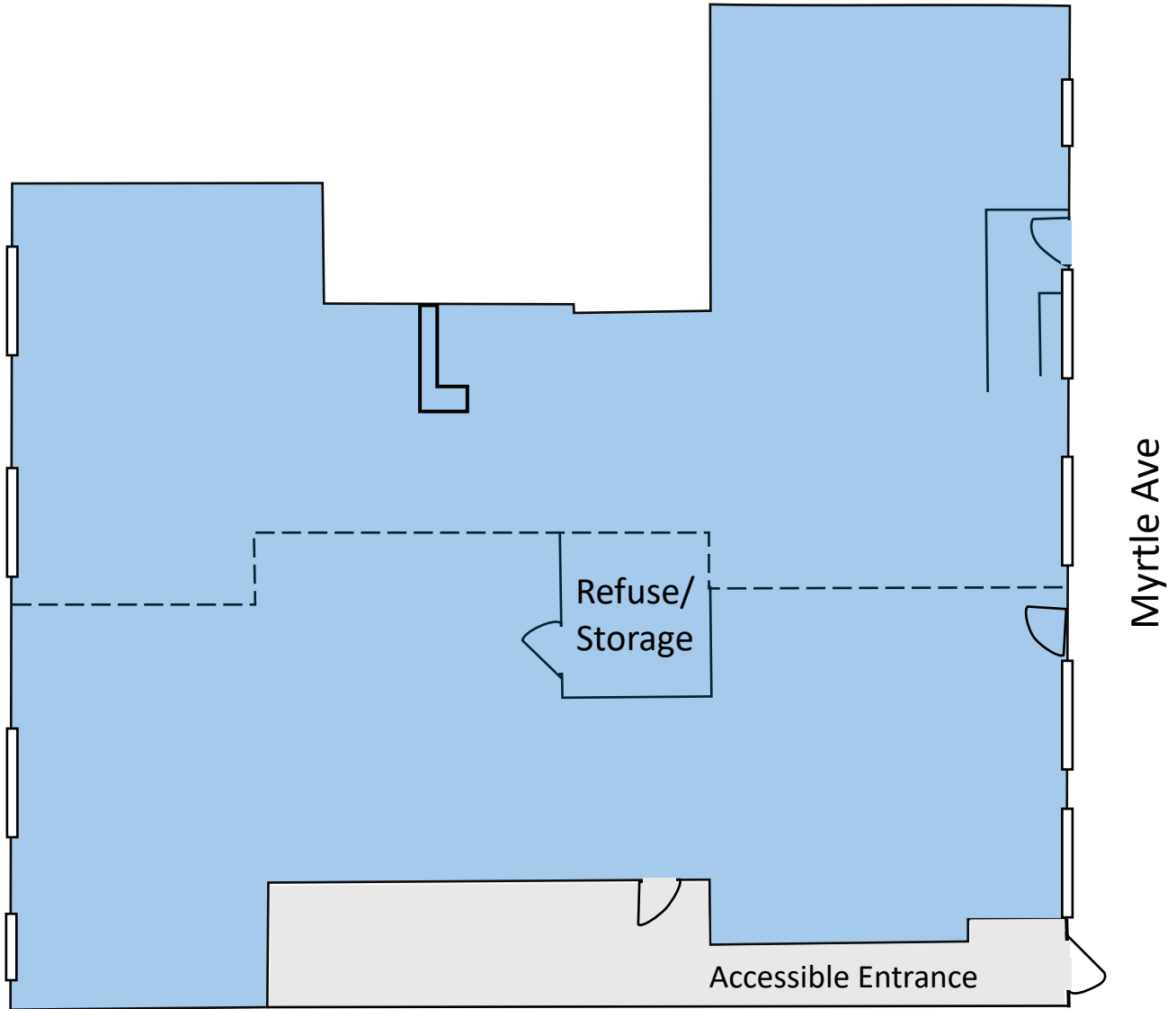
**(718) 768-7788**  
terracrgr.com



# 778 MYRTLE AVENUE

Bedford-Stuyvesant

Retail for Lease  
3,050 SF  
Divisible



Myrtle Ave

Refuse/  
Storage

Accessible Entrance

The information provided herein has either been given to us by the owner of the property or was obtained from sources we deem reliable. We do not guarantee the accuracy of any information. All zoning, existing square feet of buildings, available buildable square feet, permitted uses and any other information provided herein must be independently verified. The value of any real estate investment is dependent upon a variety of factors including income, vacancy rates, expense estimates, tax brackets and general market assumptions, all of which should be evaluated by your tax advisor and/or legal counsel. Prospective buyer and tenants should carefully verify each item of information herein.



For more information, contact exclusive agents:

**Peter Schubert**  
Managing Director  
pschubert@terrarcrg.com

**Darlene Lee**  
Associate  
dlee@terrarcrg.com

**(718) 768-7788**  
terrarcrg.com

# 778 MYRTLE AVENUE

Bedford-Stuyvesant

Retail for Lease  
3,050 SF  
Divisible



For more information, contact exclusive agents:

**Peter Schubert**  
Managing Director  
pschubert@terrarcg.com

**Darlene Lee**  
Associate  
dlee@terrarcg.com

**(718) 768-7788**  
terrarcg.com