

2510 VALENTINE AVENUE

RIGHT OFF OF FORDHAM ROAD | FORDHAM HEIGHTS



OVER 34,000 SF OF PRIME RETAIL SPACE FOR LEASE

CONCEPTUAL RENDERING

2510 VALENTINE AVENUE

RIGHT OFF OF FORDHAM ROAD | FORDHAM HEIGHTS

PROPERTY DETAILS

SIZE: 8,835 SF Ground Floor
12,974 SF Second Floor
12,974 SF Third Floor

FRONTAGE: 128'

CEILING HEIGHT: 10' (each floor)

POSSESSION: Q1 2027

TRANSPORTATION: 

HIGHLIGHTS

- Brand new Development right off of Fordham Road
- All-glass frontage
- Excellent foot and vehicular traffic year-round
- Strong neighborhood demographics with a dense residential base
- Convenient access to the D train, multiple MTA bus lines, and major roadways
- Surrounded by national and local retailers
- Ideal uses:
National retailers, Fitness, Medical, Schools, supermarkets & many more!
- Neighboring tenants:
Applebee's, Target, Marshalls, JD Sport, Five Below, GAP, Chick-fil-A, Burlington, The Children's Place, Wingstop, Bank of America, Planet Fitness, Snipes, & many more!

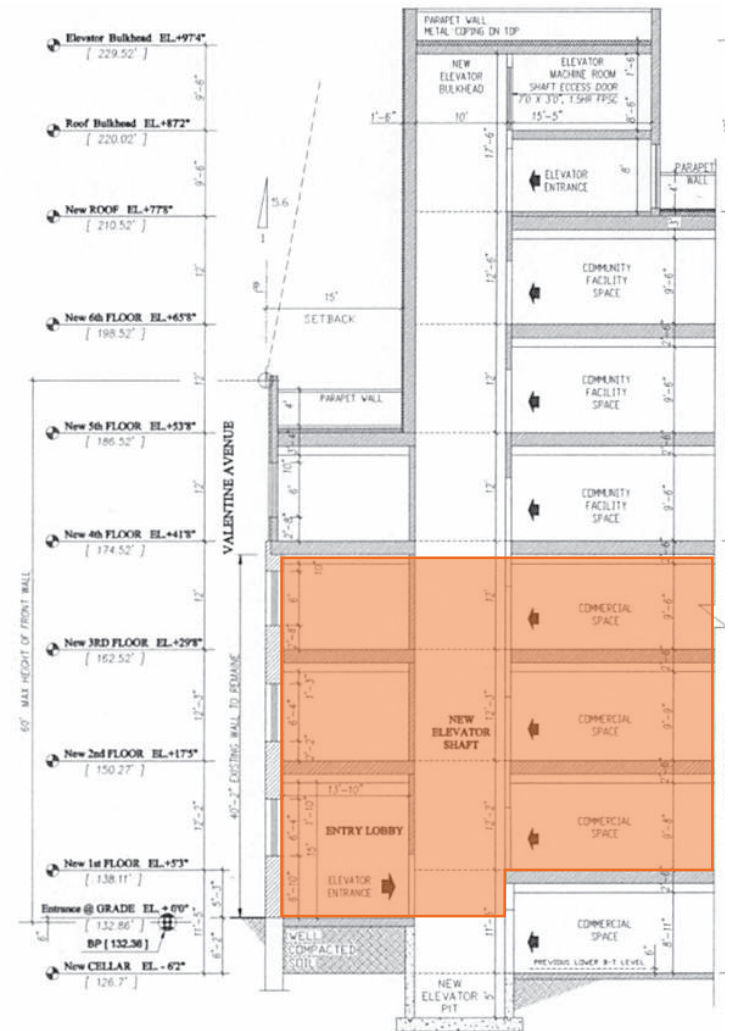
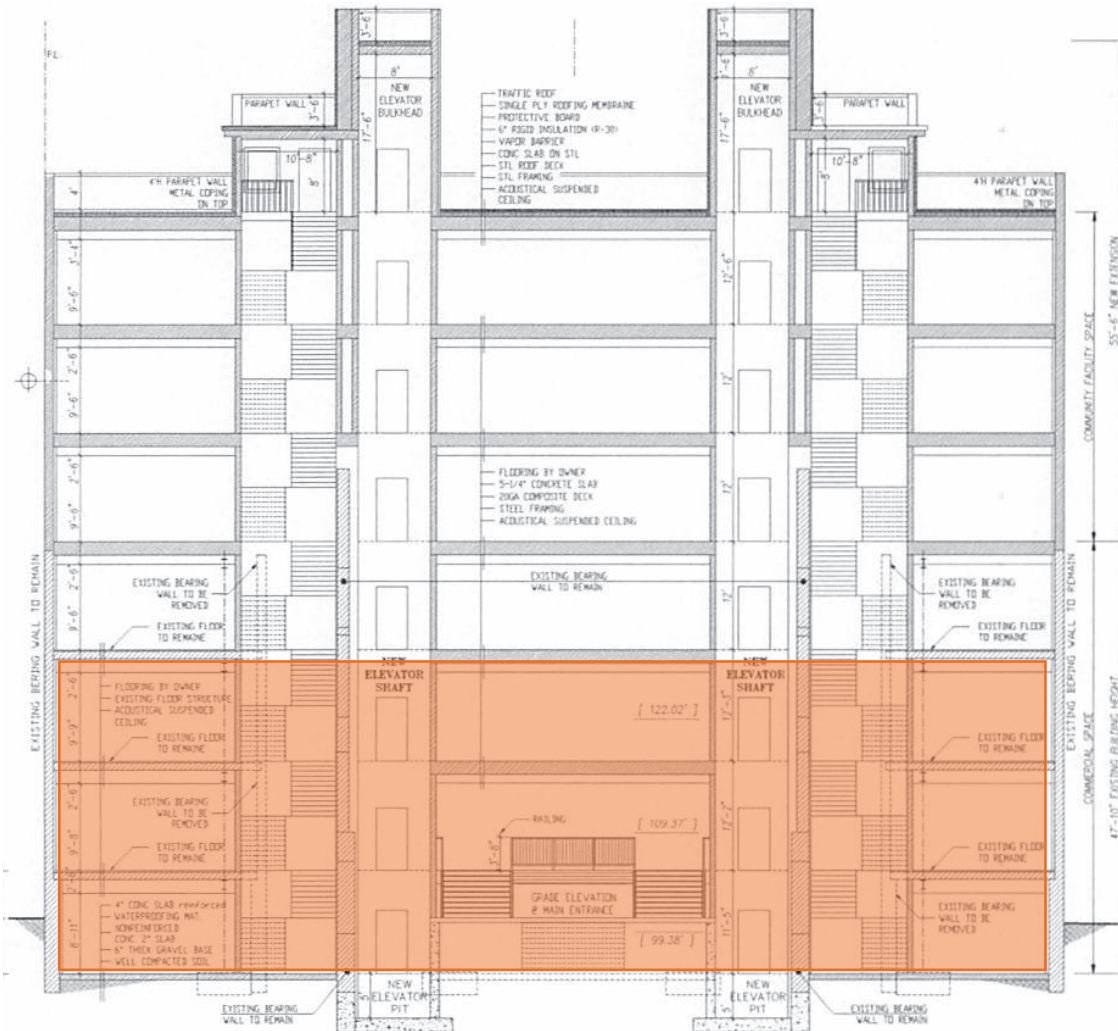


All information supplied in this marketing presentation and/or flyer is from sources deemed reliable and is furnished subject to errors, omissions, modifications, removal of listings from sale/lease and to any listing condition. Any square footage, dimensions, floor plans and/or technical data set forth are approximations and are subject to further elaboration/confirmation.

2510 VALENTINE AVENUE

RIGHT OFF OF FORDHAM ROAD | FORDHAM HEIGHTS

PROPOSED BUILDING PLAN:
TOTAL RETAIL SF - 34,783 SF



2510 VALENTINE AVENUE

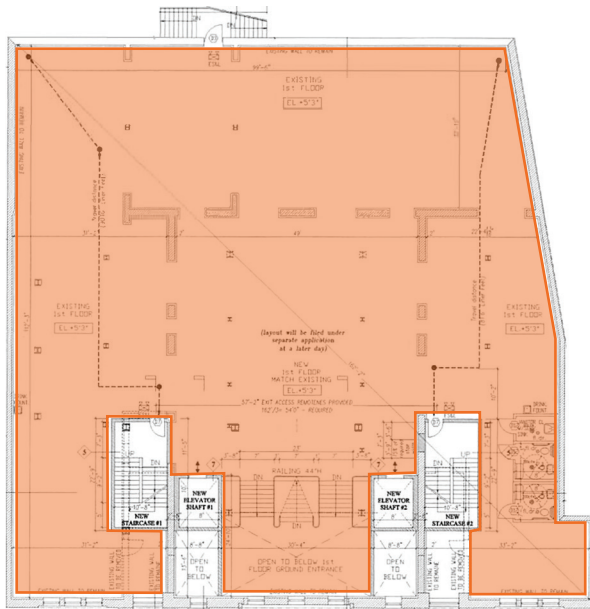
RIGHT OFF OF FORDHAM ROAD | FORDHAM HEIGHTS

FLOOR PLANS (RETAIL):

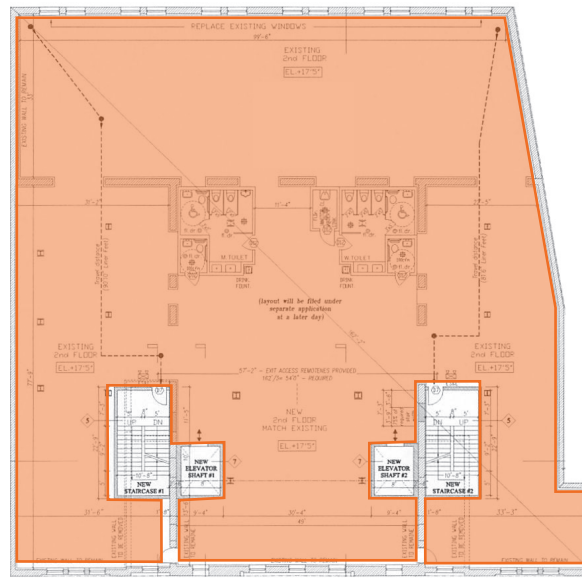
GROUND FLOOR - 8,835 SF

SECOND FLOOR - 12,974 SF

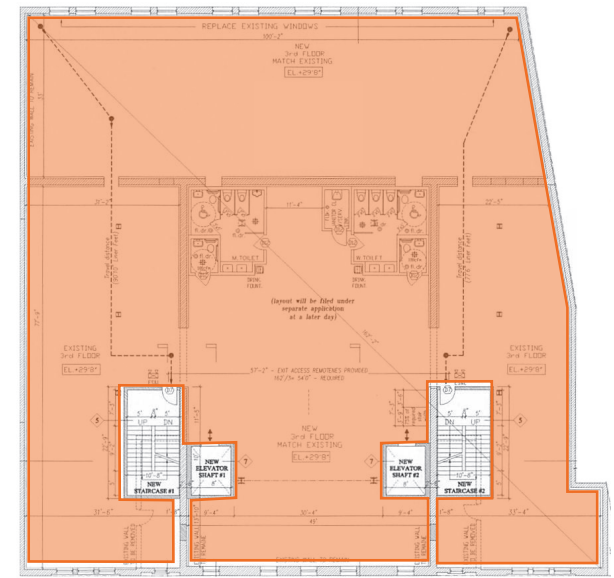
THIRD FLOOR - 12,974 SF



GROUND FLOOR



SECOND FLOOR



THIRD FLOOR



2510 VALENTINE AVENUE

RIGHT OFF OF FORDHAM ROAD | FORDHAM HEIGHTS

FOR MORE INFORMATION,
PLEASE CONTACT:

FREDDY SOUID

917.968.0329 | FSouid@ksrny.com

JACK HAMADANI

718.415.0095 | JHamadani@ksrny.com

