



# 9819

## BUSINESS PARK DRIVE

RANCHO CORDOVA, CA

### ±16,000 SF AVAILABLE FOR LEASE

- › ±2,000 SF Showroom/Office and Break Room
- › Excellent Glass Line
- › ±981 SF Shipping/Receiving Office in Rear
- › Two (2), 12'x14' Grade Level Doors
- › Two (2) Multiple Occupancy Restrooms
- › Fully Commercial Kitchen
- › Event Venue
- › Second-Generation Distillery Space
- › 22' Clear Height
- › 1,600 Amp Power
- › Common Area Loading Dock
- › Sprinklered
- › Monument Signage
- › Immediate Occupancy
- › Excellent Access to Highway 50

**NEWMARK**

**MIKE SMITH**  
Director  
916.569.2352  
mike.smith@nmrk.com  
CA RE License #01504428

**IRINA SHPYRKA**  
Associate  
916.569.2360  
irina.shpyrka@nmrk.com  
CA RE License #02037207

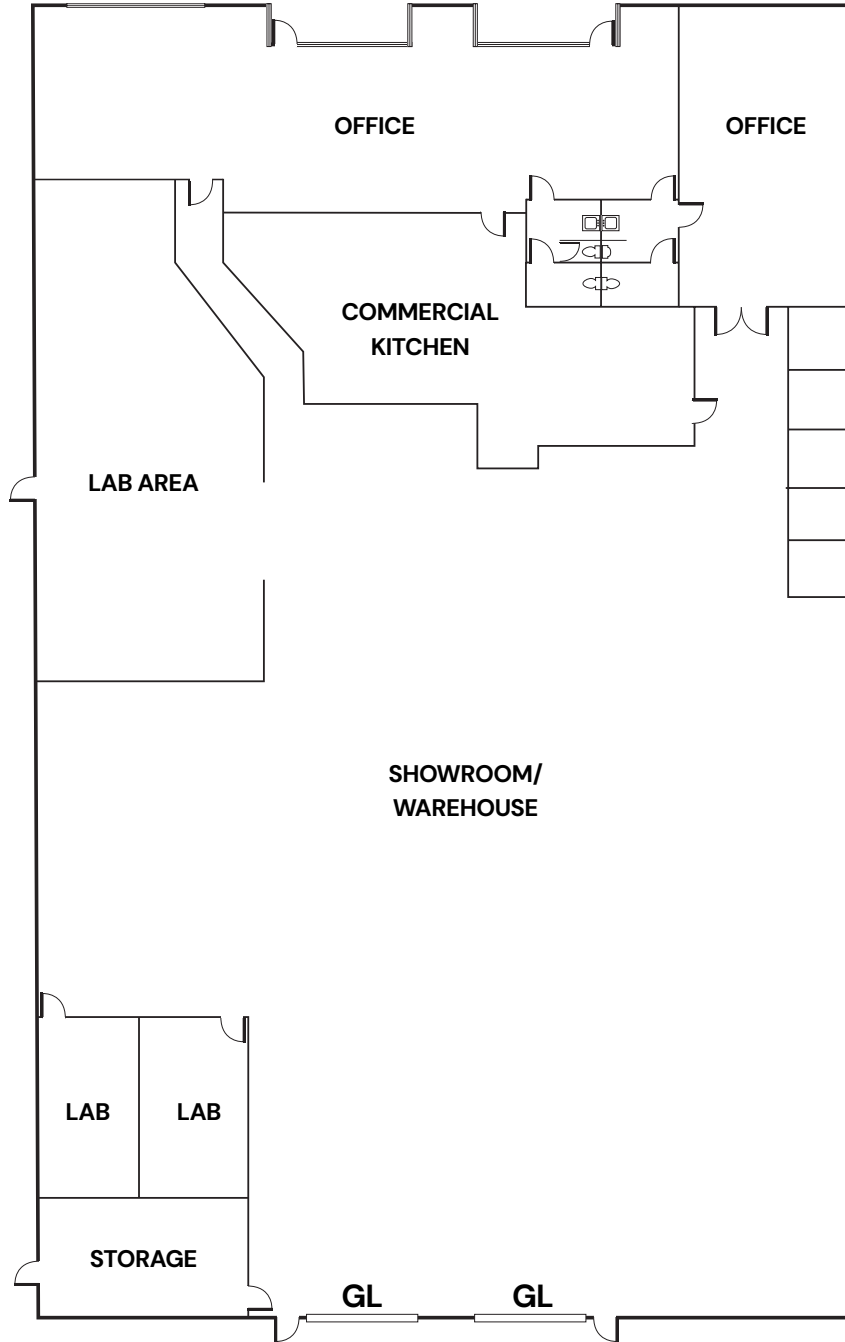
**COLE CUMMINGS**  
Associate Director  
916.569.2366  
cole.cummings@nmrk.com  
CA RE License #02106833

# 9819

## BUSINESS PARK DRIVE

RANCHO CORDOVA, CA

### FLOOR PLAN



**NEWMARK**

**MIKE SMITH**  
Director  
916.569.2352  
mike.smith@nrmk.com  
CA RE License #01504428

**IRINA SHPYRKA**  
Associate  
916.569.2360  
irina.shpyrka@nrmk.com  
CA RE License #02037207

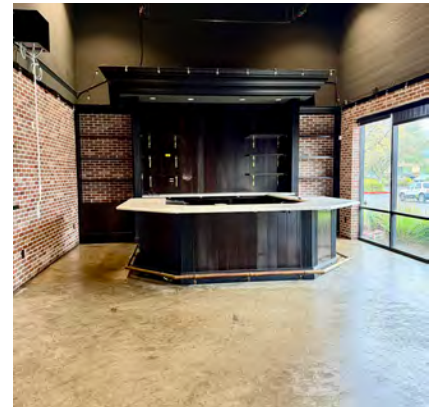
**COLE CUMMINGS**  
Associate Director  
916.569.2366  
cole.cummings@nrmk.com  
CA RE License #02106833

# 9819

## BUSINESS PARK DRIVE

RANCHO CORDOVA, CA

### PROPERTY PHOTOS



**NEWMARK**

**MIKE SMITH**  
Director  
916.569.2352  
mike.smith@nrmk.com  
CA RE License #01504428

**IRINA SHPYRKA**  
Associate  
916.569.2360  
irina.shpyrka@nrmk.com  
CA RE License #02037207

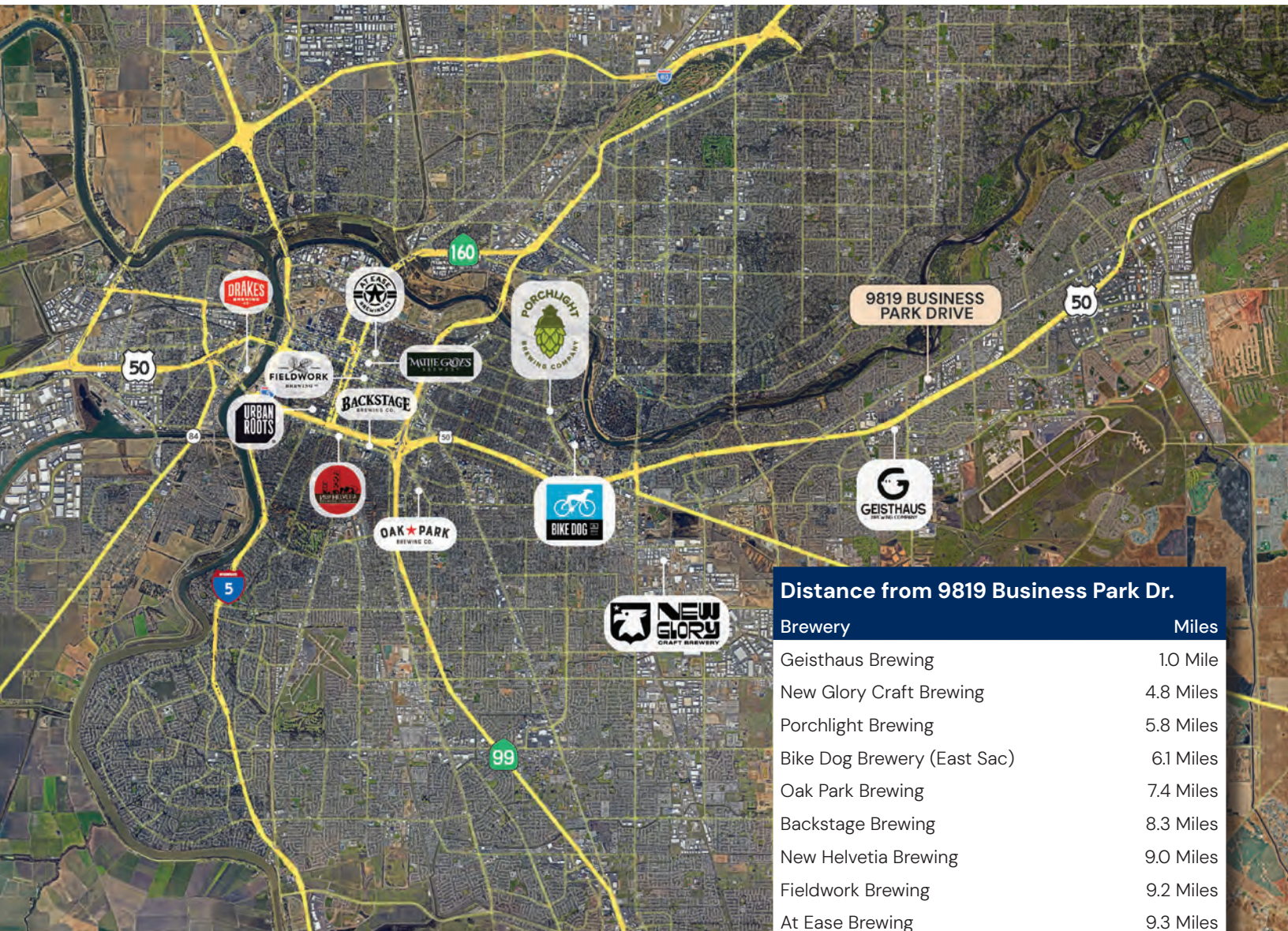
**COLE CUMMINGS**  
Associate Director  
916.569.2366  
cole.cummings@nrmk.com  
CA RE License #02106833

# 9819

## BUSINESS PARK DRIVE

RANCHO CORDOVA, CA

### REGIONAL BREWERIES



Distance from 9819 Business Park Dr.	
Brewery	Miles
Geisthaus Brewing	1.0 Mile
New Glory Craft Brewing	4.8 Miles
Porchlight Brewing	5.8 Miles
Bike Dog Brewery (East Sac)	6.1 Miles
Oak Park Brewing	7.4 Miles
Backstage Brewing	8.3 Miles
New Helvetia Brewing	9.0 Miles
Fieldwork Brewing	9.2 Miles
At Ease Brewing	9.3 Miles
Mattie Groves Brewery	9.4 Miles
Urban Root Brewery	9.5 Miles
Drake's at the Barn	10.8 Miles

**NEWMARK**

**MIKE SMITH**  
Director  
916.569.2352  
mike.smith@nrmk.com  
CA RE License #01504428

**IRINA SHPYRKA**  
Associate  
916.569.2360  
irina.shpyrka@nrmk.com  
CA RE License #02037207

**COLE CUMMINGS**  
Associate Director  
916.569.2366  
cole.cummings@nrmk.com  
CA RE License #02106833

# SURROUNDING RETAIL



9819 BUSINESS PARK DRIVE

Walmart  
SAFeway  
BANK OF AMERICA  
Jack In The Box

TARGET  
ULTA  
Marshalls  
ROSS DRESS FOR LESS  
DAISO  
five BELOW  
jamba  
Michaels  
crumbl cookies

Wendy's  
Krispy Kreme

Travelodge  
Carl's Jr.  
Chewy

Oz Korean BBQ

Sho-Bell

Food 4 Less  
IHOP  
Starbucks  
KFC

GROCERY OUTLET  
O'Reilly  
AutoZone  
SUBWAY

SACRAMENTO MATHER AIRPORT

# 9819 BUSINESS PARK DRIVE

RANCHO CORDOVA, CA

980 9th Street, Suite 2500, Sacramento, CA 95814

**MIKE SMITH**  
Director  
916.569.2352  
mike.smith@nmrk.com  
CA RE License #01504428

**IRINA SHPYRKA**  
Associate  
916.569.2360  
irina.shpyrka@nmrk.com  
CA RE License #02037207

**COLE CUMMINGS**  
Associate Director  
916.569.2366  
cole.cummings@nmrk.com  
CA RE License #02106833



The information contained herein has been obtained from sources deemed reliable but has not been verified and no guarantee, warranty or representation, either express or implied, is made with respect to such information. Terms of sale or lease and availability are subject to change or withdrawal without notice. 3/26