

5900 MERCURY DRIVE  
DEARBORN, MICHIGAN

HI-TECH FOR SALE OR LEASE  
71,734 Square Feet Available



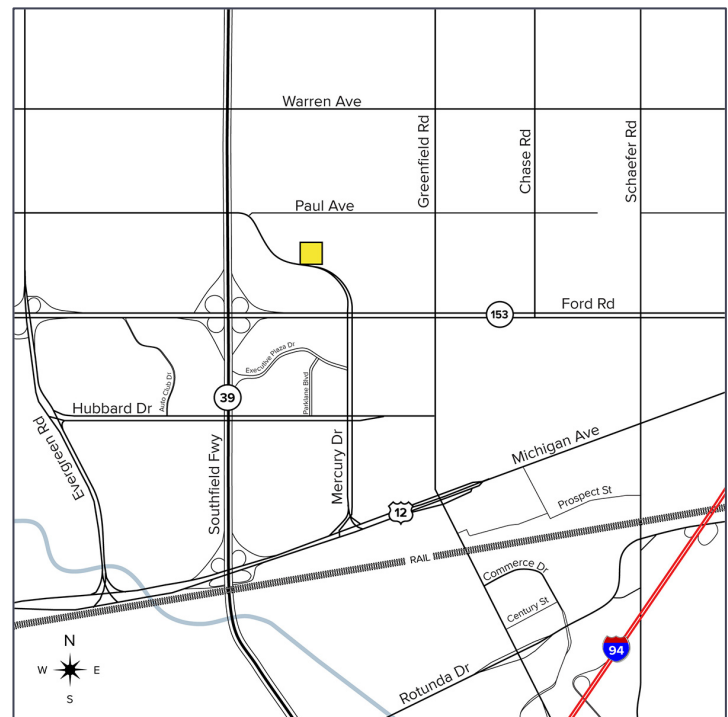
**SIGNATURE  
ASSOCIATES**  
KNOW SIGNATURE | KNOW RESULTS

**FORMER CARHART R&D CENTER**



## PROPERTY FEATURES

- 71,734 square feet available
- 6,500 square feet shop
- 9'5" – 17'5" clear height
- (1) 12' x 14' grade level door; can add another
- Exceptional interior space with lofted office areas and upgrades
- Conveniently located near expressways, downtown Detroit, and Metropolitan Airport
- Entire park features five quality hotels, several retail shopping complexes, more than 30 restaurants and four educational institutions
- Lease Rate: \$12.00/sq. ft. NNN
- Sale Price: \$6,500,000 (\$90.61/sq. ft.)



For more information, please contact:

**JACK TOWNSEND**  
(248) 948 0115  
jtownsend@signatureassociates.com

**CHRIS SECONTINE**  
(248) 799 3174  
csecontine@signatureassociates.com

**SIGNATURE ASSOCIATES**  
One Towne Square, Suite 1200  
Southfield, MI 48076  
www.signatureassociates.com

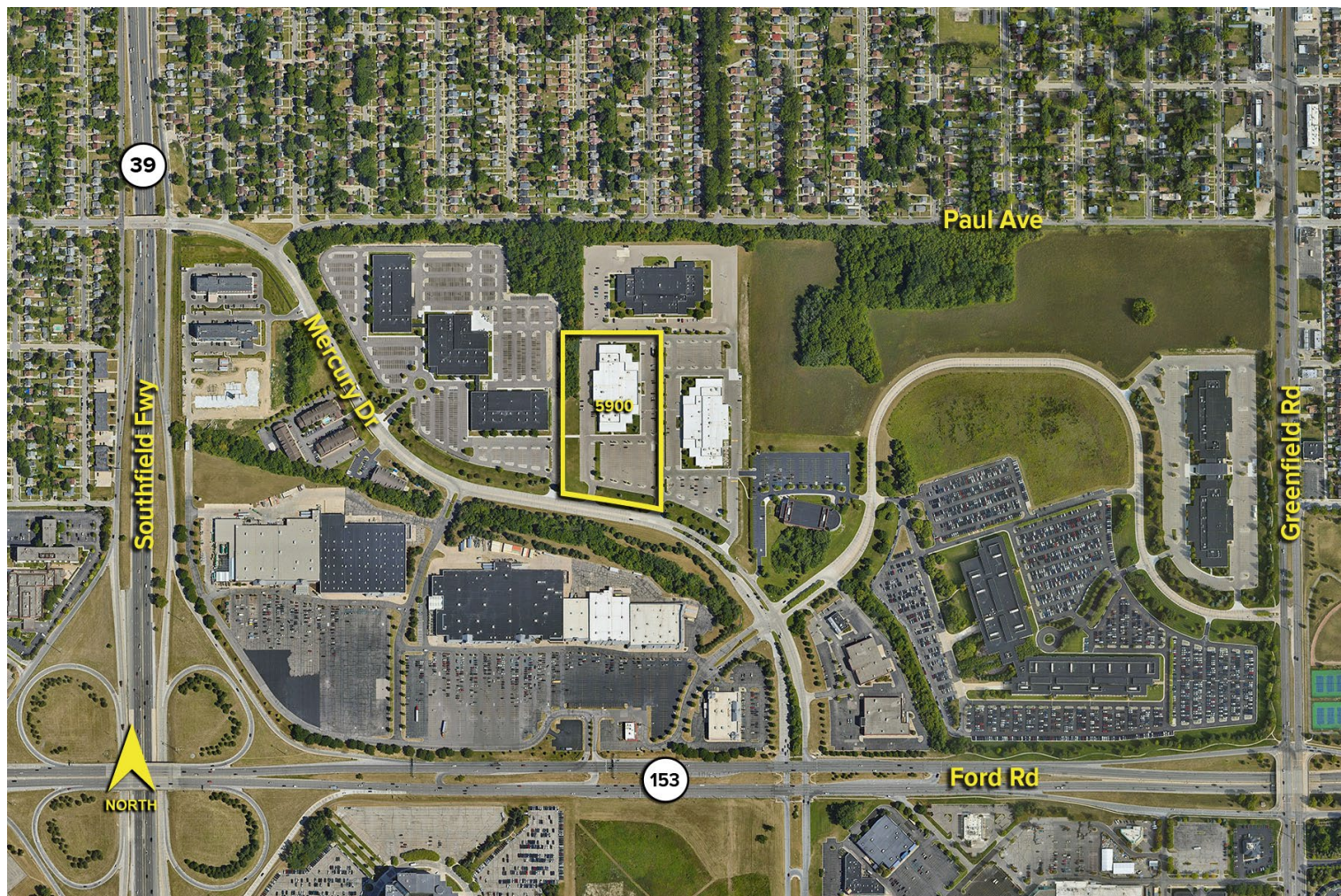


# 5900 Mercury Drive – Dearborn, Michigan

## Hi-Tech For Sale or Lease

71,734  
Square Feet  
AVAILABLE

Aerial



For more information, please contact:

**JACK TOWNSEND**  
(248) 948 0115  
jtownsend@signatureassociates.com

**CHRIS SECONTINE**  
(248) 799 3174  
csecontine@signatureassociates.com

**SIGNATURE ASSOCIATES**  
One Towne Square, Suite 1200  
Southfield, MI 48076  
www.signatureassociates.com

Information is subject to verification and no liability for errors or omissions is assumed. Price is subject to change and listing withdrawal.