



**COLDWELL BANKER  
COMMERCIAL**  
BROKERS  
OF THE VALLEY

# 2160 Jefferson Street Suite #110, Napa, CA



## Office Suite for Lease in Central Napa

*Quiet Setting ~ Close to Amenities ~ Easy Access to Highway 29 ~ Good Parking*  
**First Two Months Free Rent if 3-Year Minimum Lease Signed by 12/31/26**

### Suite #110 - ±1,251

- Reception/Large Open Office Entry Area
- 1st Floor Suite w/Corner Office
- Windows that Open
- Break Room
- \$2.60/SF/Mo.



**Zoning: Community Commercial (CC)**



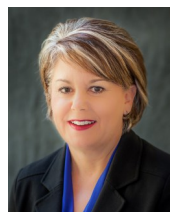
**Michael Moffett**  
License #00946472  
707.479.1976  
mmoffett@cnapavalley.com

1775 Lincoln Ave.  
Napa, CA 94558

**Cathy Holmes**

License #01355085  
707.304.3338

cholmes@cnapavalley.com



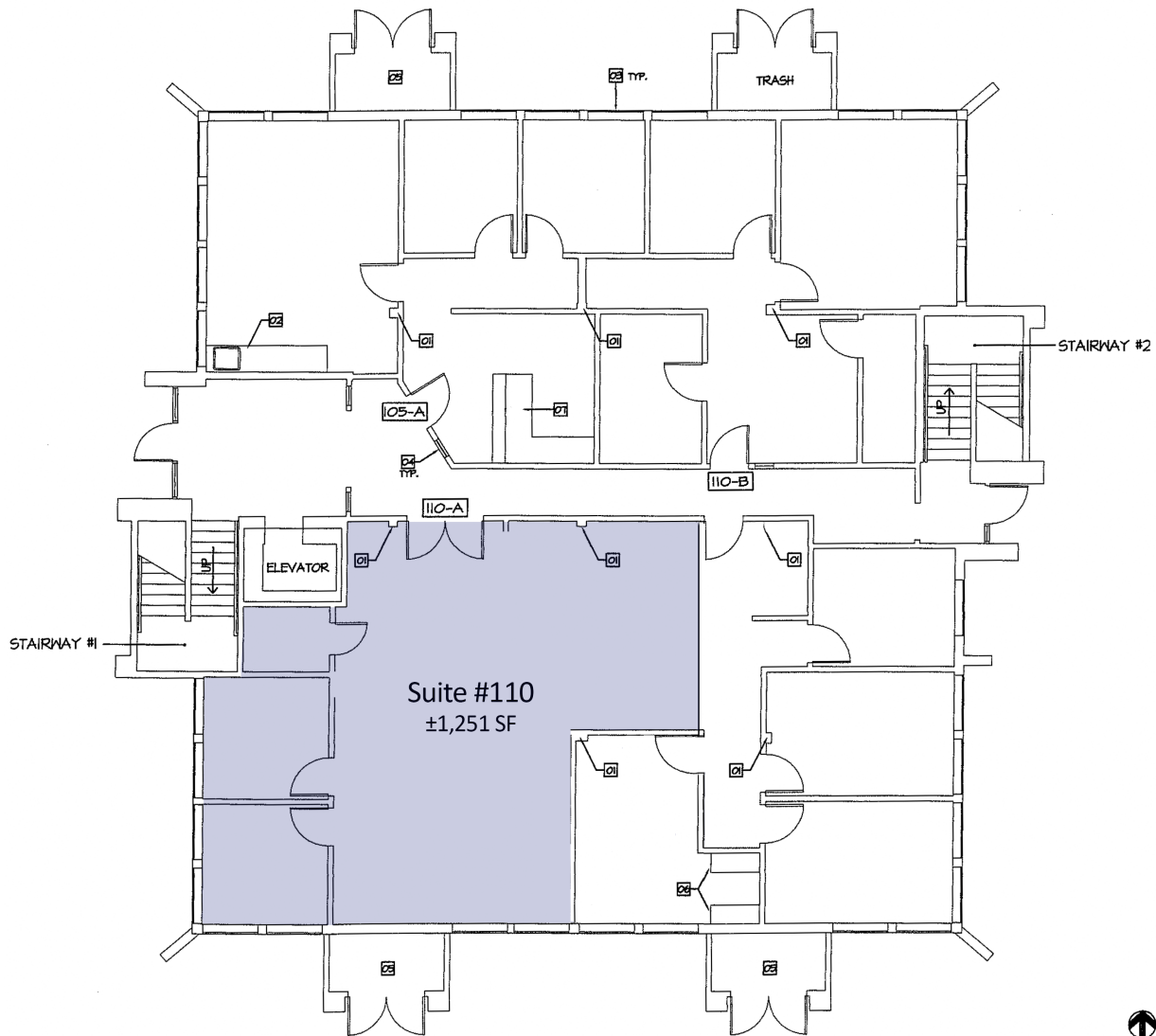


**COLDWELL BANKER  
COMMERCIAL**  
BROKERS  
OF THE VALLEY

# 2160 Jefferson Street

## Suite #110, Napa, CA

### FLOORPLAN - Suite #110



**Michael Moffett**  
License #00946472  
707.479.1976  
mmoffett@cnapavalley.com

1775 Lincoln Ave.  
Napa, CA 94558

**Cathy Holmes**

License #01355085  
707.304.3338  
cholmes@cnapavalley.com

