

FOR LEASE: 50,793 +/- SQ. FT. INDUSTRIAL PROPERTY



46 WHELAN RD

EAST RUTHERFORD, NJ 07073

Contact **Exclusive Broker**

Eric Lewin

Office (201) 438-1177

Mobile (201) 832-4569

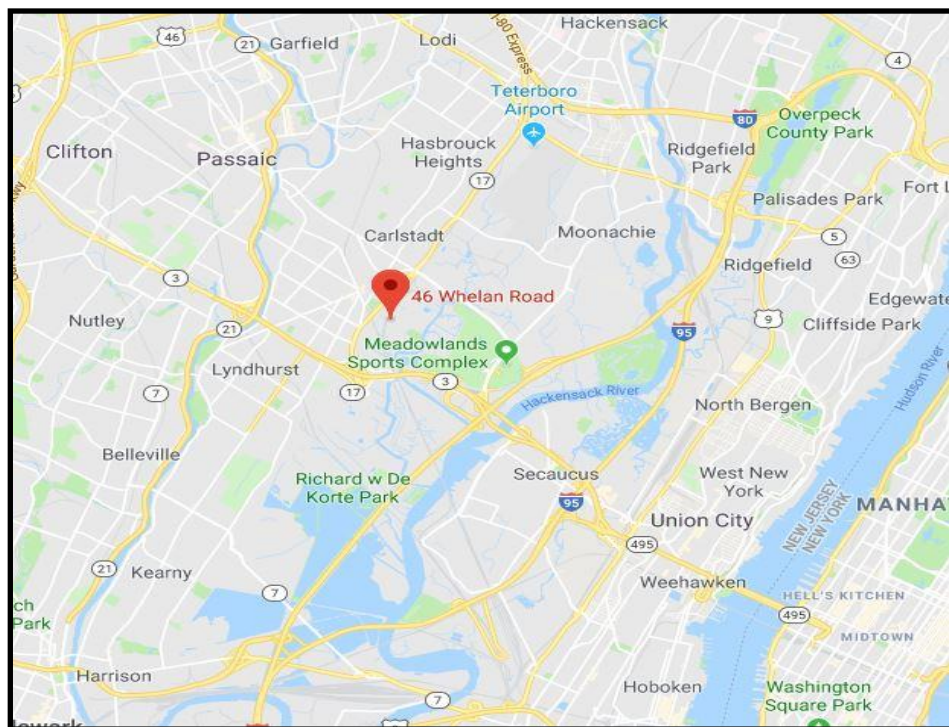
elewin@teamresourcesinc.com



1050 Wall Street West | Lyndhurst, NJ 07071 | info@teamresourcesinc.com | 201.438.1177

46 WHELAN RD // EAST RUTHERFORD, NJ 07073

Team Resources is pleased to present this 50,793 +/- sq. ft. prime industrial space available in the heart of Bergen County's highly desirable Meadowlands submarket. This well positioned property offers efficient warehouse space with excellent accessibility to major highways, including Routes 3, 17, 46, the NJ TPK and just minutes from the GWB & Lincoln Tunnel. Featuring high ceilings, multiple loading docks, and ample on-site parking, 46 Whelan is ideally suited for distribution, logistics and light manufacturing users seeking a strategic location with proximity to NYC and the region's top consumer base.



CONTACT BROKER:

Eric Lewin

Office (201) 438-1177

Mobile (201) 832-4569

elewin@teamresourcesinc.com

Property Description

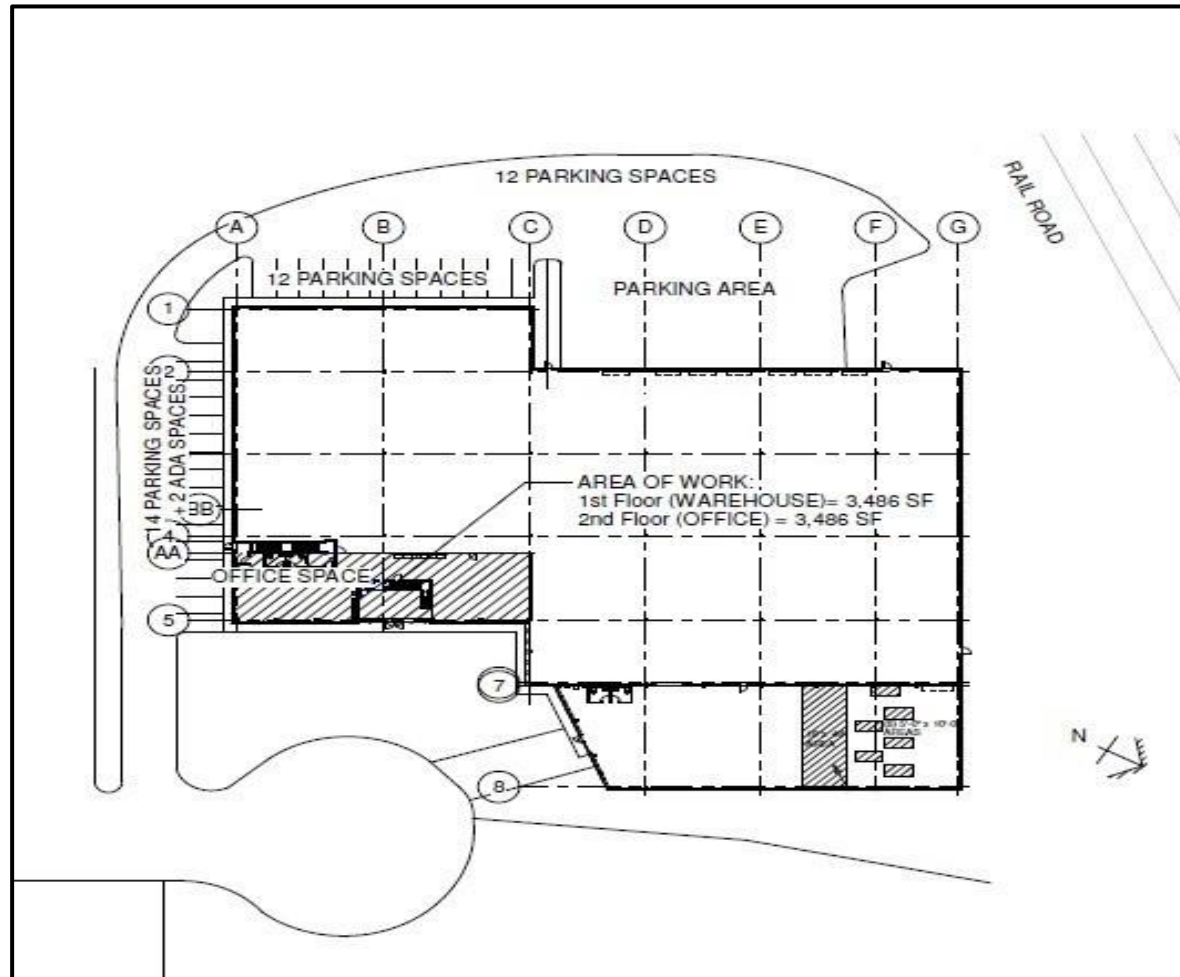
Available Space:	50,793 ± sq. ft.
Building Size:	50,793 ± sq. ft.
Acreage:	3.5 ± acres
Office Space:	4,400± sq. ft. (2 Floors)
Ceiling Height:	28'- 30' ceilings
Loading Doors:	7 tailboards & 1 drive-in
Column Span:	53' x 40'
Parking:	40 car parking
Sprinklers:	wet
Power:	800 amps/480v/3p
Lease Rate:	Upon request
Tax/Opex:	\$4.65/\$0.67

KEY DISTANCES

Ports	16.5 miles
Route 3	1.1 miles
NJ Tpk Exit 16W	2.9 miles
Lincoln Tunnel	5.5 miles
Route 280	8.3 miles



46 WHELAN RD // EAST RUTHERFORD, NJ 07073



CONTACT BROKER:

Eric Lewin

Office (201) 438-1177

Mobile (201) 832-4569

elewin@teamresourcesinc.com



