

SOUTH WEBER COMMERCIAL LAND

FOR SALE



PROPERTY DETAILS

7745 SOUTH 2700 EAST, SOUTH WEBER, UT 84405

- Land For Sale
- 2.9 Acres
- Zoning: Call Agents to Discuss
- \$15.00/SF
- Highway 89 Visibility
- Close Access to I -84



MOUNTAIN WEST
COMMERCIAL REAL ESTATE



HG MANOR
REAL ESTATE GROUP

RAND SARGENT

rsargent@mwcre.com
direct 801.989.1600
[View Profile](#)

ASHLEY ALLRED

aallred@mwcre.com
direct 801.309.6889
[View Profile](#)

RYAN FLINT, SIOR

ryan@hgmanor.com
direct 801.200.9199
[View Profile](#)

**FULL SERVICE
COMMERCIAL REAL ESTATE**
312 East South Temple
Salt Lake City, UT 84111
Office 801.456.8800
www.mwcre.com



MOUNTAIN WEST
COMMERCIAL REAL ESTATE



HG MANOR
REAL ESTATE GROUP

RAND SARGENT

rsargent@mwcre.com
direct 801.989.1600
[View Profile](#)

ASHLEY ALLRED

aallred@mwcre.com
direct 801.309.6889
[View Profile](#)

RYAN FLINT, SIOR

ryan@hgmanor.com
direct 801.200.9199
[View Profile](#)

**FULL SERVICE
COMMERCIAL REAL ESTATE**
312 East South Temple
Salt Lake City, UT 84111
Office 801.456.8800
www.mwcre.com

CONCEPTUAL SITE PLAN

SOUTH WEBER COMMERCIAL LAND



MOUNTAIN WEST
COMMERCIAL REAL ESTATE



HG MANORTM
REAL ESTATE GROUP

RAND SARGENT

rsargent@mwcre.com

direct 801.989.1600

[View Profile](#)

ASHLEY ALLRED

aallred@mwcre.com

direct 801.309.6889

[View Profile](#)

RYAN FLINT, SIOR

ryan@hgmanor.com

direct 801.200.9199

[View Profile](#)

**FULL SERVICE
COMMERCIAL REAL ESTATE**

312 East South Temple

Salt Lake City, UT 84111

Office 801.456.8800

www.mwcre.com



SITE



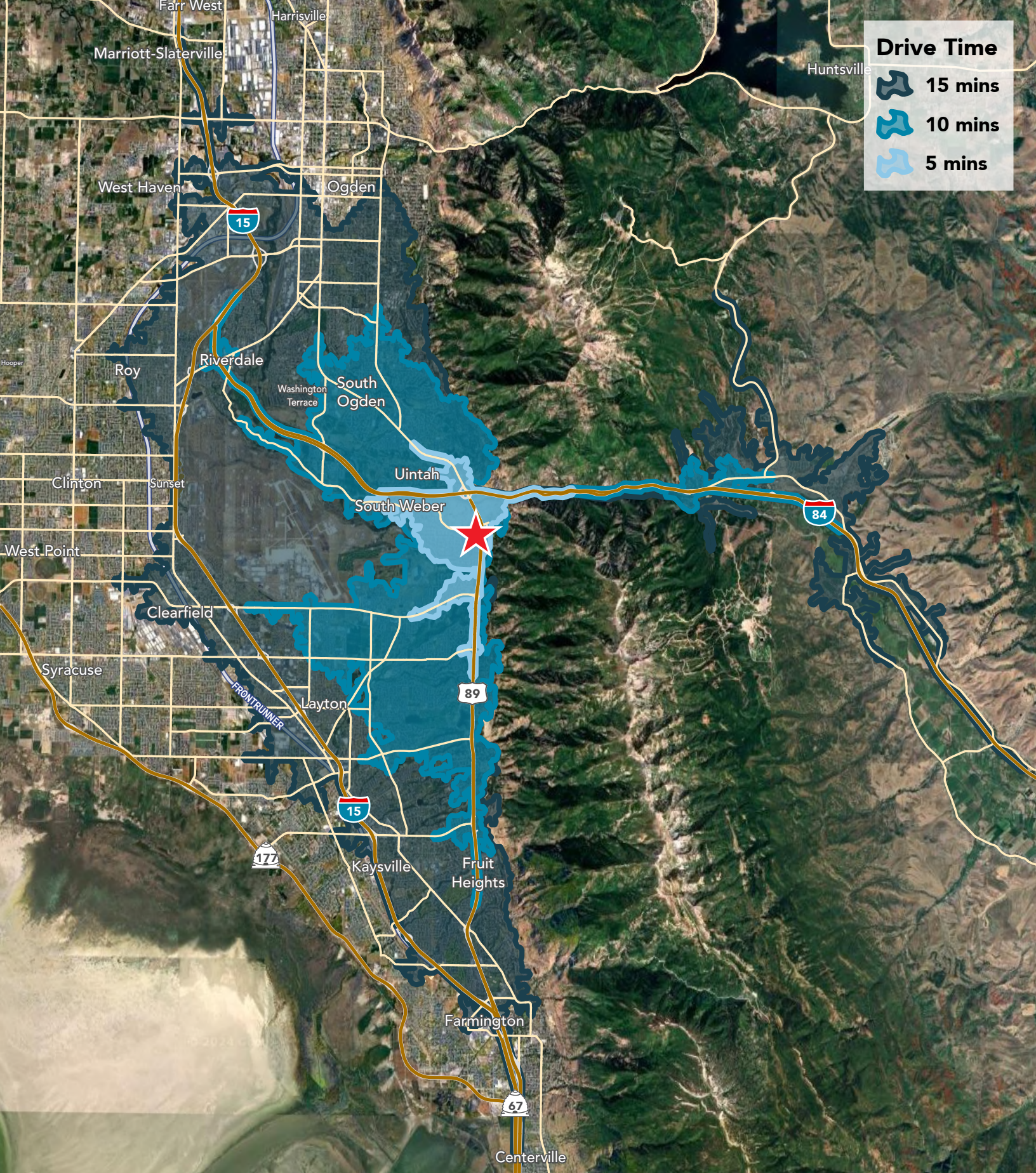
RAND SARGENT
 rsargent@mwcre.com
 direct 801.989.1600
[View Profile](#)

ASHLEY ALLRED
 aallred@mwcre.com
 direct 801.309.6889
[View Profile](#)




RYAN FLINT, SIOR
 ryan@hgmanor.com
 direct 801.200.9199
[View Profile](#)

**FULL SERVICE
 COMMERCIAL REAL ESTATE**
 312 East South Temple
 Salt Lake City, UT 84111
 Office 801.456.8800
www.mwcre.com

This statement with the information it contains is given with the understanding that all negotiations relating to the purchase, renting or leasing of the property described above shall be conducted through this office. The above information while not guaranteed has been secured from sources we believe to be reliable.



Drive Time

-  15 mins
-  10 mins
-  5 mins



MOUNTAIN WEST
COMMERCIAL REAL ESTATE



HG MANOR
REAL ESTATE GROUP

RAND SARGENT

rsargent@mwcre.com
direct 801.989.1600
[View Profile](#)

ASHLEY ALLRED

aallred@mwcre.com
direct 801.309.6889
[View Profile](#)

RYAN FLINT, SIOR

ryan@hgmanor.com
direct 801.200.9199
[View Profile](#)

**FULL SERVICE
COMMERCIAL REAL ESTATE**
312 East South Temple
Salt Lake City, UT 84111
Office 801.456.8800
www.mwcre.com