

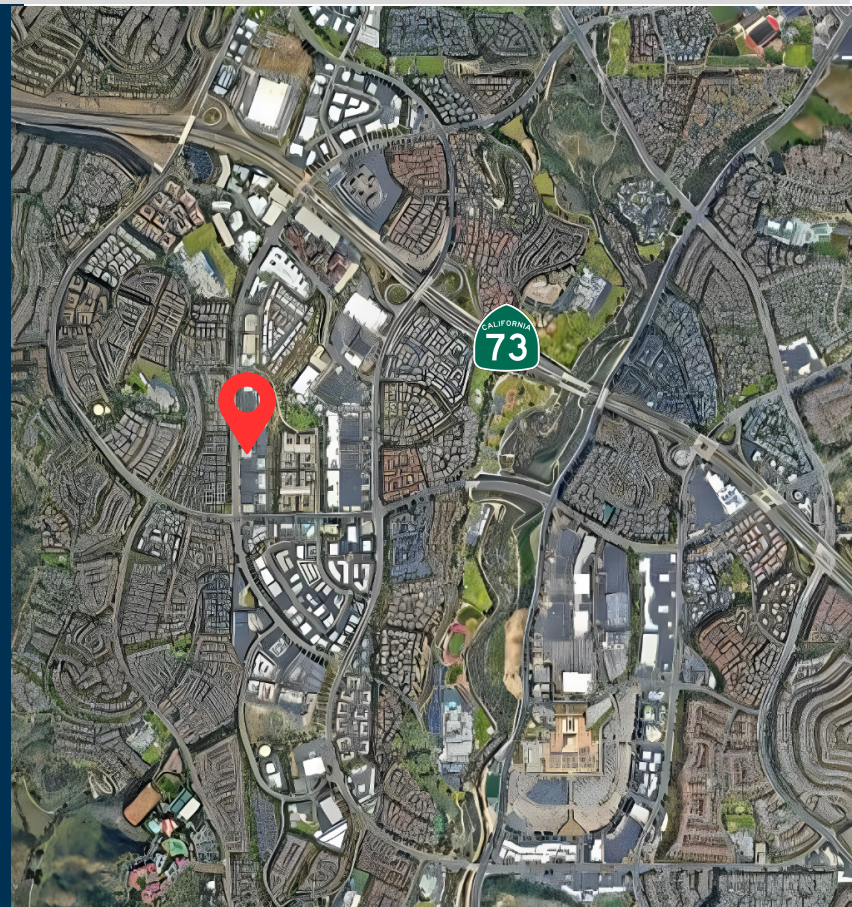
26800 Aliso Viejo Pkwy, CA 92656



PROPERTY FEATURES

- Low-Rise Building
- Ample, Free Parking
- Access to 73 Toll Road
- Located in Central Aliso Viejo
- Proactive and Responsive Landlord
- Available Immediately

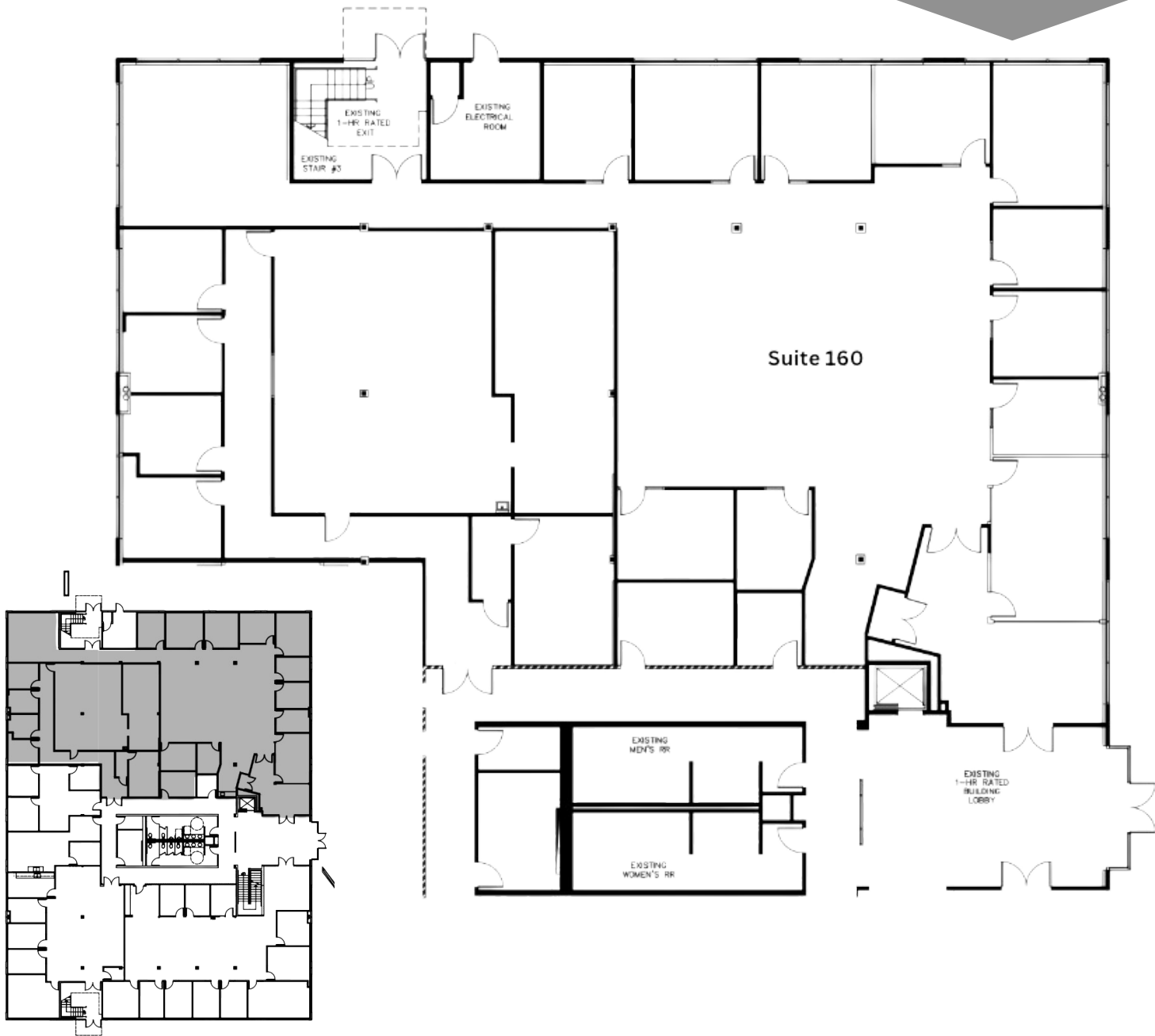
Suite	RSF	LEASE RATE
160	9,761	\$2.25 PSF, NNN
150	4,908	\$2.25 PSF, NNN



Operating expenses are +/- \$0.90 PSF for an FSG equivalent.

26800 Aliso Viejo Pkwy,
CA 92656

9,761 SF
\$2.25 SF/NNN



Exclusively
Listed By:

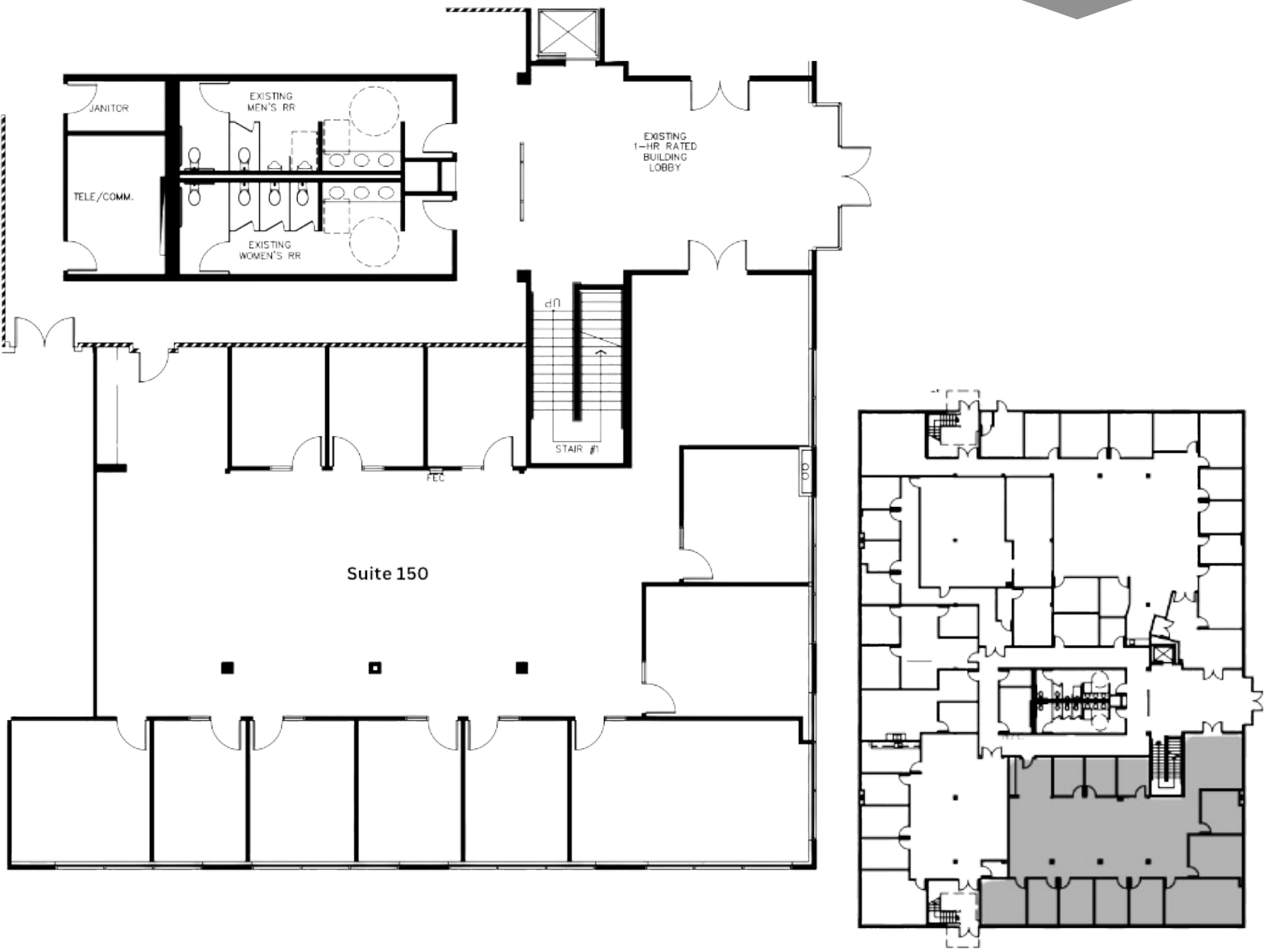
Rob Rader
President
949.500.9391
rob.rader@TopsideRE.com
License # 01373045

Mac Mace
Director
949.922.9889
mac.mace@TopsideRE.com
License # 01956808



26800 Aliso Viejo PKWY, CA 92656

4,908 SF
\$2.25 SF/NNN



Exclusively
Listed By:

Rob Rader
President
949.500.9391
rob.rader@TopsideRE.com
License # 01373045

Mac Mace
Director
949.922.9889
mac.mace@TopsideRE.com
License # 01956808



Topside

REAL ESTATE

2091 San Joaquin Hills, Newport
Beach, CA, 92660
TopsideRE.com
949-500-9391

OUR TEAM



ROB RADER

PRESIDENT
949.500.9391

rob.rader@TopsideRE.com

License # 01373045



MAC MACE

DIRECTOR
949.922.9889

mac.mace@TopsideRE.com

License # 01956808

Disclaimer: While we believe all information to be accurate, tenant is responsible to verify all information and complete their own due diligence.