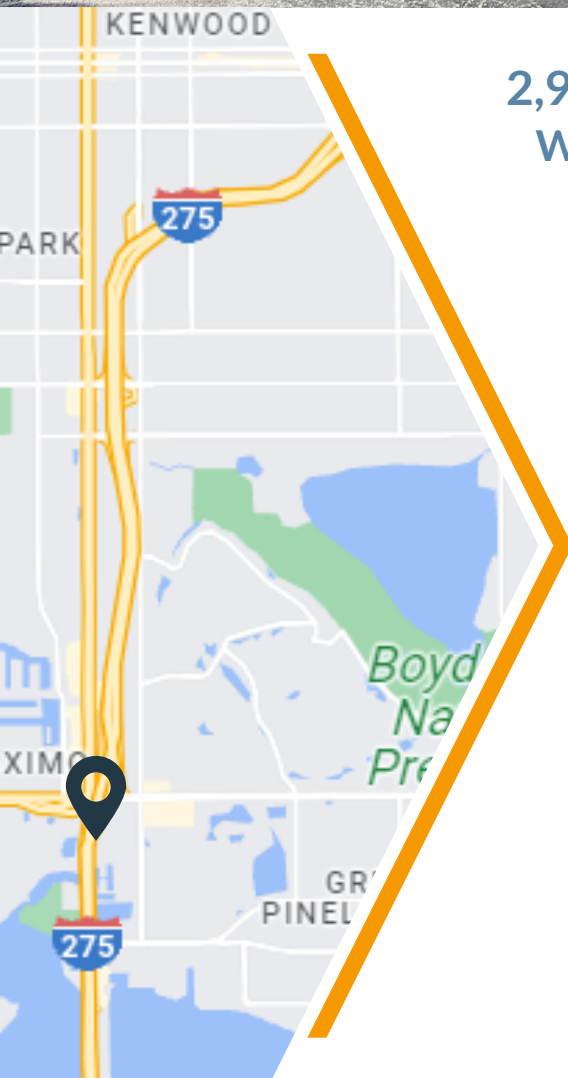


# SKYWAY POINTE

4100 - 4116 34th St. S., St. Petersburg, FL 33711



## 2,984 - 5,151 SF FITNESS SPACE AVAILABLE WITH ENCLOSED, OUTDOOR TRAINING AREA

- » Pylon signage available on 34th Street
- » Located across the street from the brand new luxury apartments: Addison Skyway Marina (with 308 units) & Sur Club (with 296 units)
- » Located in the Skyway Marina district
- » Minutes from the Sunshine Skyway Bridge
- » 2022 34th Street Traffic Counts: 25,500 AADT

Demographics	1-mile	3-mile	5-mile
2023 Population	9,331	87,162	184,597
Daytime Employment	4,245	23,812	94,437
Average HH Income	\$91,762	\$78,307	\$85,283
Median Age	47.4	44	47.2

**Leasing Contact:** Wanda De Boer | Managing Director - Retail Services  
(Cell) 813-690-3020 | (Office) 813-269-0702 | [wdeboer@rpm-realty.com](mailto:wdeboer@rpm-realty.com)





# SKYWAY POINTE

4100 - 4116 34th St. S., St. Petersburg, FL 33711

34TH STREET SOUTH (U.S. HWY 19)



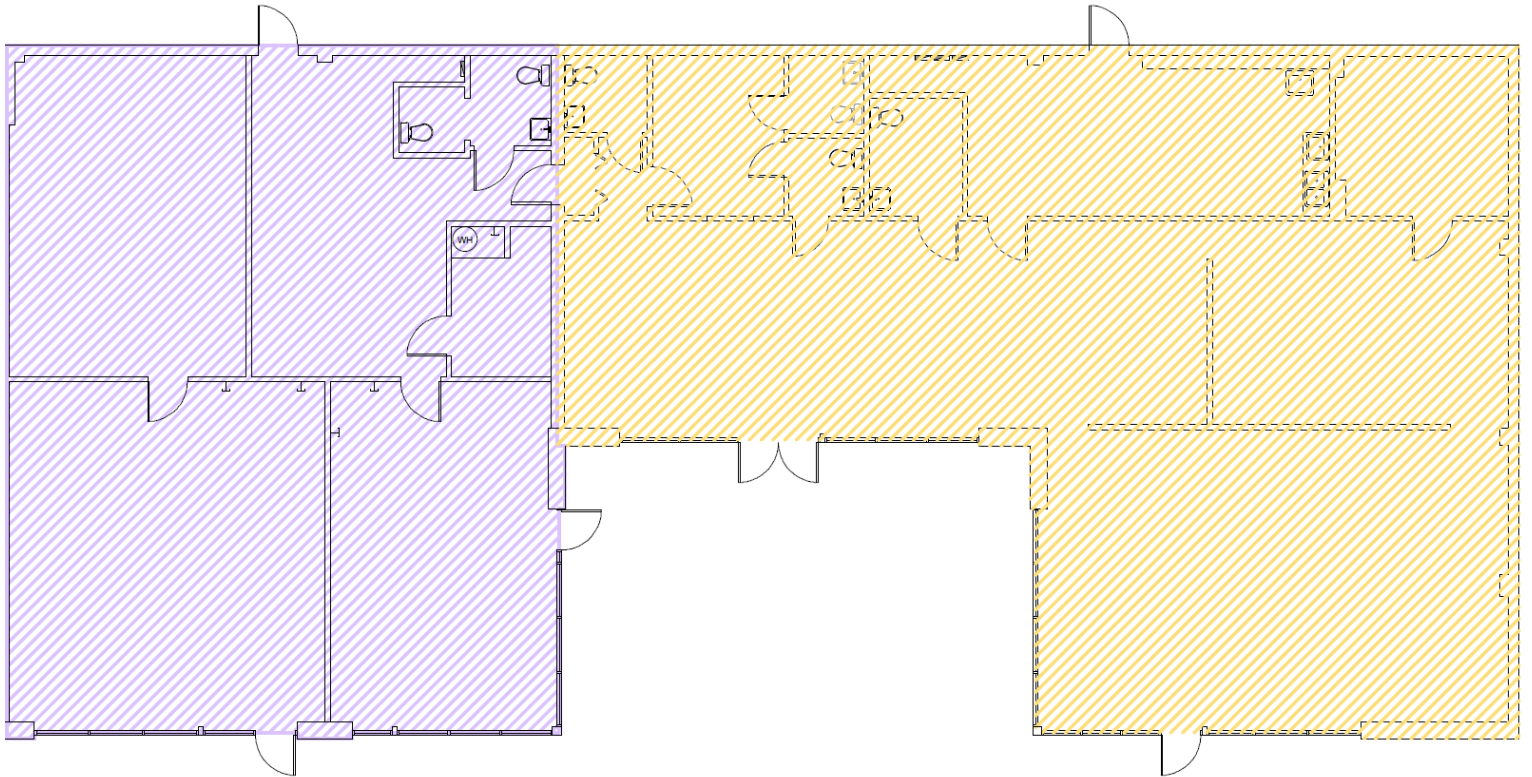
Suite	Tenant	SF
4100	AVAILABLE	1,530
4102	Pinch-A-Penny	3,500
4102A	AVAILABLE	2,167
4110-4116	AVAILABLE	2,984



The information contained herein was obtained from sources believed reliable; however, RPM Realty Management, LLC makes no guarantees, warranties, or representations as to the completeness or accuracy thereof. The presentation of this property is submitted subject to errors, omissions, change of price or conditions prior to sale or lease, or withdrawal without notice.







2,167 SF

2,984 SF

5,151 TOTAL SF

The information contained herein was obtained from sources believed reliable; however, RPM Realty Management, LLC makes no guarantees, warranties, or representations as to the completeness or accuracy thereof. The presentation of this property is submitted subject to errors, omissions, change of price or conditions prior to sale or lease, or withdrawal without notice.

