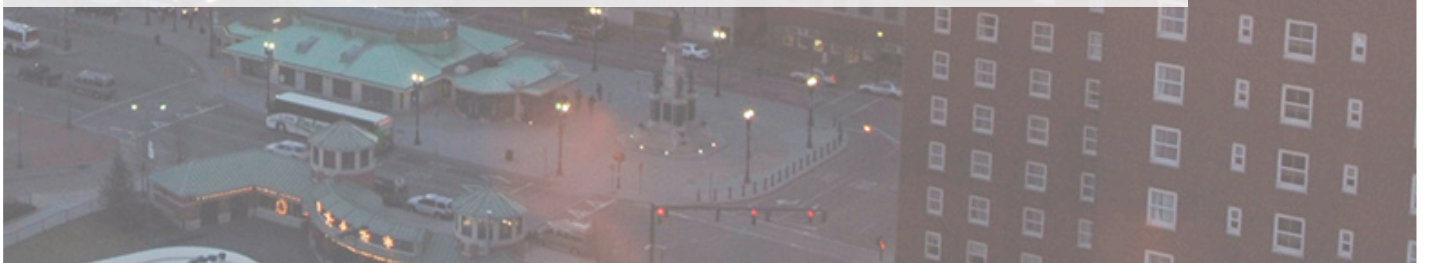


sweeney

REAL ESTATE & APPRAISAL

RETAIL FOR SALE

2570-2576 WARWICK AVENUE WARWICK - RHODE ISLAND



One Turks Head Place, Suite 850 • Providence, Rhode Island 02903
T: 401.331.9300 • F: 401.331.9306 • www.sreari.com



JACKSON CAFFREY | [JCAFFREY@SREARI.COM](mailto:jcaffrey@sreari.com) | 401-331-9300 EXT. 212

2570-2576 WARWICK AVENUE WARWICK - RHODE ISLAND

Asking Price: \$995,000
(Plat 351, Lots 231 & 266)

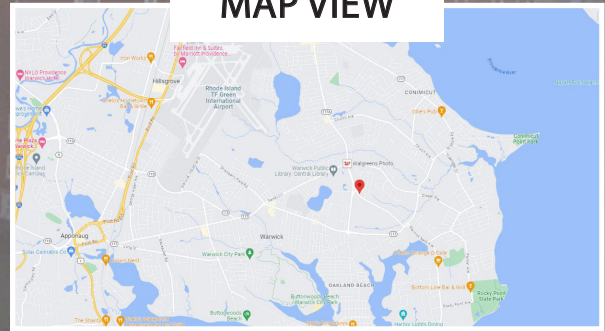
PROPERTY DETAILS

- Auto Repair Retail Site
- 6,036± SF Building
- 0.55± Acres of Land
- 1,480± SF of Office Space
- Six (6) Drive In Doors
- 14 FT Ceilings
- Zoned General Business
- 10 Minutes to I-95 & I-295
- Neighbors Include:
Meadowbrook Lanes,
Bishop Hendricken High
School & Family Dollar

OVERHEAD



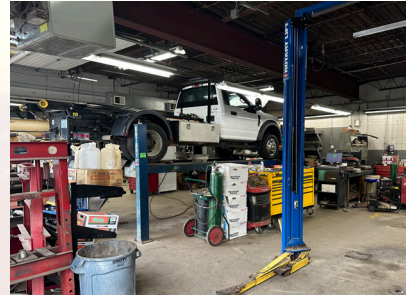
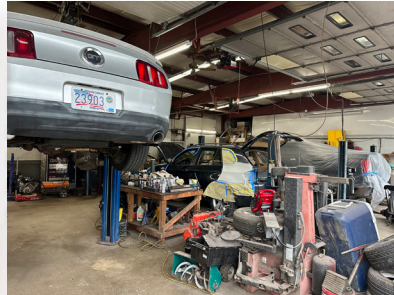
MAP VIEW



JACKSON CAFFREY | JCAFFREY@SREARI.COM | 401-331-9300 EXT. 212

2570-2576 WARWICK AVENUE WARWICK - RHODE ISLAND

ADDITIONAL PHOTOS



All information furnished regarding property for sale, rental or financing is from sources deemed reliable. But no warranty or representation is made as to the accuracy thereof and same is submitted subject to errors, omissions, change or price, rental or other conditions, prior sale lease or financing or withdrawal without notice.



One Turks Head Place, Suite 850 • Providence, Rhode Island 02903
T: 401.331.9300 • F: 401.331.9306 • www.sreari.com

