

2754 LaCienega Blvd., Los Angeles

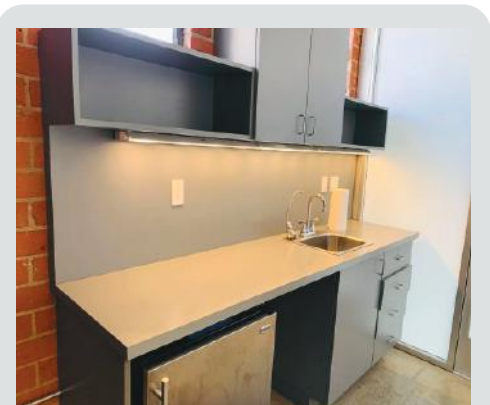
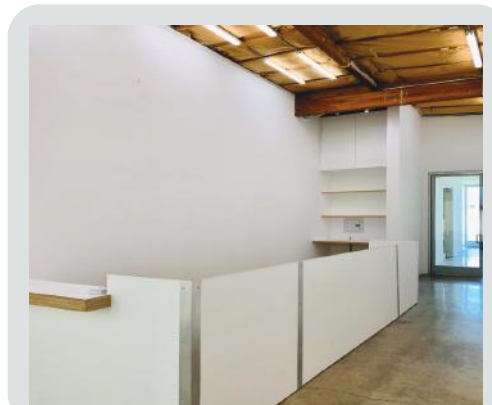
2000-5000 SF Office for Lease



Between Washington & Venice
In the Heart of the Culver City Art District
Used as a fine art gallery for the last ten years
This building offers white walls and polished concrete floors

- * 2000-5000 SF Available
- * \$2.00 PSF Per Month MG
- * Skylights in Main Gallery

- * 10 Car Tandem Parking
- * Excellent for Creative Office
- * Culver City Art District Location



CONTACT: Tom Walsmith
Direct: (310) 204-4040
tomwalsmith@gmail.com

CommercialPropertyGroup
10020 National Blvd., Ste. B
Los Angeles, CA 90034

2754 La Cienega Blvd | Los Angeles, CA 90034

