

PALOMAR BUSINESS CENTER

2380 CAMINO VIDA ROBLE & 6353 EL CAMINO REAL
CARLSBAD, CA 92011



LEE & ASSOCIATES
COMMERCIAL REAL ESTATE SERVICES



INDUSTRIAL/R&D/OFFICE FOR LEASE

BUILDING FEATURES



OFFICE SUITE
630 SF



INDUSTRIAL SUITE
717 - 2,128 SF



CONVENIENT
LOCATION



FRONTAGE ON MAJOR
COMMERCIAL CORRIDOR



NICELY
LANDSCAPED



ON-SITE
DELI



DANIEL KNOKE
(760) 929-7836 | DRE# 01215373
dknoke@lee-associates.com

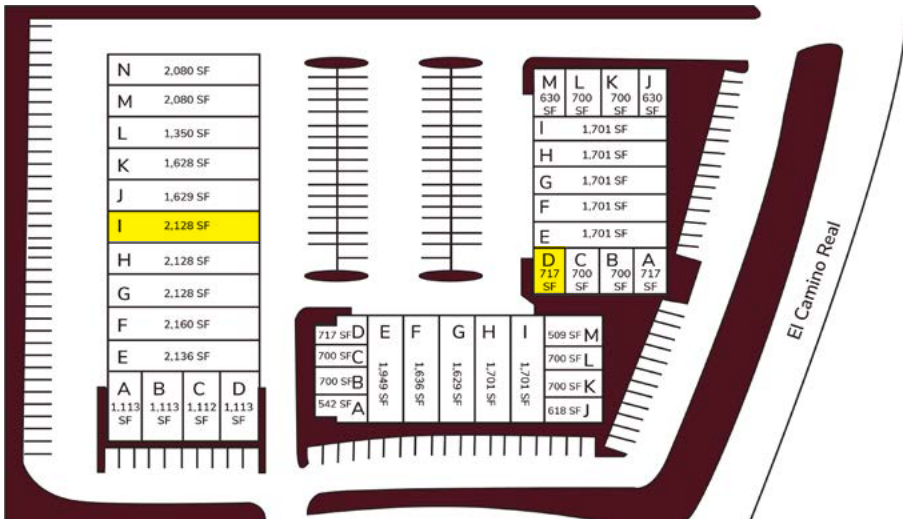
PETER MERZ
(760) 448-1362 | DRE# 01269042
pmerz@lee-associates.com

AVAILABILITY

PALOMAR BUSINESS CENTER					
Suite #	Total SF	Office/Restroom	Rent/SF*	Available	Access
2380 - I	2,128	Reception three private offices and 1 grade level door	\$1.60 MG*	30 Day Notice	Call to Show
6353 - D	717	Reception private office bathroom 1 grade level door	\$1.70 MG*	Dec 1st, 2024	Call to Show

*All units charged a common area maintenance charge (CAM) of approx. \$0.14 per SF

SITE PLAN



DANIEL KNOKE
(760) 929-7836 | DRE# 01215373
dknoke@lee-associates.com

PETER MERZ
(760) 448-1362 | DRE# 01269042
pmerz@lee-associates.com

LEE & ASSOCIATES CRE SERVICES - NSDC, INC.
1902 Wright Place, Suite 180, Carlsbad, CA 92008
www.lee-associates.com



PALOMAR BUSINESS CENTER

2380 CAMINO VIDA ROBLE & 6353 EL CAMINO REAL

2380 CVR

Suite I - 2,128 SF

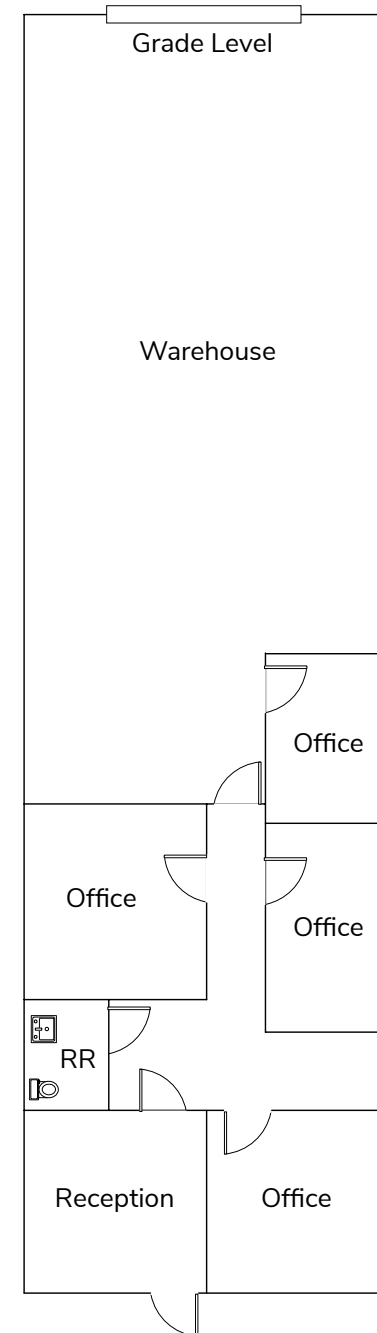
FLOOR PLAN

2380 CAMINO VIDA ROBLE

Suite #:	2380 -I
Total SF:	2,128 SF
Office/Restroom:	Reception three private offices and 1 grade level door
Rent/SF*:	\$1.60 MG*
Available:	30 Day Notice
Access:	Call to Show

*All units charged a common area maintenance charge (CAM) of approx. \$0.14 per SF

All information furnished regarding property for sale, rental or financing is from sources deemed reliable, but no warranty or representation is made to the accuracy thereof and same is submitted to errors, omissions, change of price, rental or other conditions prior to sale, lease or financing or withdrawal without notice. No liability of any kind is to be imposed on the broker herein.



DANIEL KNOKE
(760) 929-7836 | DRE# 01215373
dknoke@lee-associates.com

PETER MERZ
(760) 448-1362 | DRE# 01269042
pmerz@lee-associates.com

LEE & ASSOCIATES CRE SERVICES - NSDC, INC.
1902 Wright Place, Suite 180, Carlsbad, CA 92008
www.lee-associates.com

LEE & ASSOCIATES
COMMERCIAL REAL ESTATE SERVICES

6353 CVR

Suite D - 717 SF

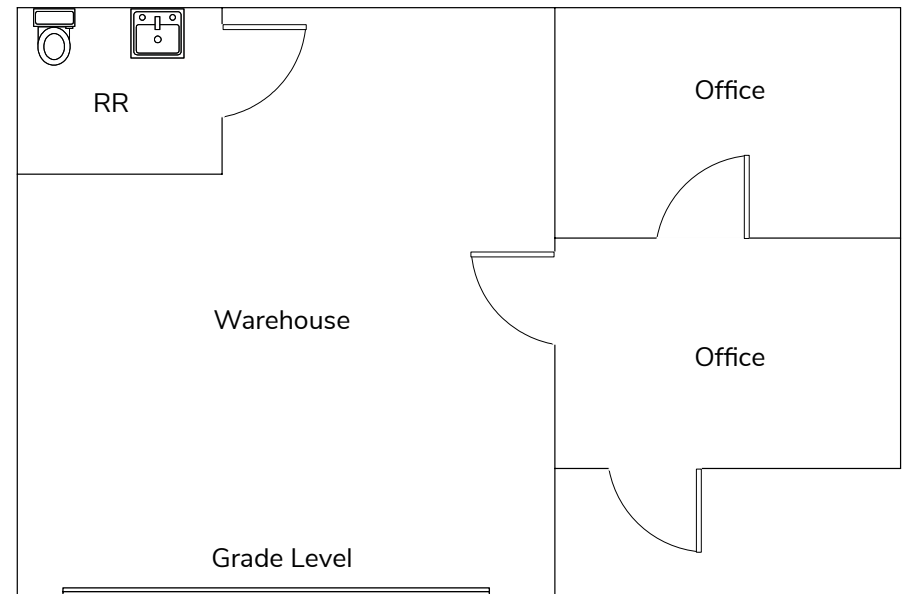
FLOOR PLAN

6353 CAMINO VIDA ROBLE

Suite #:	6353 -D
Total SF:	717 SF
Office/Restroom:	Reception private office bathroom 1 grade level door
Rent/SF*:	\$1.70 MG*
Available:	Dec 1st, 2024
Access:	Call to Show

*All units charged a common area maintenance charge (CAM) of approx. \$0.14 per SF

All information furnished regarding property for sale, rental or financing is from sources deemed reliable, but no warranty or representation is made to the accuracy thereof and same is submitted to errors, omissions, change of price, rental or other conditions prior to sale, lease or financing or withdrawal without notice. No liability of any kind is to be imposed on the broker herein.



DANIEL KNOKE
(760) 929-7836 | DRE# 01215373
dknoke@lee-associates.com

PETER MERZ
(760) 448-1362 | DRE# 01269042
pmerz@lee-associates.com

LEE & ASSOCIATES CRE SERVICES - NSDC, INC.
1902 Wright Place, Suite 180, Carlsbad, CA 92008
www.lee-associates.com

 LEE &
ASSOCIATES
COMMERCIAL REAL ESTATE SERVICES

PALOMAR BUSINESS CENTER

2380 CAMINO VIDA ROBLE & 6353 EL CAMINO REAL

CARLSBAD, CA 92011

DANIEL KNOKE
(760) 929-7836
dknoke@lee-associates.com
DRE Lic#01215373

PETER MERZ
(760) 448-1362
pmerz@lee-associates.com
DRE Lic#01269042



Lee & Associates Commercial Real Estate Services, Inc. - NSDC | 1902 Wright Place, Suite 180, Carlsbad, CA 92008 | P: (760) 929-9700 | F: (760) 929-9977

No warranty or representation is made to the accuracy of the foregoing information. Terms of sale or lease and availability are subject to change or withdrawal without notice.
Any of the foregoing information will need to be separately verified by Buyer.