



GROUND MATRIX



FOR LEASE

MEDICAL OFFICE

at

1001

SNEATH LANE

San Bruno, CA 94066



Presented By:

Jerry Adamson

707.570.7802

jerry@groundmatrix.com

CalDRE #01935945

1001

SAN BRUNO MEDICAL OFFICE BUILDING

SNEATH LANE

San Bruno, CA 94066



GROUND MATRIX

FOR LEASE | MEDICAL OFFICE BUILDING

Executive Summary



OFFERING SUMMARY

Suite 100:	+/- 5,414 RSF
Lease Rate:	Please Inquire
Lease Terms:	5-10 Years
Lease Type:	Full Service Gross
Use:	Medical Office Use

LOCATION OVERVIEW

Welcome to 1001 Sneath Lane in San Bruno, where healthcare meets convenience in a prime location. Nestled in the heart of San Mateo County, this professional medical building offers a range of specialized healthcare services in a setting designed for both patient comfort and accessibility.

Strategically situated near major highways, including HWY 101, 280, and 380, reaching the medical facility is a breeze. This excellent connectivity makes the location easily accessible from various parts of San Mateo County, San Francisco and beyond, minimizing travel time for patients and medical professionals alike.

Jerry Adamson

707.570.7802
jerry@groundmatrix.com
CalDRE #01935945

1001

SAN BRUNO MEDICAL OFFICE BUILDING

SNEATH LANE

San Bruno, CA 94066



GROUND MATRIX

FOR LEASE | MEDICAL OFFICE BUILDING

Suite 100

SUITE 100 HIGHLIGHTS

- Previously Occupied by Veteran Affairs - Teleradiology Department
- Ground floor access to Suite
- High-end medical buildout
- Reception and waiting area
- 23 Private offices
- 2 Large conference rooms
- 2 Interior restrooms
- Storage and IT Closet
- Staff break room



Jerry Adamson

707.570.7802

jerry@groundmatrix.com

CalDRE #01935945

1001

SAN BRUNO MEDICAL OFFICE BUILDING

SNEATH LANE

San Bruno, CA 94066



GROUND MATRIX

FOR LEASE | MEDICAL OFFICE BUILDING

Suite 100 Photos



Jerry Adamson

707.570.7802

jerry@groundmatrix.com

CalDRE #01935945

1001

SAN BRUNO MEDICAL OFFICE BUILDING

SNEATH LANE

San Bruno, CA 94066



GROUND MATRIX

FOR LEASE | MEDICAL OFFICE BUILDING

Suite 100 Photos



Jerry Adamson

707.570.7802

jerry@groundmatrix.com

CalDRE #01935945

1001

SAN BRUNO MEDICAL OFFICE BUILDING

SNEATH LANE

San Bruno, CA 94066



GROUND MATRIX

FOR LEASE | OFFICE BUILDING

Property Photos



Jerry Adamson

707.570.7802

jerry@groundmatrix.com

CalDRE #01935945

1001

SAN BRUNO MEDICAL OFFICE BUILDING

SNEATH LANE

San Bruno, CA 94066

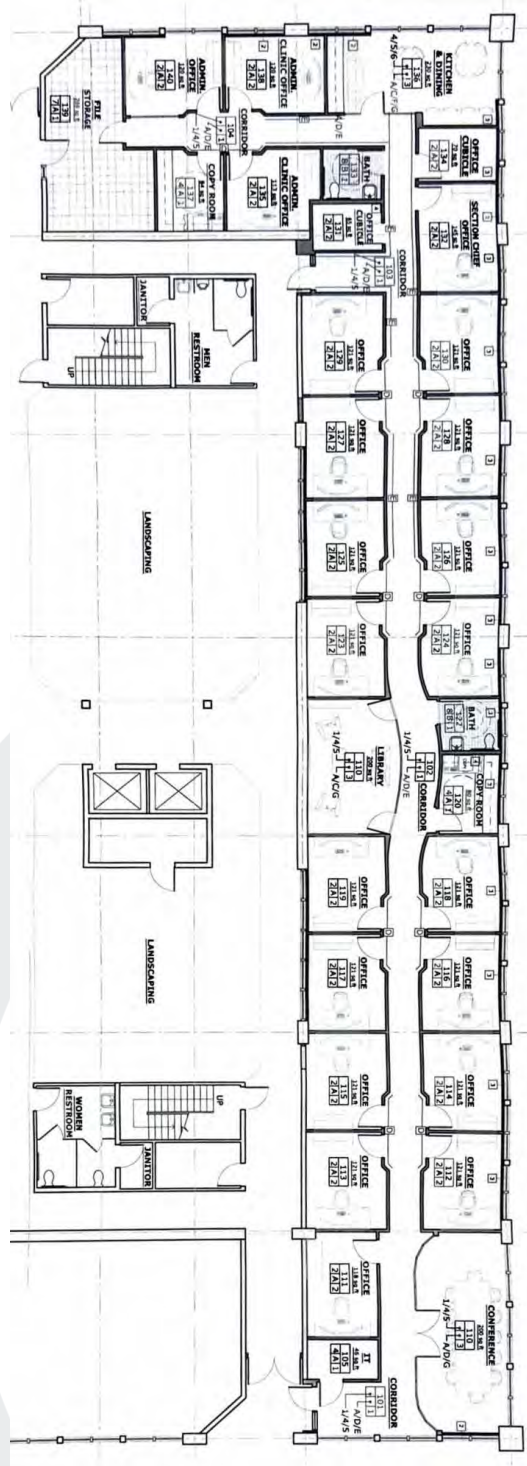


GROUND MATRIX

FOR LEASE | MEDICAL OFFICE BUILDING

Floor Plans

NOT TO SCALE



Jerry Adamson

707.570.7802

jerry@groundmatrix.com

CalDRE #01935945

1001

SAN BRUNO MEDICAL OFFICE BUILDING

SNEATH LANE

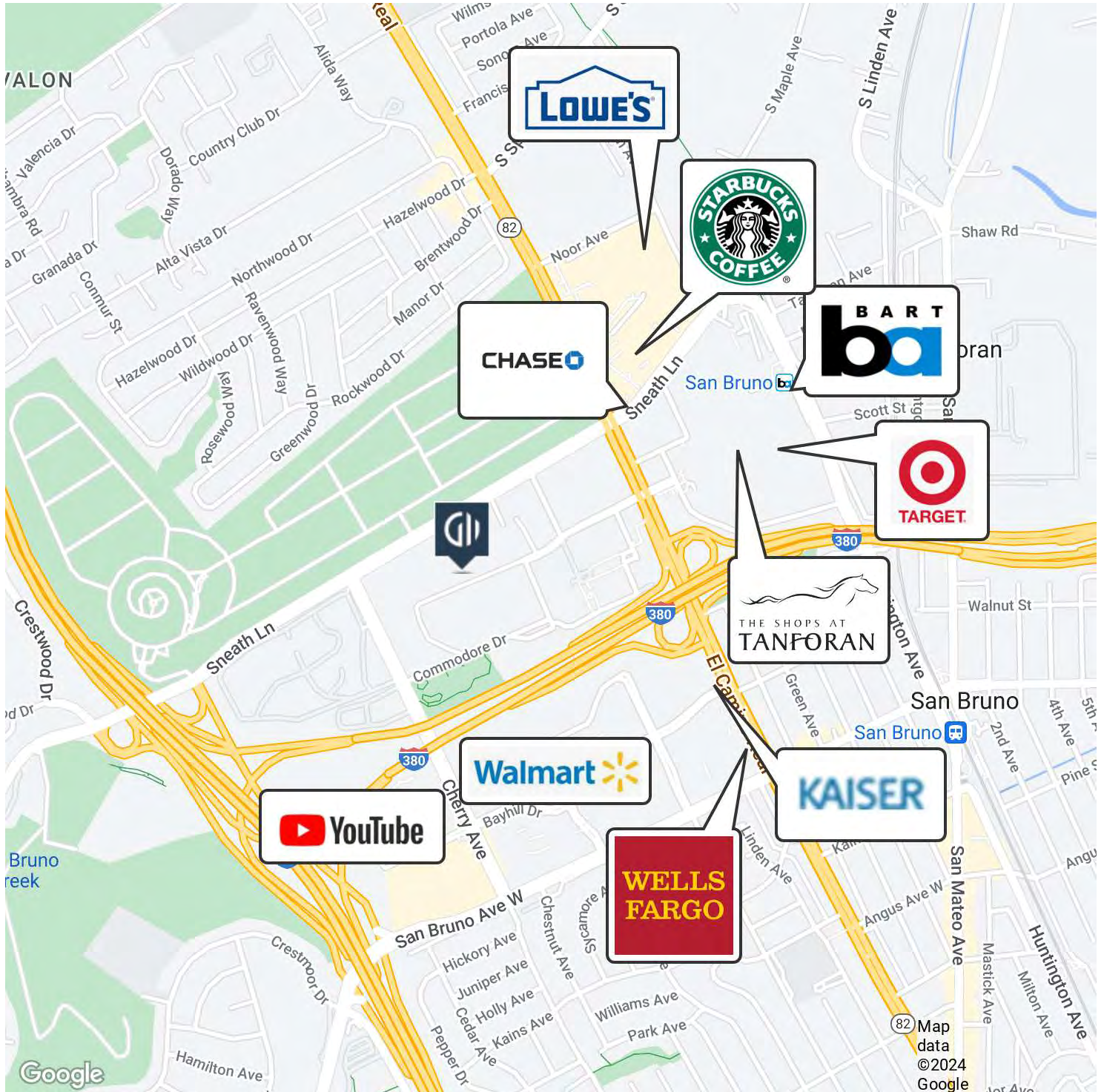
San Bruno, CA 94066



GROUND MATRIX

FOR LEASE | MEDICAL OFFICE BUILDING

Location Map



Jerry Adamson

707.570.7802

jerry@groundmatrix.com

CalDRE #01935945