

STELLAR BUILDING

29,298 SF Available

2201 Pacific Avenue, Everett, WA 98201



NEWMARK

BRENDAN SOELLING

Associate Director

425-362-1389

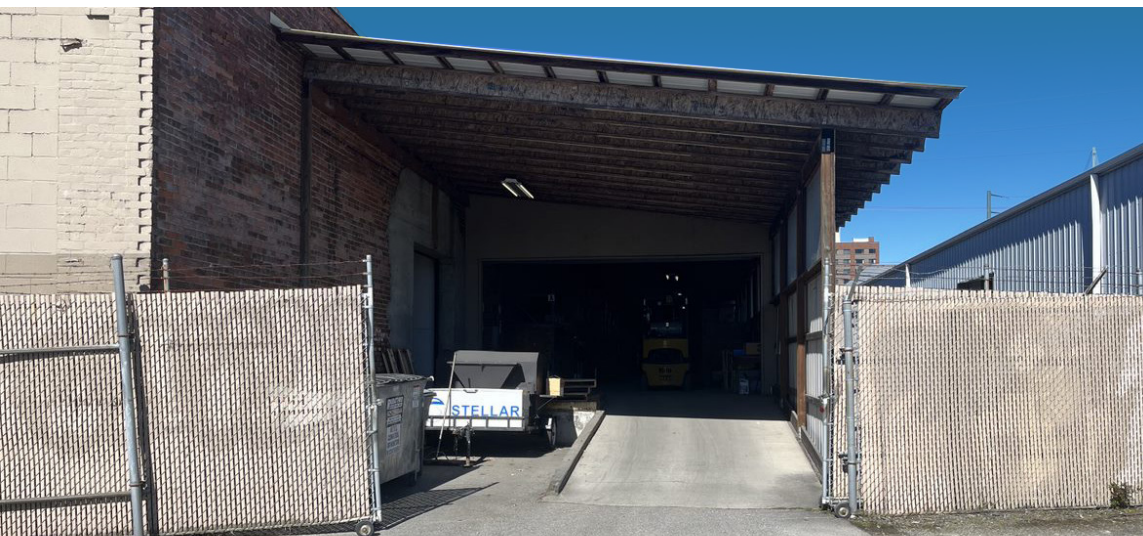
brendan.soelling@nmrk.com

MORGAN RICHEY

Associate Director

425-362-1409

morgan.richey@nmrk.com



PROPERTY HIGHLIGHTS

- Ideal Retail/Distribution
- High visibility signage off of Pacific Ave.
- Loading: 1 dock high, 1 pony, 2 grade
- Showroom, will call and distribution
- Available Now
- Call brokers for rates
- Zoned MU

 [View Zoning Code](#)

BUILDING SF BREAKDOWN

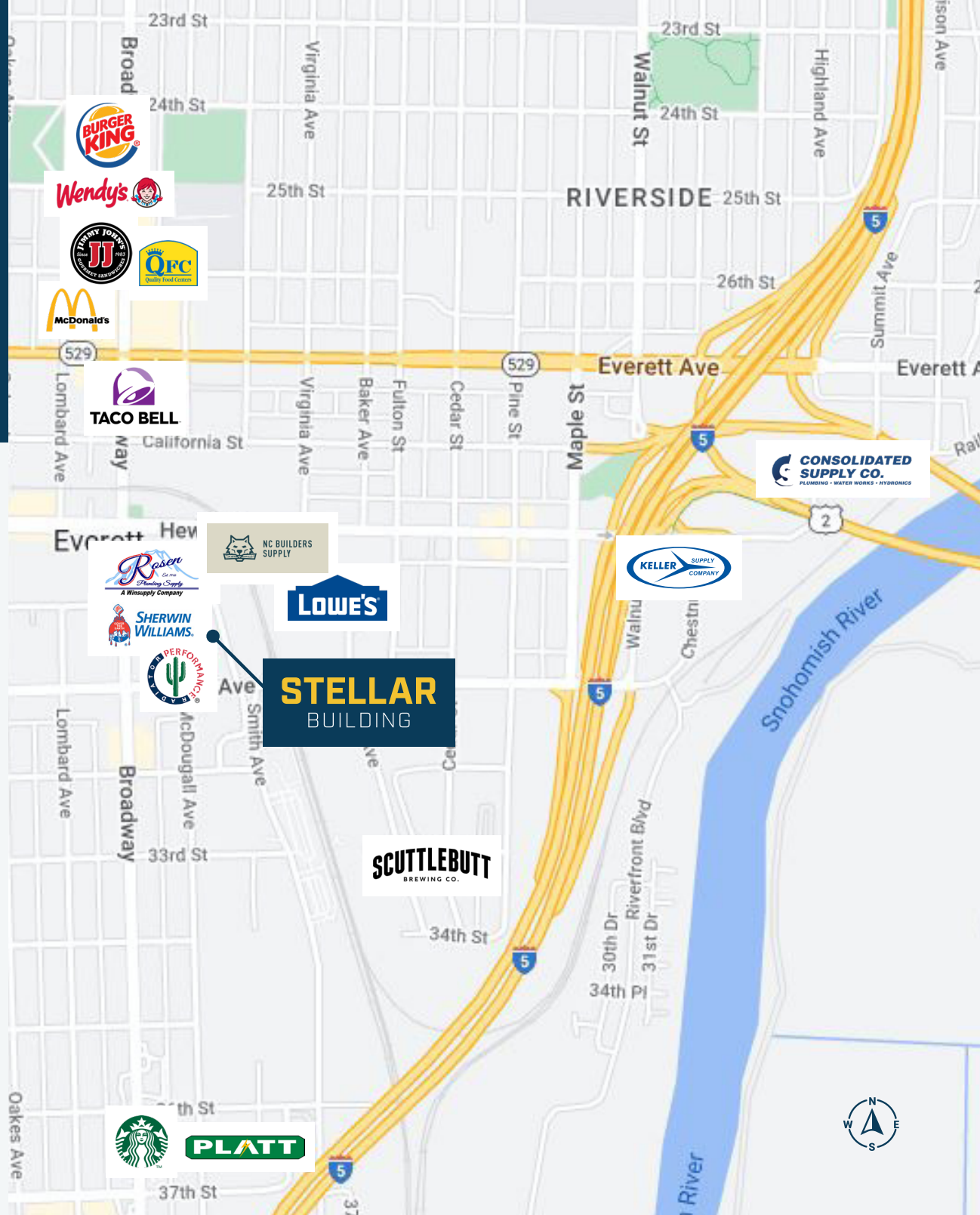
Warehouse/showroom	21,783 SF
Stand Alone Metal Warehouse	3,640 SF
Covered & Secured Storage	3,875 SF
Total	29,298 SF

DRIVING TIMES

Downtown Bellevue 30 minutes

Downtown Seattle 35 minutes

TENANTS IN THE AREA



FLOOR PLAN

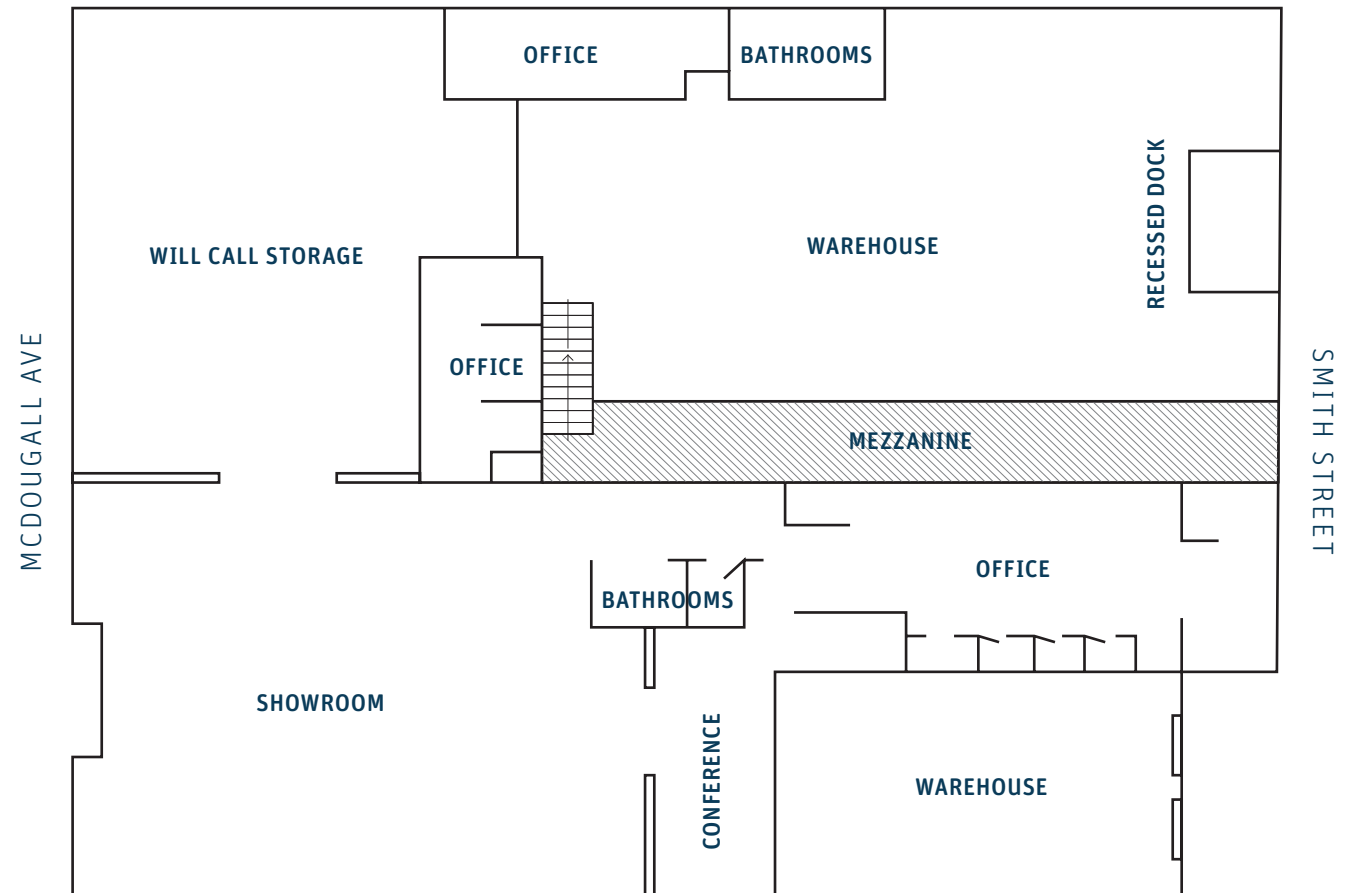
Warehouse/showroom
21,783 SF

Stand Alone Metal Warehouse
3,640 SF

Covered & Secured Storage
3,875 SF

Total: 29,298 SF

WAREHOUSE STAGING AREA



STELLAR

BUILDING

BRENDAN SOELLING

Associate Director

425-362-1389

brendan.soelling@nmrk.com

MORGAN RICHEY

Associate Director

425-362-1409

morgan.richey@nmrk.com

NEWMARK

The information contained herein has been obtained from sources deemed reliable but has not been verified and no guarantee, warranty or representation, either express or implied, is made with respect to such information. Terms of sale or lease and availability are subject to change or withdrawal without notice.