



216 FIRST AVENUE SOUTH
SEATTLE, WASHINGTON

FOR LEASE

HISTORIC PIONEER SQUARE OFFICE

Grand Central Building is located in the heart of Pioneer Square, adjacent to Occidental Park. The historic building features exposed brick, operable windows, high ceilings, and an internal courtyard with restaurants and retail shops.

HIGHLIGHTS

- :: Creative, brick and beam feel
- :: Building conference room and kitchen
- :: Grand Central Bakery, Gaba Sushi, and E. Smith Mercantile located in the building
- :: Retail amenities include book stores, yoga studio and art galleries
- :: Excellent transit access
- :: Secure bike storage and showers

CURRENT AVAILABILITY

Suite	Size	Available
Suite 205	384 SF	Now
Suite 250	393 SF	Now
Suite 316	456 SF	Now
Suites 480	638 SF	Now

FOR MORE INFORMATION CONTACT:

Nick Carkonen

Vice President

+1 206 292 6039

nick.carkonen@cbre.com

Nate Fliflet

Senior Associate

+1 206 292 6119

nate.fliflet@cbre.com



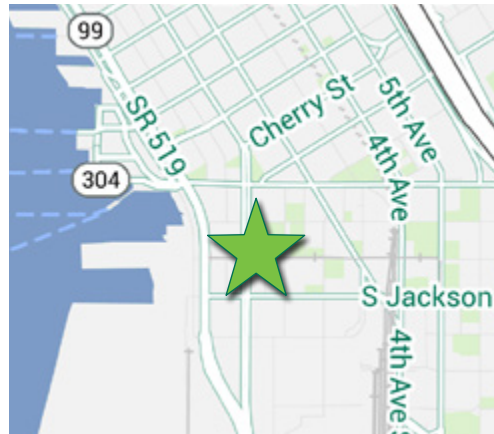


Retail Lobby



GRAND CENTRAL BUILDING

216 FIRST AVENUE SOUTH
SEATTLE, WASHINGTON



FOR MORE INFORMATION CONTACT:

Nick Carkonen

Vice President

+1 206 292 6039

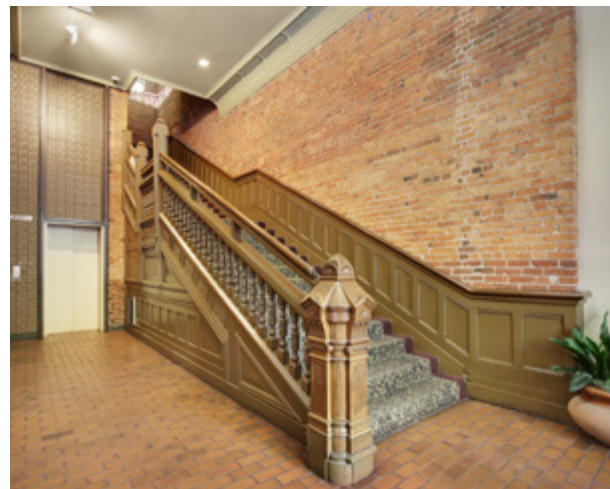
nick.carkonen@cbre.com

Nate Fliflet

Senior Associate

+1 206 292 6119

nate.fliflet@cbre.com



CBRE, Inc.

1420 Fifth Avenue

Suite 1700

Seattle, WA 98101

T +1 206 292 1600

F +1 206 292 6033

© 2014 CBRE, Inc. This information has been obtained from sources believed reliable. We have not verified it and make no guarantee, warranty or representation about it. Any projections, opinions, assumptions or estimates used are for example only and do not represent the current or future performance of the property. You and your advisors should conduct a careful, independent investigation of the property to determine to your satisfaction the suitability of the property for your needs. Photos herein are the property of their respective owners and use of these images without the express written content of the owner is prohibited. mh 04-09-15



Occidental Park

